



@thejobguide88

@thejobguide88

/company/the-job-guide



**WE'RE
HIRING**
JOIN OUR TEAM

Locally Made | Sustainable | Committed to quality

Started in 1953, Royal Oak is the nation's largest producer of lump charcoal. Our American-made, 100% natural lump charcoal is manufactured from renewable sources right here in Arkansas. We are a family-owned business committed to providing the highest-quality products to our customers. We are a growing company that currently employs over 1,000 team members across our U.S. locations.

We currently have opportunities in our production areas on our Huntsville, AR team for:

- **Utility Operators**
- **Manufacturing Operators**
- **Maintenance Operators**

We provide a full benefit package to include medical, dental, vision, HSA, life insurance, 401(k) with match potential, and paid time off. We have competitive starting rates and promotional opportunities within each job category.

Apply today to become part of a dynamic team.

In person at: 20174 HWY 74

Huntsville, AR 72740

Email resume: Kvillines@royaloak.com



Issue 02

JOBS

Jan. 20 - Feb. 02, 2023

Northwest Arkansas
SW Missouri • Tulsa OK

Free

Say you saw it in the Job Guide



PRINT

Distributed in NW Arkansas, SW Missouri and Tulsa Metro area.



DIGITAL

Find us at: thejobguide.com



[f @thejobguide](https://www.facebook.com/thejobguide) [in /company/the-job-guide](https://www.linkedin.com/company/the-job-guide)

Contact:

PO Box 813
Rogers, AR. 72757
800-654-9776

Sales/Questions:

sunny@thejobguide.com



thejobguide.com

Sunny Martinez
CEO
Job Guide, LLC



Job Guide, LLC is not responsible for ad contents, products or services offered. Job Guide, LLC reserves the right to reject advertising it deems unsuitable and liability does not exceed the cost of the advertisement placed. Any reproductions of the contents of this publication without the written consent of Job Guide, LLC is strictly prohibited.



[f @thejobguide](https://www.facebook.com/thejobguide) [in /company/the-job-guide](https://www.linkedin.com/company/the-job-guide)

EARN YOUR GED®

Take GED® prep classes at any time and finish when you are ready!



- ▶ **FREE Classes**
- ▶ **Flexible Schedule**

ENROLL TODAY:

- ▶ Call 479-986-6911
- ▶ Visit Shewmaker Center for Workforce Technologies
1000 S.E. Eagle Way, Bentonville, AR



NWACC Adult Education provides equal access to all programs and activities. You must be 18 years or older to participate. Classes paid for with funds from the Department of Career Education, Adult Education Division.

Scan the QR code to learn more



New Year! New Rates!



Day & Night Shift Production Positions

NEW Pay Rates starting at: \$16.50 to \$17.00
\$1.50 Pay Increase after 90 days!
\$1.00 Shift Premium!

\$\$ BONUS PROGRAMS \$\$

RETENTION BONUS EARNING POTENTIAL: UP TO \$2000
INSURANCE BENEFITS EFFECTIVE FIRST OF THE MONTH FOLLOWING 30 DAYS OF EMPLOYMENT!

Apply online TODAY at:
careers.butterball.com

Don't have a computer at home? Apply onsite using our computers
Mon.- Fri., 9 a.m.- 4 p.m.

Butterball, LLC | 1294 N. College Street, Huntsville, AR | 479-738-2151
This position is deemed Safety Sensitive for purposes of Butterball's Drug/Alcohol Screening & Testing Policy. Details will be provided to individuals who receive a conditional job offer, or upon request. EOE including Disability/Vets.

**NOW
HIRING**

POLICE RECORDS

Part-time Custodian

for the new Bella Vista Public Safety Facility

- \$17/hr
- 24-28 hrs/weekly
- Flexible hours
based on city's needs
and applicant's availability



Apply online at:
bellavistaar.gov/employment

*Extensive background check will be conducted.



Rogers, AR

WestRock is a leading global packaging company and provider of paper and packaging solutions in global consumer and corrugated markets.

On-Site Hiring Event!

Tues., Jan. 24, 2023

- 3 pm
- 4:30 pm
- 6 pm



Wed., Jan. 25, 2023

- 9 am
- 10:30 am
- 12 pm

*Need to be able to be at the hiring event
for up to 2 hours.*

**Join Us at:
2021 S. 5th St.
Rogers, AR 72758**

- Starting pay \$17.54 per hour
- Rate increase to \$18.37 and up after probational period
- 2nd and 3rd shift differential of 36 cents
- **Comprehensive Benefits** - including but not limited to medical, dental, vision and 401k
- **NO MANDATORY WEEKEND OVERTIME**
- Comprehensive training with numerous learning and development opportunities
- A career with a global packaging company where safety, sustainability, and inclusion are business drivers and foundational elements of the daily work



Can't make it in person? Apply online:

westrock.com/careers

WestRock Company is an Equal Opportunity Employer committed to creating and maintaining a diverse workforce: Minorities/Females/Disabled/Veterans

SPRINGDALE, AR SCHOOL DISTRICT

**NOW HIRING
BUS DRIVERS**



\$19.46 - \$27.25 Per Hour PLUS
\$3900 - \$4800 Incentive Pay
5 hours Each Day & 180 Work Days
Arkansas Teacher Retirement

Health Insurance
Paid CDL Training
Flexible Schedules
No Experience Required

**CALL US TODAY!
479-750-8830**



OZARK REGIONAL TRANSIT AUTHORITY

We're Hiring Full & Part Time Driver Positions for our GROWING Routes!



**Routes available
throughout NWA!**

Excellent Benefits:
Health, Vision, Dental,
Paid Holidays, Paid
Vacations, Retirement
with employer match



Women & Minorities are encouraged to apply

**In Person at ORTA Corporate Office:
2423 E Robinson | Springdale, AR 72764
For more information call: 479-361-8741 or
479-361-8752 by email: tbatres@ozark.org**

Apply today: ozark.org

Pre-employment physical, drug test and background check. | An Equal Employment Opportunity Employer

NOW HIRING IN BENTONVILLE, AR

MANUFACTURING TECHNICIAN

Apply at or Call: 479-715-4342
gamecomposites.com



Caregivers Needed

- Flexible Schedules & Locations
 - Incentive time off
 - Competitive wages
 - Caregiver referral bonuses
 - 401k/Health/Dental/Vision Insurance
 - Unique Assignments
 - Specialized training
 - Direct Deposit
 - Assignments cover all of NW AR
- \$11 - \$15/hr
Depending on assignment
 - No Experience Required
 - Paid Training Provided!!



Apply in person :
3190 Bella Vista Way
Bella Vista, AR 72714

Contact US @ 479-855-6000

rah-ar.com



Let Us Help You Build Your Brand

Digital

Web Design / Development
E-Commerce Development
Social Media Marketing
SEO

Creative

Creative / Collateral
Package Design
Social Content
Photography

Branding

Strategy Development
Logo Design / Identity
Brand Architecture
Naming & Taglines

866-641-7692

martinez-agency.com

@martinezagency

WE ARE HIRING

Join our team in Bentonville, AR!

Operations and Warehouse Positions Available

Embroidery & Patch Machine Operators starting at **\$15** per hr plus differential pay depending on the shift.

Excellent benefits after 60 days of employment. Medical, Dental, Vision, 401K etc., and 4 day work week in Production.

For full job descriptions and to apply, please visit: www.outdoorcap.com/careers or scan QR code.

Outdoor Cap is an equal opportunity employer.



The University of Arkansas, Fayetteville offers employment opportunities in the fields of:
Maintenance ■ Custodial
■ Computer Technical ■ Clerical

Current Opportunities Include:

- **Administrative Specialist III (Two Open Positions)**
- **Building Services Supervisor**
- **Communications Manager, Administrative Services**
- **Custodial Crew Supervisor**
- **HEI Program Coordinator**
- **ISA-Sports Turf Operations Crew**
- **Service Assistant (Current and Anticipated Future Openings)**

The University of Arkansas provides one of the most comprehensive and competitive benefit packages in the region.

- Health Coverage
- Dental Coverage
- Prescription Drug
- Retirement
- Basic Life
- Optional Life
- Tuition Reduction
- Paid Holidays
- Sick Leave
- Vacation Leave
- Catastrophic Leave
- Family & Medical Leave
- Vision
- Short & Long Term Disability
- Employee Assistance Program and More!



UNIVERSITY OF ARKANSAS

The University of Arkansas has an in-house temporary employment staffing service called RazorTemps. Apply to this posting if you are interested in being considered for temporary employment opportunities. These positions vary in length and often provide a 'foot in the door' to permanent employment at the University.

The University of Arkansas recognized the challenge of balancing work with personal life, and we pro actively look for ways to help our employees do well at both aspects of their lives. This includes creating health insurance and retirement plans that work well; offering work-time options where possible; promoting career and personal development; and giving paid leave for holidays, illness, vacations, children's educational activities and military duty, among others.

As we strive to represent the best of public higher education, advance Arkansas and build a better world by providing transformational opportunities and skills, promoting an inclusive and diverse culture, nurturing creativity, and solving problems through research and discovery, the University of Arkansas provides excellent opportunities for professional service and that you can be a part of the worthwhile advancement of the University. We believe in fostering a collaborative and innovative culture among our diverse faculty staff and students that promotes a healthy balance.

To apply for above positions, please visit our website at:
<https://uasys.wd5.myworkdayjobs.com/UASYS>

For more information, please contact us at **479.575.5351**.

The University of Arkansas is an Equal Opportunity-Affirmative Action Institution.



MARTINEZ
SPORTS CARDS



BASKETBALL CARDS
BASEBALL CARDS
FOOTBALL CARDS

www.martinezsportscards.com



JOIN OUR TEAM

Now Hiring! Estamos contratando!

- Maintenance Techs/Tecnico de Mantenimiento
- Electrician/Electricista
- CDL Driver/Conductor CDL
- Sr. Operator in Lowell, AR Plant (Lead)/ Operador Sr. en Lowell (líder)

We Offer/Ofrecemos:

- 3 1/2 Day Work Week/Semana de 3 dias y medio
- Competitive Wages & Benefits/Pago y Beneficios Competitivos
- Bonus Earning Potential/Potencial de Bonos
- Day and Night Openings/Posiciones de Dia y Noche
- Advancement Opportunities/Oportunidades de Crecimiento



Apply online/Aplique en línea en:

<https://jobs.crh.com>

Search/ Busque: "MoistureShield"

Apply onsite/Aplique en Persona:

Mon/Lunes – Fri/Viernes: 9 am – 4 pm

801 N. Jefferson St.

Springdale, AR 72764

479-750-1299

Equal Opportunity Employer and Drug Free Workplace



Affordable Medical and Dental Training

For over 30 years we have been dedicated to providing affordable, quality education and hands-on training that prepares students for entry-level healthcare positions and national certification.



ENROLL TODAY

PetraAlliedHealth.com | 479-750-9876

Licensed by Arkansas Division of Higher Education



Circle of Life seeking experienced, compassionate candidates to join our TEAM!

- Administrative Assistant (FT)
- After Hours RN (PT)
- CNA Inpatient (PRN & FT)
- CNA Outpatient (FT)
- Hospitality Manager
- LPN Inpatient Days
- LPN Inpatient Nights
- Night Call Nurse (PRN)
- Outpatient LPN FT Weekdays
- RN Case Manager (FT Outpatient)
- RN Inpatient - Nights
- RN Liaison
- RN Outpatient (PT and PRN)
- Social Worker (FT)
- Volunteer Administrative Assistant (PT)

Apply online at: nwacircleoflife.org
Contact Human Resources at: 479-872-3366 or 479-872-3397

Earlene Howard Hospice Home
901 Jones Road | Springdale, AR 72762

Marie & John Carr Hospice Home
1201 NE Legacy Parkway | Bentonville, AR 72712
Drug Free Workplace Equal Opportunity Employer



JOIN OUR TEAM

Do you have a love for helping others?

Become a Personal Care Assistant!

Have no personal care assistant background? No problem! We can TRAIN you with FREE 40-hour Personal Care Training ONLINE!

- Earn bonuses
- Have paid holidays
- **Work up to 40 hours** per week
- Have a flexible part-time work schedule
- Participate in voluntary benefits programs - Including participation in 403(b) retirement plans.
- This is a Safety-Sensitive job for purposes of the AR M.M.A.

Call (870) 741-1144 or 1-800-432-9721 to check out our: **\$300 Hire-On bonus and bi-weekly retention bonuses!**

For more information or to apply:
aanwar.org/Employment

EEO | Employer/AA/M/F/Vet/Disabled
 Employment subject to background check and drug screening.



WE ARE HIRING!
 Join Our Team

Caregivers Needed

- Flexible Schedules & Locations
- Incentive time off
- Competitive wages
- Caregiver referral bonuses
- 401k/Health/Dental/Vision Insurance
- No Experience Required
- Unique Assignments
- Specialized training
- Direct Deposit
- Assignments cover all of NW AR
- \$11 - \$15/hr Depending on assignment
- Paid Training Provided!!

Apply in person :
 3190 Bella Vista Way
 Bella Vista, AR 72714
 479-855-6000



rah-ar.com

**NOW HIRING
 IN BENTONVILLE, AR**

**MANUFACTURING
 TECHNICIAN**

Apply at or Call: 479-715-4342
gamecomposites.com



Game Composites

First Call®

Your Staffing Source.

Become part of the company that is putting the CARE back into HealthCARE!



First Call, your Medical Staffing and Home Care Specialist, has needs for RNs, LPNs, CNAs and CHHAs for both PART-TIME and FULL-TIME assignments pay rates up to:

RNs: \$49.00 | CNAs: \$26.00

LPNs: \$39.00 | CHHAs: \$18.00

First Call knows I work hard.

First Call knows I care.

First Call knows...*I'm Amazing!*

Come see us in person or Scan QR Code:

7925 N. May Ave
Oklahoma City, OK 73120
405.842.7775

4125 S. Sheridan Rd
Tulsa, OK 74145
918.665.1011

3354 S. National Suite D
Springfield, MO 65807
417.886.1001



Sharpe®

Apply online at www.My-FirstCall.com

Drug testing required. Some restrictions apply.

RETURN. LEARN. EARN.

Take **FREE** courses to earn a GED®, sharpen English skills, prepare for college or advance your career.

Adult Education programs include:

- ▶ High School Equivalency (GED)
- ▶ Career Education / WAGE
- ▶ English for Language Learners (ELL)
- ▶ TANF & SNAP E&T Services

NWACC Adult Education provides equal access to all programs and activities. You must be 18 years or older to participate. Classes paid for with funds from the Department of Career Education, Adult Education Division.

Scan QR code to learn more. ▶



askadulthood@nwacc.edu
www.nwacc.edu/AdultEducation
Shewmaker Center for Workforce Technologies
1000 S.E. Eagle Way,
Bentonville, AR 72712

SPRINGDALE, AR SCHOOL DISTRICT

NOW HIRING BUS DRIVERS



\$19.46 - \$27.25 Per Hour PLUS
\$3900 - \$4800 Incentive Pay
5 hours Each Day & 180 Work Days
Arkansas Teacher Retirement

Health Insurance
Paid CDL Training
Flexible Schedules
No Experience Required

CALL US TODAY!

479-750-8830



**JOIN OUR
TEAM**

**Now Hiring!
Estamos contratando!**

- Maintenance Techs/Tecnico de Mantenimiento
- Electrician/Electricista
- CDL Driver/Conductor CDL
- Sr. Operator in Lowell, AR Plant (Lead)/ Operador Sr. en Lowell (líder)

We Offer/Ofrecemos:

- 3 1/2 Day Work Week/Semana de 3 días y medio
- Competitive Wages & Benefits/Pago y Beneficios Competitivos
- Bonus Earning Potential/Potencial de Bonos
- Day and Night Openings/Posiciones de Dia y Noche
- Advancement Opportunities/Oportunidades de Crecimiento



Apply online/Aplique en línea en:

<https://jobs.crh.com>

Search/ Busque: "MoistureShield"

Apply onsite/Aplique en Persona:

Mon/Lunes – Fri/Viernes: 9 am – 4 pm

801 N. Jefferson St.

Springdale, AR 72764

479-750-1299

Equal Opportunity Employer and Drug Free Workplace

**New Year!
New Rates!**



Day & Night Shift Production Positions

NEW Pay Rates starting at: \$16.50 to \$17.00

\$1.50 Pay Increase after 90 days!

\$1.00 Shift Premium!

\$\$ BONUS PROGRAMS \$\$

RETENTION BONUS EARNING POTENTIAL: **UP TO \$2000**

INSURANCE BENEFITS EFFECTIVE FIRST OF THE MONTH FOLLOWING 30 DAYS OF EMPLOYMENT!

Apply online TODAY at:

careers.butterball.com

Don't have a computer at home? Apply onsite using our computers

Mon. - Fri., 9 a.m. - 4 p.m.

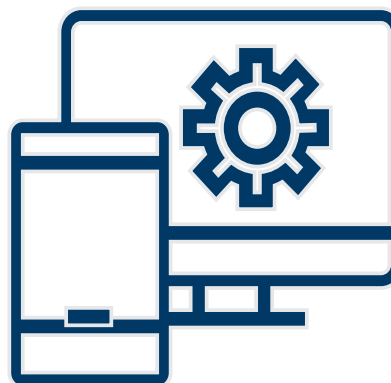
Butterball, LLC | 1294 N. College Street, Huntsville, AR | 479-738-2151

This position is deemed Safety Sensitive for purposes of Butterball's Drug/Alcohol Screening & Testing Policy. Details will be provided to individuals who receive a conditional job offer, or upon request. EOE including Disability/Vets.



MARTINEZ AGENCY

WE BUILD WEBSITES...



martinez-agency.com

866-641-7692



OZARK REGIONAL TRANSIT AUTHORITY

**We're Hiring Full & Part Time
Driver Positions
for our GROWING Routes!**



***Routes available
throughout NWA!***

Excellent Benefits:
Health, Vision, Dental,
Paid Holidays, Paid
Vacations, Retirement
with employer match



Women & Minorities are encouraged to apply

**In Person at ORTA Corporate Office:
2423 E Robinson | Springdale, AR 72764
For more information call: 479-361-8741 or
479-361-8752 by email: tbatres@ozark.org**

Apply today: ozark.org

Pre-employment physical, drug test and background check. | An Equal Employment Opportunity Employer



WestRock

Rogers, AR

WestRock is a leading global packaging company and provider of paper and packaging solutions in global consumer and corrugated markets.

On-Site Hiring Event!

Tues., Jan. 24, 2023

- 3 pm
- 4:30 pm
- 6 pm

Wed., Jan. 25, 2023

- 9 am
- 10:30 am
- 12 pm

JOB FAIR

Need to be able to be at the hiring event for up to 2 hours.

Join Us at:
2021 S. 5th St.
Rogers, AR 72758

- Starting pay \$17.54 per hour
- Rate increase to \$18.37 and up after probational period
- 2nd and 3rd shift differential of 36 cents
- **Comprehensive Benefits** - including but not limited to medical, dental, vision and 401k
- **NO MANDATORY WEEKEND OVERTIME**
- Comprehensive training with numerous learning and development opportunities
- A career with a global packaging company where safety, sustainability, and inclusion are business drivers and foundational elements of the daily work



Can't make it in person? Apply online:

westrock.com/careers

WestRock Company is an Equal Opportunity Employer committed to creating and maintaining a diverse workforce: Minorities/Females/Disabled/Veterans

NOW HIRING

POLICE RECORDS

Part-time Custodian

for the new Bella Vista Public Safety Facility

- \$17/hr
- 24-28 hrs/weekly
- Flexible hours
based on city's needs and applicant's availability



Apply online at:
bellavistaar.gov/employment

*Extensive background check will be conducted.

WE ARE HIRING

Join our team in Bentonville, AR!

Operations and Warehouse Positions Available

Embroidery & Patch Machine Operators starting at \$15 per hr plus differential pay depending on the shift.

Excellent benefits after 60 days of employment. Medical, Dental, Vision, 401K etc., and 4 day work week in Production.

For full job descriptions and to apply, please visit:
www.outdoorcap.com/careers or scan QR code.

Outdoor Cap is an equal opportunity employer.





CRH is the leading local distributor for products such as rock and asphalt as well as a road construction company. *Many of our positions are designed to train you on the job with little to no experience required.* APAC, Standard Materials and Arkhola are part of the CRH family.

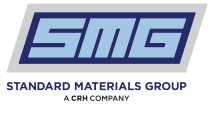


Apac/SMG AR Openings for NW AR

Contact: (479) 684-5005 or (479) 263-2177 for details. | Se Habla Español

Potential Sign On Bonus of up to \$1,500!

- Concrete Foreman
- Heavy Construction Equipment Operators
- Electrician
- Finishers
- CDL Trainees
- Accounting Roles:
 - Payroll
 - Receivables
 - Payables
- Quarry Worker (Harrison AR)
- Safety Representative
- Paving Laborers
- Ready Mix Class B CDL Drivers
- Operations Support Rep.- Bilingual Preferred



Arkhola Openings for Fort Smith, AR

Contact Marsha Hayes at: (479) 788-6365 for details.

Potential Sign On Bonus of up to \$1,500!

- Heavy Equipment Operator
- Ready Mix Truck Drivers
- Quarry Workers



Apac Openings for Muskogee, OK

Contact Marsha Hayes at: (479) 788-6365 for details.

Potential Sign On Bonus of up to \$1,500!

- Class A Heavy Haul Truck Drivers
- Construction Laborer
- Shop Mechanic
- Construction Heavy Equipment Operator
- Dirt Crew Foreperson
- Ready Mix Truck Drivers



SMG Oklahoma Openings for Tulsa, OK

Contact Lisa Chapman at: (918) 556-2236 for details.

Potential Sign On Bonus of up to \$1,000!

- Class A Dump Driver
- Ready Mix Truck Drivers



Apac Oklahoma Openings for Tulsa, OK

Contact Lisa Chapman at: (918) 556-2236 for details.

Potential Sign On Bonus of up to \$1,000!

- Asphalt Plant Mechanic (Not Eligible for Sign-On Bonus)
- Construction Heavy Equipment Operator
- Quality Control Supervisor/Engineer
- Quality Control Manager
- Construction Laborer
- Concrete Finisher
- PT Weekend Days Security Guard
- Quarry Worker
- FT Weekend Nights Security Guard

Competitive Wages, Benefits and Excellent Safety Culture!

You may apply online for any of the above positions and see more listings at:

<https://www.crhamericas.com>

APAC Central Inc. is an Affirmative Action and Equal Opportunity Employer

¡BIENVENIDOS! SERIE de SEMINARIOS en Español

16 de Febrero del 2023

5:30 p.m. - 7:30 p.m.

de la Cámara de Comercio de Rogers-Lowell

Como empezar un negocio en Arkansas: Parte 1 "Los aspectos Legales al empezar un negocio"

Con el apoyo de la miembro y abogada del estado de Arkansas, Lcda. Samantha Vital, hablaremos en detalle acerca de todos los aspectos legales de emprender un negocio, incluyendo todas las formas de establecer su negocio legalmente en Arkansas.

APRENDE MÁS | WWW.ROGERSLOWELL.COM



Don't miss upcoming networking events from the Rogers Lowell Chamber



TUESDAY, FEB. 14 at Cadence Bank 701 S. 52nd St. | Rogers

THURSDAY, FEB. 16 at BHC Insurance 1626 Empire St., Ste. 201 | Lowell



Visit www.RogersLowell.com for more information

INGLES PARA ESTUDIANTES DE IDIOMAS

Toma clases de ELL para mejorar tu inglés.

- ▶ Clases GRATIS
- ▶ Por la Mañana y Por la Tarde

¡INSCRIBASE HOY!

- ▶ Teléfono: 479- 986-6911
- ▶ Shewmaker Center for Workforce Technologies 1000 S.E. Eagle Way, Bentonville, AR

NWCC Adult Education Center provee igual acceso a todos los programas y actividades. Debe ser mayor de 18 años de edad para participar. Pagado con fondos de la División de Educación para Adultos, del Departamento de Carreras o Profesiones en Educación.

Escanea el código QR para aprender más ▶



ADULT EDUCATION

Ladies LEAD NWA HUSTLE in Heels RLC

February Luncheon

Thursday, February 9 | Supply Chain Hall of Fame 11:30 a.m. - 1:00 p.m. | 5111 W JB Hunt Drive, Rogers

Meeting room is on the top floor of the parking garage

Guest speaker:

Natalie Bartholomew
NWA Community President with First Community Bank
"The Girl Banker"

Registration Required. Learn More at RogersLowell.com



#HeelsNotRequired

Lindsey Management Co., Inc. provides management services to the multifamily apartment properties listed. Thinking about a new career? Want to save time and money commuting? Consider a position in Property Management!



We are currently hiring Assistant Managers, Leasing Consultants & Maintenance Technicians at various locations. These positions are key to the successful management of apartment communities and positions that can lead to management.



Visit Indeed.com to view current job listings!

Apartment Communities Located throughout Arkansas!

NW Arkansas Locations

FAYETTEVILLE

| | |
|-------------------------------------|--------------|
| Appleby..... | 479.443.9258 |
| Chestnut II..... | 479.521.6895 |
| The Cliffs I..... | 479.582.2540 |
| The Cliffs II..... | 479.444.0400 |
| Cornerstone I/II..... | 479.443.3507 |
| Crafton Place/Starrfire..... | 479.521.6895 |
| Crossover Terrace..... | 479.443.9744 |
| East Oaks/Oakshire I/II..... | 479.443.7278 |
| Fair Park..... | 479.587.9395 |
| The Greens at Lakeside Village..... | 479.442.7663 |
| Lakeside Village..... | 479.443.9022 |
| The Links at Fayetteville..... | 479.966.4340 |
| The Greens at Fayetteville..... | 479.966.4340 |
| The Fairways at Fayetteville..... | 479.966.4340 |
| Markham Hill..... | 479.443.9333 |
| Paradise View..... | 479.521.8299 |
| The Park I/II..... | 479.443.9804 |
| Shiloh..... | 479.442.4384 |
| Southern View I/II..... | 479.443.6698 |
| Stearns Street..... | 479.527.9851 |
| Valley Lake..... | 479.444.9744 |
| Vantage Center..... | 479.527.9851 |
| Vantage Center North..... | 479.527.9851 |
| <u>SPRINGDALE</u> | |
| Bridgestone..... | 479.751.8866 |
| Eastwood..... | 479.927.0676 |
| Johnson Meadows..... | 479.756.1312 |
| The Trails at the Crossings..... | 479.717.6868 |
| The Links at Springdale I/II..... | 479.750.1515 |
| Station..... | 479.756.1312 |
| Sunset/Holcomb..... | 479.750.3030 |
| Walnut Tree..... | 479.751.8866 |
| West End Place/Pleasant Point..... | 479.750.3030 |
| <u>LOWELL</u> | |
| The Links at Lowell..... | 479.770.2100 |
| <u>ROGERS</u> | |
| Brentwood I/II..... | 479.631.5800 |
| Briarwood..... | 479.631.5800 |
| Doubletree I/II..... | 479.631.5800 |
| Edgewood..... | 479.631.5800 |
| The Fairways at Lost Springs..... | 479.621.0277 |
| The Greens at Lost Springs..... | 479.631.6515 |
| The Greens on Blossom Way..... | 479.631.2024 |
| Lost Springs..... | 479.621.9399 |
| Turtle Creek I/II/Park..... | 479.631.1444 |

BENTONVILLE

| | |
|---------------------------------|--------------|
| Copperstone I/II..... | 479.271.9300 |
| Delmar..... | 479.273.5283 |
| The Links at Bentonville..... | 479.271.0205 |
| The Links at Rainbow Curve..... | 479.657.6446 |
| The Trails at Bentonville..... | 479.657.6633 |
| Moberly Manor I/II..... | 479.273.2540 |
| Moberly Place..... | 479.273.3533 |
| Walton Crossing..... | 479.268.4237 |
| <u>SILLOAM SPRINGS</u> | |
| Spring Valley I/II..... | 479.549.3213 |

Central & Eastern Arkansas Locations

BENTON

| | |
|------------------------------|--------------|
| Dogwood Lakes..... | 501.794.3000 |
| Fountain Lakes..... | 501.778.3134 |
| The Greens at Longhills..... | 501.860.6968 |

BRYANT

| | |
|--------------------------------------|--------------|
| The Fairways at Hurricane Creek..... | 501.847.7747 |
| The Greens at Hurricane Creek..... | 501.847.2586 |
| The Lakes at Hurricane Creek..... | 501.847.6178 |

CONWAY

| | |
|-------------------------------------|--------------|
| Centennial Valley I/II..... | 501.513.2555 |
| The Fairways at Nutters Chapel..... | 501.205.8230 |
| Fox Run..... | 501.327.8739 |
| Germantown..... | 501.329.0767 |
| The Greens at Nutters Chapel..... | 501.450.7056 |
| Lake Pointe..... | 501.336.0900 |
| The Links at Cadron Valley..... | 501.513.0000 |
| Salem Park..... | 501.329.5900 |
| Westlake..... | 501.513.9392 |

FORT SMITH

| | |
|------------------------------|--------------|
| The Links at Fort Smith..... | 479.648.8080 |
| Pike Place..... | 479.782.6686 |

HARRISON

| | |
|----------------------------|--------------|
| The Links at Harrison..... | 870.365.3620 |
|----------------------------|--------------|

JONESBORO

| | |
|--------------------------------------|--------------|
| Gladiola Estates/Gladiola Manor..... | 870.933.8333 |
| The Greens at Jonesboro..... | 870.275.6525 |
| The Links at Jonesboro..... | 870.275.6525 |
| Park Lake..... | 870.933.8333 |

LITTLE ROCK

| | |
|------------------------------|--------------|
| The Links at Eagle Hill..... | 501.407.9088 |
| Eagle Hill..... | 501.455.8818 |
| Eagle Nest..... | 501.407.0567 |

NORTH LITTLE ROCK

| | |
|-----------------------------|--------------|
| The Greens at the Rock..... | 501.753.1200 |
| The Links at the Rock..... | 501.812.5020 |

PARAGOULD

| | |
|-----------------|--------------|
| Silverwood..... | 870.239.3815 |
|-----------------|--------------|

RUSSELLVILLE

| | |
|-----------------------|--------------|
| Shadow Lake..... | 479.967.5584 |
| Spring Lake I/II..... | 479.858.7079 |

SHERWOOD

| | |
|----------------------------|--------------|
| The Links at Sherwood..... | 501.833.8010 |
|----------------------------|--------------|

TEXARKANA

| | |
|-----------------------------|--------------|
| The Links at Texarkana..... | 870.773.2295 |
|-----------------------------|--------------|

Oklahoma Locations

GREATER TULSA METRO AREA

BIXBY

| | |
|---------------------------------|--------------|
| The Links on Memorial I/II..... | 918.369.6055 |
|---------------------------------|--------------|

BROKEN ARROW

| | |
|--|--------------|
| The Greens at Broken Arrow I/II/III..... | 918.355.0802 |
| The Greens on Aspen..... | 918.872.8899 |

CLAREMORE

| | |
|---------------|--------------|
| Deer Run..... | 918.343.7326 |
|---------------|--------------|

OWASSO

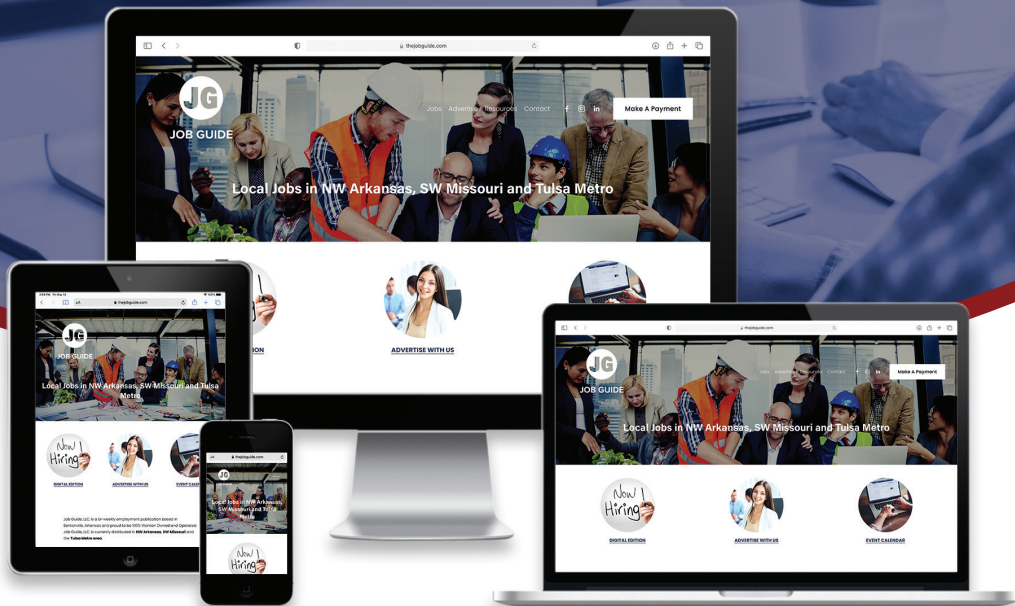
| | |
|----------------------------------|--------------|
| The Greens at Owasso I/II..... | 918.274.4800 |
| The Greens at Owasso III/IV..... | 918.376.4244 |

**Visit LindseyMgmt.com
to view other locations
in Oklahoma, Alabama,
Kansas, Mississippi, and
Missouri.**



MARTINEZ AGENCY

Let Us Help You Build Your Brand



Our Services

Digital

Web Design / Development
E-Commerce Development
Social Media Marketing
Digital Advertising

Creative

Creative Collateral
Package Design
Digital / Social Content
Photography

Branding

Strategy Development
Logo Design / Identity
Brand Architecture
Naming & Taglines

866-641-7692

martinez-agency.com

[@martinezagency](https://twitter.com/martinezagency)