



JOB GUIDE

 @thejobguide88

 @thejobguide88

 /company/the-job-guide

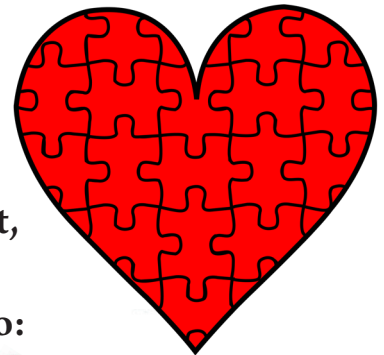
Fall in Love and Become part of the company that is putting the CARE back into HealthCARE!



First Call knows I work hard.

First Call knows I care.

First Call knows...*I'm Amazing!*



First Call, your Medical Staffing and Home Care Specialist, has needs for RNs, LPNs, CNAs and CHHAs for both **PART-TIME** and **FULL-TIME** assignments pay rates up to:

RNs: \$49.00

LPNs: \$39.00

CNAs: \$26.00

CHHAs: \$18.00



Come see us in person or Scan QR Code:



First Call®



Your Staffing Source.

7925 N. May Ave
Oklahoma City, OK 73120
405.842.7775

4125 S. Sheridan Rd
Tulsa, OK 74145
918.665.1011

3354 S. National Suite D
Springfield, MO 65807
417.886.1001



Sharpie

Apply online at www.My-FirstCall.com

Drug testing required. Some restrictions apply.

Issue 03

JOBS

Feb. 03 - Feb. 16, 2023

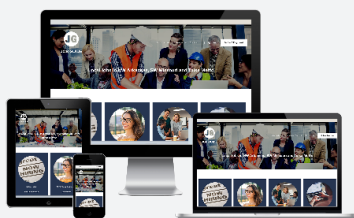
Northwest Arkansas
SW Missouri • Tulsa OK

Free



PRINT

Distributed in NW Arkansas, SW Missouri and Tulsa Metro area.



DIGITAL

Find us at: thejobguide.com



[f @ thejobguide](https://www.facebook.com/thejobguide) [in /company/the-job-guide](https://www.linkedin.com/company/the-job-guide)



Are you a compassionate person, who loves helping others? We are looking for YOU!

Compassionate Caregivers needed to work in the NW AR Region!

**No Experience Required
Paid Training Provided!!**

\$11 - \$15/hr
Depending on assignment

Retired & newly graduated healthcare professions, RNs, PCAs and CNAs encouraged to apply!

- Flexible Schedules & Locations
- Incentive time off
- Competitive wages
- Caregiver referral bonuses
- 401k/Health/Dental/Vision Insurance
- Unique Assignments
- Specialized training
- Direct Deposit



Apply in person:
3190 Bella Vista Way
Bella Vista, AR 72714

Contact TODAY us:
479-855-6000

rah-ar.com

Contact:

PO Box 813 • Rogers, AR. 72757 • 800-654-9776

Sales/Questions:

sunny@thejobguide.com

thejobguide.com

Sunny Martinez

CEO
Job Guide, LLC



Job Guide, LLC is not responsible for ad contents, products or services offered. Job Guide, LLC reserves the right to reject advertising it deems unsuitable and liability does not exceed the cost of the advertisement placed. Any reproductions of the contents of this publication without the written consent of Job Guide, LLC is strictly prohibited.



[f @ thejobguide](https://www.facebook.com/thejobguide) [in /company/the-job-guide](https://www.linkedin.com/company/the-job-guide)

Do you have a love for helping others?

Become a Personal Care Assistant!

Have no personal care assistant background? No problem! We can TRAIN you with FREE 40-hour Personal Care Training ONLINE!

- Earn bonuses
- Have paid holidays
- **Work up to 40 hours** per week
- Have a flexible part-time work schedule
- Participate in voluntary benefits programs - Including participation in 403(b) retirement plans.
- This is a Safety-Sensitive job for purposes of the AR M.M.A.

Call (870) 741-1144 or 1-800-432-9721 to check out our:

\$300 Hire-On bonus and bi-weekly retention bonuses!

For more information or to apply: aanwar.org/Employment

Stop By Our Booth!
JBU Career & Networking Fair 2023
March 7, 2023 | 10 am - 3 pm
Simmons Great Hall, JBU Campus | Siloam Springs, AR
North Arkansas College Career Fair 2023
March 16, 2023 | 10 am - 2 pm
1515 Pioneer Drive | Pioneer Pavilion | Harrison, AR

EEO | Employer/AA/M/F/Vet/Disabled
Employment subject to background check and drug screening.



Now accepting applications for:



**Onsite
Interviews!**

**Friday
Mar. 03, 2023
1 pm - 5 pm**

**1100 W. 15th St.
Fayetteville, AR**

**Operators/Assemblers
Operadores / Ensambladores**
-Up to \$19.27/hour

**Forklift Operators
Operadores de Montacargas**
-Up to \$20.06/hour

**Maintenance Technicians
Técnicos de Mantenimiento**
-Up to \$31.34/hour



CONAGRA™

• B R A N D S •

**Get an early start on the application process!
Apply Today!**



conagrabrands.com



CRH is the leading local distributor for products such as rock and asphalt as well as a road construction company. *Many of our positions are designed to train you on the job with little to no experience required.* APAC, Standard Materials and Arkhola are part of the CRH family.



Apac/SMG AR Openings for NW AR

Contact: (479) 684-5005 or (479) 263-2177 for details. | Se Habla Español

Potential Sign On Bonus of up to \$1,500!

- Concrete Foreman
- Heavy Construction Equipment Operators
- Electrician
- Finishers
- Quarry Worker (Harrison AR)
- CDL Trainees
- Accounting Roles:
 - Payroll
 - Receivables
 - Payables
- Ready Mix Class B CDL Drivers
- Operations Support Rep.- Bilingual Preferred
- Paving Laborers



Arkhola Openings for Fort Smith, AR

Contact Marsha Hayes at: (479) 788-6365 for details.

Potential Sign On Bonus of up to \$1,500!

- Heavy Equipment Operator
- Ready Mix Truck Drivers
- Quarry Workers



Apac Openings for Muskogee, OK

Contact Marsha Hayes at: (479) 788-6365 for details.

Potential Sign On Bonus of up to \$1,500!

- Class A Heavy Haul Truck Drivers
- Construction Laborer
- Shop Mechanic
- Construction Heavy Equipment Operator
- Dirt Crew Foreperson
- Ready Mix Truck Drivers



SMG Oklahoma Openings for Tulsa, OK

Contact Lisa Chapman at: (918) 556-2236 for details.

Potential Sign On Bonus of up to \$1,000!

- Class A Dump Driver
- Ready Mix Truck Drivers



Apac Oklahoma Openings for Tulsa, OK

Contact Lisa Chapman at: (918) 556-2236 for details.

Potential Sign On Bonus of up to \$1,000!

- Asphalt Plant Mechanic (Not Eligible for Sign-On Bonus)
- Construction Heavy Equipment Operator
- Quality Control Supervisor/Engineer
- Construction Laborer
- Concrete Finisher
- Quality Control Manager
- Quarry Worker
- PT Weekend Days Security Guard
- FT Weekend Nights Security Guard

Competitive Wages, Benefits and Excellent Safety Culture!

You may apply online for any of the above positions and see more listings at:

<https://www.crhamericas.com>

APAC Central Inc. is an Affirmative Action and Equal Opportunity Employer

RETURN. LEARN. EARN.

Take **FREE** courses to earn a GED®, sharpen English skills, prepare for college or advance your career.

Adult Education programs include:

- ▶ High School Equivalency (GED)
- ▶ Career Education / WAGE
- ▶ English for Language Learners (ELL)
- ▶ TANF & SNAP E&T Services

NWACC Adult Education provides equal access to all programs and activities. You must be 18 years or older to participate. Classes paid for with funds from the Department of Career Education, Adult Education Division.

Scan QR code to learn more. ▶



askadulter@nwacc.edu
 www.nwacc.edu/AdultEducation
 Shewmaker Center for
 Workforce Technologies
 1000 S.E. Eagle Way,
 Bentonville, AR 72712



CAREER & TRANSITION FAIR

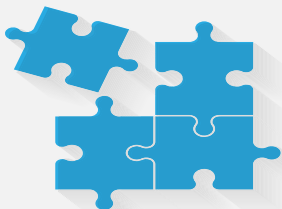
**TUESDAY
MARCH 14TH**

**EVENT TIME
10 AM - 1 PM**

NWACC'S SHEWMAKER CENTER FOR
 WORKFORCE TECHNOLOGIES AND THE
 SHEWMAKER CENTER FOR GLOBAL
 BUSINESS DEVELOPMENT

**ATTENDEE
REGISTRATION**

**COMPANY
REGISTRATION**



JOIN OUR TEAM

Circle of Life seeking experienced, compassionate candidates to join our TEAM!

- Administrative Assistant (FT)
- After Hours RN (PT)
- CNA Inpatient (PRN & FT)
- CNA Outpatient (FT)
- Cook - Bentonville Location
- Hospitality Manager
- LPN Inpatient Days
- LPN Inpatient Nights
- Night Call Nurse (PRN)
- Outpatient LPN FT Weekdays
- RN Case Manager (FT Outpatient)
- RN Inpatient - Nights
- RN Liaison
- RN Outpatient (PT and PRN)
- Social Worker (FT)
- Volunteer Administrative Assistant (PT)
- Weekend Intake RN

Apply online at: nwacircleoflife.org

Contact Human Resources at: 479-872-3366 or 479-872-3397

**Earlene Howard Hospice Home
 901 Jones Road | Springdale, AR 72762**

**Marie & John Carr Hospice Home
 1201 NE Legacy Parkway | Bentonville, AR 72712**
 Drug Free Workplace Equal Opportunity Employer



Affordable Medical and Dental Training

For over 30 years we have been dedicated to providing affordable, quality education and hands-on training that prepares students for entry-level healthcare positions and national certification.



ENROLL TODAY

PetraAlliedHealth.com | 479-750-9876
 Licensed by Arkansas Division of Higher Education



OZARK REGIONAL TRANSIT AUTHORITY

We're Hiring Full & Part Time Driver Positions for our GROWING Routes!



**Routes available
throughout NWA!**

Excellent Benefits:
Health, Vision, Dental,
Paid Holidays, Paid
Vacations, Retirement
with employer match



Women & Minorities are encouraged to apply

**In Person at ORTA Corporate Office:
2423 E Robinson | Springdale, AR 72764
For more information call: 479-361-8741 or
479-361-8752 by email: tbatres@ozark.org**

Apply today: ozark.org

Pre-employment physical, drug test and background check. | An Equal Employment Opportunity Employer



OUTDOOR CAP

WE ARE HIRING

Join our team in Bentonville, AR!

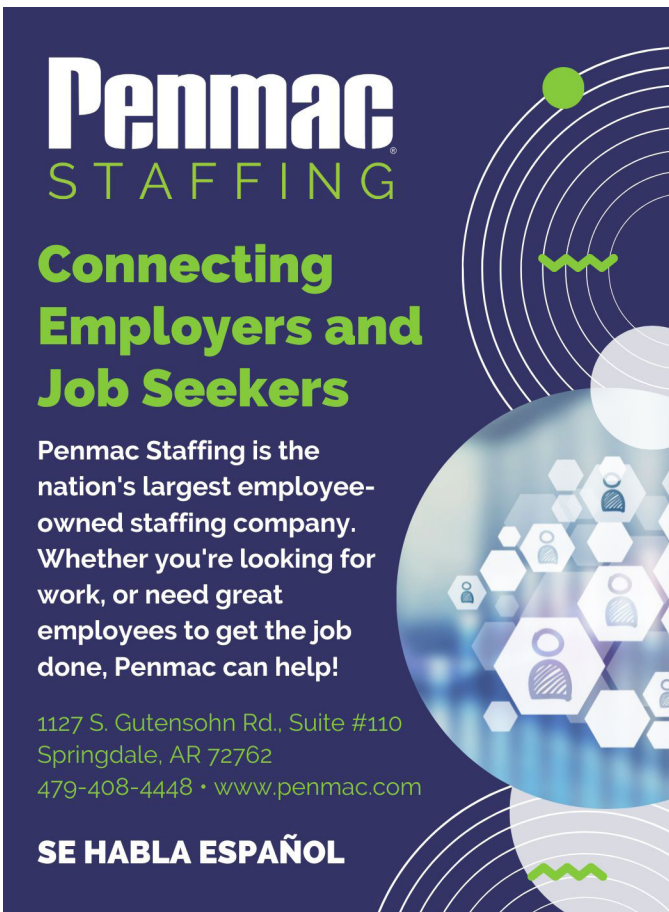
Operations and Warehouse Positions Available

Embroidery & Patch Machine Operators starting at **\$16** per hr plus differential pay depending on the shift.

Excellent benefits after 60 days of employment. Medical, Dental, Vision, 401K etc., and 4 day work week in Production.

For full job descriptions and to apply, please visit: www.outdoorcap.com/careers or scan QR code.

Outdoor Cap is an equal opportunity employer.

Penmac STAFFING

Connecting Employers and Job Seekers

Penmac Staffing is the nation's largest employee-owned staffing company. Whether you're looking for work, or need great employees to get the job done, Penmac can help!

1127 S. Gutensohn Rd., Suite #110
Springdale, AR 72762
479-408-4448 • www.penmac.com

SE HABLA ESPAÑOL



Be a part of an amazing company that is known for custom building and creative problem solving in their field!

Join the Mid-South Steam Boiler team! Immediate Openings for:

Boiler Technician Apprentice

- Basic Electrical & Mechanical Background
- Troubleshooting Mechanical and Basic Electrical Systems
- Understand electrical schematics
- Travel Required

Employment Requirements:

- Clean driving record, that means no moving violations, DUI's
- Pay based on position/experience
- Stable Work History
- Criminal background checks and drug screens performed on all potential employees

Benefits:

- | | | |
|---|--|-----------------|
| • Medical/Dental - Blue Cross/Blue Shield of AR | • AFLAC | • VSP |
| • Kansas City Life New York Life | • Direct Deposit | • Safety Shoes- |
| • Section 125 Cafeteria Plan | Eligible after 1 year of continuous employment | |
| • 401(k) | | EOE |

Ways to become part of the Mid-South Steam Boiler Team:

Apply in Person:
3805 Pointer Trail East
Van Buren, AR 72956
Call: 479-471-1468
Email resume with references to:
jobs@midsouthboiler.com

midsouthboiler.com

**New Year!
New Rates!**



Day & Night Shift Production Positions

NEW Pay Rates starting at: \$16.50 to \$17.00
 \$1.50 Pay Increase after 90 days!
 \$1.00 Shift Premium!

\$\$ BONUS PROGRAMS \$\$

RETENTION BONUS EARNING POTENTIAL: UP TO \$2000
INSURANCE BENEFITS EFFECTIVE FIRST OF THE MONTH FOLLOWING 30 DAYS OF EMPLOYMENT!

Apply online TODAY at:
careers.butterball.com

Don't have a computer at home? Apply onsite using our computers
 Mon.- Fri., 9 a.m.- 4 p.m.

Butterball, LLC | 1294 N. College Street, Huntsville, AR | 479-738-2151
 This position is deemed Safety Sensitive for purposes of Butterball's Drug/Alcohol Screening & Testing Policy. Details will be provided to individuals who receive a conditional job offer, or upon request. EOE including Disability/Vets.

ENGLISH FOR LANGUAGE LEARNER

Take ELL classes to improve your English!

- ▶ **FREE Classes**
- ▶ **Flexible Schedule**

ENROLL TODAY:

- ▶ Call 479-986-6911
- ▶ Visit Shewmaker Center for Workforce Technologies
 1000 S.E. Eagle Way, Bentonville, AR




NWACC Adult Education provides equal access to all programs and activities. You must be 18 years or older to participate. Classes paid for with funds from the Department of Career Education, Adult Education Division.

Scan the QR code to learn more ▶



 **ADULT EDUCATION**



UNIVERSITY OF ARKANSAS

The University of Arkansas, Fayetteville offers employment opportunities in the fields of:

- Maintenance ▪ Custodial
- Computer Technical ▪ Clerical

Current Opportunities Include:

- Imaging Specialist
- Programs and Business Coordinator
- Senior Human Resources Coordinator
- Service Assistant (Current and Anticipated Future Openings)
- UREC Office Manager

The University of Arkansas has an in-house temporary employment staffing service called RazorTemps. Apply to this posting if you are interested in being considered for temporary employment opportunities. These positions vary in length and often provide a 'foot in the door' to permanent employment at the University.

The University of Arkansas provides one of the most comprehensive and competitive benefit packages in the region.

• Health Coverage	• Basic Life	• Vision
• Dental Coverage	• Optional Life	• Short & Long Term Disability
• Prescription Drug	• Tuition Reduction	• Employee Assistance Program and More!
• Retirement	• Paid Holidays	

The University of Arkansas recognized the challenge of balancing work with personal life, and we pro actively look for ways to help our employees do well at both aspects of their lives. This includes creating health insurance and retirement plans that work well; offering work-time options where possible; promoting career and personal development; and giving paid leave for holidays, illness, vacations, children's educational activities and military duty, among others.

To apply for above positions, please visit our website at <https://uasys.wd5.myworkdayjobs.com/UASYS>

For more information, please contact us at **479.575.5351**.

The University of Arkansas is an Equal Opportunity-Affirmative Action Institution.



JOIN OUR TEAM

Do you have a love for helping others?

Become a Personal Care Assistant!

Have no personal care assistant background? No problem! We can TRAIN you with FREE 40-hour Personal Care Training ONLINE!

- Earn bonuses
- Have paid holidays
- Work up to 40 hours per week
- Have a flexible part-time work schedule
- Participate in voluntary benefits programs - Including participation in 403(b) retirement plans.
- This is a Safety-Sensitive job for purposes of the AR M.M.A.

Call (870) 741-1144 or 1-800-432-9721 to check out our:

\$300 Hire-On bonus and bi-weekly retention bonuses!

For more information or to apply: aanwar.org/Employment

EEO | Employer/AA/M/F/Vet/Disabled
Employment subject to background check and drug screening.

SPRINGDALE, AR SCHOOL DISTRICT

NOW HIRING BUS DRIVERS



\$19.46 - \$27.25 Per Hour PLUS
\$3900 - \$4800 Incentive Pay
5 hours Each Day & 180 Work Days
Arkansas Teacher Retirement

Health Insurance
Paid CDL Training
Flexible Schedules
No Experience Required

CALL US TODAY! 479-750-8830



MARTINEZ
SPORTS CARDS

BASKETBALL CARDS BASEBALL CARDS FOOTBALL CARDS

www.martinezsportscards.com



Now accepting applications for:



**Onsite
Interviews!**

**Friday
Mar. 03, 2023
1 pm - 5 pm**

**1100 W. 15th St.
Fayetteville, AR**

**Operators/Assemblers
Operadores / Ensambladores**
-Up to \$19.27/hour

**Forklift Operators
Operadores de Montacargas**
-Up to \$20.06/hour

**Maintenance Technicians
Técnicos de Mantenimiento**
-Up to \$31.34/hour



CONAGRA™

• B R A N D S •

**Get an early start on the application process!
Apply Today!**



conagrabrands.com

Conagra Brands is an Affirmative Action and Equal Opportunity Employer.



Be a part of an amazing company that is known for custom building and creative problem solving in their field!

**Join the Mid-South Steam Boiler team!
Immediate Openings for:**

Boiler Technician Apprentice

- Basic Electrical & Mechanical Background
- Troubleshooting Mechanical and Basic Electrical Systems
- Understand electrical schematics
- Travel Required

Employment Requirements:

- Clean driving record, that means no moving violations, DUI's
- Pay based on position/experience
- Stable Work History
- Criminal background checks and drug screens performed on all potential employees

Benefits:

- | | |
|---|--|
| • Medical/Dental - Blue Cross/Blue Shield of AR | • AFLAC |
| • Kansas City Life New York Life | • VSP |
| • Section 125 Cafeteria Plan | • Direct Deposit |
| • 401(k) | • Safety Shoes- Eligible after 1 year of continuous employment |
- EOE

Ways to become part of the Mid-South Steam Boiler Team:

**Apply in Person:
3805 Pointer Trail East
Van Buren, AR 72956
Call: 479-471-1468**

**Email resume with references to:
jobs@midsouthboiler.com**

midsouthboiler.com

**New Year!
New Rates!**



Day & Night Shift Production Positions

NEW Pay Rates starting at: \$16.50 to \$17.00
\$1.50 Pay Increase after 90 days!
\$1.00 Shift Premium!

\$\$ BONUS PROGRAMS \$\$

RETENTION BONUS EARNING POTENTIAL: UP TO \$2000
INSURANCE BENEFITS EFFECTIVE FIRST OF THE MONTH FOLLOWING 30 DAYS OF EMPLOYMENT!

**Apply online TODAY at:
careers.butterball.com**

Don't have a computer at home? Apply onsite using our computers
Mon. - Fri., 9 a.m. - 4 p.m.

Butterball, LLC | 1294 N. College Street, Huntsville, AR | 479-738-2151
This position is deemed Safety Sensitive for purposes of Butterball's Drug/Alcohol Screening & Testing Policy. Details will be provided to individuals who receive a conditional job offer, or upon request. EOE including Disability/Vets.



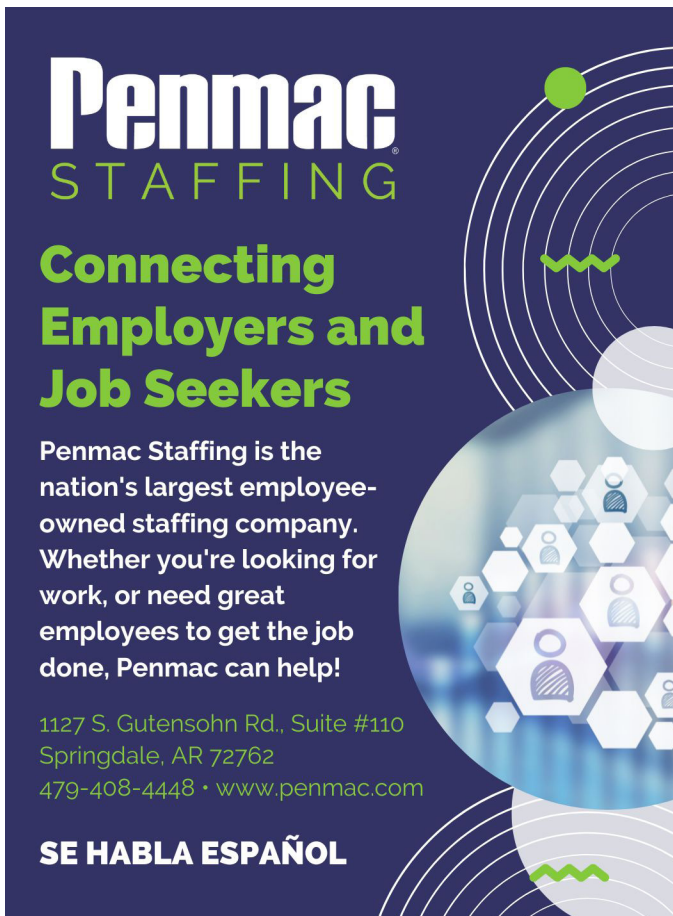
Affordable Medical and Dental Training

For over 30 years we have been dedicated to providing affordable, quality education and hands-on training that prepares students for entry-level healthcare positions and national certification.



ENROLL TODAY

PetraAlliedHealth.com | 479-750-9876
Licensed by Arkansas Division of Higher Education



Penmac
STAFFING

**Connecting
Employers and
Job Seekers**

Penmac Staffing is the nation's largest employee-owned staffing company. Whether you're looking for work, or need great employees to get the job done, Penmac can help!

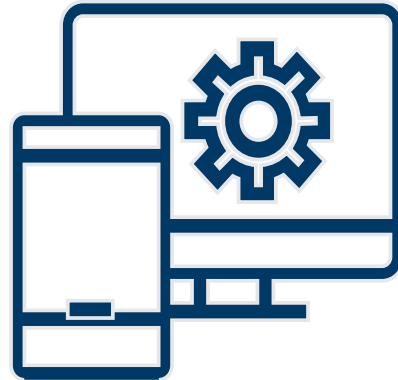
1127 S. Gutensohn Rd., Suite #110
Springdale, AR 72762
479-408-4448 • www.penmac.com

SE HABLA ESPAÑOL



MARTINEZ AGENCY

WE BUILD WEBSITES...



martinez-agency.com
866-641-7692



**ENGLISH FOR
LANGUAGE LEARNER**

Take ELL classes to improve your English!

- ▶ **FREE Classes**
- ▶ **Flexible Schedule**

ENROLL TODAY:

- ▶ Call 479-986-6911
- ▶ Visit Shewmaker Center for Workforce Technologies
1000 S.E. Eagle Way, Bentonville, AR

NWACC Adult Education provides equal access to all programs and activities. You must be 18 years or older to participate. Classes paid for with funds from the Department of Career Education, Adult Education Division.

Scan the QR code to learn more ▶




**ADULT
EDUCATION**



OUTDOOR CAP

WE ARE HIRING
Join our team in Bentonville, AR!

**Operations and Warehouse
Positions Available**

Embroidery & Patch Machine Operators
starting at **\$16** per hr plus differential pay depending on the shift.

Excellent benefits after 60 days of employment. Medical, Dental, Vision, 401K etc., and 4 day work week in Production.

For full job descriptions and to apply, please visit:
www.outdoorcap.com/careers or scan QR code.

Outdoor Cap is an equal opportunity employer.





CRH is the leading local distributor for products such as rock and asphalt as well as a road construction company. *Many of our positions are designed to train you on the job with little to no experience required.* APAC, Standard Materials and Arkhola are part of the CRH family.



Apac/SMG AR Openings for NW AR

Contact: (479) 684-5005 or (479) 263-2177 for details. | Se Habla Español

Potential Sign On Bonus of up to \$1,500!

- Concrete Foreman
 - Finishers
- Quarry Worker (Harrison AR)
- Ready Mix Class B CDL Drivers
- Heavy Construction Equipment Operators
- CDL Trainees
- Safety Representative
- Operations Support Rep.- Bilingual Preferred
- Electrician
- Accounting Roles:
 - Payroll
 - Receivables
 - Payables
- Paving Laborers



Arkhola Openings for Fort Smith, AR

Contact Marsha Hayes at: (479) 788-6365 for details.

Potential Sign On Bonus of up to \$1,500!

- Heavy Equipment Operator
- Quarry Workers
- Ready Mix Truck Drivers



Apac Openings for Muskogee, OK

Contact Marsha Hayes at: (479) 788-6365 for details.

Potential Sign On Bonus of up to \$1,500!

- Class A Heavy Haul Truck Drivers
- Construction Heavy Equipment Operator
- Construction Laborer
- Dirt Crew Foreperson
- Ready Mix Truck Drivers
- Shop Mechanic



SMG Oklahoma Openings for Tulsa, OK

Contact Lisa Chapman at: (918) 556-2236 for details.

Potential Sign On Bonus of up to \$1,000!

- Class A Dump Driver
- Ready Mix Truck Drivers



Apac Oklahoma Openings for Tulsa, OK

Contact Lisa Chapman at: (918) 556-2236 for details.

Potential Sign On Bonus of up to \$1,000!

- Asphalt Plant Mechanic (Not Eligible for Sign-On Bonus)
- Construction Laborer
- Construction Heavy Equipment Operator
- Concrete Finisher
- Quarry Worker
- Quality Control Supervisor/Engineer
- Quality Control Manager
- PT Weekend Days Security Guard
- FT Weekend Nights Security Guard

Competitive Wages, Benefits and Excellent Safety Culture!

You may apply online for any of the above positions and see more listings at:

<https://www.crhamericas.com>

APAC Central Inc. is an Affirmative Action and Equal Opportunity Employer



Don't miss upcoming networking events from the Rogers Lowell Chamber



TUESDAY, FEB. 14
at Cadence Bank
701 S. 52nd St. | Rogers



THURSDAY, FEB. 16
at BHC Insurance
1626 Empire St., Ste. 201 | Lowell

Visit www.RogersLowell.com for more information



16 de Febrero del 2023
5:30 p.m. - 7:30 p.m.
de la Cámara de Comercio de Rogers-Lowell

Como empezar un negocio en Arkansas: Parte 1 "Los aspectos Legales al empezar un negocio"

Con el apoyo de la miembro y abogada del estado de Arkansas, Lcda. Samantha Vital, hablaremos en detalle acerca de todos los aspectos legales de emprender un negocio, incluyendo todas las formas de establecer su negocio legalmente en Arkansas.

APRENDE MÁS | WWW.ROGERSLOWELL.COM



HUSTLE in Heels
February Luncheon

Thursday, February 9 | Supply Chain Hall of Fame
11:30 a.m. - 1:00 p.m. | 5111 W JB Hunt Drive, Rogers

Meeting room is on the top floor of the parking garage

Guest speaker:
Natalie Bartholomew
NWA Community President with
First Community Bank
"The Girl Banker"

Registration Required.
Learn More at RogersLowell.com



#HeelsNotRequired



CAREER & TRANSITION FAIR

TUESDAY MARCH 14TH **EVENT TIME 10 AM - 1 PM**

NWACC'S SHEWMAKER CENTER FOR WORKFORCE TECHNOLOGIES AND THE SHEWMAKER CENTER FOR GLOBAL BUSINESS DEVELOPMENT

ATTENDEE REGISTRATION **COMPANY REGISTRATION**



Lindsey Management Co., Inc. provides management services to the multifamily apartment properties listed. Thinking about a new career? Want to save time and money commuting? Consider a position in Property Management!



We are currently hiring Assistant Managers, Leasing Consultants & Maintenance Technicians at various locations. These positions are key to the successful management of apartment communities and positions that can lead to management.



Visit Indeed.com to view current job listings!

Apartment Communities Located throughout Arkansas!

NW Arkansas Locations

FAYETTEVILLE

Appleby.....	479.443.9258
Chestnut II.....	479.521.6895
The Cliffs I.....	479.582.2540
The Cliffs II.....	479.444.0400
Cornerstone I/II.....	479.443.3507
Crafton Place/Starrfire.....	479.521.6895
Crossover Terrace.....	479.443.9744
East Oaks/Oakshire I/II.....	479.443.7278
Fair Park.....	479.587.9395
The Greens at Lakeside Village.....	479.442.7663
Lakeside Village.....	479.443.9022
The Links at Fayetteville.....	479.966.4340
The Greens at Fayetteville.....	479.966.4340
The Fairways at Fayetteville.....	479.966.4340
Markham Hill.....	479.443.9333
Paradise View.....	479.521.8299
The Park I/II.....	479.443.9804
Shiloh.....	479.442.4384
Southern View I/II.....	479.443.6698
Stearns Street.....	479.527.9851
Valley Lake.....	479.444.9744
Vantage Center.....	479.527.9851
Vantage Center North.....	479.527.9851
<u>SPRINGDALE</u>	
Bridgestone.....	479.751.8866
Eastwood.....	479.927.0676
Johnson Meadows.....	479.756.1312
The Trails at the Crossings.....	479.717.6868
The Links at Springdale I/II.....	479.750.1515
Station.....	479.756.1312
Sunset/Holcomb.....	479.750.3030
Walnut Tree.....	479.751.8866
West End Place/Pleasant Point.....	479.750.3030
<u>LOWELL</u>	
The Links at Lowell.....	479.770.2100
<u>ROGERS</u>	
Brentwood I/II.....	479.631.5800
Briarwood.....	479.631.5800
Doubletree I/II.....	479.631.5800
Edgewood.....	479.631.5800
The Fairways at Lost Springs.....	479.621.0277
The Greens at Lost Springs.....	479.631.6515
The Greens on Blossom Way.....	479.631.2024
Lost Springs.....	479.621.9399
Turtle Creek I/II/Park.....	479.631.1444

BENTONVILLE

Copperstone I/II.....	479.271.9300
Delmar.....	479.273.5283
The Links at Bentonville.....	479.271.0205
The Links at Rainbow Curve.....	479.657.6446
The Trails at Bentonville.....	479.657.6633
Moberly Manor I/II.....	479.273.2540
Moberly Place.....	479.273.3533
Walton Crossing.....	479.268.4237
<u>SILLOAM SPRINGS</u>	
Spring Valley I/II.....	479.549.3213

Central & Eastern Arkansas Locations

BENTON

Dogwood Lakes.....	501.794.3000
Fountain Lakes.....	501.778.3134
The Greens at Longhills.....	501.860.6968

BRYANT

The Fairways at Hurricane Creek.....	501.847.7747
The Greens at Hurricane Creek.....	501.847.2586
The Lakes at Hurricane Creek.....	501.847.6178

CONWAY

Centennial Valley I/II.....	501.513.2555
The Fairways at Nutters Chapel.....	501.205.8230
Fox Run.....	501.327.8739
Germantown.....	501.329.0767
The Greens at Nutters Chapel.....	501.450.7056
Lake Pointe.....	501.336.0900
The Links at Cadron Valley.....	501.513.0000
Salem Park.....	501.329.5900
Westlake.....	501.513.9392

FORT SMITH

The Links at Fort Smith.....	479.648.8080
Pike Place.....	479.782.6686

HARRISON

The Links at Harrison.....	870.365.3620
----------------------------	--------------

JONESBORO

Gladiola Estates/Gladiola Manor.....	870.933.8333
The Greens at Jonesboro.....	870.275.6525
The Links at Jonesboro.....	870.275.6525
Park Lake.....	870.933.8333

LITTLE ROCK

The Links at Eagle Hill.....	501.407.9088
Eagle Hill.....	501.455.8818
Eagle Nest.....	501.407.0567

NORTH LITTLE ROCK

The Greens at the Rock.....	501.753.1200
The Links at the Rock.....	501.812.5020

PARAGOULD

Silverwood.....	870.239.3815
-----------------	--------------

RUSSELLVILLE

Shadow Lake.....	479.967.5584
Spring Lake I/II.....	479.858.7079

SHERWOOD

The Links at Sherwood.....	501.833.8010
----------------------------	--------------

TEXARKANA

The Links at Texarkana.....	870.773.2295
-----------------------------	--------------

Oklahoma Locations

GREATER TULSA METRO AREA

BIXBY

The Links on Memorial I/II.....	918.369.6055
---------------------------------	--------------

BROKEN ARROW

The Greens at Broken Arrow I/II/III.....	918.355.0802
The Greens on Aspen.....	918.872.8899

CLAREMORE

Deer Run.....	918.343.7326
---------------	--------------

OWASSO

The Greens at Owasso I/II.....	918.274.4800
The Greens at Owasso III/IV.....	918.376.4244

**Visit LindseyMgmt.com
to view other locations
in Oklahoma, Alabama,
Kansas, Mississippi, and
Missouri.**



Let Us Help You Build Your Brand

Digital

Web Design / Development
E-Commerce Development
Social Media Marketing
SEO

Creative

Creative / Collateral
Package Design
Social Content
Photography

Branding

Strategy Development
Logo Design / Identity
Brand Architecture
Naming & Taglines

866-641-7692

martinez-agency.com

[@martinezagency](https://twitter.com/martinezagency)