

JOB GUIDE

Jobs in Northwest Arkansas • Southwest Missouri • Tulsa Metro



Exceptional Quality, Exceeding Expectations

Southeast Poultry is a further processing facility in Rogers, AR, providing it's team members with a clean, friendly working environment. We are not a big facility, so as an employee, you're not just a number. We are in search of hard workers with all levels of skill and previous experience. We offer on the job training to provide the skills for employees to grow into other positions. Southeast Poultry provides our team members with the ability to grow by promoting from within our workforce.

Join Our Team TODAY!

**Production, Cone Line,
Portioning & Dark Meat**
1st and 2nd Shift

Industrial Maintenance
1st, 2nd and 3rd Shift
EXCELLENT pay rates

Orientations Daily!
Sign on bonus up to **\$2000**
over first 6 months of
employment for newly hired
employee's.

*Apply
Now*

*Excellent pay rates:
Up to \$20.50 per hr!
Relocation Assistance Available
Paid Weekly
Company provided lunches*

southeastpoultry.com

Or pick up an application at:

2200 Town West Dr. | Rogers, AR 72756

Se Habla Espanol | EOE

Issue

Volume 33 Issue 08
Apr. 16 - Apr. 29, 2021

Advertise

thejobguide.com
800-654-9776

Free

Established 1988

Say you saw it in the **Job Guide**



PRINT AND DIGITAL



COVERAGE MAP

PRINT COVERAGE

Distributed in NW Arkansas, SW Missouri and Tulsa Metro Area in Workforce Centers, Grocery Stores, Goodwill Centers, Restaurants, Colleges and many more!
2 Full Weeks of Coverage!

DIGITAL COVERAGE

Company profile and jobs listed on our website: thejobguide.com. Thousands of visitors per month find our website... they will find you!

COST EFFECTIVE SINCE 1988

No contracts! Graphic design and digital included. Woman owned and locally operated. Let Us Help You Get Results!

JOB GUIDE

Notice to our Advertisers and Readers:

Job Guide is not responsible for ad contents, products or services offered. **Job Guide** reserves the right to reject advertising it deems unsuitable and liability does not exceed the cost of the advertisement placed. Any reproductions of the contents of this publication without the written consent of the Publisher is strictly prohibited.

Printing
Stigler Printing

Distribution
Job Guide
Arkansas Rack Program
Distributech

P.O. Box 813
Rogers, AR. 72757
Phone: 800-654-9776
Fax: 888-232-7659
www.TheJobGuide.com



@thejobguide88



@thejobguide88



/company/the-job-guide

CEO | Publisher
Sunny Martinez

Want to be apart of an amazing company that is known for custom building and creative problem solving in their field?

JOIN THE MID-SOUTH STEAM BOILER TEAM!

IMMEDIATE OPENINGS FOR:

EXPERIENCED WELDERS



- Stick
- Mig
- Tig
- Pipe
- Structural
- Flux Core

Must pass welding test

BOILER TECHNICIAN APPRENTICE



- Basic Electrical & Mechanical Background
- Troubleshooting Mechanical and

- Basic Electrical Systems
- Understand electrical schematics
- Travel Required

EMPLOYMENT REQUIREMENTS:

- Clean driving record, that means no moving violations, DUI's
- Pay based on position/experience
- Stable Work History
- Must be at least 21
- Criminal background checks and drug screens performed on all potential employees

Full Time Positions | Benefits Package Available

3 WAYS TO APPLY:

EMAIL | FAX | ONLINE

- Email: Resume with references to jobs@midsouthboiler.com
- Fax: (479) 262-6446

midsouthboiler.com

Cargill now hiring for the following position:

Offal Operators Floater

Cargill Offers:

- Competitive Wages & Weekly Bonus Programs
- Overtime available
- Paid vacation and holidays
- Full Benefit package including medical, dental, vision and 401K



\$1,500

Sign-On Bonus!


Starting Rate: \$18.00+ Weekly bonuses

Apply online:
www.cargill.com/springdale



JOIN
OUR
TEAM

Cargill is an Equal Opportunity Employer, including Disability/Vet. Drug Free Employer



McKee Foods Corporation, manufacturer of America's # 1 snack cakes, **Little Debbie® snack cakes**, located in Gentry, AR, is taking applications for a:

Refrigeration Mechanic

Full-Time, 2nd Shift

Duties includes the repair and maintenance of rooftop and split system HVAC units, spot coolers, window units, process chillers, screw compressor refrigeration units, cooling towers, ice machines, cooling rooms and freezers, warehouse heaters and supply and exhaust fans.

Applicant should have:

- Two years refrigeration training or industrial refrigeration and electrical controls experience.
- A well-rounded background in halogen based refrigeration repair and maintenance.
- Possess or be able to attain Universal Refrigerant Handling Certification within 30 days of initial employment.

We Offer:

- Competitive pay scale
- Excellent benefits, including medical, Dental, 401(k), profit-sharing and fitness center
- A work environment that is clean, safe and tobacco-free
- Promotion opportunities for high performers

Apply on-line at: mckeefoods.com

Equal Opportunity Employer M/F/V/D

START
A NEW
CAREER

Immediate
Openings

Flex & Part
Time

MUST work
Nights &
Weekends!

Securitas Security Services USA is now hiring IMMEDIATELY for:

SECURITY OFFICERS

Minimum Requirements:

- At least 18 years old
- Clean Background
- Reliable means of communication and transportation
- High School Diploma or GED
- MUST be able to work flexible hours

If you want to be part of a team that promotes Integrity, Vigilance, and Helpfulness, join us.

Veterans and retired Law Enforcement encouraged to apply.

www.SecuritasJobs.com

Call for information: 479-659-5071

Or Apply in person: 324 N. Bloomington, Suite B/C, Lowell, AR 72745

Securitas Security Services USA is an Equal Opportunity Employer
Regulated by: Dept of AR State Police, 1 State Police Plaza Dr, Little Rock AR 72209. 501-618-8600 CMPY.0001241




NOW HIRING! Springdale Public Schools

is now accepting applications for
Part-Time and/or Full-Time

BUS DRIVERS

- 8 paid holidays
- Teacher Retirement benefits available for full-time employees.
- Other duties may be available with additional pay.
- **Paid Training is available.**

Beginning Drivers starting pay \$71.47 per day (w/no exp.)

Refer to transportation salary schedule online for complete pay scale

Apply in person at 1612 E. Emma Ave, Springdale, AR 72764
Or applications are available online:

apply.sdale.org

Click the **Apply Now tab - Bus Driver Position**
Or call Trisha Labit for more info @ **479-750-8830**

LOOKING FOR A SECOND SHIFT JOB?



Bentonville Plastics currently has openings for second shift production. Days: Monday-Thursday 4:30PM to 3AM
GOOD ATTENDANCE IS REQUIRED.

The successful candidates must be able to:

- Stand, bend, and trim for 10 hrs a day
- Possess basic math skills
- Be able to lift a maximum of 50 lbs
- Be able to follow basic verbal instructions.
- Job tasks include parts inspection, trimming parts, counting parts, boxing parts and other duties as supervisor requires.
- Attendance policy is STRICTLY enforced.



BENTONVILLE PLASTICS, INC.
CUSTOM INJECTION MOLDING SINCE 1985



EOE

**Must apply in person at
Bentonville Plastics:
607 SW A Street
Bentonville, AR 72712**

PROCLEAN

Carpet and Upholstery Cleaning

ProClean is a family owned and operated business. We are committed to providing our clients with the best service available. Join our team TODAY!

Full Time Carpet Cleaner - NWA Region \$11.00 - \$11.50/hr

Supplemental Pay: Bonus Pay, Commission Pay
Benefits: Paid Time Off

Job Description: Hourly or salary pay to start. Vacation after one year. Traveling in our carpet cleaning van from one job to the next, primarily in NWA, likely as a helper to start.

Full Time Carpet Cleaner - TRAVELING \$11.00-\$11.50/hr

Supplemental Pay: Bonus Pay, Commission Pay
Benefits: Paid Time Off

Job Description: Hourly or salary pay to start. \$75 weekly food allowance while traveling abroad. Vacation after one year.

Hotel room provided while traveling abroad on assignment.

Part Time Quick Books Office Clerk - Goshen, AR Starting Pay: \$11-00 - \$12.00/hr

Schedule can be flexible
Benefits: Paid Time Off

Candidates must be strong, honest, dependable, able to get along with others and a hard worker. Applicants will need to pass a drug test and have long term verifiable work history.

Email Resume to: billing@procleancarpet.com
You will then be contacted by phone or text.

WE ARE HIRING

Join our team in Bentonville, AR!



We are hiring for several positions in Embroidery and Warehouse.

These are Full Time Regular positions that are eligible for benefits after 60 days of employment. *Eligible for monthly production bonuses!* All applicants must pass background check and drug screen.



For full job descriptions
and to apply, please visit:
www.outdoorcap.com/careers

Outdoor Cap is an equal opportunity employer.



Lassonde

LASSONDE PAPPAS
AND COMPANY, INC.

A world leader in the production of fruit juice and related products,
Now Hiring in ALL DEPARTMENTS in our
Springdale, AR facility:

Production/Batching/Warehouse

- Starting Pay: \$15/hr 50 cent increase after 90 days
- 6pm-6am 3~4 shift pattern
- Benefits 1st of the month following 30 days of employment
- Vacation and PTO pro-rated for 2021

Apply online:

lassondepappas.com

EEO/AAP



MoistureShield

COMPOSITE DECKING

Accepting Applications:

Machine Operators
Equipment Operators
Maintenance Tech
Quality Techs
General Labor

We Offer:

- 3 1/2 Day Work Week
- Competitive Wages & Benefits
- Bonus Earning Potential
- Day and Night Openings
- Advancement Opportunities

Apply online today at:

<https://jobs.crh.com>

Search "MoistureShield"

Apply onsite:

Monday – Friday 9 a.m – 4 p.m
801 N. Jefferson St.
Springdale, AR 72764
479-750-1299

¡Únete al Equipo de MoistureShield!

Aceptando Aplicaciones:

Operadores de Maquina
Operadores de Equipo Industrial
Mecánicos
Control de Calidad
Producción General

Ofrecemos:

- Semana de 3 días y medio
- Pago y Beneficios Competitivos
- Potencial de Bonos
- Posiciones de Día y Noche
- Oportunidades de Crecimiento

Aplice en línea en:

<https://jobs.crh.com>

Busque "MoistureShield"

Aplice en Persona:

Lunes – Viernes 9 a.m – 4 p.m
801 N. Jefferson St.
Springdale, AR 72764
479-750-1299

Equal Opportunity Employer and Drug Free Workplace



Huntsville, AR

We're Hiring: Production Positions

Day & Night Shift Available



NEW Pay Rates starting at \$14.90 up to \$15.40!

\$1.00 Pay Increase after 90 days!

\$1.00 Shift Premium!

Bonus Earning Potential up to \$300

Apply online today at:

careers.butterball.com

Don't have a computer at home?

Apply onsite: Mon.- Fri., 9 a.m.-4 p.m.
1294 N. College Street, Huntsville, AR
479-738-2151

Butterball, LLC is an Equal Opportunity/Affirmative Action Employer and does not discriminate against applicants for employment based on their race, sex, color, religion, national origin, genetic information, sexual orientation, gender identity, marital status, disability, or veteran status.

Ozark Regional Transit

Full Time Drivers Needed

New pay rate! \$12.50/hr
Paid Training available

Women & Minorities encouraged to apply

Excellent Benefits:

Health, Vision, Dental, Paid Vacations,
457(b) retirement with employer match

Apply online only: www.ozark.org

For more information call Human Resources:
479-361-8752 or email: gdelancey@ozark.org
2423 E Robinson, Springdale, AR



Pre-employment physical, drug test and background check.
An Equal Employment Opportunity Employer



The University of Arkansas,
Fayetteville offers
employment opportunities in
the fields of:
Maintenance ■ Custodial ■
Computer Technical ■ Clerical

Current Opportunities Include:

- Administrative Analyst
- Assistant to the Dean of Students
- Assistant Technology Store Sales Manager
- Athletic Facility Supervisor
(Two Open Positions)
- Bus Operator (Five Open Positions)
- Financial Affairs Specialist
- Institutional Services Assistant
(Two Open Positions)
- Medical Technologist
- On Demand / Paratransit Services Manager

The University of Arkansas provides one of the
most comprehensive and competitive benefit
packages in the region.

- | | | |
|---------------------|-----------------------------|--|
| • Health Coverage | • Paid Holidays | • Vision |
| • Dental Coverage | • Sick Leave | • Short & Long
Term Disability |
| • Prescription Drug | • Vacation Leave | • Employee
Assistance
Program and
More! |
| • Retirement | • Catastrophic
Leave | |
| • Basic Life | • Family & Medical
Leave | |
| • Optional Life | | |
| • Tuition Reduction | | |



UNIVERSITY OF
ARKANSAS

The University of Arkansas has an in-house temporary employment staffing service called RazorTemps. Apply to this posting if you are interested in being considered for temporary employment opportunities. These positions vary in length and often provide a 'foot in the door' to permanent employment at the University.

The University of Arkansas recognized the challenge of balancing work with personal life, and we pro actively look for ways to help our employees do well at both aspects of their lives. This includes creating health insurance and retirement plans that work well; offering work-time options where possible; promoting career and personal development; and giving paid leave for holidays, illness, vacations, children's educational activities and military duty, among others.

As we strive to represent the best of public higher education, advance Arkansas and build a better world by providing transformational opportunities and skills, promoting an inclusive and diverse culture, nurturing creativity, and solving problems through research and discovery, the University of Arkansas provides excellent opportunities for professional service and that you can be a part of the worthwhile advancement of the University. We believe in fostering a collaborative and innovative culture among our diverse faculty staff and students that promotes a healthy balance.

To apply for above positions, please visit our website at
<https://jobs.uark.edu>

For more information, please contact us at 479.575.5351.

The University of Arkansas is an Equal Opportunity-Affirmative Action Institution.



WestRock
Rogers, AR

WestRock is a leading global packaging company and provider of paper and packaging solutions in global consumer and corrugated markets. We are currently taking applications for:

NEW Pay Rates!

Machine Operators

Starting Pay: \$15.61

Position Pay: \$17.06 - \$20.28

Manufacturing experience preferred but not required, High School Diploma or GED required. Must be available to work any shift assigned (3 shift operation). Must be available for daily and/or weekend overtime as required.

Competitive Benefits including, Medical/Dental/Vision/401K/Employee Stock purchase plan and other offerings available after 60 days of employment.

For more information and to apply go to:

westrock.com

WestRock Company is an Equal Opportunity Employer committed to creating and maintaining a diverse workforce: Minorities/Females/Disabled/Veterans



Washington Co., AR
Is currently taking
applications for:

JUVENILE CARE WORKER

The Juvenile Care Worker, under the guidance and direction of the Staff Development Supervisor, serves the County by efficiently supervising and maintaining discipline, and meeting these needs of the residents in accordance with federal and state law. Work effectively with all divisions and departments within the Regional Juvenile Detention Center, Juvenile Courts, Defenders, Prosecuting Attorneys, law enforcement agencies, other counties and the public. Must meet minimum requirements under state law for Juvenile Detention Standards Training (40 hours of training).

Check out our website for complete job description:

www.co.washington.ar.us

All employees are hired through the
Washington County
Human Resources Department
280 North College, Suite 510
Fayetteville, AR 72701
479.973.8465

Applications accepted weekdays between 8 am and 4 pm
Females and minorities encouraged to apply. EOE



CRH is the leading local distributor for products such as rock and asphalt as well as a road construction company. Many of our positions are designed to train you on the job with little to no experience required. APAC, Standard Materials and Arkholo are part of the CRH family.

APAC/SMG - Arkansas Openings for Northwest Arkansas

For more information contact Erica Betancourt at: (479) 587-3339. Se Habla Español

- Concrete Foreman
- Concrete Plant Operator
- CSR/Dispatch for Ready Mix
- Experienced Heavy Equipment Op.
- Experienced Paving Laborers
- Loader Operator
- Lowboy Truck Driver
- Paving Operators
- Quarry Equipment Operator Night/Day Shifts
- Ready Mix Driver

Arkholo Openings for Springdale & Fort Smith, Arkansas

For more information contact Marsha Hayes at: (479) 788-6365.

- Ready Mixer Drivers
- Applicants must have:***
 - Good Driving Record. Valid CDL with proper endorsement.
 - Must be able to pass a DOT Physical with a drug screen.

APAC Openings for Muskogee, Oklahoma

For more information contact Marsha Hayes at: (479) 788-6365.

- Asphalt Superintendent
- Construction Laborer
- Construction Heavy Equipment Operator

APAC Oklahoma Openings for Tulsa, Oklahoma

For more information contact Lisa Chapman at: (918) 556-2236.

- Asphalt Loader Operator
- Asphalt Plant Mechanic
- CDL A Dump Truck Driver
- Facilities Maintenance
- Quarry Maintenance

SMG - Oklahoma Openings for Tulsa, Oklahoma

For more information contact Lisa Chapman at: (918) 556-2236.

- Plant Operator- Vinita, OK and Claremore, OK
- Ready Mix Drivers
- Transportation Operations Manager

You may apply online for any of the above positions and see more listings at:

<https://www.crhamericas.com>

Competitive Wages, Benefits and Excellent Safety Culture!

APAC Central Inc. is an Affirmative Action and Equal Opportunity Employer

GOODWILL JOB CONNECTION

Check Out the New Job Board:
goodwilltulsa.org/gwt/Job_Board.asp

- Actively hiring companies in all industries
- Thousands of currently available positions
- Application links directly to those opportunities
- Companies and positions added daily
- Search by Job Title, Company or Category

GOODWILL JOB CONNECTION Centers are OPEN.

Friendly staff available to assist with your job search.
Safety protocols in place to assure a safe working environment.
Job search and resume guidance, referral to community resources, and additional assistance available onsite and by phone, email, voicemail, fax, and online.

Goodwill Job Connection - Tulsa West
918-599-0067 - Fax: 918-599-0094
Clarice Floyd - cfloyd@goodwilltulsa.org
Diane Nash - dnash@goodwilltulsa.org

Goodwill Job Connection - Tulsa Midtown
918-747-1334 - Fax: 918-747-1500
Stacey Cole - scole@goodwilltulsa.org
Indira Artigas* - iartigas@goodwilltulsa.org
**Bilingual assistance available (English/Spanish)*

TulsaWORKS Career Academy
goodwilltulsa.org/gwt/TulsaWorks3.asp
918-584-7291 - Fax: 918-583-3219

Goodwill Hiring Events Page
goodwilltulsa.org/gwt/Hiring_Events.asp



Unete al Equipo!

Nuevo

\$15/hr

Salario Inicial

Planta Berry Street



Para las líneas de Cono y La Carne Oscura
Las líneas de Cono pueden hacer hasta \$16/hora depende de la posición
La Carne Oscura pueden ganar \$4.50/hora adicional con metas incentivadas

Aplique en línea: www.tysonfoodscareers.com

O llame al 479-750-5316

Posiciones adicionales:

Industrial Maintenance, Jack Driver, Production Lead, Live Hanger, Machine Operator, Automation Technician, FSQA Tech, Forklift Driver y Internship (pago varía para estas posiciones)

Feria de Empleo

Bryan University
3704 W. Walnut St.
Rogers, AR 72756

27 de Abril | 11 am - 2 pm

Tyson es un Empleador con Igualdad de Oportunidades que practica Acción Afirmativa. Todos los aspirantes calificados se tomarán en cuenta sin hacer distinción alguna hacia la raza, origen nacional, color, religión, edad, genética, sexo, orientación sexual, identidad de género, incapacidad o estado de veterano.

LA Z BOY®

Are You Ready to

¿Estás Listo Para

BUILD SOMETHING AMAZING?

CONSTRUIR COSAS MARAVILLOSAS?

Immediate Production Openings
Contratando: Oportunidad Laboral inmediata

BUILD YOUR CAREER HERE

Construye tu carrera aquí

- Incentive Team Pay
- Comfortable Working Environment
- Great Benefits Package



ON SITE INTERVIEWS:

Entrevistas en el Lugar
2601 N. Country Club Rd
Siloam Springs, AR
479-215-4336

Aumento de salario base por los primeros 90 días

Base Pay BOOST

(first 90 days)

Apply/Aplicar: <https://jobs.jobvite.com/la-z-boy>

EOE/Drug Free Work Place Employer



workatsimmons.com

Current Openings

Prepared Foods

Gentry, AR
Southwest City, MO
Van Buren, AR

Day & Night Shifts

Production
Maintenance

Prepared Foods

Gentry, AR

New Shift:

Monday - Thursday
4 pm to 3 am
1 hr Break Each Day

Animal Nutrition

Siloam Springs, AR
Southwest City, MO

Day & Night Shifts

Production
Operators
Maintenance

Hiring Bonus for ALL LOCATIONS!

+\$0.50/hr for Night Shift

Pet Food

Decatur, AR

Day Shift

Production
Operators



Part-Time Opportunities Available

\$14/hr

Multiple shifts, including Saturday only

Better Basic Benefits:



Build Your Paycheck

Competitive Pay
Referral Bonuses
First 6 Months = Vacation Pay



Simmons Care Clinics

High-Quality Healthcare
Team Members & Families
Free Generic Prescriptions



Education Financial Aid

Support For GED to PhD,
On-The-Job Training
Professional Development

Apply Online or In Person Same-Day Hiring

NWA Hiring Center

2998 Hwy 412 East, Ste 80
Siloam Springs, AR 72761
(844) 400-8357 Option 3

SWC Hiring Center

10700 S. State Hwy 43
Southwest City, MO 64863
(417) 762-3271 Option 3

Fort Smith Hiring Center

4900 Rogers Ave., Suite 103 D
Fort Smith, AR 72903
(479) 262-5390

See enhanced safety measures here simmonsfoods.com/covid19-measures

EEO



McKee Foods Corporation, manufacturer of America's # 1 snack cakes, **Little Debbie® snack cakes**, located in Gentry, AR, is taking applications for a:

Long Haul Driver

- Experienced OTR driver with at least 100,000 verifiable miles
- At least two years OTR experience
- Safe driving record
- Current Class A CDL
- Current DOT physical
- At least 23 years old
- Willing to drive team
- Don't mind a physically demanding job

We Offer:

- Competitive pay scale
- Excellent benefits, including medical, dental, 401(k), profit-sharing and fitness center
- A work environment that is clean, safe and tobacco-free
- Promotion opportunities for high performers



Apply on-line at:

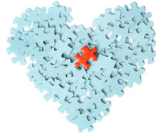
mckeefoods.com

Equal Opportunity Employer M/F/V/D

If you have a love for helping others, We want to talk with you!

In-Home Personal Care Assistants

- Earn **\$11.00** per hour
- Earn bonuses
- Have paid holidays
- Work up to **40 hours per week**
- Have a flexible part-time work schedule
- Participate in voluntary benefits programs - Including participation in 403(b) retirement plans.
- This is a Safety-Sensitive job for purposes of the AR M.M.A.



Now Offering ONLINE Training!



We provide **FREE 40-hour Personal Care Training ONLINE!** Check our website for more information.



Apply on-line:

aanwar.org/Employment

EEO | Employer/AA/M/F/Vet/Disabled

Employment subject to background check and drug screening.



Circle of Life seeking experienced, compassionate candidates to join our TEAM!

- Admissions RN (PT)
- Admissions RN PRN
- Clinical Administrative Assistant
- Clinical Administrative Specialist
- Clinical Educator
- Clinical Inpatient Manager
- CNA Inpatient (PRN)
- Night Call Nurse (PRN)
- Staff RNs (PRN)
- Unit Administrative Assistant (PRN)
- Weekday Intake RN
- Weekend RN



Apply online at www.nwacircleoflife.org

Contact Human Resources at
479-872-3366 or 479-872-3397

Earlene Howard Hospice Home
901 Jones Road | Springdale, AR 72762

Marie & John Carr Hospice Home
1201 NE Legacy Parkway | Bentonville, AR 72712

Drug Free Workplace

Equal Opportunity Employer

Are you a compassionate person, who loves helping others? We are looking for YOU!

Compassionate Caregivers needed to work in the NW AR Region!

\$11 - \$15 per hr. Depending on assignment
No Experience Required Paid Training Provided!!

- Flexible Schedules & Locations
- Incentive time off
- Competitive wages
- Caregiver referral bonuses
- 401k/Health/Dental/Vision Insurance
- Unique Assignments
- Specialized training
- Direct Deposit

Retired & newly graduated healthcare professions, RNs, PCAs and CNAs encouraged to apply!

WALK-IN WEDNESDAY! APPLY IN PERSON AND INTERVIEW ON THE SPOT!

Apply in person:

3190 Bella Vista Way
Bella Vista, AR 72714
Contact us @ 479-855-6000
for more information



rah-ar.com



CHRISTIAN WOMEN'S JOB CORPS
a ministry of WNU

No-Cost Training in Life and Job Skills for Women

Job Skills Training:

- Basic computer classes in Microsoft Word, Excel and Outlook
- Resume Writing
- Interviewing tips
- Job searching on the internet; etc.

Life Skills Training:

- Budgeting
- Goal setting
- Personality traits
- Character development; etc.

ACCEPTING APPLICATIONS NOW!

Frisco Station Mall
100 N. Dixieland, Suite D-8, Rogers, AR
Call 479.899.6511
cwjcna@gmail.com

Full Time & Part Time Assignments



Highest Pay in the Area!

RNs, LPNs, CNAs & Home Care Aides

Great Pay and Benefits:

- Pay Advances • Direct Deposit • Uniform Discounts
- Flexible Schedules • Health Insurance and much more!



Apply online 24/7 at www.prnmedstaff.net

Or Apply In Person:

4400 S. Thompson St., Springdale, AR
479.756.8701

Providing opportunities for the Best Employees Since 1990!



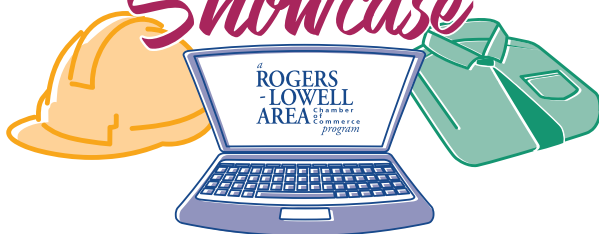
Affiliate of the Society of Human Resource Management (SHRM)
Membership benefits include:

- Monthly Webinars featuring top local and national speakers
- Learning labs | Seminars | Virtual Networking events And More!

info@noark.org | 479-305-2466

Online Jobs Event Returning | April 1 - 30, 2021

Northwest Arkansas EMPLOYMENT Showcase



Presented by **CAREERS** NW AR

Registration is now open for the NWA Employment Showcase, a revamped event replacing this year's 2021 NWA Spring Job Fair. The new format improves upon the existing job fair format by taking it online and showcasing available jobs and careers in our region for the entire month of April.

Hosted at RogersLowell.com, participating businesses can submit a custom video describing available positions, company culture, ideal candidates, and other relevant information, or post a pre-recorded zoom interview about the positions with Chamber staff for a small fee. The webpage will also provide links directly to available job postings for quick and easy access for job seekers. Job seekers will be able to learn about dozens of career opportunities and unique companies in our area all on one easy to navigate webpage. There is no limit to the number of positions a business can list.

Northwest Arkansas Employment Showcase's Webspaces will feature:

Introduction Video (up to 60 seconds) for participating companies

A quick blurb about the company's work culture, types of jobs available, or other supporting information for job-seekers

Either a link to the company's job listings on their website, or direct link to application website such as indeed.org or linkedin.com

Don't miss out on the NWA Employment Showcase beginning April 1, 2021. Registration now open. Contact memberservices@rogerslowell.com or call (479) 636-1240 now to explore sponsorship opportunities.

Break into the retail industry as a Certified Retail Analyst

As a Certified Retail Analyst (CRA) student at NorthWest Arkansas Community College, you will:

- » Improve analytical skills to advance in your career.
- » Gain day-in-the-life analyst experience.
- » Qualify for entry-level work in the supplier community.

To date, 87% of CRA graduates report finding employment while in the program or within one year.

Registration begins April 5, 2021

Summer semester begins
May 10, 2021

Learn more:
www.nwacc.edu/CRA



WORKFORCE &
ECONOMIC DEVELOPMENT



For 29 years, Petra Allied Health has kept its tuition low and its classes focused solely on preparing students for entry level healthcare positions.

Classes We Offer

Medical Assistant

Dental Assistant

Nursing Assistant

Electrocardiograph
Technician

Phlebotomy Technician

Limited Licensed
Radiologic Technologist

Medical Billing & Coding

Optometric Assistant

Pharmacy Technician

Veterinary Assistant

PetraAlliedHealth.com | 479-750-9876

Licensed by Arkansas Division of Higher Education

NWACC Adult Education Offers

Online instruction available.

- ▶ High School Equivalency (GED®)
- ▶ College Prep for Math
- ▶ College Prep for Literacy
- ▶ English as a Second Language (ESL)
- ▶ Citizenship Classes
- ▶ Career Education



NWACC ADULT EDUCATION

NORTHWEST ARKANSAS
COMMUNITY COLLEGE

Shewmaker Center for Workforce Technologies
1000 S.E. Eagle Way, Bentonville, AR 72712

NWACC Adult Education provides equal access to all programs and activities. Must be 18 years or older to participate. Paid for with funds from the Arkansas Department of Career Education, Adult Education Division.

nwacc.edu | 479.986.6911

Lindsey Management Co., Inc. provides management services to the multifamily apartment properties listed. Thinking about a new career; property management may be a good field to consider.



We are currently hiring assistant managers, leasing consultants & maintenance techs at various properties. These positions are key to the successful management of apartment properties and are positions that can lead to management. Please visit our website. EOE

www.LindseyMgmt.com

Go to Career Opportunities > Apartment Employment > Apply Now. 



ARKANSAS - NORTHWEST ARKANSAS

FAYETTEVILLE	
Appleby	479.443.9258
Chestnut II	479.521.6895
The Cliffs I	479.582.2540
The Cliffs II	479.444.0400
Cornerstone I/II	479.443.3507
Crafton Place/Starrfire	479.521.6895
Crossover Terrace	479.443.9744
East Oaks/Oakshire I/II	479.443.7278
Fair Park	479.587.9395
The Greens at Lakeside Village	479.442.7663
Lakeside Village	479.443.9022
The Links at Fayetteville	479.966.4340
The Greens at Fayetteville	479.966.4340
The Fairways at Fayetteville	479.966.4340
Markham Hill	479.443.9333
Paradise View	479.521.8299
The Park I/II	479.443.9804
Shiloh	479.442.4384
Southern View I/II	479.443.6698
Stearns Street/Vantage Center	479.527.9851
Valley Lake	479.444.9744
SPRINGDALE	
Bridgestone	479.751.8866
Eastwood	479.927.0676
Johnson Meadows	479.756.1312
The Links at Springdale I/II	479.750.1515
Station	479.756.1312
Sunset I/II/Holcomb	479.750.3030
Walnut Tree	479.751.8866
West End Place/Pleasant Point	479.750.3030
LOWELL	
The Links at Lowell	479.770.2100
ROGERS	
Brentwood I/II	479.631.5800
Briarwood	479.631.5800
Doubletree I/II	479.631.5800
Edgewood	479.631.5800
The Fairways at Lost Springs	479.621.0277
The Greens at Lost Springs	479.631.6515
The Greens on Blossom Way	479.631.2024
Lost Springs	479.621.9399
Turtle Creek I/II/Park	479.631.1444
BENTONVILLE	
Copperstone I/II	479.271.9300
Delmar	479.273.5283
The Links at Bentonville	479.271.0205
The Links at Rainbow Curve	479.657.6446
The Trails at Bentonville	479.657.6633
Moberly Manor I/II	479.273.2540
Moberly Place	479.273.3533
Walton Crossing	479.268.4237
SILVAM SPRINGS	
Spring Valley I/II	479.549.3213

ARKANSAS—REST OF STATE

BENTON	
Dogwood Lakes	501.794.3000
Fountain Lakes	501.778.3134
The Greens at Longhills	501.860.6968
BRYANT	
The Fairways at Hurricane Creek	501.847.7747
The Greens at Hurricane Creek	501.847.2586
The Lakes at Hurricane Creek	501.847.6178
CONWAY	
Centennial Valley I/II	501.513.2555
The Fairways at Nutters Chapel	501.205.8230
Fox Run	501.327.8739
Germantown	501.329.0767
The Greens at Nutters Chapel	501.450.7056
Lake Pointe	501.336.0900
The Links at Cadron Valley	501.513.0000
Salem Park	501.329.5900
Westlake	501.513.9392
FORT SMITH	
The Links at Fort Smith	479.648.8080
Pike Place	479.782.6686
HARRISON	
The Links at Harrison	870.365.3620
JONESBORO	
Gladiola Estates/Gladiola Manor	870.933.8333
The Greens at Jonesboro	870.275.6525
The Links at Jonesboro	870.275.6525
Park Lake	870.933.8333
LITTLE ROCK	
The Links at Eagle Hill	501.407.9088
Eagle Hill	501.455.8818
Eagle Nest	501.407.0567
Westwood I/II	501.455.8862
NORTH LITTLE ROCK	
The Greens at the Rock	501.753.1200
The Links at the Rock	501.812.5020
MARION	
The Fairways at Marion I/II/III	870.739.4949
The Greens at Marion I/II	870.739.6300
PARAGOULD	
Silverwood	870.239.3815
RUSSELLVILLE	
Shadow Lake	479.967.5584
Spring Lake I/II	479.858.7079
SEARCY	
Meadow Lake I/II	501.268.3355
SHERWOOD	
The Links at Sherwood	501.833.8010
TEXARKANA	
The Links at Texarkana	870.773.2295
ALABAMA	
TUSCALOOSA	
The Greens at Tuscaloosa I/II	205.342.3339
The Links at Tuscaloosa	205.247.9978
AUBURN	
The Greens at Auburn	334.821.4061
The Fairways at Auburn I/II	334.209.1850

KANSAS

DERBY	
The Greens at Derby I/II	316.788.3060
The Fairways at Derby	316.788.1028
The Links at Kansas	785.841.3868
The Links at Manhattan	785.539.8448
SHAWNEE	
The Greens at Shawnee	913.422.8295
MISSISSIPPI	
OXFORD	
The Links at Oxford	662.513.4949
CANTON	
The Greens of Madison County	601.391.3464
The Links of Madison County	601.859.5551
The Trails at Madison County	601.436.4707
STARKVILLE	
The Links at Starkville	662.338.1801
MISSOURI	
JOPLIN	
Tanglewood	417.623.3336
SPRINGFIELD	
The Greens at Springfield	417.833.3261
GRANDVIEW	
Grand Summit Apartments	816.331.3968
The Fairways at Grand Summit I/II	816.425.4059
COLUMBIA	
The Links at Columbia	573.474.4399
OKLAHOMA	
BIXBY Tulsa suburb	
The Links on Memorial I/II	918.369.6055
BROKEN ARROW Tulsa suburb	
The Greens at Broken Arrow I/II	918.355.0802
The Greens at Broken Arrow III	918.355.0802
The Greens on Aspen	918.872.8899
CLAREMORE	
Deer Run	918.343.7326
OWASSO	
The Greens at Owasso I/II	918.274.4800
The Greens at Owasso III/IV	918.376.4244
STILLWATER	
The Links at Stillwater	405.372.9910
The Greens at Stillwater	405.372.9910
OKLAHOMA CITY	
The Greens at Lake Overholser	405.494.9888
The Greens at Oklahoma City	405.602.5208
The Links at Oklahoma City	405.936.9211
The Trails at Rockwell	405.604.3583
NORMAN OKC	
The Links at Norman	405.321.3430
The Greens at Norman	405.321.3430
EDMOND OKC	
The Greens at Coffee Creek	405.216.3642
MOORE OKC	
The Greens at Moore	405.794.0062
The Fairways at Moore	405.895.6127
YUKON OKC	
The Links at Mustang Creek	405.577.5151
The Greens at Mustang Creek	405.577.5151

BE A PART OF THE SHOW!

Walmart AMP Job Fair
APRIL 24, 10AM-3PM

**Learn about employment opportunities
for the upcoming season and beyond!**

Job openings in the following areas:

Food and Beverage

Bartender, Cocktail Server, Beer Pourer and Bar Back

Front of House

Usher and Ticket Taker

Local Crew

Facilities

Concessions

Sous Chef, Culinary Attendants, Kitchen Utility and Dishwashers

When you arrive, please park in the North lot and follow signage to the entry gate.

Masks required!



Arkansas Music Pavilion

5079 W. Northgate Road | Rogers, AR 72758

479.443.5600 | [amptickets.com](https://www.amptickets.com)