

JOB GUIDE

Jobs in Northwest Arkansas • Southwest Missouri • Tulsa Metro

WE'RE HIRING

Industrial Maintenance

1st, 2nd and 3rd Shift | \$1.50/hr shift differential for working evening/night shift

Production, Cone Line, Portioning & Dark Meat

1st and 2nd Shift

Pac-Mac Bagger and Ishida Scale Operator

1st and 2nd Shift | \$20+ DOE

Pac-Mac Bagger and Ishida Scale Maintenance Tech

1st and 2nd Shift | \$28+ DOE

Orientations Daily! Sign on bonus up to **\$2000** over first **6 months** of employment for newly hired employee's. Excellent pay rates up to **\$21.50/hr!** | Relocation Assistance Available **Paid Weekly** | **Company provided lunches**



Exceptional Quality, Exceeding Expectations

Apply at: southeastpoultry.com

**Or pick up an application at:
2200 Town West Dr. | Rogers, AR 72756**

Se Habla Espanol | EOE

Issue

Volume 33 Issue 10
May 14 - May 27, 2021

Advertise

thejobguide.com
800-654-9776

Free

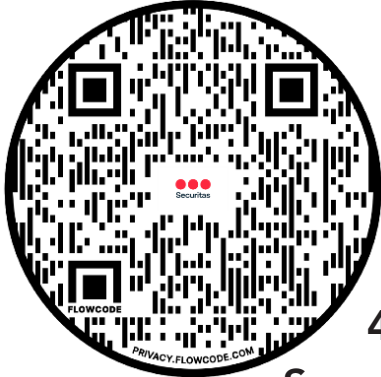
Established 1988



Securitas Now Hiring

SECURITY OFFICERS

Full & Part-Time



Scan
Here to
Apply



479-659-5071

SecuritasJobs.com

Securitas Security Services USA is an Equal Opportunity Employer

Regulated by: Dept of AR State Police, 1 State Police Plaza Dr, Little Rock AR 72209, 501-618-8600 CMPY.0001241



NOW HIRING! Springdale Public Schools

is now accepting applications for
Part-Time and/or Full-Time



BUS DRIVERS

- 8 paid holidays
- Teacher Retirement benefits available for full-time employees.
- Other duties may be available with additional pay.
- *Paid Training is available.*

**Beginning Drivers starting pay \$71.47 per day
(w/no exp.)**

*Refer to transportation salary schedule online for
complete pay scale*

Apply in person at 1612 E. Emma Ave, Springdale, AR 72764

Or applications are available online:

apply.sdale.org

Click the Apply Now tab - Bus Driver Position

Or call Trisha Labit for more info @ 479-750-8830

JOB GUIDE

Notice to our Advertisers and Readers:

Job Guide is not responsible for ad contents, products or services offered. **Job Guide** reserves the right to reject advertising it deems unsuitable and liability does not exceed the cost of the advertisement placed. Any reproductions of the contents of this publication without the written consent of the Publisher is strictly prohibited.

Printing

Stigler Printing

Distribution

Job Guide
Arkansas Rack Program
Distributech

P.O. Box 813

Rogers, AR. 72757

Phone: 800-654-9776

Fax: 888-232-7659

www.TheJobGuide.com



@thejobguide88



@thejobguide88



/company/the-job-guide

CEO | Publisher
Sunny Martinez



Unete al Equipo!

Nuevo

\$15/hora Salario Inicial



Planta Berry Street

Para las lineas de Cono y La Carne Oscura

Las lineas de Cono pueden hacer hasta \$16/hora depende de la posicion
La Carne Oscura puden ganar \$4.50/hora adicional con metas incentivadas

Aplique en linea: www.tysonfoodscareers.com

O llame al 479-750-5316

Posiciones adicionales:

Industrial Maintenance, Jack Driver, Production Lead, Live Hanger, Machine Operator, Automation Technician, FSQA Tech, Forklift Driver y Internship
(pago varia para estas posiciones)

Feria de Empleo 18 de Mayo | 9 am a 3 pm

Planta Berry Street

600 N Berry St | Springdale AR 72762

Tyson es un Empleador con Igualdad de Oportunidades que practica Accion Afirmativa. Todos los aspirantes calificados se tomaran en cuenta sin hacer distincion alguna hacia la raza, origen nacional, color, religion, edad, genetica, sexo, orientacion sexual, identidad de genero, incapacidad o estado de veterano.

NOW HIRING

Careers:

- CMC Machine Operators
- Forge Operators
- Electricians
- Tool Room Machinists

Benefits:

- Health Dental & Vision Insurance
- Paid vacation & holidays
- Merit Raises
- 401 (K) - Profit sharing
- Tuition reimbursement
- Attendance bonus
- Referral bonus
- Relocation compensation

Must Have:

- Strong work ethic
- Great attitude
- Dependable
- Willing to learn new skills

Apply in Person:

Brunner & Lay Inc
1510 N Old Missouri Rd
Springdale AR 72765
Phone (479) 756-0880



WE ARE HIRING

Join our team in Bentonville, AR!

We are hiring for several positions in Embroidery and Warehouse.

These are Full Time Regular positions that are eligible for benefits after 60 days of employment. *Eligible for monthly production bonuses!* All applicants must pass background check and drug screen.



For full job descriptions and to apply, please visit:
www.outdoorcap.com/careers

Outdoor Cap is an equal opportunity employer.

Brunner & Lay

Mining & Construction Tools

Family owned and American made since 1882



www.brunnerlay.com

Be apart of an amazing company that is known for custom building and creative problem solving in their field!



JOIN THE MID-SOUTH STEAM BOILER TEAM! IMMEDIATE OPENINGS FOR:

BOILER TECHNICIAN APPRENTICE

- Basic Electrical & Mechanical Background
- Troubleshooting Mechanical and Basic Electrical Systems
- Understand electrical schematics
- Travel Required

SKILLED WELDERS

We are searching for **Skilled Code Welders** to be responsible for fabricating and welding pressure vessels and related components in accordance to ASME code. Certified Welders perform difficult and unusual welding operations on a wide range of metals and alloys for complex products.

- Set voltage for proper penetration and fusion of metals
- Select electrode type and size
- Ability to distinguish between metals to determine how to fuse dissimilar metals
- Obtain maximum weld strength to avoid distortion and adherence to ASME code
- Interpret complex blueprints and schematics to build systems and products to company and customer standards

EMPLOYMENT REQUIREMENTS

- Clean driving record, that means no moving violations, DUI's
- Pay based on position/ experience
- Stable Work History
- Must be at least 21
- Criminal background checks and drug screens performed on all potential employees

BENEFITS

- Medical/Dental - Blue Cross/ Blue Shield of AR | AFLAC
- Kansas City Life | New York Life
- Section 125 Cafeteria Plan
- 401(k)VSP
- Direct Deposit
- Safety Shoes-Eligible after 1 year of continuous employment

3 WAYS TO APPLY: EMAIL | FAX | ONLINE

- Email Resume: Resume with references to jobs@midsouthboiler.com
- Fax: (479) 262-6446

midsouthboiler.com

WE'RE HIRING
JOIN OUR TEAM

Day Shift & Night Shift Production Positions

NEW Pay Rates starting at \$14.90 up to \$15.40!
\$1.00 Pay Increase after 90 days!
\$1.00 Shift Premium!

BONUS

Retention Bonus Earning Potential up to **\$1,000** & Referral Bonus Earning Potential

BUTTERBALL

Apply online today at:

careers.butterball.com

Don't have a computer at home?

Apply onsite: Mon.- Fri., 9 a.m.-4 p.m.

1294 N. College Street, Huntsville, AR | 479-738-2151

Butterball, LLC is an Equal Opportunity/Affirmative Action Employer and does not discriminate against applicants for employment based on their race, sex, color, religion, national origin, genetic information, sexual orientation, gender identity, marital status, disability, or veteran status.

cwjc
CHRISTIAN WOMEN'S JOB CORPS
a ministry of WMU

No-Cost Training in Life and Job Skills for Women

Job Skills Training:

- Basic computer classes in Microsoft Word, Excel and Outlook
- Resume Writing
- Interviewing tips
- Job searching on the internet; etc.

Life Skills Training:

- Budgeting
- Goal setting
- Personality traits
- Character development; etc.

ACCEPTING APPLICATIONS NOW!

Frisco Station Mall
100 N. Dixieland, Suite D-8, Rogers, AR
Call 479.899.6511
cwjcna@gmail.com

Want a job where you can use your skills to earn a good living? Need help getting your foot in the door at a great employer?



Northwest Arkansas



Full Time Jobs!
Majority permanent hires after a probationary period.
Weekly Pay!

- **Machine Operators**
1st & 2nd shift | SE Fayetteville
\$14.25-\$15.25/hr + OT
- **Dump Truck Drivers NWA**
\$18-19/hr | Class A or B required
- **Heavy Haul Driver Class A**
\$21-\$25/hr DOE
- **Warehouse Positions**
(Multiple Companies) | \$12-13/hr
Rogers and Springdale
- **Semi Skilled Construction Work**
\$13-\$16/hr | NWA

Si Habla Español

Call for an Appointment TODAY!
Rogers Office: 479-899-6403
Springdale Office: 479-717-6556



@ LaborMaxStaffingRogers
@ labormaxspringdale

EOE

When you call for an appointment:
Say you saw this ad in the Job Guide,
Come in to apply and get a free gift!

Ozark Regional Transit

Full Time Drivers Needed

New pay rate! \$12.50/hr
Paid Training available

Women & Minorities encouraged to apply

Excellent Benefits:

Health, Vision, Dental, Paid Vacations,
457(b) retirement with employer match

Apply online only: www.ozark.org

For more information call Human Resources:
479-361-8752 or email: gdelancey@ozark.org
2423 E Robinson, Springdale, AR



Pre-employment physical, drug test and background check.
An Equal Employment Opportunity Employer



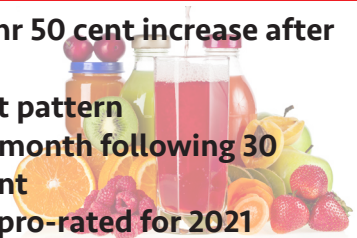
Lassonde

LASSONDE PAPPAS
AND COMPANY, INC.

A world leader in the production of fruit juice and related products, Now Hiring in ALL DEPARTMENTS in our Springdale, AR facility:

Production/Batching/Warehouse

- Starting Pay: \$15/hr 50 cent increase after 90 days
- 6pm-6am 3~4 shift pattern
- Benefits 1st of the month following 30 days of employment
- Vacation and PTO pro-rated for 2021



NOW OFFERING: \$1000 SIGN ON BONUS
THROUGH 07/31/2021!

Apply online:
lassondepappas.com

EEO/AAP

Cargill now hiring for the following position:

Offal Operators Floater

Cargill Offers:

- Competitive Wages & Weekly Bonus Programs
- Overtime available
- Paid vacation and holidays
- Full Benefit package including medical, dental, vision and 401K

BONUS

\$1,500

Sign-On Bonus!

Starting Rate: \$18.00+ Weekly bonuses

Apply online:
www.cargill.com/springdale

JOIN
OUR
TEAM

Cargill is an Equal Opportunity Employer, including Disability/Vet. Drug Free Employer

Northwest Arkansas

EMPLOYMENT Showcase

Presented by **CAREERS** NW AR

Today Through May 31

The NWA Employment Showcase is a revamped event replacing this year's 2021 NWA Spring Job Fair. The new format improves upon the existing job fair format by taking it online and showcasing available jobs and careers in our region for both the month of April and month of May.

Job seekers will be able to learn about dozens of career opportunities and unique companies in our area all on one easy to navigate webpage. Hosted at RogersLowell.com, participating businesses can submit a description of available positions, company culture, ideal candidates, and other relevant information. The webpage will also provide links directly to available job postings for quick and easy access for job seekers. There is no limit to the number of positions a business can list.

Don't miss out on the NWA Employment Showcase. Contact Jeff O'Neill at Jeff@RogersLowell.com today to submit your complimentary job postings.

The University of Arkansas, Fayetteville offers employment opportunities in the fields of:

Maintenance ▪ Custodial ▪ Computer Technical ▪ Clerical

Current Opportunities Include:

- Athletic Facility Supervisor (Three Open Positions)
- Carpenter Shop Foreman
- Coordinator of Housekeeping
- Heavy Equipment Operator
- HEI Program Coordinator
- Human Resources Recruiter
- HVAC Mechanic (Two Open Positions)
- Institutional Services Assistant (Two Open Positions)
- Mail Services Coordinator
- Maintenance Worker
- Painter
- Parking Control Officer (Three Open Positions)
- Program Coordinator
- Public Safety Officer (Two Open Positions)
- Recruitment/Payroll Specialist (Hot Springs location)
- Recruitment Analyst
- Telecommunications Specialist (Two Open Positions)
- Travel Support Specialist
- Veterans Affairs School Certifying Official

The University of Arkansas provides one of the most comprehensive and competitive benefit packages in the region.

• Health Coverage	• Paid Holidays	• Vision
• Dental Coverage	• Sick Leave	• Short & Long Term Disability
• Prescription Drug	• Vacation Leave	• Employee Assistance
• Retirement	• Catastrophic Leave	• Family & Medical Leave
• Basic Life	• Family & Medical Leave	• More!
• Optional Life		
• Tuition Reduction		

UNIVERSITY OF ARKANSAS

The University of Arkansas has an in-house temporary employment staffing service called RazorTemps. Apply to this posting if you are interested in being considered for temporary employment opportunities. These positions vary in length and often provide a 'foot in the door' to permanent employment at the University.

The University of Arkansas recognized the challenge of balancing work with personal life, and we pro actively look for ways to help our employees do well at both aspects of their lives. This includes creating health insurance and retirement plans that work well; offering work-time options where possible; promoting career and personal development; and giving paid leave for holidays, illness, vacations, children's educational activities and military duty, among others.

As we strive to represent the best of public higher education, advance Arkansas and build a better world by providing transformational opportunities and skills, promoting an inclusive and diverse culture, nurturing creativity, and solving problems through research and discovery, the University of Arkansas provides excellent opportunities for professional service and that you can be a part of the worthwhile advancement of the University. We believe in fostering a collaborative and innovative culture among our diverse faculty staff and students that promotes a healthy balance.

To apply for above positions, please visit our website at <https://jobs.uark.edu>

For more information, please contact us at 479.575.5351.

The University of Arkansas is an Equal Opportunity-Affirmative Action Institution.



Accepting Applications:

Machine Operators
Equipment Operators
Maintenance Tech
Quality Techs
General Labor

- We Offer:**
- 3 1/2 Day Work Week
 - Competitive Wages & Benefits
 - Bonus Earning Potential
 - Day and Night Openings
 - Advancement Opportunities

Apply online today at:

<https://jobs.crh.com>

Search **“MoistureShield”**

Apply onsite:

Monday – Friday 9 a.m – 4 p.m
801 N. Jefferson St.
Springdale, AR 72764
479-750-1299

¡Únete al Equipo de MoistureShield!

Aceptando Aplicaciones:

Operadores de Maquina
Operadores de Equipo Industrial
Mecánicos
Control de Calidad
Producción General

Ofrecemos:

- Semana de 3 días y medio
- Pago y Beneficios Competitivos
- Potencial de Bonos
- Posiciones de Día y Noche
- Oportunidades de Crecimiento

Aplice en línea en:

<https://jobs.crh.com>

Busque **“MoistureShield”**

Aplice en Persona:

Lunes – Viernes 9 a.m – 4 p.m
801 N. Jefferson St.
Springdale, AR 72764
479-750-1299

Equal Opportunity Employer and Drug Free Workplace



Circle of Life seeking experienced, compassionate candidates to join our TEAM!

- Admissions RN (PT)
- Admissions RN PRN
- Billing Specialist
- CNA Inpatient (PRN & FT)
- CNA Outpatient (FT)
- Cook
- Housekeeper
- Night Call Nurse (PRN)
- Staff RNs (PRN)
- Unit Administrative Assistant (PRN)
- Weekend RN



Apply online at www.nwacircleoflife.org

Contact Human Resources at
479-872-3366 or 479-872-3397

Earlene Howard Hospice Home
 901 Jones Road | Springdale, AR 72762

Marie & John Carr Hospice Home
 1201 NE Legacy Parkway | Bentonville, AR 72712
 Drug Free Workplace Equal Opportunity Employer



Washington Co., AR
Is currently taking applications for:

JUVENILE CARE WORKER

The Juvenile Care Worker, under the guidance and direction of the Staff Development Supervisor, serves the County by efficiently supervising and maintaining discipline, and meeting these needs of the residents in accordance with federal and state law. Work effectively with all divisions and departments within the Regional Juvenile Detention Center, Juvenile Courts, Defenders, Prosecuting Attorneys, law enforcement agencies, other counties and the public. Must meet minimum requirements under state law for Juvenile Detention Standards Training (40 hours of training).

Check out our website for complete job description:
www.co.washington.ar.us

All employees are hired through the
Washington County
Human Resources Department
280 North College, Suite 510
Fayetteville, AR 72701
479.973.8465

Applications accepted weekdays between 8 am and 4 pm
Females and minorities encouraged to apply. EOE



SENIORS Helping SENIORS®
The Power of Love®

Part-Time positions for Seniors.

Hiring **SENIORS** to help other **SENIORS** with nonmedical needs such as transportation, companionship, light housekeeping, personal care, etc.

Join Our Team TODAY!

Email: suzanne@seniorcarenwa.com
479-464-4357 | www.seniorcareNWA.COM

Each Senior Helping Seniors Office is Independently Owned and Operated E.O.E.



McKee Foods Corporation, manufacturer of America's # 1 snack cakes, **Little Debbie brand snack cakes**, located in Gentry, AR, is taking applications for a:

Plant Nurse

Full-time position available
3rd Shift
Saturday-Monday; 10 pm - 10 am

- Must be licensed to practice in Arkansas as LPN or RN and CPR certified
- Working as liaison with the safety department
- Administering drug/alcohol tests as necessary
- Conducting pre-employment physicals and drug screens
- Coordinating and participating in various health and wellness programs
- Securing medical files and maintaining HIPAA compliance
- Providing first aid treatment
- Workers' Compensation case management

We Offer:

- Competitive pay scale
- Excellent benefits, including medical, dental, 401 (k), profit-sharing and fitness center
- A work environment that is clean, safe, drug free and tobacco-free

Apply on-line at:
mckeefoods.com

Equal Opportunity Employer

Baseball Cards
Football Cards
Basketball Cards



Check out our selection at:
martinezsportscards.com

Social @
[martinezsportscards](https://www.facebook.com/martinezsportscards)




Are you a compassionate person, who loves helping others? We are looking for YOU!

Compassionate Caregivers needed to work in the NW AR Region!

\$11 - \$15 per hr. Depending on assignment
No Experience Required Paid Training Provided!!

- Flexible Schedules & Locations
- Incentive time off
- Competitive wages
- Caregiver referral bonuses
- 401k/Health/Dental/Vision Insurance
- Unique Assignments
- Specialized training
- Direct Deposit

Retired & newly graduated healthcare professions, RNs, PCAs and CNAs encouraged to apply!

WALK-IN WEDNESDAY! APPLY IN PERSON AND INTERVIEW ON THE SPOT!

Apply in person:
3190 Bella Vista Way
Bella Vista, AR 72714
Contact us @ 479-855-6000 for more information



rah-ar.com



HELP WANTED

Highest Pay in the Area!
Full Time & Part Time Assignments

RNs, LPNs, CNAs & Home Care Aides

Great Pay and Benefits:

Pay Advances • Direct Deposit • Uniform Discounts
• Flexible Schedules • Health Insurance and much more!

Apply online 24/7 at:
www.prnmedstaff.net

Or Apply In Person:
4400 S. Thompson St.
Springdale, AR
479.756.8701

Providing opportunities for the Best Employees Since 1990!



Now Hiring Caring Professionals

If you're out of work and want to help others, consider joining our team.

We are providing care to seniors in our community so they can remain safe at home. We need compassionate people like you to make a difference.



Apply Today

HomeInstead.com/375

479.936.9885

*Serving Northwest Arkansas
Since 2001*

Each Home Instead Senior Care franchise office is independently owned and operated. © 2020 Home Instead, Inc.

NWACC Adult Education Offers

Online instruction available.

- ▶ High School Equivalency (GED®)
- ▶ College Prep for Math
- ▶ College Prep for Literacy
- ▶ English as a Second Language (ESL)
- ▶ Citizenship Classes
- ▶ Career Education



NWACC ADULT EDUCATION

NORTHWEST ARKANSAS
COMMUNITY COLLEGE

Shewmaker Center for Workforce Technologies
1000 S.E. Eagle Way, Bentonville, AR 72712

NWACC Adult Education provides equal access to all programs and activities. Must be 18 years or older to participate. Paid for with funds from the Arkansas Department of Career Education, Adult Education Division.

nwacc.edu | 479.986.6911



For 29 years, Petra Allied Health has kept its tuition low and its classes focused solely on preparing students for entry level healthcare positions.

Classes We Offer

Medical Assistant

Dental Assistant

Nursing Assistant

Electrocardiograph
Technician

Phlebotomy Technician

Limited Licensed
Radiologic Technologist

Medical Billing & Coding

Optometric Assistant

Pharmacy Technician

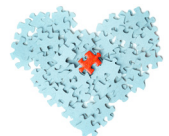
Veterinary Assistant

PetraAlliedHealth.com | 479-750-9876
Licensed by Arkansas Division of Higher Education

If you have a love for helping others, We want to talk with you!

In-Home Personal Care Assistants

- Earn **\$11.00** per hour
- Earn bonuses
- Have paid holidays
- Work up to **40 hours per week**
- Have a flexible part-time work schedule
- Participate in voluntary benefits programs - Including participation in 403(b) retirement plans.
- This is a Safety-Sensitive job for purposes of the AR M.M.A.



Now Offering ONLINE Training!



We provide
**FREE 40-hour
Personal Care
Training ONLINE!**
Check our website for
more information.



Apply on-line:
aanwar.org/Employment

EEO | Employer/AA/M/F/Vet/Disabled
Employment subject to background check and drug screening.

Join Us @ www.noark.org

Affiliate of the Society of Human Resource Management (SHRM)
Membership benefits include:
 Monthly Webinars featuring top local and national speakers
 Learning labs | Seminars | Virtual Networking events
 And More!

Northwest Arkansas NOARK Human Resources Association, Inc.

AR SHRM

AFFILIATE OF SHRM®
 BETTER WORKPLACES BETTER WORLD™

info@noark.org | 479-305-2466



Our birds are only as good as the people who work with them.

If you have a strong sense of integrity, an innovative mind, a desire to be the best, and if you want to work in an environment where people treat each other like family, well, those are the main requirements for all the jobs listed below.

Cobb-Vantress now hiring for:

General Farm Labor Positions

Hours will vary.

Starting Wage:
\$15.45/hr



If interested apply online at:

Cobb-Vantress.com/careers

and search for the locations below to complete application process.

Grand Meadows Farm



**HCR-60, Box 275
 Spavinaw, OK 74366**

Three Springs Farm



**17804 E 606 Road
 Rose, OK 74364**

Bates Mountain Farm



**11718 Bates Mountain Road
 Summers, AR 72769**

Tyson is an Equal Opportunity/Affirmative Action Employer. All qualified applicants will be considered without regard to race, national origin, color, religion, age, genetics, sex, sexual orientation, gender identity, disability or veteran status

TAHRA
 Tulsa Area HUMAN RESOURCES Association

www.tahra.org • admin@tahra.org • 918-344-4622

GET PLUGGED IN!

- Affiliate of the Society for Human Resource Management (SHRM)
- With 500+ members, we are the largest HR chapter in Oklahoma
- Membership benefits include:
 - Monthly program meetings featuring top local and national speakers
 - Learning labs
 - Seminars
 - Networking events
 - And more!

JOIN US @ TAHRA.ORG

AFFILIATE OF SHRM®
 SOCIETY FOR HUMAN RESOURCE MANAGEMENT



Job Opportunities
workatsimmons.com

Prepared Foods

Gentry, AR
Southwest City, MO
Van Buren, AR

Day & Night Shift

- Production
- Maintenance

Prepared Foods

Gentry, AR

NEW SHIFT

- Monday - Thursday
- 4pm - 3am
- 1hr break per day

Animal Nutrition

Siloam Springs, AR
Southwest City, MO

Day & Night Shift

- Utility
- Production
- Maintenance
- Operators

Pet Food

Decatur, AR
Siloam Spring, AR

Day Shift

- Utility
- Operators



Part-Time Opportunities Available - \$14/hr

Multiple shifts + Including Saturdays only

Hiring Bonus: +\$.50/hr for Night Shift (all locations)

Better Basic Benefits:



Build Your Paycheck

- Competitive Pay + Hiring Bonus
- Referral Bonuses
- First 6 Months = Vacation Pay



Simmons Care Clinics

- High-Quality Healthcare
- Team Members & Families
- Free Generic Prescriptions



Education Financial Aid

- Support For GED to PhD.
- On-The-Job Training
- Professional Development

Apply Online or In Person Same-Day Hiring

NWA Hiring Center

2998 Hwy 412 East, Ste 80
Siloam Springs, AR 72761
(844) 400-9357 Option 3

SWC Hiring Center

10700 S. State Hwy 43
Southwest City, MO 64863
(417) 762-3271 Option 3

Fort Smith Hiring Center

4900 Rogers Ave., Suite 103 D
Fort Smith, AR 72903
(479) 262-5390 Option 3

See enhanced safety measures here: simmonsfoods.com/covid19-measures

EEO



McKee Foods Corporation,
manufacturer of America's
1 snack cakes, **Little Debbie®**
snack cakes, located in Gentry, AR,
is taking applications for:

Long Haul Drivers

- Experienced OTR driver with at least 100,000 verifiable miles
- At least two years OTR experience
- Safe driving record
- Current Class A CDL
- Current DOT physical
- At least 23 years old
- Willing to drive team
- Don't mind a physically demanding job

As a driver on our team, you will enjoy perks like:

- Stable, competitive pay scale
- Excellent benefits, including medical, dental, 401(k), profit-sharing and fitness center
- A work environment that is clean, safe and tobacco-free
- Promotion opportunities for high performers

Drive Sweet Success with America's Leading Snack Cake Brand!

Apply on-line at: mckeefoods.com



****Equal Opportunity Employer** M/F/V/D**



CRH is the leading local distributor for products such as rock and asphalt as well as a road construction company. Many of our positions are designed to train you on the job with little to no experience required. APAC, Standard Materials and Arkhola are part of the CRH family.

We're

HIRING

APAC/SMG - AR Openings for NW AR

Contact: (479) 684-5005 or 479-263-2177 for details.
Se Habla Español

- Construction
- Aggregates
- Ready Mix Local Drivers (CDL)
- Field
- Office Personnel

Opportunities Range from Entry Level to Experienced Professionals

BONUS

Potential Sign On Bonus
of up to \$1,500!!!!

Arkhola Openings for Fort Smith, Arkansas

For more information contact Marsha Hayes at: (479) 788-6365.

- | | |
|--|---|
| <ul style="list-style-type: none"> • Customer Service Representative • Heavy Equipment Operator • Quarry Ground Laborer | <ul style="list-style-type: none"> • Ready Mixer Drivers |
|--|---|

APAC Openings for Muskogee, Oklahoma

For more information contact Marsha Hayes at: (479) 788-6365.

- | | |
|---|---|
| <ul style="list-style-type: none"> • Asphalt Superintendent • Class A Heavy Haul Truck Drivers • Construction Heavy Equipment Operator | <ul style="list-style-type: none"> • Construction Laborer • Customer Service Representative • Dispatcher/Scheduler |
|---|---|

APAC Oklahoma Openings for Tulsa, Oklahoma

For more information contact Lisa Chapman at: (918) 556-2236.

- | | |
|--|--|
| <ul style="list-style-type: none"> • Asphalt Loader Operator • Asphalt Plant Mechanic • CDL A Dump Truck Driver | <ul style="list-style-type: none"> • Facilities Maintenance • Quarry Maintenance |
|--|--|

SMG - Oklahoma Openings for Tulsa, Oklahoma

For more information contact Lisa Chapman at: (918) 556-2236.

- | | |
|---|---|
| <ul style="list-style-type: none"> • Plant Operator- Vinita, OK and Claremore, OK • Ready Mix Drivers | <ul style="list-style-type: none"> • Transportation Operations Manager |
|---|---|

You may apply online for any of the above positions and see more listings at:

https://www.crhamericas.com

Competitive Wages, Benefits and Excellent Safety Culture!
APAC Central Inc. is an Affirmative Action and Equal Opportunity Employer

Lindsey Management Co., Inc. provides management services to the multifamily apartment properties listed. Thinking about a new career; property management may be a good field to consider.



We are currently hiring assistant managers, leasing consultants & maintenance techs at various properties. These positions are key to the successful management of apartment properties and are positions that can lead to management. Please visit our website. EOE

www.LindseyMgmt.com

Go to Career Opportunities > Apartment Employment > Apply Now. 



ARKANSAS - NORTHWEST ARKANSAS

FAYETTEVILLE	
Appleby	479.443.9258
Chestnut II	479.521.6895
The Cliffs I	479.582.2540
The Cliffs II	479.444.0400
Cornerstone I/II	479.443.3507
Crafton Place/Starrfire	479.521.6895
Crossover Terrace	479.443.9744
East Oaks/Oakshire I/II	479.443.7278
Fair Park	479.587.9395
The Greens at Lakeside Village	479.442.7663
Lakeside Village	479.443.9022
The Links at Fayetteville	479.966.4340
The Greens at Fayetteville	479.966.4340
The Fairways at Fayetteville	479.966.4340
Markham Hill	479.443.9333
Paradise View	479.521.8299
The Park I/II	479.443.9804
Shiloh	479.442.4384
Southern View I/II	479.443.6698
Stearns Street/Vantage Center	479.527.9851
Valley Lake	479.444.9744
SPRINGDALE	
Bridgestone	479.751.8866
Eastwood	479.927.0676
Johnson Meadows	479.756.1312
The Links at Springdale I/II	479.750.1515
Station	479.756.1312
Sunset I/II/Holcomb	479.750.3030
Walnut Tree	479.751.8866
West End Place/Pleasant Point	479.750.3030
LOWELL	
The Links at Lowell	479.770.2100
ROGERS	
Brentwood I/II	479.631.5800
Briarwood	479.631.5800
Doubletree I/II	479.631.5800
Edgewood	479.631.5800
The Fairways at Lost Springs	479.621.0277
The Greens at Lost Springs	479.631.6515
The Greens on Blossom Way	479.631.2024
Lost Springs	479.621.9399
Turtle Creek I/II/Park	479.631.1444
BENTONVILLE	
Copperstone I/II	479.271.9300
Delmar	479.273.5283
The Links at Bentonville	479.271.0205
The Links at Rainbow Curve	479.657.6446
The Trails at Bentonville	479.657.6633
Moberly Manor I/II	479.273.2540
Moberly Place	479.273.3533
Walton Crossing	479.268.4237
SILOAM SPRINGS	
Spring Valley I/II	479.549.3213

ARKANSAS—REST OF STATE

BENTON	
Dogwood Lakes	501.794.3000
Fountain Lakes	501.778.3134
The Greens at Longhills	501.860.6968
BRYANT	
The Fairways at Hurricane Creek	501.847.7747
The Greens at Hurricane Creek	501.847.2586
The Lakes at Hurricane Creek	501.847.6178
CONWAY	
Centennial Valley I/II	501.513.2555
The Fairways at Nutters Chapel	501.205.8230
Fox Run	501.327.8739
Germantown	501.329.0767
The Greens at Nutters Chapel	501.450.7056
Lake Pointe	501.336.0900
The Links at Cadron Valley	501.513.0000
Salem Park	501.329.5900
Westlake	501.513.9392
FORT SMITH	
The Links at Fort Smith	479.648.8080
Pike Place	479.782.6686
HARRISON	
The Links at Harrison	870.365.3620
JONESBORO	
Gladiola Estates/Gladiola Manor	870.933.8333
The Greens at Jonesboro	870.275.6525
The Links at Jonesboro	870.275.6525
Park Lake	870.933.8333
LITTLE ROCK	
The Links at Eagle Hill	501.407.9088
Eagle Hill	501.455.8818
Eagle Nest	501.407.0567
Westwood I/II	501.455.8862
NORTH LITTLE ROCK	
The Greens at the Rock	501.753.1200
The Links at the Rock	501.812.5020
MARION	
The Fairways at Marion I/II/III	870.739.4949
The Greens at Marion I/II	870.739.6300
PARAGOULD	
Silverwood	870.239.3815
RUSSELLVILLE	
Shadow Lake	479.967.5584
Spring Lake I/II	479.858.7079
SEARCY	
Meadow Lake I/II	501.268.3355
SHERWOOD	
The Links at Sherwood	501.833.8010
TEXARKANA	
The Links at Texarkana	870.773.2295
ALABAMA	
TUSCALOOSA	
The Greens at Tuscaloosa I/II	205.342.3339
The Links at Tuscaloosa	205.247.9978
AUBURN	
The Greens at Auburn	334.821.4061
The Fairways at Auburn I/II	334.209.1850

KANSAS

DERBY	
The Greens at Derby I/II	316.788.3060
The Fairways at Derby	316.788.1028
The Links at Kansas	785.841.3868
The Links at Manhattan	785.539.8448
SHAWNEE	
The Greens at Shawnee	913.422.8295
MISSISSIPPI	
OXFORD	
The Links at Oxford	662.513.4949
CANTON	
The Greens of Madison County	601.391.3464
The Links of Madison County	601.859.5551
The Trails at Madison County	601.436.4707
STARKVILLE	
The Links at Starkville	662.338.1801
MISSOURI	
JOPLIN	
Tanglewood	417.623.3336
SPRINGFIELD	
The Greens at Springfield	417.833.3261
GRANDVIEW	
Grand Summit Apartments	816.331.3968
The Fairways at Grand Summit I/II	816.425.4059
COLUMBIA	
The Links at Columbia	573.474.4399
OKLAHOMA	
BIXBY Tulsa suburb	
The Links on Memorial I/II	918.369.6055
BROKEN ARROW Tulsa suburb	
The Greens at Broken Arrow I/II	918.355.0802
The Greens at Broken Arrow III	918.355.0802
The Greens on Aspen	918.872.8899
CLAREMORE	
Deer Run	918.343.7326
OWASSO	
The Greens at Owasso I/II	918.274.4800
The Greens at Owasso III/IV	918.376.4244
STILLWATER	
The Links at Stillwater	405.372.9910
The Greens at Stillwater	405.372.9910
OKLAHOMA CITY	
The Greens at Lake Overholser	405.494.9888
The Greens at Oklahoma City	405.602.5208
The Links at Oklahoma City	405.936.9211
The Trails at Rockwell	405.604.3583
NORMAN OKC	
The Links at Norman	405.321.3430
The Greens at Norman	405.321.3430
EDMOND OKC	
The Greens at Coffee Creek	405.216.3642
MOORE OKC	
The Greens at Moore	405.794.0062
The Fairways at Moore	405.895.6127
YUKON OKC	
The Links at Mustang Creek	405.577.5151
The Greens at Mustang Creek	405.577.5151



JOIN THE LEADER IN LOGISTIC TECHNOLOGY AND SOLUTIONS. JOIN TRANSPLACE TODAY.

Be part of the Transplace team and work for a company that powers one of the largest managed transportation and logistics networks in the world. We are growing and **WE NEED YOU.**

CHECK OUT OUR OPEN POSITIONS.

Scan the QR code below to learn more about each position and to explore other open job opportunities including:



Customer Service Specialist



Logistics Specialist



Operations Manager



General Manager



APPLY TODAY

Scan the QR code or go to transplace.com/careers.

We're an equal opportunity employer.

Equal Employment Opportunity has been, and will continue to be, a fundamental principle of Transplace, where employment is based upon personal capabilities and qualifications without discrimination because of race, color, religion, sex, age, national origin, disability, or any other protected characteristic as established by law.

TRANSPLACE

transplace.com