

# JOB GUIDE

Jobs in Northwest Arkansas • Southwest Missouri • Tulsa Metro



CRH is the leading local distributor for products such as rock and asphalt as well as a road construction company. Many of our positions are designed to train you on the job with little to no experience required.

APAC, Standard Materials and Arkhola are part of the CRH family.

Competitive Wages, Benefits and Excellent Safety Culture!

## NOW HIRING

- Aggregates
- Construction
- Field
- Office Personnel
- Ready Mix Local Drivers (CDL)

### APAC/SMG AR Openings for NW AR

Contact: (479) 684-5005 or (479) 263-2177.

Se Habla Español

Opportunities Range from Entry Level to Experienced Professionals

**BONUS**

**Potential Sign On Bonus of up to \$1,500!!!!**

### Arkhola Openings for Fort Smith, Arkansas

For more information contact Marsha Hayes at: (479) 788-6365

**Potential Sign On Bonus of up to \$1,500!!!!**

- Asphalt Ground Laborer
- Heavy Equipment Operator
- QC Lab Tech
- Quarry Foreperson
- 2nd Shift Quarry Workers
- Ready Mixer Drivers

### APAC Openings for Muskogee, Oklahoma

For more information contact Marsha Hayes at: (479) 788-6365.

**Potential Sign On Bonus of up to \$1,500!!!!**

- Asphalt Superintendent
- Class A Heavy Haul Truck Drivers
- Construction Heavy Equipment Operator
- Construction Laborer
- Dirt Crew Foreperson
- Ready Mix Drivers
- Shop Mechanic

### APAC Oklahoma Openings for Tulsa, Oklahoma

For more information contact Lisa Chapman at: (918) 556-2236.

- Asphalt Loader Operator
- Asphalt Plant Mechanic
- CDL A Dump Truck Driver
- Construction Laborer
- Construction Heavy
- Equipment Operator
- Concrete Finisher
- Facilities Maintenance
- Grading/Utility Foreman
- Haul Truck Driver
- Quarry Equipment Operator
- Quarry Maintenance
- Quarry Worker
- Scalehouse Clerk

### SMG Oklahoma Openings for Tulsa, Oklahoma

For more information contact Lisa Chapman at: (918) 556-2236.

- Diesel Mechanic
- Class A Bulker Driver
- Class A Dump Driver
- Plant Operator- Vinita, OK and Claremore, OK
- Ready Mix Drivers

You may apply online for any of the above positions and see more listings at:

<https://www.crhamericas.com>

APAC Central Inc. is an Affirmative Action and Equal Opportunity Employer

Issue

Volume 33 Issue 17  
Aug. 20 - Sep. 02, 2021

Advertise

thejobguide.com  
800-654-9776

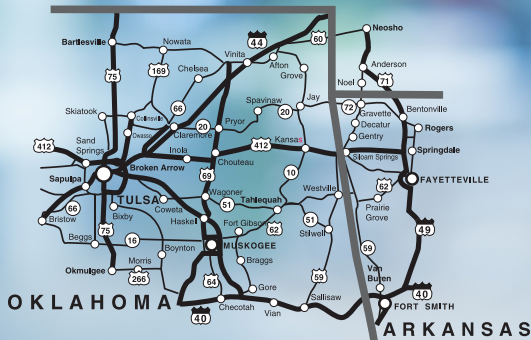
Free

Woman Owned

Say you saw it in the **Job Guide**



### PRINT AND DIGITAL



### COVERAGE MAP

### PRINT COVERAGE

Distributed in NW Arkansas, SW Missouri and Tulsa Metro Area in Workforce Centers, Grocery Stores, Goodwill Centers, Restaurants, Colleges and many more!  
2 Full Weeks of Coverage!

### DIGITAL COVERAGE

Company profile and jobs listed on our website: [thejobguide.com](http://thejobguide.com). Thousands of visitors per month find our website... they will find you!

### COST EFFECTIVE SINCE 1988

No contracts! Graphic design and digital included. Woman owned and locally operated. Let Us Help You Get Results!

**Notice to our Advertisers and Readers:**  
**Job Guide, LLC** is not responsible for ad contents, products or services offered. **Job Guide, LLC** reserves the right to reject advertising it deems unsuitable and liability does not exceed the cost of the advertisement placed. Any reproductions of the contents of this publication without the written consent of the Publisher is strictly prohibited.

**Printing**  
Stigler Printing

**Distribution**  
Job Guide, LLC  
Arkansas Rack Program  
Distributech



**JOB GUIDE**

P.O. Box 813  
Rogers, AR. 72757  
Phone: 800-654-9776  
Fax: 888-232-7659  
[www.TheJobGuide.com](http://www.TheJobGuide.com)



@thejobguide88



@thejobguide88

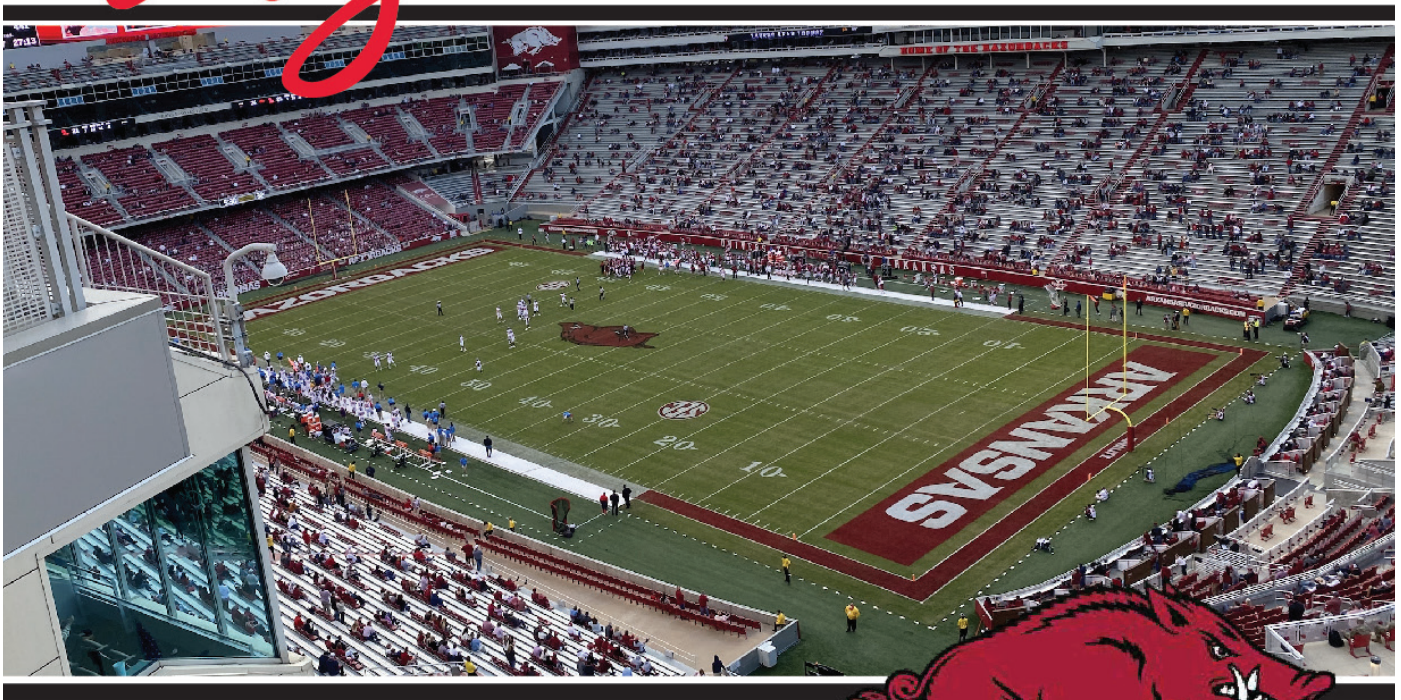


/company/the-job-guide

CEO and Publisher  
**Sunny Martinez**

# Levy

At University of Arkansas



## The Coolest Job In Food and Sports

Levy at the University of Arkansas is looking for hard working and enthusiastic people to join our team!

# NOW HIRING

Part-Time, Event Based Positions

Apply Online at  
[careers.compassgroupcareers.com](https://careers.compassgroupcareers.com)

Bartenders

Concessions Stand Leads

Concessions Stand Workers

Cooks

Dishwashers

Stand Leads

Suite Attendants

Catering Supervisors

Concessions Supervisors

Premium Supervisors

Warehouse Leads

Warehouse Staff

Say you saw it in the Job Guide



ONE FAMILY.  
ONE PURPOSE.

## Bear Hollow FARM

340 Cobb Lane  
Pineville, MO 64856  
1.800.632.0681

# A great place to work!

**Now Accepting Applications Online!**  
**Aceptando solicitudes en línea**

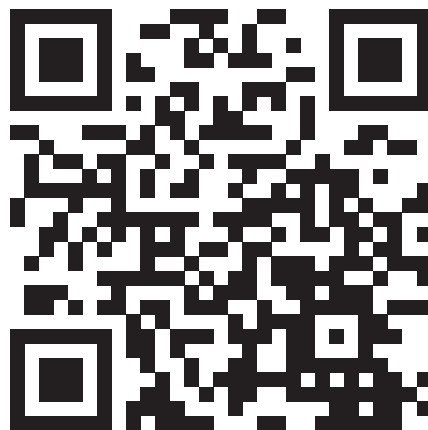
Starting pay begins at \$15.45/hr + shift incentives

Pago inicial comienza a \$15.45/hr

Más incentivos por turno

*Eligible for 9 paid holidays upon hire./Employee Recognition Program/Medical/Dental/Vision/Pharmacy/Life Insurance/Stock/401k Benefits*

*Elegible para 9 días festivos pagados al momento de la contratación. / Programa de reconocimiento de empleados / Médico / Dental / Visión / Farmacia / Seguro de vida / Acciones / Beneficios 401k*



[https://www.cobb-vantress.com/en\\_US/careers/](https://www.cobb-vantress.com/en_US/careers/)

Cobb-Vantress is an Equal Opportunity/Affirmative Action Employer.

All qualified applicants will be considered without regard to race, national origin, color, religion, age, genetics, sex, sexual orientation, gender identity, disability or veteran status.

## MECHANIC NEEDED



Experience in a heavy-duty or transit mechanical shop preferred. ASE certifications preferred. CDL or ability to obtain CDL.

Hourly wage depending on experience.

Excellent Benefits:

Health, Vision, Dental, Paid Vacations, Uniforms provided

457 (b) retirement with employer match

*Women & Minorities encouraged to apply*



2423 E Robinson, Springdale, AR

Apply online: [www.ozark.org](http://www.ozark.org)

479-361-8741 or email: [thill@ozark.org](mailto:thill@ozark.org)

Pre-employment physical, drug test and background check.  
An Equal Employment Opportunity Employer



## Drivers Needed

Excellent Benefits:

Health, Vision, Dental, Paid Holidays, Paid Vacations,  
Retirement with employer match

*Women & Minorities are encouraged to apply*

Apply today at: [www.ozark.org](http://www.ozark.org)

For more information call

479-361-8741 or 479-361-8752

or email: [thill@ozark.org](mailto:thill@ozark.org)

2423 E Robinson, Springdale, AR



Pre-employment physical, drug test and background check.  
An Equal Employment Opportunity Employer



A Walton Arts Center Venue

## BE A PART OF THE SHOW!

Are you an **enthusiastic, hardworking, reliable** individual looking for a **fun and exciting** work environment where you get to experience **live music**?

**Join the Facilities Crew at the Walmart AMP!**

### Members of the Facilities Crew:

- Work as a team to maintain a clean and welcoming atmosphere for staff and patrons
- Work a minimum of 20 hours/week with opportunities for more hours
- Are provided water and Powerade throughout all shifts, and meals on day-of-show shifts
- Are paid \$13/hour and time-and-a-half for hours worked after midnight

### Facilities Crew members must:

- Be 18 years of age or older
- Have reliable transportation
- Work weekends and evenings up to midnight (sometimes later)
- Be able to lift 50lbs
- Work on their feet for long periods of time
- Work outdoors (in sun, heat, wind, rain, cold, etc).
- Work during shows and events in large, crowded environments with loud music, noises, pyrotechnics and cannons
- COVID-19 vaccination is preferred
- Bilingual language skills are a plus

Please **visit our website** to learn more or apply!  
[amptickets.com/about/employment/](http://amptickets.com/about/employment/)

## MID-SOUTH STEAM BOILER



### Immediate Openings for:

## Experienced Industrial Pipe & Tank Insulators

### Experienced Welders

*Must pass welding test.*

- Stick
- Mig
- Tig
- Pipe
- Structural
- Flux Core

*Full Time Positions  
Benefits Package Available*

### Employment Requirements

- Clean driving record, that means no moving violations, DUI's
- Pay based on position/experience
- Stable Work History
- Must be at least 21
- Criminal background checks and drug screens performed on all potential employees

## Ways to join the Team:

Email Resume with references to:

**jobs@midsouthboiler.com**

**Apply Online:**

**midsouthboiler.com**

Fax: **479-262-6446**

EOE



## Do you want to OWN YOUR OWN JANITORIAL BUSINESS?

If you have the drive and desire to make a better life for you and your family, let JAN-PRO take care of you while you take care of your business and lifelong dreams.

## Income

- Realize your dream of financial independence.
- With JAN-PRO franchise, your income potential is truly in the palm of your hands.
- Start with a small number of clients and expand as you add team members to support more customers.

## Flexibility

- On top of earning and growing at your own pace, JAN-PRO lets you work at your own pace – and perhaps your own place, too.
- We offer the flexibility to set your own schedule based on your personal needs and desires, and you don't have to rent office space.
- *Our business model is so simple you can work from home.*

## Support

- No cleaning or business experience? No problem! With JAN-PRO, you'll be in business for yourself – not by yourself.
- With JAN-PRO, you don't have to do any selling. You can focus on providing great service while we find all the customers for you.



# JAN-PRO™

<https://JAN-PRO.com/nwarkansas/franchising/>

Call Pamela Hernandez for more information: 479-480-4190



**NOW HIRING!**  
**Springdale**  
**Public Schools**  
is now accepting applications for  
Part-Time and/or Full-Time

## BUS DRIVERS

- 8 paid holidays
- Teacher Retirement benefits available for full-time employees.
- Other duties may be available with additional pay.
- **Paid Training is available.**

**Beginning Drivers starting pay \$71.47 per day**  
(w/no exp.)

*Refer to transportation salary schedule online for complete pay scale*

Apply in person at 1612 E. Emma Ave, Springdale, AR 72764  
Or applications are available online:

**apply.sdale.org**

*Click the Apply Now tab - Bus Driver Position*

Or call Transportation Dept. for more info @ 479-750-8830

## WE ARE HIRING

Join our team in Bentonville, AR!



### We are hiring for several positions in Embroidery and Warehouse.

These are Full Time Regular positions that are eligible for benefits after 60 days of employment. *Eligible for monthly production bonuses!* All applicants must pass background check and drug screen.



**For full job descriptions  
and to apply, please visit:**  
[www.outdoorcap.com/careers](http://www.outdoorcap.com/careers)

*Outdoor Cap is an equal opportunity employer.*



## COOKS VENTURE

THE FUTURE OF FOOD IS REGENERATIVE

Multiple positions open in 1st, 2nd, and 3rd shifts

Poultry Processing and Shipping positions in Jay, OK  
Farm and Hatchery positions in Decatur, AR

*Starting pay is \$14/hour with opportunities for advancement*



<https://cooksventure.com/pages/careers>

EOE



The University of Arkansas, Fayetteville offers employment opportunities in the fields of:  
Maintenance ■ Custodial ■ Computer Technical ■ Clerical

**Current Opportunities Include:**

- Administrative Specialist II (Two Open Positions)
- Administrative Specialist III
- Administrative Specialist III, Gift Services
- Administrative Specialist III, Mechanical Engineering
- Administrative Support Supervisor for the Department of English
- Database Systems and Records Analyst
- Event Operations Assistant (Six Open Positions)
- Financial Aid Analyst
- Kitchen Equipment/HVAC Technician
- Office Manager (Administrative Specialist III)
- Research Accountant
- Service Assistant (Current and Anticipated Future Openings) (Pool)
- Test Center Manager
- UAF Associate Director of Arkansas Union

The University of Arkansas provides one of the most comprehensive and competitive benefit packages in the region.

- |                     |                          |   |
|---------------------|--------------------------|---|
| • Health Coverage   | • Paid Holidays          | • Short & Long Term Disability          |
| • Dental Coverage   | • Sick Leave             |   |
| • Prescription Drug | • Vacation Leave         | • Employee Assistance Program and More! |
| • Retirement        | • Catastrophic Leave     |   |
| • Basic Life        | • Family & Medical Leave |   |
| • Optional Life     | • Vision                 |   |
| • Tuition Reduction |                          |   |



UNIVERSITY OF ARKANSAS

The University of Arkansas has an in-house temporary employment staffing service called RazorTemps. Apply to this posting if you are interested in being considered for temporary employment opportunities. These positions vary in length and often provide a 'foot in the door' to permanent employment at the University.

The University of Arkansas recognized the challenge of balancing work with personal life, and we pro actively look for ways to help our employees do well at both aspects of their lives. This includes creating health insurance and retirement plans that work well; offering work-time options where possible; promoting career and personal development; and giving paid leave for holidays, illness, vacations, children's educational activities and military duty, among others.

As we strive to represent the best of public higher education, advance Arkansas and build a better world by providing transformational opportunities and skills, promoting an inclusive and diverse culture, nurturing creativity, and solving problems through research and discovery, the University of Arkansas provides excellent opportunities for professional service and that you can be a part of the worthwhile advancement of the University. We believe in fostering a collaborative and innovative culture among our diverse faculty staff and students that promotes a healthy balance.

To apply for above positions, please visit our website at:

<https://uasys.wd5.myworkdayjobs.com/UASYS>

For more information, please contact us at 479.575.5351.

The University of Arkansas is an Equal Opportunity-Affirmative Action Institution.

**Tyson** **JOB FAIR**  
**WEDNESDAY, SEPTEMBER 1!**

Are you looking for a great job with competitive pay and excellent benefits? Then mark your calendar for **Wednesday, September 1.** Tyson Foods' Mexican Original location in Fayetteville, Arkansas, will be hosting a job fair for current positions:

- Maintenance Generalist
- Sanitation
- Forklift Operators
- Machine Operators
- Blender Operators
- Bagger Operator
- General Labor

The job fair will be from 9a.m. to 12p.m. on Wednesday, September 1, at the Mexican Original Facility, 2615 S. School Ave. Fayetteville, AR 72701.

**REQUIREMENTS:**

- Must be at least 18 years old to apply
- Willing to work 12-hour shifts on a rotating schedule for maintenance positions
- Must have 1 Year Maintenance experience (maintenance positions only)
- Must be willing to work on weekends

**TYSON FOODS OFFERS:**

Competitive wages, Excellent benefits package, Paid vacation/holidays, 401 (k), Stock Purchase Plan

**Come join our bakery team!**

Apply online at [www.tysonfoodscareers.com](http://www.tysonfoodscareers.com).

For more information, call 479-521-0677.

Tyson Foods is an Equal Opportunity/Affirmative Action Employer. All qualified applicants will be considered without regard to race, national origin, color, religion, age, genetics, sex, sexual orientation, gender identity, disability or veteran status.



**Unete al Equipo!**

**Nuevo** \$15/hora Salario Inicial



**Planta Berry Street**

**Para las lineas de Cono y La Carne Oscura**  
Las lineas de Cono pueden hacer hasta \$16/hora depende de la posicion  
La Carne Oscura pueden ganar \$4.50/hora adicional con metas incentivadas

Aplique en linea:  
[www.tysonfoodscareers.com](http://www.tysonfoodscareers.com)  
O llame al 479-750-5316

**Posiciones adicionales:**  
**Industrial Maintenance, Jack Driver, Production Lead, Live Hanger, Machine Operator, FSQA Tech, Forklift Driver**  
**(pago varia para estas posiciones)**

Tyson es un Empleador con Igualdad de Oportunidades que practica Acción Afirmativa. Todos los aspirantes calificados se tomarán en cuenta sin hacer distinción alguna hacia la raza, origen nacional, color, religión, edad, genética, sexo, orientación sexual, identidad de género, incapacidad o estado de veterano.





## ***Drive Sweet Success with America's Leading Snack Cake Brand!***

McKee Foods Corporation, manufacturer of America's # 1 snack cakes, Little Debbie® snack cakes, located in Gentry, AR, is taking applications for:

# ***Long Haul Drivers***

- Experienced OTR driver with at least 100,000 verifiable miles
- At least two years OTR experience
- Safe driving record
- Current Class A CDL
- Current DOT physical
- At least 23 years old
- Willing to drive team
- Don't mind a physically demanding job

### ***As a driver on our team, you will enjoy perks like:***

- Stable, competitive pay scale
- Excellent benefits, including medical, dental, 401(k), profit-sharing and fitness center
- A work environment that is clean, safe and tobacco-free
- Promotion opportunities for high performers

***Apply on-line at: [mckeefoods.com](http://mckeefoods.com) or scan the QR Code:***



***\$3,500  
Sign-On  
Bonus***

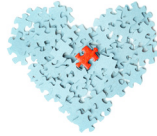


\*\*EOE, including disability/veterans\*\*

If you have a love for helping others, We want to talk with you!

## Become a Personal Care Assistant

- Earn bonuses
- Have paid holidays
- Work up to **40 hours per week**
- Have a flexible part-time work schedule
- Participate in voluntary benefits programs - Including participation in 403(b) retirement plans.
- This is a Safety-Sensitive job for purposes of the AR M.M.A.



We provide **FREE 40-hour Personal Care Training ONLINE!** Check our website for more information.



Apply on-line:  
**aaanwar.org/Employment**

EEO | Employer/AA/M/F/Vet/Disabled  
Employment subject to background check and drug screening.

Are you a compassionate person, who loves helping others?

We are looking for **YOU!**



**Compassionate Caregivers needed to work in the NW AR Region!**

**\$11 - \$15 per hr. Depending on assignment**  
**No Experience Required | Paid Training Provided!!**

- Flexible Schedules & Locations
- Incentive time off
- Competitive wages
- Caregiver referral bonuses
- 401k/Health/Dental/Vision Insurance
- Unique Assignments
- Specialized training
- Direct Deposit

Retired & newly graduated healthcare professions, RNs, PCAs and CNAs encouraged to apply!

**WALK-IN WEDNESDAY!**  
**APPLY IN PERSON AND INTERVIEW ON THE SPOT!**



**Apply in person:**  
3190 Bella Vista Way  
Bella Vista, AR 72714

**rah-ar.com**

Contact us @ 479-855-6000 for more information



**Circle of Life seeking experienced, compassionate candidates to join our TEAM!**

- |                                  |  |
|----------------------------------|--|
| • Administrative Assistant (CCO) | • RN Case Manager (FT Outpatient)                |
| • Admissions RN (PT)             | • Social Worker Inpatient (PT - Monday & Friday) |
| • After Hours RN (FT)            | • Staff RNs (Full Time & PRN)                    |
| • After Hours RN (PT)            | • Unit Administrative Assistant (PRN)            |
| • CNA Inpatient (PRN & FT)       |  |
| • CNA Outpatient (FT)            |  |
| • Housekeeper                    |  |
| • Night Call Nurse (PRN)         |  |



Apply online at: **nwacircleoflife.org**  
Contact Human Resources at: 479-872-3366 or 479-872-3397

Earlene Howard Hospice Home  
901 Jones Road | Springdale, AR 72762

Marie & John Carr Hospice Home  
1201 NE Legacy Parkway | Bentonville, AR 72712  
Drug Free Workplace Equal Opportunity Employer

**Full Time & Part Time Assignments**

**Highest Pay in the Area!**



**RNs, LPNs, CNAs & Home Care Aides**

Great Pay and Benefits:

- Pay Advances
- Direct Deposit
- Uniform Discounts
- Flexible Schedules
- Health Insurance and much more!



Apply online 24/7 at  
**www.prnmedstaff.net**

Or Apply In Person:

4400 S. Thompson St., Springdale, AR  
479.756.8701

Providing *opportunities* for the Best Employees Since 1990!



For 29 years, Petra Allied Health has kept its tuition low and its classes focused solely on preparing students for entry level healthcare positions.

**Classes We Offer**

- Medical Assistant
- Dental Assistant
- Nursing Assistant
- Electrocardiograph Technician
- Phlebotomy Technician
- Limited Licensed Radiologic Technologist
- Medical Billing & Coding
- Optometric Assistant
- Pharmacy Technician
- Veterinary Assistant

PetraAlliedHealth.com | 479-750-9876  
Licensed by Arkansas Division of Higher Education

WE ARE  
HIRING

Day & Night Shift  
Production Positions

**NEW Pay Rates starting at \$14.90 up to \$15.40!**

**\$1.00 Pay Increase after 90 days!**

**\$1.00 Shift Premium!**

\$\$ BONUS PROGRAMS \$\$

**RETENTION BONUS EARNING POTENTIAL:**  
**UP TO \$2000**

**REFERRAL BONUS EARNING POTENTIAL:**  
**UP TO \$2000**

**WEEKLY PERFECT ATTENDANCE BONUS:**  
**\$200**

APPLY ONLINE TODAY AT:

[careers.butterball.com](http://careers.butterball.com)

Don't have a computer at home?  
Apply onsite using our computers | Mon.- Fri., 9 a.m.-4 p.m.  
**1294 N. College Street, Huntsville, AR | 479-738-2151**

EOE including Disability/Vets.



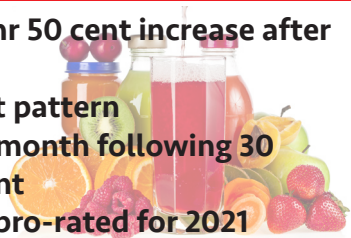
**Lassonde**

**LASSONDE PAPPAS  
AND COMPANY, INC.**

A world leader in the production of fruit juice and related products, **Now Hiring in ALL DEPARTMENTS** in our **Springdale, AR facility:**

Production/Batching/Warehouse

- **Starting Pay: \$15/hr 50 cent increase after 90 days**
- **6pm-6am 3~4 shift pattern**
- **Benefits 1st of the month following 30 days of employment**
- **Vacation and PTO pro-rated for 2021**



NOW OFFERING: **\$1000 SIGN ON BONUS**  
THROUGH 12/31/2021!

Apply online:

<https://lassondepappas.com/careers>

EEO/AAP



Currently taking applications for:

Heavy Equipment Operators (HEO)

- Operates heavy equipment in the construction, improvement, and maintenance of county roads.
- Operates road department equipment including dump trucks, loaders and graders.

Juvenile Detention Officers

- The Juvenile Detention Officer, serves the County by efficiently supervising and maintaining discipline, and meeting these needs of the residents in accordance with federal and state law.
- Work effectively with all divisions and departments and the public.
- Must meet minimum requirements under state law for Juvenile Detention Standards Training (40 hours of training).

For more information or download an application:

[washingtoncountyar.gov](http://washingtoncountyar.gov)

All employees are hired through the:  
Washington County | HR Department  
280 North College, Suite 510 | Fayetteville, AR 72701  
479.973.8465

Applications accepted in person  
Monday - Friday between 8 am and 4 pm

*Females and minorities encouraged to apply.*

EOE



# Taking applications for: Maintenance Tech 3rd Shift



**Weekly bonuses  
+  
\$1,200 Sign-On Bonus!**

**Cargill Offers:**

- Competitive Wages & Weekly Bonus Programs
- Overtime available
- Paid vacation and holidays
- Full Benefit package including medical, dental, vision and 401K

Apply online:

[cargill.com/springdale](http://cargill.com/springdale)

Cargill is an Equal Opportunity Employer, including Disability/Vet. Drug Free Employer



**\$1,200  
Sign-On Bonus!**

**Weekly  
Attendance  
Bonus!**



**New Pay Rates!  
Ranging from:  
\$15.10/hr - \$18.25/hr**

**Cargill Offers:**

- Competitive Wages & Weekly Bonus Programs
- Overtime available
- Paid vacation and holidays
- Full Benefit package including medical, dental, vision and 401K

Apply online:

[www.cargill.com/springdale](http://www.cargill.com/springdale)

Cargill is an Equal Opportunity Employer, including Disability/Vet. Drug Free Employer

**\$1,500 Sign-On Bonus!**

# Offal Operators Floater

**Cargill Offers:**

- Competitive Wages & Weekly Bonus Programs
- Overtime available
- Paid vacation and holidays
- Full Benefit package including medical, dental, vision and 401K

**Starting Rate: \$20.00+ Weekly bonuses**

Apply online:

[www.cargill.com/springdale](http://www.cargill.com/springdale)



**JOIN  
OUR  
TEAM**

Cargill is an Equal Opportunity Employer, including Disability/Vet. Drug Free Employer

**Baseball Cards  
Football Cards  
Basketball Cards**

Check out our selection at:  
[martinezsportscards.com](http://martinezsportscards.com)

Social @  
[martinezsportscards](https://www.instagram.com/martinezsportscards)



*the*  
**MOST INTERESTING  
LAWYERS**  
*in Northwest Arkansas*

[arklawyers.com](http://arklawyers.com)

**MOSTYN  
PRETTYMAN  
PLLC**



## GOODWILL JOB CONNECTION

Check Out the New Job Board:  
[goodwilltulsa.org/gwt/Job\\_Board.asp](http://goodwilltulsa.org/gwt/Job_Board.asp)

- Actively hiring companies in all industries
- Thousands of currently available positions
- Application links directly to those opportunities
- Companies and positions added daily
- Search by Job Title, Company or Category

### GOODWILL JOB CONNECTION Centers are OPEN.

Friendly staff available to assist with your job search. Safety protocols in place to assure a safe working environment. Job search and resume guidance, referral to community resources, and additional assistance available onsite and by phone, email, voicemail, fax, and online.

**Goodwill Job Connection - Tulsa West**  
918-599-0067 - Fax: 918-599-0094  
Clarice Floyd - [cfloyd@goodwilltulsa.org](mailto:cfloyd@goodwilltulsa.org)  
Diane Nash - [dnash@goodwilltulsa.org](mailto:dnash@goodwilltulsa.org)

**Goodwill Job Connection - Tulsa Midtown**  
918-747-1334 - Fax: 918-747-1500  
Stacey Cole - [scole@goodwilltulsa.org](mailto:scole@goodwilltulsa.org)  
Indira Artigas\* - [iartigas@goodwilltulsa.org](mailto:iartigas@goodwilltulsa.org)  
*\*Bilingual assistance available (English/Spanish)*

**TulsaWORKS Career Academy**  
[goodwilltulsa.org/gwt/TulsaWorks3.asp](http://goodwilltulsa.org/gwt/TulsaWorks3.asp)  
918-584-7291 - Fax: 918-583-3219  
**Goodwill Hiring Events Page**  
[goodwilltulsa.org/gwt/Hiring\\_Events.asp](http://goodwilltulsa.org/gwt/Hiring_Events.asp)



**NATIONAL  
BUS SALES**

**Now Hiring!**

## School Bus/Motor Coach Delivery Drivers

**\$5,000 bonus**  
(please contact us for more details.)

**40 cents a mile**

We are currently looking for Full-Time and Part-Time professional drivers to join our team. We are a locally owned bus company that transports across the US. Home most weekends and flexible schedule.

- Must have current Class A/B CDL
- Current Medical Card
- Clean MVR

Call 1-800-475-1439 ext 304 and ask for Debbie  
or apply in person at:  
8649 S Regency Drive Tulsa, OK 74131

# NWACC Adult Education Offers

- ▶ High School Equivalency (GED®)
- ▶ College Prep for Math
- ▶ College Prep for Literacy
- ▶ English as a Second Language (ESL)
- ▶ Citizenship Classes
- ▶ Career Education

**Online instruction available.**



## NWACC ADULT EDUCATION

NORTHWEST ARKANSAS  
COMMUNITY COLLEGE

Shewmaker Center for Workforce Technologies  
1000 S.E. Eagle Way, Bentonville, AR 72712

NWACC Adult Education provides equal access to all programs and activities. Must be 18 years or older to participate. Paid for with funds from the Arkansas Department of Career Education, Adult Education Division.

[nwacc.edu](http://nwacc.edu) | 479.986.6911



**September 2021 NOARK Membership Meeting:**

**Join Us! September 15, 2021**

**DIVERSITY AND INCLUSION  
LEADERSHIP: AN ETHICAL IMPERATIVE.**

**Membership Meeting/Lunch | 11:30 am to 1 pm**

**The Barn at the Springs  
5190 Hwy 112 | Springdale, AR 72745**

*Register today and check out ALL of the Certifications  
that is included with this program!!*

**Register @ [www.noark.org](http://www.noark.org)**



[info@noark.org](mailto:info@noark.org)  
479-305-2466




**ROGERS-LOWELL AREA  
Chamber of Commerce**

Don't miss upcoming networking events  
from the Rogers-Lowell Area Chamber of Commerce



**COFFEE  
Connection**

ROGERS-LOWELL AREA  
Chamber of Commerce

**TUESDAY, AUGUST 31**  
at Family Storage of Rogers | 1250 W. Commons Dr., Rogers

---



**Joint BUSINESS  
After Hours**

with the GREATER BENTONVILLE AREA  
CHAMBER OF COMMERCE

**THURSDAY, SEPTEMBER 16**  
at BHC Insurance | 1626 Empire St., Ste. 201, Lowell

Visit [RogersLowell.com](http://RogersLowell.com) for more information



Tulsa Area HUMAN RESOURCES Association

[www.tahra.org](http://www.tahra.org) • [admin@tahra.org](mailto:admin@tahra.org) • 918-344-4622

**GET PLUGGED IN!**

- Affiliate of the Society for Human Resource Management (SHRM)
- With 500+ members, we are the largest HR chapter in Oklahoma
- Membership benefits include:
  - Monthly program meetings featuring top local and national speakers
  - Learning labs
  - Seminars
  - Networking events
  - And more!

**JOIN US @ [TAHRA.ORG](http://TAHRA.ORG)**





**NORTHWEST ARKANSAS  
JOB FAIR**

**WEDNESDAY,  
OCT. 6<sup>TH</sup> | 2021**  
10:00 A.M. - 3:00 P.M.

FRISCO STATION MALL  
100 N. DIXIELAND RD., ROGERS

**FALL**

The Chamber's **Northwest Arkansas Fall Job Fair** is the largest and longest running Job Fair in Arkansas and is **FREE to Job Seekers**. This is a great opportunity for businesses to get a jump start on hiring for the fall and winter seasons as well as full-time employment opportunities. Availability will be on a first-come first-served basis so reserve your booth today to ensure access to many job seekers expected to attend.

**JOB-SEEKERS | BRING YOUR RESUMES  
TO HAND OUT TO POTENTIAL EMPLOYERS**

For more information or to register a booth visit  
**[ROGERSLOWELL.COM](http://ROGERSLOWELL.COM)**

Lindsey Management Co., Inc. provides management services to the multifamily apartment properties listed. Thinking about a new career; property management may be a good field to consider.



We are currently hiring assistant managers, leasing consultants & maintenance techs at various properties. These positions are key to the successful management of apartment properties and are positions that can lead to management. Please visit our website. EOE

[www.LindseyMgmt.com](http://www.LindseyMgmt.com)

Go to Career Opportunities > Apartment Employment > Apply Now. 



**ARKANSAS - NORTHWEST ARKANSAS**

<b>FAYETTEVILLE</b>	
Appleby .....	479.443.9258
Chestnut II .....	479.521.6895
The Cliffs I .....	479.582.2540
The Cliffs II .....	479.444.0400
Cornerstone I/II .....	479.443.3507
Crafton Place/Starrfire .....	479.521.6895
Crossover Terrace .....	479.443.9744
East Oaks/Oakshire I/II .....	479.443.7278
Fair Park .....	479.587.9395
The Greens at Lakeside Village .....	479.442.7663
Lakeside Village .....	479.443.9022
The Links at Fayetteville .....	479.966.4340
The Greens at Fayetteville .....	479.966.4340
The Fairways at Fayetteville .....	479.966.4340
Markham Hill .....	479.443.9333
Paradise View .....	479.521.8299
The Park I/II .....	479.443.9804
Shiloh .....	479.442.4384
Southern View I/II .....	479.443.6698
Stearns Street/Vantage Center .....	479.527.9851
Valley Lake .....	479.444.9744
<b>SPRINGDALE</b>	
Bridgestone .....	479.751.8866
Eastwood .....	479.927.0676
Johnson Meadows .....	479.756.1312
The Links at Springdale I/II .....	479.750.1515
Station .....	479.756.1312
Sunset I/II/Holcomb .....	479.750.3030
Walnut Tree .....	479.751.8866
West End Place/Pleasant Point .....	479.750.3030
<b>LOWELL</b>	
The Links at Lowell .....	479.770.2100
<b>ROGERS</b>	
Brentwood I/II .....	479.631.5800
Briarwood .....	479.631.5800
Doubletree I/II .....	479.631.5800
Edgewood .....	479.631.5800
The Fairways at Lost Springs .....	479.621.0277
The Greens at Lost Springs .....	479.631.6515
The Greens on Blossom Way .....	479.631.2024
Lost Springs .....	479.621.9399
Turtle Creek I/II/Park .....	479.631.1444
<b>BENTONVILLE</b>	
Copperstone I/II .....	479.271.9300
Delmar .....	479.273.5283
The Links at Bentonville .....	479.271.0205
The Links at Rainbow Curve .....	479.657.6446
The Trails at Bentonville .....	479.657.6633
Moberly Manor I/II .....	479.273.2540
Moberly Place .....	479.273.3533
Walton Crossing .....	479.268.4237
<b>SILVAM SPRINGS</b>	
Spring Valley I/II .....	479.549.3213

**ARKANSAS—REST OF STATE**

<b>BENTON</b>	
Dogwood Lakes .....	501.794.3000
Fountain Lakes .....	501.778.3134
The Greens at Longhills .....	501.860.6968
<b>BRYANT</b>	
The Fairways at Hurricane Creek .....	501.847.7747
The Greens at Hurricane Creek .....	501.847.2586
The Lakes at Hurricane Creek .....	501.847.6178
<b>CONWAY</b>	
Centennial Valley I/II .....	501.513.2555
The Fairways at Nutters Chapel .....	501.205.8230
Fox Run .....	501.327.8739
Germantown .....	501.329.0767
The Greens at Nutters Chapel .....	501.450.7056
Lake Pointe .....	501.336.0900
The Links at Cadron Valley .....	501.513.0000
Salem Park .....	501.329.5900
Westlake .....	501.513.9392
<b>FORT SMITH</b>	
The Links at Fort Smith .....	479.648.8080
Pike Place .....	479.782.6686
<b>HARRISON</b>	
The Links at Harrison .....	870.365.3620
<b>JONESBORO</b>	
Gladiola Estates/Gladiola Manor .....	870.933.8333
The Greens at Jonesboro .....	870.275.6525
The Links at Jonesboro .....	870.275.6525
Park Lake .....	870.933.8333
<b>LITTLE ROCK</b>	
The Links at Eagle Hill .....	501.407.9088
Eagle Hill .....	501.455.8818
Eagle Nest .....	501.407.0567
Westwood I/II .....	501.455.8862
<b>NORTH LITTLE ROCK</b>	
The Greens at the Rock .....	501.753.1200
The Links at the Rock .....	501.812.5020
<b>MARION</b>	
The Fairways at Marion I/II/III .....	870.739.4949
The Greens at Marion I/II .....	870.739.6300
<b>PARAGOULD</b>	
Silverwood .....	870.239.3815
<b>RUSSELLVILLE</b>	
Shadow Lake .....	479.967.5584
Spring Lake I/II .....	479.858.7079
<b>SEARCY</b>	
Meadow Lake I/II .....	501.268.3355
<b>SHERWOOD</b>	
The Links at Sherwood .....	501.833.8010
<b>TEXARKANA</b>	
The Links at Texarkana .....	870.773.2295
<b>ALABAMA</b>	
<b>TUSCALOOSA</b>	
The Greens at Tuscaloosa I/II .....	205.342.3339
The Links at Tuscaloosa .....	205.247.9978
<b>AUBURN</b>	
The Greens at Auburn .....	334.821.4061
The Fairways at Auburn I/II .....	334.209.1850

**KANSAS**

<b>DERBY</b>	
The Greens at Derby I/II .....	316.788.3060
The Fairways at Derby .....	316.788.1028
The Links at Kansas .....	785.841.3868
The Links at Manhattan .....	785.539.8448
<b>SHAWNEE</b>	
The Greens at Shawnee .....	913.422.8295
<b>MISSISSIPPI</b>	
<b>OXFORD</b>	
The Links at Oxford .....	662.513.4949
<b>CANTON</b>	
The Greens of Madison County .....	601.391.3464
The Links of Madison County .....	601.859.5551
The Trails at Madison County .....	601.436.4707
<b>STARKVILLE</b>	
The Links at Starkville .....	662.338.1801
<b>MISSOURI</b>	
<b>JOPLIN</b>	
Tanglewood .....	417.623.3336
<b>SPRINGFIELD</b>	
The Greens at Springfield .....	417.833.3261
<b>GRANDVIEW</b>	
Grand Summit Apartments .....	816.331.3968
The Fairways at Grand Summit I/II .....	816.425.4059
<b>COLUMBIA</b>	
The Links at Columbia .....	573.474.4399
<b>OKLAHOMA</b>	
<b>BIXBY</b> Tulsa suburb	
The Links on Memorial I/II .....	918.369.6055
<b>BROKEN ARROW</b> Tulsa suburb	
The Greens at Broken Arrow I/II .....	918.355.0802
The Greens at Broken Arrow III .....	918.355.0802
The Greens on Aspen .....	918.872.8899
<b>CLAREMORE</b>	
Deer Run .....	918.343.7326
<b>OWASSO</b>	
The Greens at Owasso I/II .....	918.274.4800
The Greens at Owasso III/IV .....	918.376.4244
<b>STILLWATER</b>	
The Links at Stillwater .....	405.372.9910
The Greens at Stillwater .....	405.372.9910
<b>OKLAHOMA CITY</b>	
The Greens at Lake Overholser .....	405.494.9888
The Greens at Oklahoma City .....	405.602.5208
The Links at Oklahoma City .....	405.936.9211
The Trails at Rockwell .....	405.604.3583
<b>NORMAN</b> OKC	
The Links at Norman .....	405.321.3430
The Greens at Norman .....	405.321.3430
<b>EDMOND</b> OKC	
The Greens at Coffee Creek .....	405.216.3642
<b>MOORE</b> OKC	
The Greens at Moore .....	405.794.0062
The Fairways at Moore .....	405.895.6127
<b>YUKON</b> OKC	
The Links at Mustang Creek .....	405.577.5151
The Greens at Mustang Creek .....	405.577.5151



# A better place to build YOUR CAREER



## McKee Foods Corporation

We employ people in all ranges of skills, from those in **production** who wrap up smiles by producing Little Debbie® brand products, to **mechanics, refrigeration and electrical technicians, machine operators and long haul drivers.**

*As a team member, you will enjoy perks like:*

- Competitive pay
- 401(k) matching
- Insurance
- Paid time off
- 24/7 on-site fitness center
- Profit sharing cash bonus
- On-site clinic
- Full & part-time schedules available



Apply on-line at: **mckeefoods.com** or scan the QR Code:



**McKee Foods Corporation**  
555 McKee Drive  
Gentry, AR 72734



McKee Foods Corporation is best known for our line of Little Debbie® brand snack cakes.

\*\*EOE, including disability/veterans\*\*