

JOB GUIDE

Jobs in Northwest Arkansas • Southwest Missouri • Tulsa Metro



CRH is the leading local distributor for products such as rock and asphalt as well as a road construction company. Many of our positions are designed to train you on the job with little to no experience required.

APAC, Standard Materials and Arkhola are part of the CRH family.

Competitive Wages, Benefits and Excellent Safety Culture!

NOW HIRING

- Aggregates
- Construction
- Field
- Office Personnel
- Ready Mix Local Drivers (CDL)

APAC/SMG AR Openings for NW AR

Contact: (479) 684-5005 or (479) 263-2177.

Se Habla Español

Opportunities Range from Entry Level to Experienced Professionals

BONUS Potential Sign On Bonus of up to \$1,500!!!!

Arkhola Openings for Fort Smith, Arkansas

For more information contact Marsha Hayes at: (479) 788-6365

Potential Sign On Bonus of up to \$1,500!!!!

- Asphalt Ground Laborer
- Heavy Equipment Operator
- QC Lab Tech
- Quarry Foreperson
- 2nd Shift Quarry Workers
- Ready Mixer Drivers

APAC Openings for Muskogee, Oklahoma

For more information contact Marsha Hayes at: (479) 788-6365.

Potential Sign On Bonus of up to \$1,500!!!!

- Asphalt Superintendent
- Class A Heavy Haul Truck Drivers
- Construction Heavy Equipment Operator
- Construction Laborer
- Dirt Crew Foreperson
- Ready Mix Drivers
- Shop Mechanic

APAC Oklahoma Openings for Tulsa, Oklahoma

For more information contact Lisa Chapman at: (918) 556-2236.

- Asphalt Loader Operator
- Asphalt Plant Mechanic
- CDL A Dump Truck Driver
- Construction Laborer
- Construction Heavy
- Equipment Operator
- Concrete Finisher
- Facilities Maintenance
- Grading/Utility Foreman
- Haul Truck Driver
- Quarry Equipment Operator
- Quarry Maintenance
- Quarry Worker
- Scalehouse Clerk

SMG Oklahoma Openings for Tulsa, Oklahoma

For more information contact Lisa Chapman at: (918) 556-2236.

- Diesel Mechanic
- Class A Bulker Driver
- Class A Dump Driver
- Plant Operator- Vinita, OK and Claremore, OK
- Ready Mix Drivers

You may apply online for any of the above positions and see more listings at:

<https://www.crhamericas.com>

APAC Central Inc. is an Affirmative Action and Equal Opportunity Employer

Issue

Volume 33 Issue 19
Sep. 17 - Sep. 30, 2021

Advertise

thejobguide.com
800-654-9776

Free

Woman Owned



Berry Street

NUEVO PAGO INICIAL!

1er Turno \$15.20/hora

2o Y 3er Turno \$17.20/hora

Aplique en linea:

www.tysonfoodscareers.com

O llame al 479-750-5316 para una cita

Tyson es un Empleador con Igualdad de Oportunidades que practica Acción Afirmativa. Todos los aspirantes calificados se tomarán en cuenta sin hacer distinción alguna hacia la raza, origen nacional, color, religión, edad, genética, sexo, orientación sexual, identidad de género, incapacidad o estado de veterano.

NOTA: La seguridad es la máxima prioridad en Tyson. A partir del 1 de Septiembre de 2021, los solicitantes exitosos contratados en esta instalación deben estar completamente vacunados contra COVID-19 y proporcionar una prueba de vacunación antes de comenzar a trabajar.



**We Are
HIRING**
Join Our Team

CURRENT OPENINGS

Parks and Recreation: Maintenance Equipment Operator
Minimum Starting Salary: \$13/hour

Performs maintenance and repair tasks necessary to provide safe parks facilities for the public through equipment operation, installing electrical appliances, and turf care

Police: 911 Telecommunicator
Minimum Starting Salary: \$16/hour

To receive incident reports, including emergency calls through 911, and simultaneously enter information into the computer. Operates public safety dispatching equipment as assigned.

Please visit the City of Rogers website for full job description and to apply.

<https://www.rogersar.gov/Jobs>

AN EQUAL OPPORTUNITY EMPLOYER

Notice to our Advertisers and Readers:

Job Guide, LLC is not responsible for ad contents, products or services offered. **Job Guide, LLC** reserves the right to reject advertising it deems unsuitable and liability does not exceed the cost of the advertisement placed. Any reproductions of the contents of this publication without the written consent of the Publisher is strictly prohibited.

Printing
Stigler Printing



JOB GUIDE

Distribution
Job Guide, LLC
Arkansas Rack Program
Distributech

P.O. Box 813
Rogers, AR. 72757
Phone: 800-654-9776
Fax: 888-232-7659
www.TheJobGuide.com



@thejobguide88



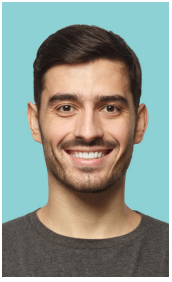
@thejobguide88



/company/the-job-guide

CEO and Publisher
Sunny Martinez

Say you saw it in the Job Guide



A better place to build **YOUR CAREER**



As a team member, you will enjoy perks like:

- 401 (k) Matching & Profit Sharing
- Insurance for Full & Part-time
- Paid Time Off
- 24/7 on-site Fitness Center
- On-site Clinic
- Full, Part-time & Alternative Schedules
- Promotion Opportunities for High Performers
- Planned Overtime Schedules
- Stable Business

McKee Foods is best known for our line of snack cakes.



McKee Foods Corporation
Gentry, AR

• EOE including Disability/Veterans •

We're Hiring!

Production & Sanitation Positions

\$15.30 – \$16.07 Plus Shift Premium



Apply online at:
mckeefoods.com or
scan the QR Code:



We are hiring for several positions in Embroidery and Warehouse.

These are Full Time Regular positions that are eligible for benefits after 60 days of employment. *Eligible for monthly production bonuses!* All applicants must pass background check and drug screen.



For full job descriptions and to apply, please visit:
www.outdoorcap.com/careers

Outdoor Cap is an equal opportunity employer.



Penmac

STAFFING

**1127 S. Gutensohn Rd, Ste. 110
479-408-4448**

Saw it in the Job Guide, fill out an application and ask about a gift. Se habla español



Taking applications for: Maintenance Tech 3rd Shift

Weekly bonuses
+
\$1,200 Sign-On Bonus!

Cargill Offers:

- Competitive Wages & Weekly Bonus Programs
- Overtime available
- Paid vacation and holidays
- Full Benefit package including medical, dental, vision and 401K

Apply online:

cargill.com/springdale

Cargill is an Equal Opportunity Employer, including Disability/Vet. Drug Free Employer



Drivers Needed

Excellent Benefits:

Health, Vision, Dental, Paid Holidays, Paid Vacations,
Retirement with employer match

Women & Minorities are encouraged to apply

Apply today at: www.ozark.org

For more information call
479-361-8741 or 479-361-8752
or email: thill@ozark.org
2423 E Robinson, Springdale, AR



Pre-employment physical, drug test and background check.
An Equal Employment Opportunity Employer

\$1,500 Sign-On Bonus!

Offal Operators Floater

Cargill Offers:

- Competitive Wages & Weekly Bonus Programs
- Overtime available
- Paid vacation and holidays
- Full Benefit package including medical, dental, vision and 401K

Starting Rate: \$20.00+ Weekly bonuses

Apply online:

www.cargill.com/springdale



JOIN
OUR
TEAM

Cargill is an Equal Opportunity Employer, including Disability/Vet. Drug Free Employer



**\$1,200
Sign-On Bonus!**

**Weekly
Attendance
Bonus!**



New Pay Rates!

**Ranging from:
\$15.10/hr - \$18.25/hr**

Cargill Offers:

- Competitive Wages & Weekly Bonus Programs
- Overtime available
- Paid vacation and holidays
- Full Benefit package including medical, dental, vision and 401K

Apply online:

www.cargill.com/springdale

Cargill is an Equal Opportunity Employer, including Disability/Vet. Drug Free Employer

L A  B O Y

¡ÚNETE!
¡AQUÍ HAY
TRABAJO!
2do TURNO

STARTING PAY
\$14.26
PER HOUR

JOIN US!
**WE'RE
HIRING!**
2nd SHIFT

- Pago de Incentivo por equipo.
- Excelente ambiente laboral.
- Grandes beneficios para ti.

- Incentive team pay.
- Comfortable working environment.
- Great benefits package.



**¡VEN A
ENTREVISTA!**

**ON SITE
INTERVIEWS!**

2601 N. Country Club Rd. Siloam Springs, AR

479-215-4336

MECHANIC NEEDED



Experience in a heavy-duty or transit mechanical shop preferred. ASE certifications preferred. CDL or ability to obtain CDL.

Hourly wage depending on experience.

Excellent Benefits:

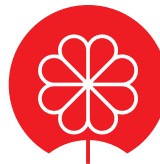
Health, Vision, Dental, Paid Vacations, Uniforms provided
457 (b) retirement with employer match
Women & Minorities encouraged to apply



2423 E Robinson, Springdale, AR

Apply online: www.ozark.org
479-361-8741 or email: thill@ozark.org

Pre-employment physical, drug test and background check.
An Equal Employment Opportunity Employer



Lassonde

LASSONDE PAPPAS
AND COMPANY, INC.

A world leader in the production of fruit juice and related products, **Now Hiring in ALL DEPARTMENTS** in our **Springdale, AR** facility:

Production/Batching/Warehouse

- Starting Pay: \$15/hr 50 cent increase after 90 days
- 6pm-6am 3~4 shift pattern
- Benefits 1st of the month following 30 days of employment
- Vacation and PTO pro-rated for 2021



**NOW OFFERING: \$1000 SIGN ON BONUS
THROUGH 12/31/2021!**

Apply online:

<https://lassondepappas.com/careers>

EEO/AAP



Immediate Openings for:

Experienced Industrial Pipe & Tank Insulators

Experienced Welders

Must pass welding test.

- Stick
- Mig
- Tig
- Pipe
- Structural
- Flux Core

*Full Time Positions
Benefits Package Available*

Employment Requirements

- Clean driving record, that means no moving violations, DUI's
- Pay based on position/experience
- Stable Work History
- Must be at least 21
- Criminal background checks and drug screens performed on all potential employees

Ways to join the Mid-South Steam Boiler Team:

Email Resume with references to:
jobs@midsouthboiler.com

Apply Online:
midsouthboiler.com

Fax: **479-262-6446** EOE



- Machine Operators/Operadores de Maquina
- Extrusion Operators/Operador de Extrusión
- Maintenance Techs/Mecánicos
- Quality Techs/Control de Calidad
- General Labor/Producción General

We Offer/Ofrecemos:

- 3 1/2 Day Work Week/Semana de 3 dias y medio
- Competitive Wages & Benefits/Pago y Beneficios Competitivos
- Bonus Earning Potential/Potencial de Bonos
- Day and Night Openings Posiciones de Dia y Noche
- Advancement Opportunities/Oportunidades de Crecimiento



MoistureShield

COMPOSITE DECKING

Apply online/Aplique en línea en:

<https://jobs.crh.com>

Search/ Busque: "MoistureShield"

Apply onsite/ Aplique en Persona:

Mon/Lunes – Fri/Viernes: 9 am – 4 pm

**801 N. Jefferson St.
Springdale, AR 72764
479-750-1299**

Equal Opportunity Employer and Drug Free Workplace



NOW HIRING!
Springdale

Public Schools

is now accepting applications for
Part-Time and/or Full-Time

BUS DRIVERS

- 8 paid holidays
- Teacher Retirement benefits available for full-time employees.
- Other duties may be available with additional pay.
- **Paid Training is available.**

Beginning Drivers starting pay \$71.47 per day
(w/no exp.)

Refer to transportation salary schedule online for complete pay scale

Apply in person at **1612 E. Emma Ave, Springdale, AR 72764**

Or applications are available online:

apply.sdale.org

Click the Apply Now tab - Bus Driver Position

Or call Transportation Dept. for more info @ **479-750-8830**



\$\$ BONUS PROGRAMS \$\$

RETENTION BONUS EARNING POTENTIAL:

UP TO \$2000

REFERRAL BONUS EARNING POTENTIAL:

UP TO \$2000

WEEKLY PERFECT ATTENDANCE BONUS:

\$200

WE Are Now Hiring:

Day & Night Shift Production Positions

NEW Pay Rates starting at: \$14.90 up to \$15.40!

\$1.00 Pay Increase after 90 days!

\$1.00 Shift Premium!

APPLY ONLINE TODAY AT:

careers.butterball.com

Don't have a computer at home?

Apply onsite using our computers | Mon.- Fri., 9 a.m.-4 p.m.

1294 N. College Street, Huntsville, AR | 479-738-2151

EOE including Disability/Vets.



WEDNESDAY, OCT. 6TH | 2021
10:00 A.M. - 3:00 P.M.

FRISCO STATION MALL | 100 N. DIXIELAND RD., ROGERS

The Chamber's **Northwest Arkansas Fall Job Fair** is the largest and longest running Job Fair in Arkansas and is **FREE to Job Seekers**. This is a great opportunity for businesses to get a jump start on hiring for the fall and winter seasons as well as full-time employment opportunities. Availability will be on a first-come first-served basis so reserve your booth today to ensure access to many job seekers expected to attend.

JOB-SEEKERS | BRING YOUR RESUMES TO HAND OUT TO POTENTIAL EMPLOYERS

For more information or to register a booth visit **ROGERSLOWELL.COM**



The University of Arkansas,
Fayetteville offers
employment opportunities in
the fields of:
Maintenance ■ Custodial ■
Computer Technical ■ Clerical

Current Opportunities Include:

- Administrative Analyst
- Administrative Specialist III
- Administrative Specialist III, Law School
- Bus Operator (Four Open Positions)
- Certified Nursing Assistant
- Coordinator of Housekeeping
- Fiscal Support Specialist, Gift Services
- HEI Program Coordinator
- Institutional Services Supervisor
- Maintenance Worker
- Office Manager (Administrative Specialist III)
- Parking Control Officer – Evening Shift
- Service Assistant (Current and Anticipated Future Openings) (Pool)

The University of Arkansas provides one of the most comprehensive and competitive benefit packages in the region.

- | | | |
|---------------------|--------------------------|--------------------------------|
| • Health Coverage | • Paid Holidays | • Vision |
| • Dental Coverage | • Sick Leave | • Short & Long Term Disability |
| • Prescription Drug | • Vacation Leave | • Employee Assistance |
| • Retirement | • Catastrophic Leave | • Family & Medical Leave |
| • Basic Life | • Family & Medical Leave | • Program and More! |
| • Optional Life | | |
| • Tuition Reduction | | |



UNIVERSITY OF ARKANSAS

The University of Arkansas has an in-house temporary employment staffing service called RazorTemps. Apply to this posting if you are interested in being considered for temporary employment opportunities. These positions vary in length and often provide a 'foot in the door' to permanent employment at the University.

The University of Arkansas recognized the challenge of balancing work with personal life, and we pro actively look for ways to help our employees do well at both aspects of their lives. This includes creating health insurance and retirement plans that work well; offering work-time options where possible; promoting career and personal development; and giving paid leave for holidays, illness, vacations, children's educational activities and military duty, among others.

As we strive to represent the best of public higher education, advance Arkansas and build a better world by providing transformational opportunities and skills, promoting an inclusive and diverse culture, nurturing creativity, and solving problems through research and discovery, the University of Arkansas provides excellent opportunities for professional service and that you can be a part of the worthwhile advancement of the University. We believe in fostering a collaborative and innovative culture among our diverse faculty staff and students that promotes a healthy balance.

To apply for above positions, please visit our website at:

<https://uasys.wd5.myworkdayjobs.com/UASYS>

For more information, please contact us at 479.575.5351.

The University of Arkansas is an Equal Opportunity-Affirmative Action Institution.



Highest Pay in the Area!
Full Time & Part Time Assignments

RNs, LPNs, CNAs & Home Care Aides

Great Pay and Benefits:

- Pay Advances • Direct Deposit • Uniform Discounts
- Flexible Schedules • Health Insurance and much more!



Apply online 24/7 at:

www.prnmedstaff.net

Or Apply In Person:

4400 S. Thompson St.
Springdale, AR
479.756.8701

Providing opportunities for the Best Employees Since 1990!



Circle of Life seeking experienced, compassionate candidates to join our TEAM!

- | | |
|----------------------------------|--|
| • Administrative Assistant (CCO) | • RN Case Manager (FT Outpatient) |
| • Admissions RN (PT) | • Social Worker Inpatient (PT - Monday & Friday) |
| • After Hours RN (FT) | • Staff RNs (Full Time & PRN) |
| • After Hours RN (PT) | • Unit Administrative Assistant (PRN) |
| • CNA Inpatient (PRN & FT) | |
| • CNA Outpatient (FT) | |
| • Night Call Nurse (PRN) | |



Apply online at: nwacircleoflife.org
Contact Human Resources at: 479-872-3366 or 479-872-3397

Earlene Howard Hospice Home
901 Jones Road | Springdale, AR 72762

Marie & John Carr Hospice Home
1201 NE Legacy Parkway | Bentonville, AR 72712
Drug Free Workplace Equal Opportunity Employer



NOW HIRING Caregivers

For our 59 apartment Assisted Living Memory Care.

12-hour day and night shifts are available.

- Perform various resident care activities and related nonprofessional services essential to caring for personal needs and comfort of residents in a Memory Care setting.
- Assist all residents with a high quality of personal care.
- Practice exceptional customer service in all interactions with residents, fellow employees, and guests.
- High School diploma preferred
- One year of experience working as a CNA/PCA/RA preferred.

Apply In Person:
**1967 W Truckers Drive
 Fayetteville, AR 72704**
Or Online:
avenirseniorliving.com

COVID-19 considerations: Everyone entering the building is screened for COVID-19 symptoms and all staff and visitors wear masks. EOE



McKee Foods Corporation, manufacturer of America's #1 snack cakes, located in Gentry, AR, is taking applications for:

Nurse, PRN

Guaranteed one shift per week.

Required for position:

- Arkansas license and one year of LPN experience
- CPR certified
- Ability to work multiple shifts

We offer:

- Competitive pay scale
- a work environment that is clean, safe, drug free and tobacco free.



Apply at:
mckeefoods.com
 or scan the QR Code:



EOE, including disability/veterans

Are you a compassionate person, who loves helping others?



We are looking for YOU!

Compassionate Caregivers needed to work in the NW AR Region!

- Flexible Schedules & Locations
- Incentive time off
- Competitive wages
- Caregiver referral bonuses
- 401k/Health/Dental/Vision Insurance
- Unique Assignments
- Specialized training
- Direct Deposit

\$11 - \$15 per hr. *No Experience Required*
 Depending on assignment *Paid Training Provided!!*

Retired & newly graduated healthcare professions, RNs, PCAs and CNAs encouraged to apply!

WALK-IN WEDNESDAY!
APPLY IN PERSON AND INTERVIEW ON THE SPOT!

Apply in person:
3190 Bella Vista Way | Bella Vista, AR 72714
Contact us @ 479-855-6000 for more information

rah-ar.com

If you have a love for helping others, We want to talk with you!

Become a Personal Care Assistant

- Earn bonuses
- Have paid holidays
- Work up to **40 hours per week**
- Have a flexible part-time work schedule
- Participate in voluntary benefits programs - Including participation in 403(b) retirement plans.
- This is a Safety-Sensitive job for purposes of the AR M.M.A.



Offering ONLINE Training!



We provide FREE 40-hour Personal Care Training ONLINE!
 Check our website for more information.

Apply on-line:
aanwar.org/Employment



EEO | Employer/AA/M/F/Vet/Disabled
 Employment subject to background check and drug screening.



For 29 years, Petra Allied Health has kept its tuition low and its classes focused solely on preparing students for entry level healthcare positions.

Classes We Offer

Medical Assistant

Dental Assistant

Nursing Assistant

Electrocardiograph Technician

Phlebotomy Technician

Limited Licensed Radiologic Technologist

Medical Billing & Coding

Optometric Assistant

Pharmacy Technician

Veterinary Assistant

PetraAlliedHealth.com | 479-750-9876
Licensed by Arkansas Division of Higher Education



Currently taking applications for:

Heavy Equipment Operators (HEO)

- Operates heavy equipment in the construction, improvement, and maintenance of county roads.
- Operates road department equipment including dump trucks, loaders and graders.

Juvenile Detention Officers

- The Juvenile Detention Officer, serves the County by efficiently supervising and maintaining discipline, and meeting these needs of the residents in accordance with federal and state law.
- Work effectively with all divisions and departments and the public.
- Must meet minimum requirements under state law for Juvenile Detention Standards Training (40 hours of training).

For more information or download an application:

washingtoncountyar.gov

All employees are hired through the:
Washington County | HR Department
280 North College, Suite 510 | Fayetteville, AR 72701
479.973.8465

Applications accepted in person
Monday - Friday between 8 am and 4 pm

EOE

Females and minorities encouraged to apply.

NWACC Adult Education Offers

Online instruction available.

- ▶ High School Equivalency (GED®)
- ▶ College Prep for Math
- ▶ College Prep for Literacy
- ▶ English as a Second Language (ESL)
- ▶ Citizenship Classes
- ▶ Career Education



NWACC ADULT EDUCATION

NORTHWEST ARKANSAS
COMMUNITY COLLEGE

Shewmaker Center for Workforce Technologies
1000 S.E. Eagle Way, Bentonville, AR 72712

NWACC Adult Education provides equal access to all programs and activities. Must be 18 years or older to participate. Paid for with funds from the Arkansas Department of Career Education, Adult Education Division.

nwacc.edu | 479.986.6911



COOKS VENTURE
THE FUTURE OF FOOD IS REGENERATIVE

JOB OPENINGS IN
JAY OKLAHOMA

\$1,500

SIGN & STAY BONUS

\$300 FIRST FULL PAY PERIOD + **\$100** PER WEEK FOR 12 WEEKS

STARTING RATE:

\$18-\$20

(including attendance incentive)



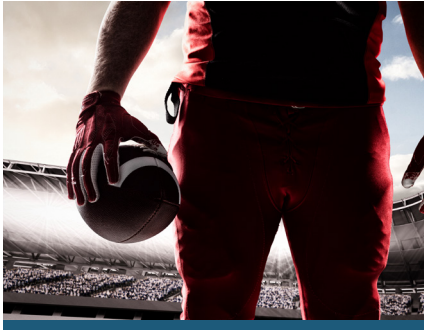
SCAN ME

APPLY NOW

cooksventure.com/pages/careers

NIL NAME, IMAGE AND LIKENESS

We're a full service sports marketing agency. Let us help your brand take advantage of athlete endorsement opportunities using NIL!



MARTINEZ AGENCY

866-641-7692

martinez-agency.com

alex@martinez-agency.com

Alex Martinez
CEO / SPORTS AGENT

GET YOU ONE OF THEM FANCY LAWYERS





Job Opportunities
workatsimmons.com

Prepared Foods

Gentry, AR
Southwest City, MO
Van Buren, AR

Day & Night Shift

- Production
- Maintenance

Prepared Foods

Gentry, AR

New Shift

- Monday - Thursday
- 4pm - 3am
- 1hr break per day

Animal Nutrition

Siloam Springs, AR
Southwest City, MO

Day & Night Shift

- Utility Production
- Maintenance
- Operators

Pet Food

Siloam Springs, AR

Day & Night Shift

- Utility
- Maintenance
- Refrigeration



Part-Time Opportunities Available

Multiple shifts + Including Saturdays only

Siloam Springs & Gentry, AR Locations

Starting Pay: \$15.50 - \$19.75/hr

Southwest City, MO Locations

Starting Pay: \$17.25 - \$19/hr

Hiring Bonus: +\$.50/hr for Night Shift *(all locations)*

Better Basic Benefits:



Build Your Paycheck

- Competitive Pay + Hiring Bonus
- Referral Bonuses
- First 6 Months = Vacation Pay
- Vacation Match (Currently Employed)



Simmons Care Clinics

- High-Quality Healthcare
- Team Members & Families
- Free Generic Prescriptions



Education Financial Aid

- Support For GED to PhD.
- On-The-Job Training
- Professional Development

Apply Online or In Person Same-Day Hiring

NWA Hiring Center

2998 Hwy 412 East, Ste 80
Siloam Springs, AR 72761
(844) 400-9357 Option 3

SWC Hiring Center

10700 S. State Hwy 43
Southwest City, MO 64863
(417) 762-3271 Option 3

Fort Smith Hiring Center

4900 Rogers Ave., Suite 103 D
Fort Smith, AR 72903
(479) 262-5390 Option 3

Save the Date!

HR2021

A Clear Vision of the Future

Arkansas SHRM 2021 HR Conference & Expo • Sep 29 - Oct 1 • Rogers, Arkansas

Keynotes, General Sessions & Concurrent Sessions Expo Hall Opportunities

HR2021.org

If you were a paid registrant for 2020, your registration carried over to this year's event. Watch our website for more information coming soon.

We can't wait to see you!




info@noark.org | 479-305-2466

Affiliate of the Society of Human Resource Management (SHRM)

Membership benefits include:

- Monthly program meeting featuring top local and national speakers
- Learning labs
- Seminars
- Networking events
- And More!

Join us @


www.noark.org



AR SHRM Arkansas SHRM State Council, Inc.

AFFILIATE OF SHRM®

BETTER WORKPLACES BETTER WORLD™



ROGERS-LOWELL AREA Chamber of Commerce


Don't miss upcoming networking events from the Rogers-Lowell Area Chamber of Commerce



BUSINESS
After Hours

THURSDAY, SEPTEMBER 30

at Ritter Communications | 5078 Northgate Rd., Ste. 220, Rogers



COFFEE
Connection

TUESDAY, OCTOBER 12

at Java Dudes Coffee Company | 718 N. 2nd St., Rogers

Visit RogersLowell.com for more information


JOIN US

Home-Based Opportunity

THE DECISIONS AND ACTIONS WE MAKE TODAY DETERMINE WHERE WE'LL BE TOMORROW...

Are you ready to be a part of something global with real value and purpose? Whether your goal is to improve your own health, help others improve theirs, or do both while building a big and successful Vasayo business, we invite you to join hands with us.

Learn More:
<http://martinezwellness.vasayo.com>



Lindsey Management Co., Inc. provides management services to the multifamily apartment properties listed. Thinking about a new career; property management may be a good field to consider.



We are currently hiring assistant managers, leasing consultants & maintenance techs at various properties. These positions are key to the successful management of apartment properties and are positions that can lead to management. Please visit our website. EOE

www.LindseyMgmt.com

Go to Career Opportunities > Apartment Employment > Apply Now. 



ARKANSAS - NORTHWEST ARKANSAS

| | |
|--------------------------------------|--------------|
| FAYETTEVILLE | |
| Appleby | 479.443.9258 |
| Chestnut II | 479.521.6895 |
| The Cliffs I | 479.582.2540 |
| The Cliffs II | 479.444.0400 |
| Cornerstone I/II | 479.443.3507 |
| Crafton Place/Starrfire | 479.521.6895 |
| Crossover Terrace | 479.443.9744 |
| East Oaks/Oakshire I/II | 479.443.7278 |
| Fair Park | 479.587.9395 |
| The Greens at Lakeside Village | 479.442.7663 |
| Lakeside Village | 479.443.9022 |
| The Links at Fayetteville | 479.966.4340 |
| The Greens at Fayetteville | 479.966.4340 |
| The Fairways at Fayetteville | 479.966.4340 |
| Markham Hill | 479.443.9333 |
| Paradise View | 479.521.8299 |
| The Park I/II | 479.443.9804 |
| Shiloh | 479.442.4384 |
| Southern View I/II | 479.443.6698 |
| Stearns Street/Vantage Center | 479.527.9851 |
| Valley Lake | 479.444.9744 |
| SPRINGDALE | |
| Bridgestone | 479.751.8866 |
| Eastwood | 479.927.0676 |
| Johnson Meadows | 479.756.1312 |
| The Links at Springdale I/II | 479.750.1515 |
| Station | 479.756.1312 |
| Sunset I/II/Holcomb | 479.750.3030 |
| Walnut Tree | 479.751.8866 |
| West End Place/Pleasant Point | 479.750.3030 |
| LOWELL | |
| The Links at Lowell | 479.770.2100 |
| ROGERS | |
| Brentwood I/II | 479.631.5800 |
| Briarwood | 479.631.5800 |
| Doubletree I/II | 479.631.5800 |
| Edgewood | 479.631.5800 |
| The Fairways at Lost Springs | 479.621.0277 |
| The Greens at Lost Springs | 479.631.6515 |
| The Greens on Blossom Way | 479.631.2024 |
| Lost Springs | 479.621.9399 |
| Turtle Creek I/II/Park | 479.631.1444 |
| BENTONVILLE | |
| Copperstone I/II | 479.271.9300 |
| Delmar | 479.273.5283 |
| The Links at Bentonville | 479.271.0205 |
| The Links at Rainbow Curve | 479.657.6446 |
| The Trails at Bentonville | 479.657.6633 |
| Moberly Manor I/II | 479.273.2540 |
| Moberly Place | 479.273.3533 |
| Walton Crossing | 479.268.4237 |
| SILOAM SPRINGS | |
| Spring Valley I/II | 479.549.3213 |

ARKANSAS—REST OF STATE

| | |
|---------------------------------------|--------------|
| BENTON | |
| Dogwood Lakes | 501.794.3000 |
| Fountain Lakes | 501.778.3134 |
| The Greens at Longhills | 501.860.6968 |
| BRYANT | |
| The Fairways at Hurricane Creek | 501.847.7747 |
| The Greens at Hurricane Creek | 501.847.2586 |
| The Lakes at Hurricane Creek | 501.847.6178 |
| CONWAY | |
| Centennial Valley I/II | 501.513.2555 |
| The Fairways at Nutters Chapel | 501.205.8230 |
| Fox Run | 501.327.8739 |
| Germantown | 501.329.0767 |
| The Greens at Nutters Chapel | 501.450.7056 |
| Lake Pointe | 501.336.0900 |
| The Links at Cadron Valley | 501.513.0000 |
| Salem Park | 501.329.5900 |
| Westlake | 501.513.9392 |
| FORT SMITH | |
| The Links at Fort Smith | 479.648.8080 |
| Pike Place | 479.782.6686 |
| HARRISON | |
| The Links at Harrison | 870.365.3620 |
| JONESBORO | |
| Gladiola Estates/Gladiola Manor | 870.933.8333 |
| The Greens at Jonesboro | 870.275.6525 |
| The Links at Jonesboro | 870.275.6525 |
| Park Lake | 870.933.8333 |
| LITTLE ROCK | |
| The Links at Eagle Hill | 501.407.9088 |
| Eagle Hill | 501.455.8818 |
| Eagle Nest | 501.407.0567 |
| Westwood I/II | 501.455.8862 |
| NORTH LITTLE ROCK | |
| The Greens at the Rock | 501.753.1200 |
| The Links at the Rock | 501.812.5020 |
| MARION | |
| The Fairways at Marion I/II/III | 870.739.4949 |
| The Greens at Marion I/II | 870.739.6300 |
| PARAGOULD | |
| Silverwood | 870.239.3815 |
| RUSSELLVILLE | |
| Shadow Lake | 479.967.5584 |
| Spring Lake I/II | 479.858.7079 |
| SEARCY | |
| Meadow Lake I/II | 501.268.3355 |
| SHERWOOD | |
| The Links at Sherwood | 501.833.8010 |
| TEXARKANA | |
| The Links at Texarkana | 870.773.2295 |
| ALABAMA | |
| TUSCALOOSA | |
| The Greens at Tuscaloosa I/II | 205.342.3339 |
| The Links at Tuscaloosa | 205.247.9978 |
| AUBURN | |
| The Greens at Auburn | 334.821.4061 |
| The Fairways at Auburn I/II | 334.209.1850 |

KANSAS

| | |
|---|--------------|
| DERBY | |
| The Greens at Derby I/II | 316.788.3060 |
| The Fairways at Derby | 316.788.1028 |
| The Links at Kansas | 785.841.3868 |
| The Links at Manhattan | 785.539.8448 |
| SHAWNEE | |
| The Greens at Shawnee | 913.422.8295 |
| MISSISSIPPI | |
| OXFORD | |
| The Links at Oxford | 662.513.4949 |
| CANTON | |
| The Greens of Madison County | 601.391.3464 |
| The Links of Madison County | 601.859.5551 |
| The Trails at Madison County | 601.436.4707 |
| STARKVILLE | |
| The Links at Starkville | 662.338.1801 |
| MISSOURI | |
| JOPLIN | |
| Tanglewood | 417.623.3336 |
| SPRINGFIELD | |
| The Greens at Springfield | 417.833.3261 |
| GRANDVIEW | |
| Grand Summit Apartments | 816.331.3968 |
| The Fairways at Grand Summit I/II | 816.425.4059 |
| COLUMBIA | |
| The Links at Columbia | 573.474.4399 |
| OKLAHOMA | |
| BIXBY Tulsa suburb | |
| The Links on Memorial I/II | 918.369.6055 |
| BROKEN ARROW Tulsa suburb | |
| The Greens at Broken Arrow I/II | 918.355.0802 |
| The Greens at Broken Arrow III | 918.355.0802 |
| The Greens on Aspen | 918.872.8899 |
| CLAREMORE | |
| Deer Run | 918.343.7326 |
| OWASSO | |
| The Greens at Owasso I/II | 918.274.4800 |
| The Greens at Owasso III/IV | 918.376.4244 |
| STILLWATER | |
| The Links at Stillwater | 405.372.9910 |
| The Greens at Stillwater | 405.372.9910 |
| OKLAHOMA CITY | |
| The Greens at Lake Overholser | 405.494.9888 |
| The Greens at Oklahoma City | 405.602.5208 |
| The Links at Oklahoma City | 405.936.9211 |
| The Trails at Rockwell | 405.604.3583 |
| NORMAN OKC | |
| The Links at Norman | 405.321.3430 |
| The Greens at Norman | 405.321.3430 |
| EDMOND OKC | |
| The Greens at Coffee Creek | 405.216.3642 |
| MOORE OKC | |
| The Greens at Moore | 405.794.0062 |
| The Fairways at Moore | 405.895.6127 |
| YUKON OKC | |
| The Links at Mustang Creek | 405.577.5151 |
| The Greens at Mustang Creek | 405.577.5151 |



\$3,500 Sign-On Bonus

Drive Sweet Success with America's Leading Snack Cake Brand!

McKee Foods Corporation, manufacturer of America's # 1 snack cakes, Little Debbie® snack cakes, located in Gentry, AR, is taking applications for:

Long Haul Drivers

- Experienced OTR driver with at least 18 months OTR experience
- Safe driving record
- Current Class A CDL
- Current DOT physical
- At least 23 years old
- Willing to drive team
- Don't mind a physically demanding job



As a driver on our team, you will enjoy perks like:

- Stable, competitive pay scale
- Excellent benefits, including medical, dental, 401(k), profit-sharing and fitness center
- A work environment that is clean, safe and tobacco-free
- Promotion opportunities for high performers

Apply on-line at:

mckeefoods.com

or scan the QR Code →



EOE, including disability/veterans