

# JOB GUIDE

Jobs in Northwest Arkansas • Southwest Missouri • Tulsa Metro

**EXCELLENT PAY  
RATES UP TO  
\$21.50/ HR!**

Relocation Assistance  
Paid Weekly

Company provided lunches

## ORIENTATIONS DAILY!

Sign on Bonus up to \$2000 over first 6 months of employment for newly hired employees!

## CURRENT OPENINGS:

**Maintenance:**

**Production &**

**Sanitation:**

- **Industrial Maintenance**

1st, 2nd and 3rd Shift | \$1.50/hr shift differential for working evening/night shift | Must have maintenance experience.

- **Production, Cone Line, Portioning & Dark Meat**

1st and 2nd Shift | No experience needed

- **Sanitation Overnight Shift** | No experience

needed | \$14/hr with available \$.50/hr weekly attendance bonus and other weekly incentive pay



Exceptional Quality, Exceeding Expectations

Se Habla Espanol | EOE

## JOIN OUR TEAM TODAY!

Apply: [southeastpoultry.com](http://southeastpoultry.com)

Or pick up an application at:

2200 Town West Dr.

Rogers, AR 72756

Issue

Volume 33 Issue 20  
Oct. 01 - Oct. 14, 2021

Advertise

thejobguide.com  
800-654-9776

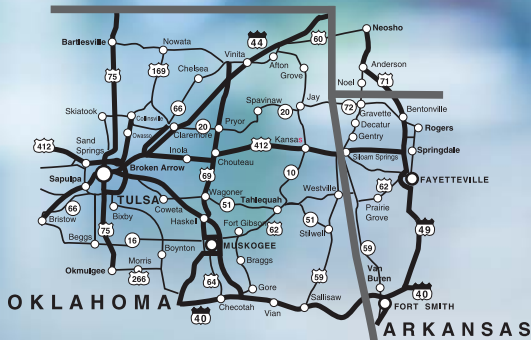
*Free*

Woman Owned

Say you saw it in the **Job Guide**



**PRINT AND DIGITAL**



**COVERAGE MAP**

**PRINT COVERAGE**

Distributed in NW Arkansas, SW Missouri and Tulsa Metro Area in Workforce Centers, Grocery Stores, Goodwill Centers, Restaurants, Colleges and many more!  
2 Full Weeks of Coverage!

**DIGITAL COVERAGE**

Company profile and jobs listed on our website: [thejobguide.com](http://thejobguide.com). Thousands of visitors per month find our website... they will find you!

**COST EFFECTIVE SINCE 1988**

No contracts! Graphic design and digital included. Woman owned and locally operated. Let Us Help You Get Results!

**Notice to our Advertisers and Readers:**

**Job Guide, LLC** is not responsible for ad contents, products or services offered. **Job Guide, LLC** reserves the right to reject advertising it deems unsuitable and liability does not exceed the cost of the advertisement placed. Any reproductions of the contents of this publication without the written consent of the Publisher is strictly prohibited.

**Printing**  
Stigler Printing



**JOB GUIDE**

**Distribution**  
Job Guide, LLC  
Arkansas Rack Program  
Distributech

P.O. Box 813  
Rogers, AR. 72757  
Phone: 800-654-9776  
Fax: 888-232-7659  
[www.TheJobGuide.com](http://www.TheJobGuide.com)



@thejobguide88



@thejobguide88



/company/the-job-guide

CEO and Publisher  
**Sunny Martinez**



Rogers, AR

WestRock is a leading global packaging company and provider of paper and packaging solutions in global consumer and corrugated markets.

We are currently taking applications for:

## Machine Operators

**Starting Pay: \$15.61**

**Position Pay: \$17.06 - \$20.28**

Manufacturing experience preferred but not required, High School Diploma or GED required. Must be available to work any shift assigned (3 shift operation). Must be available for daily and/or weekend overtime as required.

## Maintenance Electrical Tech I/II

**Position Pay: \$26.76 - \$31.22**

High School Diploma, GED, further education in Maintenance technology. Testing required to qualify. This is a Multi-Craft position experience required.



## On-Site Job Fair Oct. 13 & Oct. 14

8 am - Noon & 2 pm - 6 pm

**WestRock**

**2021 S. 5th St., Rogers, AR 72758**

Masks are required to enter the facility.

*Competitive Benefits including, Medical/Dental/Vision/401K/Employee Stock purchase plan and other offerings.*

For more information and to apply go to:

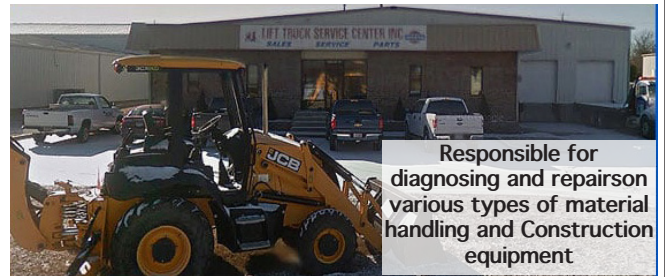
**westrock.com/careers**

WestRock Company is an Equal Opportunity Employer committed to creating and maintaining a diverse workforce: Minorities/Females/Disabled/Veterans



LIFT TRUCK SERVICE CENTER

## Service Techs Needed



Responsible for diagnosing and repairson various types of material handling and Construction equipment

Lift Truck Service Center is Arkansas' premier supplier of construction equipment and material handling vehicles. We offer new and used equipment, parts, rentals, and service.

At Lift Truck Service Center, we are dedicated to providing the best service, which means hiring the top employees available in Arkansas. We are always on the hunt for new employees who are eager and ready to join our growing team.

### COMPETITIVE PAY & BENEFITS

Health, Dental, Vision, 401K, Paid Vacation and a Company Van

### Apply in Person:

1211 ESI DRIVE SPRINGDALE, AR 72764

Or Email: [Accounting03@ltscinc.com](mailto:Accounting03@ltscinc.com)

Pre-employment drug test and background check  
An Equal Employment Opportunity Employer

## National Holiday Hiring Event

### 'TIS THE SEASON FOR HIRING

Share your love for the outdoors.  
Help us gear up for the holidays.



*Cabela's*

Seasonal & Regular  
Positions available!

**OCTOBER  
13TH-14TH**

10 am - 7 pm

- Immediate on-site Interviews at Bass Pro Shops, 2300 Promenade Blvd. Rogers, AR 72758
- Apply online in advance at [basspro.com/careers](http://basspro.com/careers) (walk-ins welcome)
- Merchandise discounts up to 45%
- Benefits & Perks



Equal Opportunity Employer. Drug-Free Workplace



**COOKS VENTURE**  
THE FUTURE OF FOOD IS REGENERATIVE

**JOB OPENINGS IN**  
**JAY** OKLAHOMA

# \$1,500

## SIGN & STAY BONUS

**\$300** FIRST FULL PAY PERIOD + **\$100** PER WEEK FOR 12 WEEKS

**STARTING RATE:**  
**\$18 – \$20**

(including attendance incentive)



SCAN ME

**APPLY NOW**

[cooksventure.com/pages/careers](https://cooksventure.com/pages/careers)



A better  
place  
to build  
**YOUR**  
**CAREER**



*As a team member, you will enjoy perks like:*

McKee Foods Corporation  
Gentry, AR

\*EOE, including disability/veterans\*

- 401 (k) Matching & Profit Sharing
- Insurance for Full & Part-time
- Paid Time Off
- 24/7 on-site Fitness Center
- On-site Clinic
- Full, Part-time & Alternative Schedules
- Promotion Opportunities for High Performers
- Planned Overtime Schedules
- Stable Business

*We're Hiring!*

# Manufacturing Positions

**\$15.30 - \$16.07 Plus Shift Premium**



**\$1,000  
SIGN ON  
BONUS!**



McKee Foods is best known for our line of snack cakes.



Apply on-line at:  
**[mckeefoods.com](http://mckeefoods.com)** or  
scan the QR Code:



**NOW  
HIRING**

## Caregivers

For our 59 apartment Assisted Living Memory Care.

**12-hour day and night shifts are available.**

- Perform various resident care activities and related nonprofessional services essential to caring for personal needs and comfort of residents in a Memory Care setting.
- Assist all residents with a high quality of personal care.
- Practice exceptional customer service in all interactions with residents, fellow employees, and guests.
- High School diploma preferred
- One year of experience working as a CNA/PCA/RA preferred.

Apply In Person:

**1967 W Truckers Drive  
Fayetteville, AR 72704**

Or Online:

**avenirseniorliving.com**

COVID-19 considerations: Everyone entering the building is screened for COVID-19 symptoms and all staff and visitors wear masks. EOE



McKee Foods Corporation,  
manufacturer of  
America's #1 snack cakes,  
located in Gentry, AR,  
is taking applications for:



**Nurse, PRN**

**Guaranteed one  
shift per week.**

Required for position:

- Arkansas license and one year of LPN experience
- CPR certified
- Ability to work multiple shifts

We offer:

- Competitive pay scale
- a work environment that is clean, safe, drug free and tobacco free.



Apply at:  
**mckeefoods.com**  
or scan the QR Code:



\*\*EOE, including disability/veterans\*\*

Providing opportunities for the Best Employees Since 1990!



**Full Time & Part Time Assignments  
RNs, LPNs, CNAs &  
Home Care Aides**

**Highest Pay in the Area!**



Great Pay and Benefits:

- Pay Advances • Direct Deposit
- Uniform Discounts • Flexible Schedules
- Health Insurance and much more!

**Apply In Person:**

**4400 S. Thompson St., Springdale, AR  
479.756.8701**

**Apply online 24/7 at:  
www.prnmedstaff.net**



**Circle of Life seeking experienced,  
compassionate candidates to join our TEAM!**

- Admissions RN (PT)
- After Hours RN (FT)
- After Hours RN (PT)
- CNA Inpatient (PRN & FT)
- CNA Outpatient (FT)
- Night Call Nurse (PRN)
- RN Case Manager (FT Outpatient)
- Social Worker - Care Navigation (FT)
- Social Worker Inpatient (PT)
- Staff RNs (Full Time & PRN)
- Unit Administrative Assistant (PRN)



**Apply online at: nwacircleoflife.org**  
Contact Human Resources at: 479-872-3366 or 479-872-3397

**Earlene Howard Hospice Home  
901 Jones Road | Springdale, AR 72762**

**Marie & John Carr Hospice Home  
1201 NE Legacy Parkway | Bentonville, AR 72712**  
Drug Free Workplace Equal Opportunity Employer

Are you a compassionate person,  
who loves helping others?



We are looking for  
**YOU!**

**Compassionate Caregivers needed to  
work in the NW AR Region!**

- Flexible Schedules & Locations
- Incentive time off
- Competitive wages
- Caregiver referral bonuses
- 401k/Health/Dental/Vision Insurance
- Unique Assignments
- Specialized training
- Direct Deposit

**\$11 - \$15 per hr.** *No Experience Required*  
Depending on assignment *Paid Training Provided!!*

Retired & newly graduated healthcare professions,  
RNs, PCAs and CNAs encouraged to apply!

**WALK-IN WEDNESDAY!**  
**APPLY IN PERSON AND INTERVIEW ON THE SPOT!**

**Apply in person:**  
3190 Bella Vista Way | Bella Vista, AR 72714  
*Contact us @ 479-855-6000 for more information*

**rah-ar.com**

If you have a love for helping  
others, We want to talk with you!

## Become a Personal Care Assistant

- Earn bonuses
- Have paid holidays
- Work up to **40 hours per week**
- Have a flexible part-time work schedule
- Participate in voluntary benefits programs - Including participation in 403(b) retirement plans.
- This is a Safety-Sensitive job for purposes of the AR M.M.A.



We provide  
**FREE 40-hour  
Personal Care  
Training ONLINE!**  
Check our website for  
more information.



Apply on-line:  
**aanwar.org/Employment**

EEO | Employer/AA/M/F/Vet/Disabled  
Employment subject to background check and drug screening.



For 29 years, Petra Allied Health has kept its tuition low and its classes focused solely on preparing students for entry level healthcare positions.

### Classes We Offer

Medical Assistant

Dental Assistant

Nursing Assistant

Electrocardiograph  
Technician

Phlebotomy Technician

Limited Licensed  
Radiologic Technologist

Medical Billing & Coding

Optometric Assistant

Pharmacy Technician

Veterinary Assistant

PetraAlliedHealth.com | 479-750-9876  
Licensed by Arkansas Division of Higher Education



**Tyson**

**Berry Street**

**NUEVO PAGO INICIAL!**

**1er Turno \$15.20/hora**

**2º Y 3er Turno \$17.20/hora**

**Mecanico Industrial**

**Produccion**

**Chofer**

Aplique en linea:

**[www.tysonfoodscareers.com](http://www.tysonfoodscareers.com)**

O llame al 479-750-5316 para una cita

Tyson es un Empleador con Igualdad de Oportunidades que practica Acción Afirmativa. Todos los aspirantes calificados se tomarán en cuenta sin hacer distinción alguna hacia la raza, origen nacional, color, religión, edad, genética, sexo, orientación sexual, identidad de género, incapacidad o estado de veterano.

**NOTA:** La seguridad es la máxima prioridad en Tyson. A partir del 1 de Septiembre de 2021, los solicitantes exitosos contratados en esta instalación deben estar completamente vacunados contra COVID-19 y proporcionar una prueba de vacunación antes de comenzar a trabajar.



CRH is the leading local distributor for products such as rock and asphalt as well as a road construction company. Many of our positions are designed to train you on the job with little to no experience required. APAC, Standard Materials and Arkhola are part of the CRH family.

**We're HIRING** **APAC/SMG - AR Openings for NW AR**  
 Contact: (479) 684-5005 or (479) 263-2177 for details.  
 Se Habla Español

- Construction
- Aggregates
- Ready Mix Local Drivers (CDL)
- Field
- Office Personnel

**BONUS** **Potential Sign On Bonus of up to \$1,500!!!!**

**Opportunities Range from Entry Level to Experienced Professionals**

**Arkhola Openings for Fort Smith, Arkansas** **Potential Sign On Bonus of up to \$1,500!!!!**  
 For more information contact Marsha Hayes at: (479) 788-6365.

- Asphalt Ground Laborer
- QC Lab Tech
- Ready Mixer Drivers
- Heavy Equipment Operator
- 2nd Shift Quarry Workers

**APAC Openings for Muskogee, Oklahoma** **Potential Sign On Bonus of up to \$1,500!!!!**  
 For more information contact Marsha Hayes at: (479) 788-6365.

- Asphalt Superintendent
- Construction Heavy Equipment Operator
- Dirt Crew Foreperson
- Class A Heavy Haul Truck Drivers
- Construction Laborer
- Ready Mixers Drivers
- Shop Mechanic

**APAC Oklahoma Openings for Tulsa, Oklahoma**  
 For more information contact Lisa Chapman at: (918) 556-2236.

- Asphalt Plant Mechanic
- CDL A Dump Truck Driver
- Construction Laborer
- Construction Heavy Equipment Operator
- Concrete Finisher
- Facilities Maintenance
- Quarry Equipment Operator
- Quarry Maintenance
- Quarry Worker

**SMG - Oklahoma Openings for Tulsa, Oklahoma**  
 For more information contact Lisa Chapman at: (918) 556-2236.

- Diesel Mechanic
- Class A Bulker Driver
- Class A Dump Driver
- Plant Operator- Vinita, OK and Claremore, OK
- Ready Mix Drivers

You may apply online for any of the above positions and see more listings at:  
<https://www.crhamericas.com>

**Competitive Wages, Benefits and Excellent Safety Culture!**  
 APAC Central Inc. is an Affirmative Action and Equal Opportunity Employer





**Housing Authority of the City of Tulsa, OK NOW HIRING!**

THA provides publicly assisted housing comprised of traditional public housing, mixed-finance sites and housing vouchers. Currently, THA provides assistance to more than 20,000 individuals, or 7,200 families.



**Maintenance Technician**  
\$13.41/hr - \$15.15/hr

Perform routine apartment maintenance including non-licensed carpentry, electrical, plumbing, appliance maintenance, heating and air conditioning. Picks up trash and performs general cleanup of the common area. Perform semi-skilled tasks using power tools such as sander, saws and drills. Requires 6 month of experience and a valid driver's license.



**Senior Maintenance Technician**  
\$15.26/hr - \$17.24/hr

Perform as a Lead on a team providing apartment maintenance work including non-licensed: carpentry, electrical, plumbing, appliance maintenance, heating and air conditioning in a fast pace work environment. Requires 1 year of experience and a valid driver's license.



**Maintenance Supervisor**  
\$21.36/hr- \$24.13/hr

Supervises and coordinates activities of staff engaged in maintaining and repairing mechanical, electrical and physical structures of buildings and maintaining grounds at various Tulsa Housing Authority owned and/or managed properties. Requires 1-3 years experience, one additional year experience as a supervisor and a valid driver's license.

**Full Time 7:30 am - 4 pm, Monday - Friday**  
**All positions must be able to work on call - On call is on rotation amongst Maintenance Staff.**

**Excellent benefits include:**

Health, Dental, Vision, Life, LTD/STD, 401(k) with 11% Employer Contribution, 12 paid vacation days, 12 paid sick days and 13 paid Holidays, company fitness center and more.

**Apply at:**

**[tulsahousing.org/career-opportunities/](https://tulsahousing.org/career-opportunities/)**

Employment at THA is contingent on: 1) being fully vaccinated against COVID-19 or 2) receiving approval for a medical or religious exemption. THA will allow new hires a reasonable amount of time to become vaccinated if they are not fully vaccinated at the time of hire.

**EOE**

**We perform criminal background checks and drug screening**

**The University of Arkansas, Fayetteville offers employment opportunities in the fields of:**  
**Maintenance ■ Custodial**  
**■ Computer Technical ■ Clerical**

**Current Opportunities Include:**

- Administrative Support Supervisor
- Administrative Support Supervisor: Gift Services
- Animal Care Technician
- Budget and Planning Manager
- Certified Nursing Assistant
- Coordinator for Residence Education
- Coordinator of Access and Programs
- Gifts and Grants Fiscal Manager
- Horticulture Specialist (Hot Springs Location)
- Online Student Coaching Coordinator

**The University of Arkansas provides one of the most comprehensive and competitive benefit packages in the region.**

- |                     |                                         |
|---------------------|-----------------------------------------|
| • Health Coverage   | • Vacation Leave                        |
| • Dental Coverage   | • Catastrophic Leave                    |
| • Prescription Drug | • Family & Medical Leave                |
| • Retirement        | • Vision                                |
| • Basic Life        | • Short & Long Term Disability          |
| • Optional Life     | • Employee Assistance Program and More! |
| • Tuition Reduction |                                         |
| • Paid Holidays     |                                         |
| • Sick Leave        |                                         |



**UNIVERSITY OF ARKANSAS**

The University of Arkansas has an in-house temporary employment staffing service called RazorTemps. Apply to this posting if you are interested in being considered for temporary employment opportunities. These positions vary in length and often provide a 'foot in the door' to permanent employment at the University.

The University of Arkansas recognized the challenge of balancing work with personal life, and we pro actively look for ways to help our employees do well at both aspects of their lives. This includes creating health insurance and retirement plans that work well; offering work-time options where possible; promoting career and personal development; and giving paid leave for holidays, illness, vacations, children's educational activities and military duty, among others.

As we strive to represent the best of public higher education, advance Arkansas and build a better world by providing transformational opportunities and skills, promoting an inclusive and diverse culture, nurturing creativity, and solving problems through research and discovery, the University of Arkansas provides excellent opportunities for professional service and that you can be a part of the worthwhile advancement of the University. We believe in fostering a collaborative and innovative culture among our diverse faculty staff and students that promotes a healthy balance.

To apply for above positions, please visit our website at:

**<https://uasys.wd5.myworkdayjobs.com/UASYS>**

For more information, please contact us at **479.575.5351**.

The University of Arkansas is an Equal Opportunity-Affirmative Action Institution.



Currently taking applications for:

### Heavy Equipment Operators (HEO)

- Operates heavy equipment in the construction, improvement, and maintenance of county roads.
- Operates road department equipment including dump trucks, loaders and graders.

### Juvenile Detention Officers

- The Juvenile Detention Officer, serves the County by efficiently supervising and maintaining discipline, and meeting these needs of the residents in accordance with federal and state law.
- Work effectively with all divisions and departments and the public.
- Must meet minimum requirements under state law for Juvenile Detention Standards Training (40 hours of training).

For more information or download an application:

[washingtoncountyar.gov](http://washingtoncountyar.gov)

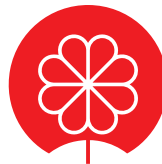
All employees are hired through the:

Washington County | HR Department  
280 North College, Suite 510 | Fayetteville, AR 72701  
479.973.8465

Applications accepted in person  
Monday - Friday between 8 am and 4 pm

EOE

Females and minorities encouraged to apply.



Lassonde

LASSONDE PAPPAS  
AND COMPANY, INC.

A world leader in the production of fruit juice and related products, **Now Hiring in ALL DEPARTMENTS** in our **Springdale, AR facility:**

### Production/Batching/Warehouse

- **Starting Pay: \$15/hr 50 cent increase after 90 days**
- **6pm-6am 3~4 shift pattern**
- **Benefits 1st of the month following 30 days of employment**
- **Vacation and PTO pro-rated for 2021**



**NOW OFFERING: \$1000 SIGN ON BONUS THROUGH 12/31/2021!**

**Apply online:**

<https://lassondepappas.com/careers>

EEO/AAP

## Break into the retail industry as a Certified Retail Analyst

- » Improve analytical skills to advance in your career
- » Over 87% job placement rate
- » Well respected program in Walmart and the Walmart supplier community

Semester begins October 18.

**Learn more: [www.nwacc.edu/CRA](http://www.nwacc.edu/CRA)**



WORKFORCE &  
ECONOMIC DEVELOPMENT






**NOW HIRING!**  
**Springdale**  
**Public Schools**  
 is now accepting applications for  
 Part-Time and/or Full-Time

**BUS DRIVERS**

- 8 paid holidays
- Teacher Retirement benefits available for full-time employees.
- Other duties may be available with additional pay.
- **Paid Training is available.**

**Beginning Drivers starting pay \$71.47 per day**  
 (w/no exp.)  
*Refer to transportation salary schedule online for complete pay scale*

Apply in person at **1612 E. Emma Ave, Springdale, AR 72764**  
 Or applications are available online:  
**apply.sdale.org**  
*Click the Apply Now tab - Bus Driver Position*  
 Or call Transportation Dept. for more info @ **479-750-8830**

**National Holiday Hiring Event**

**'TIS THE SEASON FOR HIRING**  
 Share your love for the outdoors.  
 Help us gear up for the holidays.




**OCTOBER**  
**13TH - 14TH**  
 10 am - 7 pm

Seasonal & Regular Positions available!

- Immediate on-site Interviews at Bass Pro Shops, 2300 Promenade Blvd. Rogers, AR 72758
- Apply online in advance at [basspro.com/careers](http://basspro.com/careers) (walk-ins welcome)
- Merchandise discounts up to 45%
- Benefits & Perks







Equal Opportunity Employer. Drug-Free Workplace

**L A Z B O Y**

**¡ÚNETE!**  
**¡AQUÍ HAY TRABAJO!**  
**2do TURNO**

**STARTING PAY**  
**\$14.26**  
**PER HOUR**

**JOIN US!**  
**WE'RE HIRING!**  
**2nd SHIFT**

- Pago de Incentivo por equipo.
- Excelente ambiente laboral.
- Grandes beneficios para ti.
- Incentive team pay.
- Comfortable working environment.
- Great benefits package.




**¡VEN A ENTREVISTA!**  
**2601 N. Country Club Rd. Siloam Springs, AR**

**ON SITE INTERVIEWS!**  
**479-215-4336**



**\$1,200**

**Sign-On Bonus!**

**Weekly Attendance Bonus!**

**New Pay Rates!**

**Ranging from:**

**\$15.10/hr - \$18.25/hr**



**Cargill Offers:**

- Competitive Wages & Weekly Bonus Programs
- Overtime available
- Paid vacation and holidays
- Full Benefit package including medical, dental, vision and 401K

**Apply online:**

**[www.cargill.com/springdale](http://www.cargill.com/springdale)**

Cargill is an Equal Opportunity Employer, including Disability/Vet. Drug Free Employer



**Taking applications for:**

**Maintenance Tech  
3rd Shift**

**Weekly bonuses**

**+**

**\$1,200 Sign-On Bonus!**

**Cargill Offers:**

- Competitive Wages & Weekly Bonus Programs
- Overtime available
- Paid vacation and holidays
- Full Benefit package including medical, dental, vision and 401K

**Apply online:**

**[cargill.com/springdale](http://cargill.com/springdale)**

Cargill is an Equal Opportunity Employer, including Disability/Vet. Drug Free Employer



**Now Hiring!**

**General Helpers**

**Experienced Welders**

- Stick
- Mig
- Tig
- Pipe
- Structural
- Flux Core

**Full Time Positions Benefits Package Available**

**Must pass welding test.**

**Employment Requirements**

- Clean driving record, that means no moving violations, DUI's
- Pay based on position/experience
- Stable Work History
- Must be at least 21
- Criminal background checks and drug screens performed on all potential employees

**Ways to join the Mid-South Steam Boiler Team:**

Email Resume with references to:  
**[jobs@midsouthboiler.com](mailto:jobs@midsouthboiler.com)**

**Apply Online:**  
**[midsouthboiler.com](http://midsouthboiler.com)**

**Fax: 479-262-6446**

EOE

**\$1,500 Sign-On Bonus!**

# Offal Operators Floater

**Cargill Offers:**

- Competitive Wages & Weekly Bonus Programs
- Overtime available
- Paid vacation and holidays
- Full Benefit package including medical, dental, vision and 401K

**Starting Rate: \$20.00+ Weekly bonuses**

**Apply online:**

**[www.cargill.com/springdale](http://www.cargill.com/springdale)**



Cargill is an Equal Opportunity Employer, including Disability/Vet. Drug Free Employer



**We Are  
HIRING**  
Join Our Team

## CURRENT OPENINGS

### **Parks and Recreation: Maintenance Equipment Operator** *Minimum Starting Salary: \$13/hour*

Performs maintenance and repair tasks necessary to provide safe parks facilities for the public through equipment operation, installing electrical appliances, and turf care

### **Police: 911 Telecommunicator** *Minimum Starting Salary: \$16/hour*

To receive incident reports, including emergency calls through 911, and simultaneously enter information into the computer. Operates public safety dispatching equipment as assigned.

**Please visit the City of Rogers website for full job description and to apply.**

**<https://www.rogersar.gov/Jobs>**

AN EQUAL OPPORTUNITY EMPLOYER

# NWACC Adult Education Offers

- ▶ High School Equivalency (GED®)
- ▶ College Prep for Math
- ▶ College Prep for Literacy
- ▶ English as a Second Language (ESL)
- ▶ Citizenship Classes
- ▶ Career Education

**Online instruction available.**



## NWACC ADULT EDUCATION

NORTHWEST ARKANSAS  
COMMUNITY COLLEGE

Shewmaker Center for Workforce Technologies  
1000 S.E. Eagle Way, Bentonville, AR 72712

NWACC Adult Education provides equal access to all programs and activities. Must be 18 years or older to participate. Paid for with funds from the Arkansas Department of Career Education, Adult Education Division.

**[nwacc.edu](http://nwacc.edu) | 479.986.6911**



Job Opportunities  
[workatsimmons.com](http://workatsimmons.com)

**Prepared Foods**

Gentry, AR  
Southwest City, MO  
Van Buren, AR

**Day & Night Shift**

- Production
- Maintenance

**Prepared Foods**

Gentry, AR

**New Shift**

- Monday - Thursday
- 4pm - 3am
- 1hr break per day

**Animal Nutrition**

Siloam Springs, AR  
Southwest City, MO

**Day & Night Shift**

- Utility Production
- Maintenance
- Operators

**Pet Food**

Siloam Springs, AR

**Day & Night Shift**

- Utility
- Maintenance
- Refrigeration



**Part-Time Opportunities Available**

Multiple shifts + Including Saturdays only

**Siloam Springs & Gentry, AR Locations**

Starting Pay: \$15.50 - \$19.75/hr

**Southwest City, MO Locations**

Starting Pay: \$17.25 - \$19/hr

Hiring Bonus: +\$.50/hr for Night Shift *(all locations)*

**Better Basic Benefits:**



**Build Your Paycheck**

- Competitive Pay + Hiring Bonus
- Referral Bonuses
- First 6 Months = Vacation Pay
- Vacation Match (Currently Employed)



**Simmons Care Clinics**

- High-Quality Healthcare
- Team Members & Families
- Free Generic Prescriptions



**Education Financial Aid**

- Support For GED to PhD.
- On-The-Job Training
- Professional Development

**Apply Online or In Person Same-Day Hiring**

**NWA Hiring Center**

2998 Hwy 412 East, Ste 80  
Siloam Springs, AR 72761  
**(844) 400-9357 Option 3**

**SWC Hiring Center**

10700 S. State Hwy 43  
Southwest City, MO 64863  
**(417) 762-3271 Option 3**

**Fort Smith Hiring Center**

4900 Rogers Ave., Suite 103 D  
Fort Smith, AR 72903  
**(479) 262-5390 Option 3**

See enhanced safety measures here: [simmonsfoods.com/covid19-measures](http://simmonsfoods.com/covid19-measures)

EEO

# Drivers Needed for NWA Routes



Full and Part-Time Routes Available

Excellent Benefits:  
Health, Vision, Dental, Paid Holidays,  
Paid Vacations, Retirement with  
employer match

Women, Minorities and Retirees are encouraged to apply

Apply today at: [www.ozark.org](http://www.ozark.org)



For more information call  
479-361-8741 or 479-361-8752  
or email: [thill@ozark.org](mailto:thill@ozark.org)  
2423 E Robinson, Springdale, AR

Pre-employment physical, drug test and background check. | An Equal Employment Opportunity Employer



## Service Techs Needed



Responsible for  
diagnosing and repairson  
various types of material  
handling and Construction  
equipment

Lift Truck Service Center is Arkansas' premier supplier of construction equipment and material handling vehicles. We offer new and used equipment, parts, rentals, and service.

At Lift Truck Service Center, we are dedicated to providing the best service, which means hiring the top employees available in Arkansas. We are always on the hunt for new employees who are eager and ready to join our growing team.

**COMPETITIVE PAY & BENEFITS**  
Health, Dental, Vision, 401K,  
Paid Vacation and a Company Van

**Apply in Person:**  
**1211 ESI DRIVE SPRINGDALE, AR 72764**  
**Or Email: [Accounting03@ltsinc.com](mailto:Accounting03@ltsinc.com)**

Pre-employment drug test and background check  
An Equal Employment Opportunity Employer



McKee Foods Corporation,  
manufacturer of  
America's #1 snack cakes,  
located in Gentry, AR,  
is taking applications for:



**Nurse, PRN**

**Guaranteed one  
shift per week.**

**Required for position:**

- Arkansas license and one year of LPN experience
- CPR certified
- Ability to work multiple shifts

**We offer:**

- Competitive pay scale
- a work enviroment that is clean, safe, drug free and tobacco free.



Apply at:  
[mckeefoods.com](http://mckeefoods.com)  
or scan the QR Code:



\*\*EOE, including disability/veterans\*\*



# Now Hiring!

## General Helpers

## Experienced Welders

- Stick
- Mig
- Tig
- Pipe
- Structural
- Flux Core

**Full Time  
Positions  
Benefits Package  
Available**

**Must pass welding test.**

## Employment Requirements

- Clean driving record, that means no moving violations, DUI's
- Pay based on position/experience
- Stable Work History
- Must be at least 21
- Criminal background checks and drug screens performed on all potential employees

## Ways to join the Mid-South Steam Boiler Team:

Email Resume with references to:

**jobs@midsouthboiler.com**

**Apply Online:**

**midsouthboiler.com**

**Fax: 479-262-6446**

EOE



WestRock is a leading global packaging company and provider of paper and packaging solutions in global consumer and corrugated markets.

We are currently taking applications for:

## Machine Operators

**Starting Pay: \$15.61**

**Position Pay: \$17.06 - \$20.28**

Manufacturing experience preferred but not required, High School Diploma or GED required. Must be available to work any shift assigned (3 shift operation). Must be available for daily and/or weekend overtime as required.

## Maintenance Electrical Tech I/II

**Position Pay: \$26.76 - \$31.22**

High School Diploma, GED, further education in Maintenance technology. Testing required to qualify. This is a Multi-Craft position experience required.



## On-Site Job Fair

**Oct. 13 & Oct. 14**

**8 am - Noon & 2 pm - 6 pm**

**WestRock**

**2021 S. 5th St., Rogers, AR 72758**

Masks are required to enter the facility.

*Competitive Benefits including, Medical/Dental/Vision/401K/Employee Stock purchase plan and other offerings.*

For more information and to apply go to:

**westrock.com/careers**

WestRock Company is an Equal Opportunity Employer committed to creating and maintaining a diverse workforce: Minorities/Females/Disabled/Veterans





**\$\$ BONUS PROGRAMS \$\$**

RETENTION BONUS EARNING POTENTIAL:

**UP TO \$2000**

REFERRAL BONUS EARNING POTENTIAL:

**UP TO \$2000**

WEEKLY PERFECT ATTENDANCE BONUS:

**\$200**

**WE Are Now Hiring:**

**Day & Night Shift Production Positions**

**NEW Pay Rates starting at: \$14.90 up to \$15.40!**

**\$1.00 Pay Increase after 90 days!**

**\$1.00 Shift Premium!**

**APPLY ONLINE TODAY AT:**

**careers.butterball.com**

Don't have a computer at home?

Apply onsite using our computers | Mon.- Fri., 9 a.m.-4 p.m.

**1294 N. College Street, Huntsville, AR | 479-738-2151**

EOE including Disability/Vets.



- Machine Operators/Operadores de Maquina
- Extrusion Operators/Operador de Extrusión
- Maintenance Techs/Mecánicos
- Quality Techs/Control de Calidad
- General Labor/Producción General

**We Offer/Ofrecemos:**

- 3 1/2 Day Work Week/Semana de 3 dias y medio
- Competitive Wages & Benefits/Pago y Beneficios Competitivos
- Bonus Earning Potential/Potencial de Bonos
- Day and Night Openings Posiciones de Dia y Noche
- Advancement Opportunities/Oportunidades de Crecimiento



**MoistureShield.**

COMPOSITE DECKING

**Apply online/Aplique en línea en:**

**https://jobs.crh.com**

**Search/ Busque: "MoistureShield"**

**Apply onsite/ Aplique en Persona:**

**Mon/Lunes – Fri/Viernes: 9 am – 4 pm**

**801 N. Jefferson St.**

**Springdale, AR 72764**

**479-750-1299**

**Equal Opportunity Employer and Drug Free Workplace**



**WE ARE HIRING**

Join our team in Bentonville, AR!

**We are hiring for several positions in Embroidery and Warehouse.**

These are Full Time Regular positions that are eligible for benefits after 60 days of employment. *Eligible for monthly production bonuses!* All applicants must pass background check and drug screen.



**For full job descriptions and to apply, please visit:**  
**www.outdoorcap.com/careers**

Outdoor Cap is an equal opportunity employer.



For 29 years, Petra Allied Health has kept its tuition low and its classes focused solely on preparing students for entry level healthcare positions.

**Classes We Offer**

- |                          |                                          |
|--------------------------|------------------------------------------|
| Medical Assistant        | Dental Assistant                         |
| Nursing Assistant        | Electrocardiograph Technician            |
| Phlebotomy Technician    | Limited Licensed Radiologic Technologist |
| Medical Billing & Coding | Optometric Assistant                     |
| Pharmacy Technician      | Veterinary Assistant                     |

PetraAlliedHealth.com | 479-750-9876  
Licensed by Arkansas Division of Higher Education



**NOW  
HIRING**

**Caregivers**

For our 59 apartment Assisted Living Memory Care.

**12-hour day and night shifts are available.**

- Perform various resident care activities and related nonprofessional services essential to caring for personal needs and comfort of residents in a Memory Care setting.
- Assist all residents with a high quality of personal care.
- Practice exceptional customer service in all interactions with residents, fellow employees, and guests.
- High School diploma preferred
- One year of experience working as a CNA/PCA/RA preferred.

*Apply In Person:*

**1967 W Truckers Drive  
Fayetteville, AR 72704**

*Or Online:*

**avenirseniorliving.com**

COVID-19 considerations: Everyone entering the building is screened for COVID-19 symptoms and all staff and visitors wear masks. EOE



**Lassonde**

**LASSONDE PAPPAS  
AND COMPANY, INC.**

A world leader in the production of fruit juice and related products, **Now Hiring in ALL DEPARTMENTS** in our **Springdale, AR facility:**

**Production/Batching/Warehouse**

- Starting Pay: \$15/hr 50 cent increase after 90 days
- 6pm-6am 3~4 shift pattern
- Benefits 1st of the month following 30 days of employment
- Vacation and PTO pro-rated for 2021

**NOW OFFERING: \$1000 SIGN ON BONUS  
THROUGH 12/31/2021!**

**Apply online:**

**https://lassondepappas.com/careers**

EEO/AAP



**NOW HIRING!  
Springdale  
Public Schools**

is now accepting applications for  
Part-Time and/or Full-Time



**BUS DRIVERS**

- 8 paid holidays
- Teacher Retirement benefits available for full-time employees.
- Other duties may be available with additional pay.
- **Paid Training is available.**

**Beginning Drivers starting pay \$71.47 per day  
(w/no exp.)**

*Refer to transportation salary schedule online for  
complete pay scale*

Apply in person at 1612 E. Emma Ave, Springdale, AR 72764  
Or applications are available online:

**apply.sdale.org**

**Click the Apply Now tab - Bus Driver Position**

Or call Transportation Dept. for more info @ 479-750-8830



**COOKS VENTURE**  
THE FUTURE OF FOOD IS REGENERATIVE

**JOB OPENINGS IN**  
**JAY** OKLAHOMA

# \$1,500

## SIGN & STAY BONUS

**\$300** FIRST FULL PAY PERIOD + **\$100** PER WEEK FOR 12 WEEKS



**STARTING RATE:**  
**\$18-\$20**

(including attendance incentive)



SCAN ME

**APPLY NOW**

[cooksventure.com/pages/careers](https://cooksventure.com/pages/careers)

**L A Z B O Y**

**¡ÚNETE!**  
**¡AQUÍ HAY TRABAJO!**  
**2do TURNO**

- Pago de Incentivo por equipo.
- Excelente ambiente laboral.
- Grandes beneficios para ti.

**¡VEN A ENTREVISTA!**

STARTING PAY

# \$14.26

PER HOUR




**JOIN US!**  
**WE'RE HIRING!**  
**2nd SHIFT**

- Incentive team pay.
- Comfortable working environment.
- Great benefits package.

**ON SITE INTERVIEWS!**

**2601 N. Country Club Rd. Siloam Springs, AR 479-215-4336**

GET YOU ONE OF THEM FANCY LAWYERS

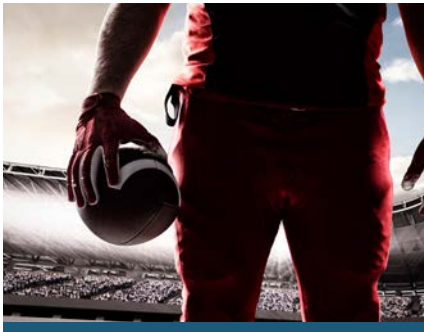


*the*  
**MOST INTERESTING LAWYERS**  
*in Northwest Arkansas*

**MOSTYN PRETTYMAN**  
PLLC  
[arklawyers.com](http://arklawyers.com)

# NIL NAME, IMAGE AND LIKENESS

We're a full service sports marketing agency. Let us help your brand take advantage of athlete endorsement opportunities using NIL!



866-641-7692  
martinez-agency.com  
alex@martinez-agency.com

**Alex Martinez**  
CEO / SPORTS AGENT

## Break into the retail industry as a Certified Retail Analyst

- » Improve analytical skills to advance in your career
- » Over 87% job placement rate
- » Well respected program in Walmart and the Walmart supplier community

Semester begins October 18.

**Learn more: [www.nwacc.edu/CRA](http://www.nwacc.edu/CRA)**



WORKFORCE &  
ECONOMIC DEVELOPMENT



**WEDNESDAY, OCT. 6<sup>TH</sup> | 2021**  
**10:00 A.M. - 3:00 P.M.**

**FRISCO STATION MALL | 100 N. DIXIELAND RD., ROGERS**

The Chamber's **Northwest Arkansas Fall Job Fair** is the largest and longest running Job Fair in Arkansas and is **FREE to Job Seekers**. This is a great opportunity for businesses to get a jump start on hiring for the fall and winter seasons as well as full-time employment opportunities. Availability will be on a first-come first-served basis so reserve your booth today to ensure access to many job seekers expected to attend.

**JOB-SEEKERS | BRING YOUR RESUMES TO HAND OUT TO POTENTIAL EMPLOYERS**

For more information or to register a booth visit **ROGERSLOWELL.COM**



[info@noark.org](mailto:info@noark.org) | 479-305-2466

Affiliate of the Society of Human Resource Management (SHRM)

Membership benefits include:

Monthly program meeting featuring top local and national speakers

Learning labs

Seminars

Networking events

And More!

Join us @

[www.noark.org](http://www.noark.org)



**TAHRA**

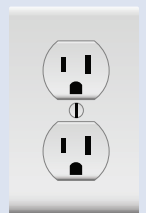
Tulsa Area HUMAN RESOURCES Association

[www.tahra.org](http://www.tahra.org) • [admin@tahra.org](mailto:admin@tahra.org) • 918-344-4622

**GET PLUGGED IN!**

- Affiliate of the Society for Human Resource Management (SHRM)
- With 500+ members, we are the largest HR chapter in Oklahoma
- Membership benefits include:
  - Monthly program meetings featuring top local and national speakers
  - Learning labs
  - Seminars
  - Networking events
  - And more!

JOIN US @ [TAHRA.ORG](http://TAHRA.ORG)



Lindsey Management Co., Inc. provides management services to the multifamily apartment properties listed. Thinking about a new career; property management may be a good field to consider.



We are currently hiring assistant managers, leasing consultants & maintenance techs at various properties. These positions are key to the successful management of apartment properties and are positions that can lead to management. Please visit our website. EOE

[www.LindseyMgmt.com](http://www.LindseyMgmt.com)

Go to Career Opportunities > Apartment Employment > Apply Now. 



**ARKANSAS - NORTHWEST ARKANSAS**

<b>FAYETTEVILLE</b>	
Appleby .....	479.443.9258
Chestnut II .....	479.521.6895
The Cliffs I .....	479.582.2540
The Cliffs II .....	479.444.0400
Cornerstone I/II .....	479.443.3507
Crafton Place/Starrfire .....	479.521.6895
Crossover Terrace .....	479.443.9744
East Oaks/Oakshire I/II .....	479.443.7278
Fair Park .....	479.587.9395
The Greens at Lakeside Village .....	479.442.7663
Lakeside Village .....	479.443.9022
The Links at Fayetteville .....	479.966.4340
The Greens at Fayetteville .....	479.966.4340
The Fairways at Fayetteville .....	479.966.4340
Markham Hill .....	479.443.9333
Paradise View .....	479.521.8299
The Park I/II .....	479.443.9804
Shiloh .....	479.442.4384
Southern View I/II .....	479.443.6698
Stearns Street/Vantage Center .....	479.527.9851
Valley Lake .....	479.444.9744
<b>SPRINGDALE</b>	
Bridgestone .....	479.751.8866
Eastwood .....	479.927.0676
Johnson Meadows .....	479.756.1312
The Links at Springdale I/II .....	479.750.1515
Station .....	479.756.1312
Sunset I/II/Holcomb .....	479.750.3030
Walnut Tree .....	479.751.8866
West End Place/Pleasant Point .....	479.750.3030
<b>LOWELL</b>	
The Links at Lowell .....	479.770.2100
<b>ROGERS</b>	
Brentwood I/II .....	479.631.5800
Briarwood .....	479.631.5800
Doubletree I/II .....	479.631.5800
Edgewood .....	479.631.5800
The Fairways at Lost Springs .....	479.621.0277
The Greens at Lost Springs .....	479.631.6515
The Greens on Blossom Way .....	479.631.2024
Lost Springs .....	479.621.9399
Turtle Creek I/II/Park .....	479.631.1444
<b>BENTONVILLE</b>	
Copperstone I/II .....	479.271.9300
Delmar .....	479.273.5283
The Links at Bentonville .....	479.271.0205
The Links at Rainbow Curve .....	479.657.6446
The Trails at Bentonville .....	479.657.6633
Moberly Manor I/II .....	479.273.2540
Moberly Place .....	479.273.3533
Walton Crossing .....	479.268.4237
<b>SILOAM SPRINGS</b>	
Spring Valley I/II .....	479.549.3213

**ARKANSAS—REST OF STATE**

<b>BENTON</b>	
Dogwood Lakes .....	501.794.3000
Fountain Lakes .....	501.778.3134
The Greens at Longhills .....	501.860.6968
<b>BRYANT</b>	
The Fairways at Hurricane Creek .....	501.847.7747
The Greens at Hurricane Creek .....	501.847.2586
The Lakes at Hurricane Creek .....	501.847.6178
<b>CONWAY</b>	
Centennial Valley I/II .....	501.513.2555
The Fairways at Nutters Chapel .....	501.205.8230
Fox Run .....	501.327.8739
Germantown .....	501.329.0767
The Greens at Nutters Chapel .....	501.450.7056
Lake Pointe .....	501.336.0900
The Links at Cadron Valley .....	501.513.0000
Salem Park .....	501.329.5900
Westlake .....	501.513.9392
<b>FORT SMITH</b>	
The Links at Fort Smith .....	479.648.8080
Pike Place .....	479.782.6686
<b>HARRISON</b>	
The Links at Harrison .....	870.365.3620
<b>JONESBORO</b>	
Gladiola Estates/Gladiola Manor .....	870.933.8333
The Greens at Jonesboro .....	870.275.6525
The Links at Jonesboro .....	870.275.6525
Park Lake .....	870.933.8333
<b>LITTLE ROCK</b>	
The Links at Eagle Hill .....	501.407.9088
Eagle Hill .....	501.455.8818
Eagle Nest .....	501.407.0567
Westwood I/II .....	501.455.8862
<b>NORTH LITTLE ROCK</b>	
The Greens at the Rock .....	501.753.1200
The Links at the Rock .....	501.812.5020
<b>MARION</b>	
The Fairways at Marion I/II/III .....	870.739.4949
The Greens at Marion I/II .....	870.739.6300
<b>PARAGOULD</b>	
Silverwood .....	870.239.3815
<b>RUSSELLVILLE</b>	
Shadow Lake .....	479.967.5584
Spring Lake I/II .....	479.858.7079
<b>SEARCY</b>	
Meadow Lake I/II .....	501.268.3355
<b>SHERWOOD</b>	
The Links at Sherwood .....	501.833.8010
<b>TEXARKANA</b>	
The Links at Texarkana .....	870.773.2295
<b>ALABAMA</b>	
<b>TUSCALOOSA</b>	
The Greens at Tuscaloosa I/II .....	205.342.3339
The Links at Tuscaloosa .....	205.247.9978
<b>AUBURN</b>	
The Greens at Auburn .....	334.821.4061
The Fairways at Auburn I/II .....	334.209.1850

**KANSAS**

<b>DERBY</b>	
The Greens at Derby I/II .....	316.788.3060
The Fairways at Derby .....	316.788.1028
The Links at Kansas .....	785.841.3868
The Links at Manhattan .....	785.539-8448
<b>SHAWNEE</b>	
The Greens at Shawnee .....	913.422.8295
<b>MISSISSIPPI</b>	
<b>OXFORD</b>	
The Links at Oxford .....	662.513.4949
<b>CANTON</b>	
The Greens of Madison County .....	601.391.3464
The Links of Madison County .....	601.859.5551
The Trails at Madison County .....	601.436.4707
<b>STARKVILLE</b>	
The Links at Starkville .....	662.338.1801
<b>MISSOURI</b>	
<b>JOPLIN</b>	
Tanglewood .....	417.623.3336
<b>SPRINGFIELD</b>	
The Greens at Springfield .....	417.833.3261
<b>GRANDVIEW</b>	
Grand Summit Apartments .....	816.331.3968
The Fairways at Grand Summit I/II .....	816.425.4059
<b>COLUMBIA</b>	
The Links at Columbia .....	573.474.4399
<b>OKLAHOMA</b>	
<b>BIXBY</b> Tulsa suburb	
The Links on Memorial I/II .....	918.369.6055
<b>BROKEN ARROW</b> Tulsa suburb	
The Greens at Broken Arrow I/II .....	918.355.0802
The Greens at Broken Arrow III .....	918.355.0802
The Greens on Aspen .....	918.872.8899
<b>CLAREMORE</b>	
Deer Run .....	918.343.7326
<b>OWASSO</b>	
The Greens at Owasso I/II .....	918.274.4800
The Greens at Owasso III/IV .....	918.376.4244
<b>STILLWATER</b>	
The Links at Stillwater .....	405.372.9910
The Greens at Stillwater .....	405.372.9910
<b>OKLAHOMA CITY</b>	
The Greens at Lake Overholser .....	405.494.9888
The Greens at Oklahoma City .....	405.602.5208
The Links at Oklahoma City .....	405.936.9211
The Trails at Rockwell .....	405.604.3583
<b>NORMAN</b> OKC	
The Links at Norman .....	405.321.3430
The Greens at Norman .....	405-321-3430
<b>EDMOND</b> OKC	
The Greens at Coffee Creek .....	405.216.3642
<b>MOORE</b> OKC	
The Greens at Moore .....	405.794.0062
The Fairways at Moore .....	405.895.6127
<b>YUKON</b> OKC	
The Links at Mustang Creek .....	405.577.5151
The Greens at Mustang Creek .....	405.577.5151



***\$3,500 Sign-On Bonus***

## **Drive Sweet Success with America's Leading Snack Cake Brand!**

McKee Foods Corporation, manufacturer of America's # 1 snack cakes, Little Debbie® snack cakes, located in Gentry, AR, is taking applications for:

# **Long Haul Drivers**

- Experienced OTR driver with at least 18 months OTR experience
- Safe driving record
- Current Class A CDL
- Current DOT physical
- At least 23 years old
- Willing to drive team
- Don't mind a physically demanding job



*As a driver on our team, you will enjoy perks like:*

- Stable, competitive pay scale
- Excellent benefits, including medical, dental, 401(k), profit-sharing and fitness center
- A work environment that is clean, safe and tobacco-free
- Promotion opportunities for high performers

*Apply on-line at:*

**[mckeefoods.com](http://mckeefoods.com)**

*or scan the QR Code →*



\*\*EOE, including disability/veterans\*\*