

# JOB GUIDE

Jobs in Northwest Arkansas • Southwest Missouri • Tulsa Metro

**\$3,500 Sign-On Bonus**



*Drive Sweet Success with  
America's Leading Snack  
Cake Brand!*

**WE'RE  
HIRING**

## Long Haul Drivers

- Experienced OTR driver with at least 18 months OTR experience
- Safe driving record
- Current Class A CDL
- Current DOT physical
- At least 23 years old
- Willing to drive team
- Don't mind a physically demanding job

McKee Foods Corporation  
Gentry, AR



*As a driver on our team, you will enjoy perks like:*

- Stable, competitive pay scale
- Excellent benefits, including medical, dental, 401(k), profit-sharing and fitness center
- A work environment that is clean, safe and tobacco-free
- Promotion opportunities for high performers



\*\*EOE, including disability/veterans\*\*

Apply on-line at: [mckeefoods.com](http://mckeefoods.com) or scan the QR Code

Issue

Volume 33 Issue 21  
Oct. 15 - Oct. 28, 2021

Advertise

[thejobguide.com](http://thejobguide.com)  
800-654-9776

*Free*

Woman Owned



# Now Hiring!

## General Helpers

## Experienced Welders

- Stick
- Mig
- Tig
- Pipe
- Structural
- Flux Core

**Full Time  
Positions  
Benefits Package  
Available**

**Must pass welding test.**

## Employment Requirements

- Clean driving record, that means no moving violations, DUI's
- Pay based on position/experience
- Stable Work History
- Must be at least 21
- Criminal background checks and drug screens performed on all potential employees

## Ways to join the Mid-South Steam Boiler Team:

Email Resume with references to:

**jobs@midsouthboiler.com**

**Apply Online:**

**midsouthboiler.com**

**Fax: 479-262-6446**

EOE



- Machine Operators/Operadores de Maquina
- Extrusion Operators/Operador de Extrusión
- Maintenance Techs/Mecánicos
- Quality Techs/Control de Calidad
- General Labor/Producción General

## We Offer/Ofrecemos:

- 3 1/2 Day Work Week/Semana de 3 dias y medio
- Competitive Wages & Benefits/Pago y Beneficios Competitivos
- Bonus Earning Potential/Potencial de Bonos
- Day and Night Openings Posiciones de Dia y Noche
- Advancement Opportunities/Oportunidades de Crecimiento



**MoistureShield**

COMPOSITE DECKING

**Apply online/Aplique en línea en:**

**https://jobs.crh.com**

Search/ Busque: "MoistureShield"

**Apply onsite/ Aplique en Persona:**

**Mon/Lunes – Fri/Viernes: 9 am – 4 pm**

**801 N. Jefferson St.**

**Springdale, AR 72764**

**479-750-1299**

Equal Opportunity Employer and Drug Free Workplace



**NOW HIRING!**  
**Springdale**  
**Public Schools**

is now accepting applications for  
Part-Time and/or Full-Time

**BUS DRIVERS**

- 8 paid holidays
- Teacher Retirement benefits available for full-time employees.
- Other duties may be available with additional pay.
- **Paid Training is available.**

**Beginning Drivers starting pay \$71.47 per day**  
(w/no exp.)

*Refer to transportation salary schedule online for complete pay scale*

Apply in person at **1612 E. Emma Ave, Springdale, AR 72764**  
Or applications are available online:

**apply.sdale.org**

*Click the Apply Now tab - Bus Driver Position*

Or call Transportation Dept. for more info @ **479-750-8830**



**JUVENILE DETENTION WORKER**

**Minimum Starting Salary: \$16.10 per hour**

At the Benton County Juvenile Detention Center, we take a different approach with juveniles who have been detained; we try to use a more therapeutic approach and work with these young people to help them realize their potential and make positive changes that carry over to their lives outside the facility. The JDC staff are a dedicated group of people who want young people to succeed. Our staff is specially trained and are positive role models by setting good examples through effective teamwork and mentoring.

**For more information or to apply visit**  
**Benton County Career Center at:**

<https://bentoncountyar.gov/human-resources/employment/>

EOE



Taking applications for:  
**Maintenance Tech**  
**3rd Shift**

**Weekly bonuses**

**+**

**\$1,200 Sign-On Bonus!**

**Cargill Offers:**

- Competitive Wages & Weekly Bonus Programs
- Overtime available
- Paid vacation and holidays
- Full Benefit package including medical, dental, vision and 401K

**Apply online:**

**cargill.com/springdale**

Cargill is an Equal Opportunity Employer, including Disability/Vet. Drug Free Employer



**\$1,200**

**Sign-On Bonus!**

**Weekly Attendance Bonus!**

**New Pay Rates!**

**Ranging from:**

**\$15.10/hr - \$18.25/hr**



**Cargill Offers:**

- Competitive Wages & Weekly Bonus Programs
- Overtime available
- Paid vacation and holidays
- Full Benefit package including medical, dental, vision and 401K

**Apply online:**

**www.cargill.com/springdale**

Cargill is an Equal Opportunity Employer, including Disability/Vet. Drug Free Employer

# National Holiday Hiring Event

## 'TIS THE SEASON FOR HIRING

Share your love for the outdoors.  
Help us gear up for the holidays.




### Seasonal & Regular Positions available!

Apply online at: [basspro.com/careers](https://basspro.com/careers)  
(walk-ins welcome)

- Merchandise discounts up to 45%
- Benefits & Perks







Equal Opportunity Employer. Drug-Free Workplace



## Do you know someone who has a caregiver's heart, but lacks the training?

### FREE home caregiver classes!

Learn basic home safety, personal care and how to care for someone living with dementia. This training satisfies the hours required by law in Arkansas for caregivers being paid to care for a person 50 years or older in the home.

**Next class: Oct. 25 through Nov. 12**



Donald W. Reynolds Institute on Aging

**SCHMIEDING CENTER FOR SENIOR HEALTH AND EDUCATION**

**To register, visit [schmiedingcenter.org](https://schmiedingcenter.org) or call (479) 751-3043**



## \$\$ BONUS PROGRAMS \$\$

**RETENTION BONUS EARNING POTENTIAL:**  
**UP TO \$2000**

**REFERRAL BONUS EARNING POTENTIAL:**  
**UP TO \$2000**

**WEEKLY PERFECT ATTENDANCE BONUS:**  
**\$200**

### WE Are Now Hiring:

#### Day & Night Shift Production Positions

**NEW Pay Rates starting at: \$14.90 up to \$15.40!**  
**\$1.00 Pay Increase after 90 days!**  
**\$1.00 Shift Premium!**

## APPLY ONLINE TODAY AT:

# careers.butterball.com

Don't have a computer at home?  
Apply onsite using our computers | Mon.- Fri., 9 a.m.-4 p.m.  
**1294 N. College Street, Huntsville, AR | 479-738-2151**

EOE including Disability/Vets.




Currently taking applications for:

## Heavy Equipment Operators (HEO)

- Operates heavy equipment in the construction, improvement, and maintenance of county roads.
- Operates road department equipment including dump trucks, loaders and graders.

## Juvenile Detention Officers

- The Juvenile Detention Officer, serves the County by efficiently supervising and maintaining discipline, and meeting these needs of the residents in accordance with federal and state law.
- Work effectively with all divisions and departments and the public.
- Must meet minimum requirements under state law for Juvenile Detention Standards Training (40 hours of training).

**For more information or download an application:**  
**[washingtoncountyar.gov](https://washingtoncountyar.gov)**

All employees are hired through the:  
Washington County | HR Department  
280 North College, Suite 510 | Fayetteville, AR 72701  
479.973.8465

Applications accepted in person  
Monday - Friday between 8 am and 4 pm  
*Females and minorities encouraged to apply.*

EOE



**Circle of Life seeking experienced, compassionate candidates to join our TEAM!**

- Admissions RN (PT) (FT Outpatient)
- After Hours RN (FT)
- After Hours RN (PT)
- Chaplin (FT & PRN)
- CNA Inpatient (PRN & FT)
- CNA Outpatient (FT)
- LPN Weekend (PT)
- Night Call Nurse (PRN)
- RN Case Manager
- Social Worker - Care Navigation (FT)
- Social Worker Inpatient (PT)
- Staff RNs (Full Time & PRN)
- Unit Administrative Assistant (PRN)
- Weekend LPN (PT)

**CIRCLE of LIFE**  HOSPICE

Apply online at: [nwacircleoflife.org](http://nwacircleoflife.org)  
 Contact Human Resources at: 479-872-3366 or 479-872-3397

Earlene Howard Hospice Home  
 901 Jones Road | Springdale, AR 72762

Marie & John Carr Hospice Home  
 1201 NE Legacy Parkway | Bentonville, AR 72712  
 Drug Free Workplace Equal Opportunity Employer

**Are you a compassionate person, who loves helping others?**

 **Right at Home** We are looking for **YOU!**  
 In Home Care & Assistance

**Compassionate Caregivers needed to work in the NW AR Region!**

- Flexible Schedules & Locations
- Incentive time off
- Competitive wages
- Caregiver referral bonuses
- 401k/Health/Dental/Vision Insurance
- Unique Assignments
- Specialized training
- Direct Deposit

**\$11 - \$15 per hr.** *No Experience Required*  
 Depending on assignment *Paid Training Provided!!*

Retired & newly graduated healthcare professions, RNs, PCAs and CNAs encouraged to apply!

**WALK-IN WEDNESDAY!**  
**APPLY IN PERSON AND INTERVIEW ON THE SPOT!**

**Apply in person:**  
 3190 Bella Vista Way | Bella Vista, AR 72714  
 Contact us @ 479-855-6000 for more information

**rah-ar.com**

**Full Time & Part Time Assignments**



**Highest Pay in the Area!**

**RNs, LPNs, CNAs & Home Care Aides**

*Great Pay and Benefits:*  
 Pay Advances • Direct Deposit • Uniform Discounts  
 • Flexible Schedules • Health Insurance and much more!

 Apply online 24/7 at [www.prnmedstaff.net](http://www.prnmedstaff.net)

*Or Apply In Person:*  
 4400 S. Thompson St., Springdale, AR 72712  
 479.756.8701

*Providing opportunities for the Best Employees Since 1990!*

**If you have a love for helping others, We want to talk with you!**

**Become a Personal Care Assistant**

- Earn bonuses
- Have paid holidays
- Work up to **40 hours per week**
- Have a flexible part-time work schedule
- Participate in voluntary benefits programs - Including participation in 403(b) retirement plans.
- This is a Safety-Sensitive job for purposes of the AR M.M.A.



**Offering ONLINE Training!**



We provide **FREE 40-hour Personal Care Training ONLINE!** Check our website for more information.

Apply on-line:  
**[aanwar.org/Employment](http://aanwar.org/Employment)**

 EEO | Employer/AA/M/F/Vet/Disabled  
 Employment subject to background check and drug screening.



Job Opportunities  
[workatsimmons.com](http://workatsimmons.com)

**Prepared Foods**

Gentry, AR  
Southwest City, MO  
Van Buren, AR

**Day & Night Shift**

- Production
- Maintenance

**Prepared Foods**

Gentry, AR

**New Shift**

- Monday - Thursday
- 4pm - 3am
- 1hr break per day

**Animal Nutrition**

Siloam Springs, AR  
Southwest City, MO

**Day & Night Shift**

- Utility Production
- Maintenance
- Operators

**Pet Food**

Siloam Springs, AR

**Day & Night Shift**

- Utility
- Maintenance
- Refrigeration



**Part-Time Opportunities Available**

Multiple shifts + Including Saturdays only

**Siloam Springs & Gentry, AR Locations**

Starting Pay: \$15.50 - \$19.75/hr

**Southwest City, MO Locations**

Starting Pay: \$17.25 - \$19/hr

Hiring Bonus: +\$.50/hr for Night Shift *(all locations)*

**Better Basic Benefits:**



**Build Your Paycheck**

- Competitive Pay + Hiring Bonus
- Referral Bonuses
- First 6 Months = Vacation Pay
- Vacation Match (Currently Employed)



**Simmons Care Clinics**

- High-Quality Healthcare
- Team Members & Families
- Free Generic Prescriptions



**Education Financial Aid**

- Support For GED to PhD.
- On-The-Job Training
- Professional Development

**Apply Online or In Person Same-Day Hiring**

**NWA Hiring Center**

2998 Hwy 412 East, Ste 80  
Siloam Springs, AR 72761  
**(844) 400-9357 Option 3**

**SWC Hiring Center**

10700 S. State Hwy 43  
Southwest City, MO 64863  
**(417) 762-3271 Option 3**

**Fort Smith Hiring Center**

4900 Rogers Ave., Suite 103 D  
Fort Smith, AR 72903  
**(479) 262-5390 Option 3**

See enhanced safety measures here: [simmonsfoods.com/covid19-measures](http://simmonsfoods.com/covid19-measures)

EEO

# NWACC Adult Education Offers

- ▶ High School Equivalency (GED®)
- ▶ College Prep for Math
- ▶ College Prep for Literacy
- ▶ English as a Second Language (ESL)
- ▶ Citizenship Classes
- ▶ Career Education

**Online instruction available.**



**NWACC ADULT EDUCATION**

NORTHWEST ARKANSAS  
COMMUNITY COLLEGE

Shewmaker Center for Workforce Technologies  
1000 S.E. Eagle Way, Bentonville, AR 72712

*NWACC Adult Education provides equal access to all programs and activities. Must be 18 years or older to participate. Paid for with funds from the Arkansas Department of Career Education, Adult Education Division.*

[nwacc.edu](http://nwacc.edu) | 479.986.6911

## BREAK INTO THE RETAIL INDUSTRY AS A CERTIFIED RETAIL ANALYST

- » Improve analytical skills to advance in your career
- » Over 87% job placement rate
- » Well respected program in Walmart and the Walmart supplier community

Have an advanced degree and prior learning experience? **You may be eligible to skip a pre-requisite course and obtain certification in less than a year.**

Learn how you can save time and money by emailing [retail@nwacc.edu](mailto:retail@nwacc.edu).



**WORKFORCE &  
ECONOMIC DEVELOPMENT**

[www.nwacc.edu/CRA](http://www.nwacc.edu/CRA)



CRH is the leading local distributor for products such as rock and asphalt as well as a road construction company. Many of our positions are designed to train you on the job with little to no experience required. APAC, Standard Materials and Arkhola are part of the CRH family.

**We're HIRING** **APAC/SMG - AR Openings for NW AR**  
 Contact: (479) 684-5005 or (479) 263-2177 for details.  
 Se Habla Español

- Construction
- Aggregates
- Ready Mix Local Drivers (CDL)
- Field
- Office Personnel

**BONUS** **Potential Sign On Bonus of up to \$1,500!!!!**

**Opportunities Range from Entry Level to Experienced Professionals**

**Arkhola Openings for Fort Smith, Arkansas** **Potential Sign On Bonus of up to \$1,500!!!!**  
 For more information contact Marsha Hayes at: (479) 788-6365.

- Asphalt Ground Laborer
- QC Lab Tech
- Ready Mixer Drivers
- Heavy Equipment Operator
- 2nd Shift Quarry Workers

**APAC Openings for Muskogee, Oklahoma** **Potential Sign On Bonus of up to \$1,500!!!!**  
 For more information contact Marsha Hayes at: (479) 788-6365.

- Asphalt Superintendent
- Construction Heavy Equipment Operator
- Dirt Crew Foreperson
- Class A Heavy Haul Truck Drivers
- Construction Laborer
- Ready Mixers Drivers
- Shop Mechanic

**APAC Oklahoma Openings for Tulsa, Oklahoma**  
 For more information contact Lisa Chapman at: (918) 556-2236.

- Asphalt Plant Mechanic
- CDL A Dump Truck Driver
- Construction Laborer
- Construction Heavy Equipment Operator
- Concrete Finisher
- Facilities Maintenance
- Quarry Equipment Operator
- Quarry Maintenance
- Quarry Worker

**SMG - Oklahoma Openings for Tulsa, Oklahoma**  
 For more information contact Lisa Chapman at: (918) 556-2236.

- Diesel Mechanic
- Class A Bulker Driver
- Class A Dump Driver
- Plant Operator- Vinita, OK and Claremore, OK
- Ready Mix Drivers

You may apply online for any of the above positions and see more listings at:  
<https://www.crhamericas.com>

**Competitive Wages, Benefits and Excellent Safety Culture!**  
 APAC Central Inc. is an Affirmative Action and Equal Opportunity Employer





# BERRY STREET

## NUEVO PAGO INICIAL!

1er Turno \$15.20/hora

2º Y 3er Turno \$17.20/hora

Aplique en linea:

[www.tysonfoodscareers.com](http://www.tysonfoodscareers.com)

Tyson es un Empleador con Igualdad de Oportunidades que practica Acción Afirmativa. Todos los aspirantes calificados se tomarán en cuenta sin hacer distinción alguna hacia la raza, origen nacional, color, religión, edad, genética, sexo, orientación sexual, identidad de género, incapacidad o estado de veterano.

**NOTA:** La seguridad es la máxima prioridad en Tyson. A partir del 1 de Septiembre de 2021, los solicitantes exitosos contratados en esta instalación deben estar completamente vacunados contra COVID-19 y proporcionar una prueba de vacunación antes de comenzar a trabajar.



For 29 years, Petra Allied Health has kept its tuition low and its classes focused solely on preparing students for entry level healthcare positions.

### Classes We Offer

Medical Assistant

Dental Assistant

Nursing Assistant

Electrocardiograph Technician

Phlebotomy Technician

Limited Licensed Radiologic Technologist

Medical Billing & Coding

Optometric Assistant

Pharmacy Technician

Veterinary Assistant

[PetraAlliedHealth.com](http://PetraAlliedHealth.com) | 479-750-9876

Licensed by Arkansas Division of Higher Education

# Drivers Needed for NWA Routes



Full and Part-Time Routes Available

### Excellent Benefits:

Health, Vision, Dental, Paid Holidays,  
Paid Vacations, Retirement with  
employer match

Women, Minorities and Retirees are encouraged to apply

Apply today at: [www.ozark.org](http://www.ozark.org)



For more information call  
479-361-8741 or 479-361-8752

or email: [thill@ozark.org](mailto:thill@ozark.org)

2423 E Robinson, Springdale, AR

Pre-employment physical, drug test and background check. | An Equal Employment Opportunity Employer



ONE FAMILY.  
ONE PURPOSE.

Bear Hollow Farm  
340 Cobb Lane  
Pineville, MO 64856

Three Springs Farm  
17804 E 606 Road  
Rose, OK 74364

# A great place to work!

**Now Accepting Applications Online!**  
**Aceptando solicitudes en línea**

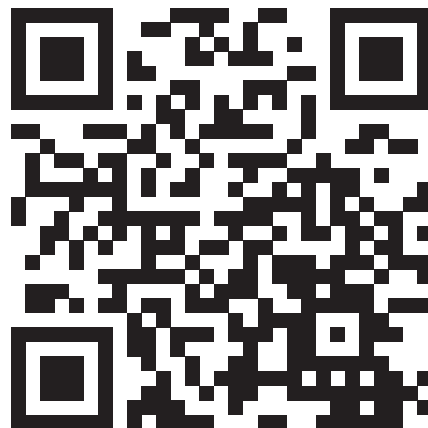
Starting pay begins at \$15.45/hr + shift incentives

Pago inicial comienza a \$15.45/hr

Más incentivos por turno

*Eligible for 9 paid holidays upon hire./Employee Recognition Program/Medical/Dental/Vision/Pharmacy/Life Insurance/Stock/401k Benefits*

*Elegible para 9 días festivos pagados al momento de la contratación. / Programa de reconocimiento de empleados / Médico / Dental / Visión / Farmacia / Seguro de vida / Acciones / Beneficios 401k*



[https://www.cobb-vantress.com/en\\_US/careers/](https://www.cobb-vantress.com/en_US/careers/)

Cobb-Vantress is an Equal Opportunity/Affirmative Action Employer.

All qualified applicants will be considered without regard to race, national origin, color, religion, age, genetics, sex, sexual orientation, gender identity, disability or veteran status.



The University of Arkansas, Fayetteville offers employment opportunities in the fields of:  
Maintenance ▪ Custodial ▪ Computer Technical ▪ Clerical

**Current Opportunities Include:**

- Accountant II (Three Open Positions)
- Accounting Manager/Supervisor
- Administrative Specialist III
- Broadcast Engineer Assistant
- Coordinator of Housekeeping
- Custodial Worker (Four Open Positions)
- Event Support Specialist
- Fiscal Support Manager – Mechanical Engineering
- Graduate Assistant and Payroll Accounting Coordinator
- Heavy Equipment Operator
- Human Resources Specialist
- Institutional Services Assistant (Two Open Positions)
- International Employee Services Specialist
- Landscape Specialist
- Service Assistant (Current and Anticipated Future Openings)

The University of Arkansas provides one of the most comprehensive and competitive benefit packages in the region.

- |                     |                          |   |
|---------------------|--------------------------|---|
| • Health Coverage   | • Paid Holidays          | • Short & Long Term Disability          |
| • Dental Coverage   | • Sick Leave             | • Employee Assistance Program and More! |
| • Prescription Drug | • Vacation Leave         |   |
| • Retirement        | • Catastrophic Leave     |   |
| • Basic Life        | • Family & Medical Leave |   |
| • Optional Life     | • Vision                 |   |
| • Tuition Reduction |                          |   |



UNIVERSITY OF ARKANSAS

The University of Arkansas has an in-house temporary employment staffing service called RazorTemps. Apply to this posting if you are interested in being considered for temporary employment opportunities. These positions vary in length and often provide a 'foot in the door' to permanent employment at the University.

The University of Arkansas recognized the challenge of balancing work with personal life, and we pro actively look for ways to help our employees do well at both aspects of their lives. This includes creating health insurance and retirement plans that work well; offering work-time options where possible; promoting career and personal development; and giving paid leave for holidays, illness, vacations, children's educational activities and military duty, among others.

As we strive to represent the best of public higher education, advance Arkansas and build a better world by providing transformational opportunities and skills, promoting an inclusive and diverse culture, nurturing creativity, and solving problems through research and discovery, the University of Arkansas provides excellent opportunities for professional service and that you can be a part of the worthwhile advancement of the University. We believe in fostering a collaborative and innovative culture among our diverse faculty staff and students that promotes a healthy balance.

To apply for above positions, please visit our website at:

<https://uasys.wd5.myworkdayjobs.com/UASYS>

For more information, please contact us at 479.575.5351.

The University of Arkansas is an Equal Opportunity-Affirmative Action Institution.



Lassonde

LASSONDE PAPPAS AND COMPANY, INC.

A world leader in the production of fruit juice and related products, **Now Hiring in ALL DEPARTMENTS** in our **Springdale, AR facility:**

**Production/Batching/Warehouse**

- **Starting Pay: \$15/hr 50 cent increase after 90 days**
- **6pm-6am 3~4 shift pattern**
- **Benefits 1st of the month following 30 days of employment**
- **Vacation and PTO pro-rated for 2021**

**NOW OFFERING: \$1000 SIGN ON BONUS THROUGH 12/31/2021!**

**Apply online:**

<https://lassondepappas.com/careers>

EEO/AAP



Southwest Transportation in Siloam Springs, AR is taking applications for:

**Local CDL Drivers**

**Starting Pay at \$20.75, with up to \$2000 Sign-On Bonus**

**Schedule:** Sunday-Friday as dispatched, including holidays and weekends.

**Hours:** Averaging at least 40 hours a week

**Position Summary:**

Cobb-Vantress has immediate openings for local egg and live haul drivers.

**Minimum Requirements:**

Valid Class A Commercial Driver's License, 1 year verifiable Class A CDL with clean safety record.

<https://www.cobb-vantress.com/careers>

Cobb-Vantress is an Equal Opportunity/Affirmative Action Employer. All qualified applicants will be considered without regard to race, national origin, color, religion, age, genetics, sex, sexual orientation, gender identity, disability or veteran status.



**COOKS VENTURE**  
THE FUTURE OF FOOD IS REGENERATIVE

**JOB OPENINGS IN**  
**JAY** OKLAHOMA

# \$1,500

## SIGN & STAY BONUS

**\$300** FIRST FULL PAY PERIOD + **\$100** PER WEEK FOR 12 WEEKS

**STARTING RATE:**

**\$18 - \$20**

(including attendance incentive)



SCAN ME

**APPLY NOW**

[cooksventure.com/pages/careers](https://cooksventure.com/pages/careers)

L A Z B O Y

¡ÚNETE!  
¡AQUÍ HAY  
TRABAJO!  
2do TURNO

STARTING PAY  
**\$14.26**  
PER HOUR

JOIN US!  
**WE'RE  
HIRING!**  
2nd SHIFT

- Pago de Incentivo por equipo.
- Excelente ambiente laboral.
- Grandes beneficios para ti.

- Incentive team pay.
- Comfortable working environment.
- Great benefits package.



¡VEN A ENTREVISTA!

ON SITE INTERVIEWS!

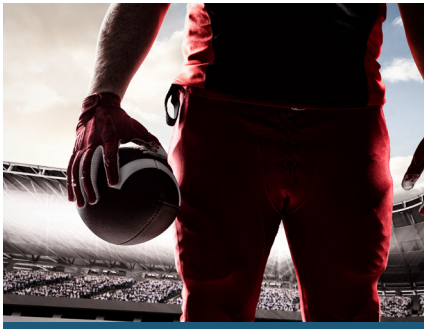
2601 N. Country Club Rd. Siloam Springs, AR

479-215-4336

# NIL

## NAME, IMAGE AND LIKENESS

We're a full service sports marketing agency. Let us help your brand take advantage of athlete endorsement opportunities using NIL!




**MARTINEZ AGENCY**

866-641-7692  
martinez-agency.com  
alex@martinez-agency.com



**Alex Martinez**  
CEO / SPORTS AGENT

# GEORGE'S<sup>®</sup>



## Increased Wages!

Starting wages between \$15 to \$20 per hour

We honor tenure from previous employer

Now hiring for a variety of positions

## \$2,000 Sign-On Bonus For:

- Live Haul Cage Repair
- Maintenance Tech
- QA Technician
- Refrigeration Tech
- Truck Shop-Diesel Mechanic
- Wastewater Tech

# Apply Today!

George's  
Employment &  
Training Center

901-A W. Robinson Ave.  
Springdale, AR  
479.927.7777

### 3 WAYS TO APPLY:

1. [joingeorges.com](https://www.joingeorges.com)
2. Text "Georges" to 85000
3. Scan Here to Apply



EOE/M/F/Disabled/Vet

Lindsey Management Co., Inc. provides management services to the multifamily apartment properties listed. Thinking about a new career; property management may be a good field to consider.



We are currently hiring assistant managers, leasing consultants & maintenance techs at various properties. These positions are key to the successful management of apartment properties and are positions that can lead to management. Please visit our website. EOE

[www.LindseyMgmt.com](http://www.LindseyMgmt.com)

Go to Career Opportunities > Apartment Employment > Apply Now. 



**ARKANSAS - NORTHWEST ARKANSAS**

<b>FAYETTEVILLE</b>	
Appleby .....	479.443.9258
Chestnut II .....	479.521.6895
The Cliffs I .....	479.582.2540
The Cliffs II .....	479.444.0400
Cornerstone I/II .....	479.443.3507
Crafton Place/Starrfire .....	479.521.6895
Crossover Terrace .....	479.443.9744
East Oaks/Oakshire I/II .....	479.443.7278
Fair Park .....	479.587.9395
The Greens at Lakeside Village .....	479.442.7663
Lakeside Village .....	479.443.9022
The Links at Fayetteville .....	479.966.4340
The Greens at Fayetteville .....	479.966.4340
The Fairways at Fayetteville .....	479.966.4340
Markham Hill .....	479.443.9333
Paradise View .....	479.521.8299
The Park I/II .....	479.443.9804
Shiloh .....	479.442.4384
Southern View I/II .....	479.443.6698
Stearns Street/Vantage Center .....	479.527.9851
Valley Lake .....	479.444.9744
<b>SPRINGDALE</b>	
Bridgestone .....	479.751.8866
Eastwood .....	479.927.0676
Johnson Meadows .....	479.756.1312
The Links at Springdale I/II .....	479.750.1515
Station .....	479.756.1312
Sunset I/II/Holcomb .....	479.750.3030
Walnut Tree .....	479.751.8866
West End Place/Pleasant Point .....	479.750.3030
<b>LOWELL</b>	
The Links at Lowell .....	479.770.2100
<b>ROGERS</b>	
Brentwood I/II .....	479.631.5800
Briarwood .....	479.631.5800
Doubletree I/II .....	479.631.5800
Edgewood .....	479.631.5800
The Fairways at Lost Springs .....	479.621.0277
The Greens at Lost Springs .....	479.631.6515
The Greens on Blossom Way .....	479.631.2024
Lost Springs .....	479.621.9399
Turtle Creek I/II/Park .....	479.631.1444
<b>BENTONVILLE</b>	
Copperstone I/II .....	479.271.9300
Delmar .....	479.273.5283
The Links at Bentonville .....	479.271.0205
The Links at Rainbow Curve .....	479.657.6446
The Trails at Bentonville .....	479.657.6633
Moberly Manor I/II .....	479.273.2540
Moberly Place .....	479.273.3533
Walton Crossing .....	479.268.4237
<b>SILOAM SPRINGS</b>	
Spring Valley I/II .....	479.549.3213

**ARKANSAS—REST OF STATE**

<b>BENTON</b>	
Dogwood Lakes .....	501.794.3000
Fountain Lakes .....	501.778.3134
The Greens at Longhills .....	501.860.6968
<b>BRYANT</b>	
The Fairways at Hurricane Creek .....	501.847.7747
The Greens at Hurricane Creek .....	501.847.2586
The Lakes at Hurricane Creek .....	501.847.6178
<b>CONWAY</b>	
Centennial Valley I/II .....	501.513.2555
The Fairways at Nutters Chapel .....	501.205.8230
Fox Run .....	501.327.8739
Germantown .....	501.329.0767
The Greens at Nutters Chapel .....	501.450.7056
Lake Pointe .....	501.336.0900
The Links at Cadron Valley .....	501.513.0000
Salem Park .....	501.329.5900
Westlake .....	501.513.9392
<b>FORT SMITH</b>	
The Links at Fort Smith .....	479.648.8080
Pike Place .....	479.782.6686
<b>HARRISON</b>	
The Links at Harrison .....	870.365.3620
<b>JONESBORO</b>	
Gladiola Estates/Gladiola Manor .....	870.933.8333
The Greens at Jonesboro .....	870.275.6525
The Links at Jonesboro .....	870.275.6525
Park Lake .....	870.933.8333
<b>LITTLE ROCK</b>	
The Links at Eagle Hill .....	501.407.9088
Eagle Hill .....	501.455.8818
Eagle Nest .....	501.407.0567
Westwood I/II .....	501.455.8862
<b>NORTH LITTLE ROCK</b>	
The Greens at the Rock .....	501.753.1200
The Links at the Rock .....	501.812.5020
<b>MARION</b>	
The Fairways at Marion I/II/III .....	870.739.4949
The Greens at Marion I/II .....	870.739.6300
<b>PARAGOULD</b>	
Silverwood .....	870.239.3815
<b>RUSSELLVILLE</b>	
Shadow Lake .....	479.967.5584
Spring Lake I/II .....	479.858.7079
<b>SEARCY</b>	
Meadow Lake I/II .....	501.268.3355
<b>SHERWOOD</b>	
The Links at Sherwood .....	501.833.8010
<b>TEXARKANA</b>	
The Links at Texarkana .....	870.773.2295
<b>ALABAMA</b>	
<b>TUSCALOOSA</b>	
The Greens at Tuscaloosa I/II .....	205.342.3339
The Links at Tuscaloosa .....	205.247.9978
<b>AUBURN</b>	
The Greens at Auburn .....	334.821.4061
The Fairways at Auburn I/II .....	334.209.1850

**KANSAS**

<b>DERBY</b>	
The Greens at Derby I/II .....	316.788.3060
The Fairways at Derby .....	316.788.1028
The Links at Kansas .....	785.841.3868
The Links at Manhattan .....	785.539-8448
<b>SHAWNEE</b>	
The Greens at Shawnee .....	913.422.8295
<b>MISSISSIPPI</b>	
<b>OXFORD</b>	
The Links at Oxford .....	662.513.4949
<b>CANTON</b>	
The Greens of Madison County .....	601.391.3464
The Links of Madison County .....	601.859.5551
The Trails at Madison County .....	601.436.4707
<b>STARKVILLE</b>	
The Links at Starkville .....	662.338.1801
<b>MISSOURI</b>	
<b>JOPLIN</b>	
Tanglewood .....	417.623.3336
<b>SPRINGFIELD</b>	
The Greens at Springfield .....	417.833.3261
<b>GRANDVIEW</b>	
Grand Summit Apartments .....	816.331.3968
The Fairways at Grand Summit I/II .....	816.425.4059
<b>COLUMBIA</b>	
The Links at Columbia .....	573.474.4399
<b>OKLAHOMA</b>	
<b>BIXBY</b> Tulsa suburb	
The Links on Memorial I/II .....	918.369.6055
<b>BROKEN ARROW</b> Tulsa suburb	
The Greens at Broken Arrow I/II .....	918.355.0802
The Greens at Broken Arrow III .....	918.355.0802
The Greens on Aspen .....	918.872.8899
<b>CLAREMORE</b>	
Deer Run .....	918.343.7326
<b>OWASSO</b>	
The Greens at Owasso I/II .....	918.274.4800
The Greens at Owasso III/IV .....	918.376.4244
<b>STILLWATER</b>	
The Links at Stillwater .....	405.372.9910
The Greens at Stillwater .....	405.372.9910
<b>OKLAHOMA CITY</b>	
The Greens at Lake Overholser .....	405.494.9888
The Greens at Oklahoma City .....	405.602.5208
The Links at Oklahoma City .....	405.936.9211
The Trails at Rockwell .....	405.604.3583
<b>NORMAN</b> OKC	
The Links at Norman .....	405.321.3430
The Greens at Norman .....	405-321-3430
<b>EDMOND</b> OKC	
The Greens at Coffee Creek .....	405.216.3642
<b>MOORE</b> OKC	
The Greens at Moore .....	405.794.0062
The Fairways at Moore .....	405.895.6127
<b>YUKON</b> OKC	
The Links at Mustang Creek .....	405.577.5151
The Greens at Mustang Creek .....	405.577.5151

# WE ARE HIRING

Join our team in Bentonville, AR!



**We are hiring for several positions  
in both the office and warehouse.**

These are Full Time Regular positions that are eligible for benefits after 60 days of employment. *Eligible for monthly production bonuses!* All applicants must pass background check and drug screen.

**Machine Operators** needed, pay starts at \$15 per hour plus shift differential pay as well.



For full job descriptions  
and to apply, please visit:  
[www.outdoorcap.com/careers](http://www.outdoorcap.com/careers)



*Outdoor Cap is an equal opportunity employer.*