

JOB GUIDE

Jobs in Northwest Arkansas • Southwest Missouri • Tulsa Metro



Become part of the company that
is putting the **CARE** back into
HealthCARE!

First Call knows I work hard.

First Call knows I care.

First Call knows...*I'm Amazing!*

First Call, your Medical Staffing and Home Care Specialist, has needs for RNs, LPNs, CNAs and CHHAs for both part-time and full-time assignments paying up to:

RNs \$42.00

CNAs \$20.00

LPNs \$34.00

CHHAs \$18.00

Flexibility • Top Wages • Vacation
Daily Pay • AFLAC • Weekly Pay
Direct Deposit

First Call requires recent work experience and good references.

First Call®

Your Staffing Source.

Apply online at: **My-FirstCall.com.**

Drug testing required. Some restrictions apply.

Come See Us!

4125 S. Sheridan Rd
Tulsa, OK 74145
918.665.1011

7925 N. May Ave
Oklahoma City, OK 73120
405.842.7775

3354 S. National Suite D
Springfield, MO 65807
417.886.1001

Issue

Volume 33 Issue 25
Dec. 17 - Jan. 06, 2022

Advertise

thejobguide.com
800-654-9776

Free

Woman Owned

If you have a love for helping others this holiday season, We want to talk with you!

Become a **Personal Care Assistant**

- Earn bonuses
- Have paid holidays
- Work up to **40 hours per week**
- Have a flexible part-time work schedule
- Participate in voluntary benefits programs - Including participation in 403(b) retirement plans.
- This is a Safety-Sensitive job for purposes of the AR M.M.A.

40-HOUR SCHEDULES!

Offering ONLINE Training!

We provide **FREE 40-hour Personal Care Training ONLINE!** Check our website for more information.

Apply on-line:
aanwar.org/Employment
EEO | Employer/AA/M/F/Vet/Disabled
Employment subject to background check and drug screening.



HELP WANTED

Highest Pay in the Area!
Full Time & Part Time Assignments

RNs, LPNs, CNAs & Home Care Aides

Great Pay and Benefits:
Pay Advances • Direct Deposit • Uniform Discounts
• Flexible Schedules • Health Insurance and much more!

PRN Medical Services Apply online 24/7 at:
www.prnmedstaff.net
Or Apply In Person:
**4400 S. Thompson St.
Springdale, AR
479.756.8701**
Providing **opportunities** for the Best Employees Since 1990!

Notice to our Advertisers and Readers:

Job Guide, LLC is not responsible for ad contents, products or services offered. **Job Guide, LLC** reserves the right to reject advertising it deems unsuitable and liability does not exceed the cost of the advertisement placed. Any reproductions of the contents of this publication without the written consent of Job Guide, LLC is strictly prohibited.

Printing:
Stigler Printing

Distribution:
Job Guide, LLC
Arkansas Rack Co.
Distributech

Contact:
PO Box 813
Rogers, AR. 72757
800-654-9776

Sunny Martinez, CEO
sunny@thejobguide.com



@thejobguide88



@thejobguide88



/company/the-job-guide



Home Instead® CAREGiversSM are needed!

- Flexible Schedules / Part-Time / Full-Time / Overtime / Live-In / Long-Shifts / Short-Shifts
- Pay Range Up to \$16.00 / Holidays Paid 1.5 Rate / Career Path Development
- Full Time Benefits / Health, Dental, Vision, Legal and Identity Theft Insurances
- All Employee Benefits / Next Day Pay Direct Deposit, Mileage, Travel Time Between Shifts
- No Experience Necessary, Paid Training for PCA and CNA Certificates, Online University



To us, it's personal

Call (479) 936-9885 or visit

HomeInstead.com/375

Each Home Instead ® franchise is independently owned and operated. © 2020 Home Instead, Inc.



Circle of Life seeking experienced, compassionate candidates to join our TEAM!

- Admissions RN (PT)
- After Hours RN (FT)
- After Hours RN (PT)
- Chaplain (FT & PRN)
- CNA Inpatient (PRN & FT)
- CNA Outpatient (FT)
- Director of Outpatient Services
- LPN Weekend (PT)
- Night Call Nurse (PRN)
- Receptionist (PT)
- RN Case Manager (FT Outpatient)
- Social Worker Outpatient/ Inpatient (LSW/SMSW/LCSW)
- Staff RNs (Full Time & PRN)
- Unit Administrative Assistant (Part Time & PRN)
- Weekend LPN (PT)

CIRCLE of LIFE  HOSPICE

Apply online at: nwacircleoflife.org
 Contact Human Resources at: 479-872-3366 or 479-872-3397

Earlene Howard Hospice Home
 901 Jones Road | Springdale, AR 72762

Marie & John Carr Hospice Home
 1201 NE Legacy Parkway | Bentonville, AR 72712
 Drug Free Workplace Equal Opportunity Employer



JOIN OUR TEAM!

Infant and Toddler Teachers
Classroom Assistants
Family Service Workers
Administrative Assistant

Welcome to a different kind of role and a different kind of childcare provider. Here, in addition to your regular job, your day will include impacting the development of at-risk children and families - right here in your community. Some of our perks:

- Witness children's growth and development
- Paid Time Off
- Paid Training with competitive pay
- Great benefits package!!!



<https://www.earlylearning.org/employment>

FULL TIME! SET SCHEDULE! HOLIDAYS OFF!

Are you a compassionate person, who loves helping others?



We are looking for YOU!

Compassionate Caregivers needed to work in the NW AR Region!

- Flexible Schedules & Locations
- Incentive time off
- Competitive wages
- Caregiver referral bonuses
- 401k/Health/Dental/ Vision Insurance
- Unique Assignments
- Specialized training
- Direct Deposit

\$11 - \$15 per hr. *No Experience Required*
 Depending on assignment *Paid Training Provided!!*

Retired & newly graduated healthcare professions, RNs, PCAs and CNAs encouraged to apply!

WALK-IN WEDNESDAY!
APPLY IN PERSON AND INTERVIEW ON THE SPOT!

Apply in person:
 3190 Bella Vista Way | Bella Vista, AR 72714
 Contact TODAY us @ 479-855-6000 for more information

rah-ar.com



Ready to Launch

NOW HIRING!

Operators/Assemblers

-Up to \$18.29/hour

Forklift Operators

-Up to \$18.29/hour

Maintenance Technicians

-Up to \$29.79/hour

Onsite interviews

Job Fair

Friday, January 14, 2022, 1pm - 5pm

**1100 W 15th Street,
Fayetteville, AR 72701**



Apply Today!
conagrabrands.com

Conagra Brands is an Affirmative Action and Equal Opportunity Employer.



Drivers needed for the New Year!

Full and Part-Time Routes Available

Excellent Benefits:

Health, Vision, Dental, Paid Holidays, Paid Vacations, Retirement with employer match

Women, Minorities and Retirees are encouraged to apply



Apply today at: www.ozark.org

For more information call:

479-361-8741 | 479-361-8752

Email: thill@ozark.org

2423 E Robinson, Springdale, AR



Pre-employment physical, drug test and background check. | An Equal Employment Opportunity Employer

MECHANIC NEEDED



Experience in a heavy-duty or transit mechanical shop preferred. ASE certifications preferred. CDL or ability to obtain CDL.

Hourly wage depending on experience.

Excellent Benefits:

Health, Vision, Dental, Paid Vacations, Uniforms provided

457 (b) retirement with employer match

Women & Minorities encouraged to apply



2423 E Robinson, Springdale, AR

Apply online: www.ozark.org

479-361-8741 or email: thill@ozark.org

Pre-employment physical, drug test and background check.
An Equal Employment Opportunity Employer



Currently taking applications for:

Heavy Equipment Operators (HEO)

- Operates heavy equipment in the construction, improvement, and maintenance of county roads.
- Operates road department equipment including dump trucks, loaders and graders.

Juvenile Detention Officers

- The Juvenile Detention Officer, serves the County by efficiently supervising and maintaining discipline, and meeting these needs of the residents in accordance with federal and state law.
- Work effectively with all divisions and departments and the public.
- Must meet minimum requirements under state law for Juvenile Detention Standards Training (40 hours of training).

For more information or download an application:

washingtoncountyar.gov

All employees are hired through the:
Washington County | HR Department
280 North College, Suite 510 | Fayetteville, AR 72701
479.973.8465

Applications accepted in person
Monday - Friday between 8 am and 4 pm

EOE

Females and minorities encouraged to apply.



Taking applications for: Maintenance Tech 3rd Shift



**Weekly bonuses
+
\$1,200 Sign-On Bonus!**

Cargill Offers:

- Competitive Wages & Weekly Bonus Programs
- Overtime available
- Paid vacation and holidays
- Full Benefit package including medical, dental, vision and 401K

Apply online:

cargill.com/springdale

Cargill is an Equal Opportunity Employer, including Disability/Vet. Drug Free Employer



**\$1,200
Sign-On Bonus!**

**Weekly
Attendance
Bonus!**

New Pay Rates!

**Ranging from:
\$15.10/hr - \$18.25/hr**



Cargill Offers:

- Competitive Wages & Weekly Bonus Programs
- Overtime available
- Paid vacation and holidays
- Full Benefit package including medical, dental, vision and 401K

Apply online:

www.cargill.com/springdale

Cargill is an Equal Opportunity Employer, including Disability/Vet. Drug Free Employer



**WORK
WITH COOL
PEOPLE
GREAT BENEFITS
WE'RE HIRING**



OR

**TEXT
RCJOBS
TO 97211**

By texting RCJOBS to 97211 you consent to be contacted by Raising Cane's Restaurants through an automated texting system. Consent not required for purchase. Text STOP to 97211 to opt out of messages. Message data charges may apply.

\$1,500 Sign-On Bonus!

Offal Operators Floater

Cargill Offers:

- Competitive Wages & Weekly Bonus Programs
- Overtime available
- Paid vacation and holidays
- Full Benefit package including medical, dental, vision and 401K

Starting Rate: \$20.00+ Weekly bonuses

Apply online:

www.cargill.com/springdale



Cargill is an Equal Opportunity Employer, including Disability/Vet. Drug Free Employer



NOW HIRING!
Springdale
Public Schools

is now accepting applications for
Part-Time and/or Full-Time

BUS DRIVERS

- 8 paid holidays
- Teacher Retirement benefits available for full-time employees.
- Other duties may be available with additional pay.
- ***Paid Training is available.***

Beginning Drivers starting pay \$71.47 per day
(w/no exp.)

Refer to transportation salary schedule online for complete pay scale

Apply in person at **1612 E. Emma Ave, Springdale, AR 72764**
Or applications are available online:

apply.sdale.org

Click the Apply Now tab - Bus Driver Position

Or call Transportation Dept. for more info @ **479-750-8830**

WE ARE HIRING

Join our team in Bentonville, AR!



We are hiring for several positions
in both the office and warehouse.

These are Full Time Regular positions that are eligible for benefits after 60 days of employment. *Eligible for monthly production bonuses!* All applicants must pass background check and drug screen.

Machine Operators needed, pay starts at \$15 per hour plus shift differential pay as well.



For full job descriptions
and to apply, please visit:
www.outdoorcap.com/careers



Outdoor Cap is an equal opportunity employer.

Earn Starting Pay Up to \$21/Hr!

Hourly pay starts at \$20/hr for A shift and \$21/hr for B shift.



- ✔ Relocation + Housing Assistance
- ✔ Overtime Available
- ✔ No Sundays
- ✔ On-Site Cafeteria

Text **TRIUMPH** to 97211

TriumphFoods.com/Apply
5302 Stockyards Expy,
St Joseph, MO 64504



**Start the NEW
YEAR with a
NEW CAREER
with us!**

2022

**Mid-South Steam Boiler in Van Buren, AR
is currently hiring for:**

BOILER TECHNICIAN APPRENTICE

- Basic Electrical & Mechanical Background
- Troubleshooting Mechanical and Basic Electrical Systems
- Understand electrical schematics
- Travel Required
- Must be at least 21 years old

EXPERIENCED WELDERS

- Stick
- Mig
- Tig
- Pipe
- Structural
- Flux Core
- *Must pass welding test*
- *Must be at least 18 years old*

GENERAL LABORERS

General Laborers will provide support to all areas of production by performing various duties as needed by production departments. Travel required. No experience required. Will train. Must be at least 18 years old.



EMPLOYMENT REQUIREMENTS:

- Must have a clean driving record to operate a company vehicle
- Pay based on position/experience
- Stable Work History
- Criminal background checks and drug screens performed on all potential employees

BENEFITS:

- Medical/Dental - Blue Cross/Blue Shield of AR
- AFLAC
- Kansas City Life | New York Life
- 401(k)
- VSP
- Direct Deposit



WAYS TO APPLY:

- Phone: **479-471-1468**
- Email: Resume with references to **jobs@midsouthboiler.com**
- Fax: **(479) 262-6446**

EOE

midsouthboiler.com



The University of Arkansas, Fayetteville offers employment opportunities in the fields of:
Maintenance ▪ Custodial ▪ Computer Technical ▪ Clerical

Current Opportunities Include:

- Administrative Analyst
- Administrative Specialist II
- Administrative Specialist III
- Administrative Support Supervisor
- Assistant Business Manager
- Athletic Facility Supervisor
- Bus Operator (Current and Anticipated Future Openings)
- eProcurement Training Administrator
- Event Support Specialist
- Facilities Coordinator
- Fiscal Support Analyst
- Fiscal Support Manager – Mechanical Engineering
- Fiscal Support Specialist
- Fiscal Support Specialist – Mechanical Engineering
- Graduate and Payroll Accounting Coordinator
- Occupational Safety Coordinator
- Payroll Coordinator
- Procurement Coordinator
- Programs and Business Coordinator
- Purchasing/Travel Coordinator
- Service Assistant (Current and Anticipated Future Openings)
- Service Assistant (Custodial Worker) (Three Open Positions)

The University of Arkansas provides one of the most comprehensive and competitive benefit packages in the region.

- | | | |
|---------------------|----------------------|-----------------|
| • Health Coverage | • Paid Holidays | • Short & Long |
| • Dental Coverage | • Sick Leave | Term Disability |
| • Prescription Drug | • Vacation Leave | • Employee |
| • Retirement | • Catastrophic Leave | Assistance |
| • Basic Life | • Family & Medical | Program and |
| • Optional Life | Leave | More! |
| • Tuition Reduction | • Vision | |



UNIVERSITY OF ARKANSAS

The University of Arkansas has an in-house temporary employment staffing service called RazorTemps. Apply to this posting if you are interested in being considered for temporary employment opportunities. These positions vary in length and often provide a 'foot in the door' to permanent employment at the University.

The University of Arkansas recognized the challenge of balancing work with personal life, and we pro actively look for ways to help our employees do well at both aspects of their lives. This includes creating health insurance and retirement plans that work well; offering work-time options where possible; promoting career and personal development; and giving paid leave for holidays, illness, vacations, children's educational activities and military duty, among others.

As we strive to represent the best of public higher education, advance Arkansas and build a better world by providing transformational opportunities and skills, promoting an inclusive and diverse culture, nurturing creativity, and solving problems through research and discovery, the University of Arkansas provides excellent opportunities for professional service and that you can be a part of the worthwhile advancement of the University. We believe in fostering a collaborative and innovative culture among our diverse faculty staff and students that promotes a healthy balance.

To apply for above positions, please visit our website at:

<https://uasys.wd5.myworkdayjobs.com/UASYS>

For more information, please contact us at 479.575.5351.

The University of Arkansas is an Equal Opportunity-Affirmative Action Institution.



DELIVERY DRIVERS

Clean Driving Record | Dependable
Pass a Drug Screen
We offer great pay & benefits!

DELIVERY HELPERS

\$20.00 Per Hour
Up to 30 Hours Per Week
No Benefits for this position

Apply In Person

Mon - Fri | 8:00 am to 5:00 pm
(Closed noon to 1:00 pm)

2849 South School Ave | Fayetteville, AR 72701



Lassonde

LASSONDE PAPPAS AND COMPANY, INC.

A world leader in the production of fruit juice and related products, **Now Hiring in ALL DEPARTMENTS** in our **Springdale, AR facility:**

Production/Batching/Warehouse

- Starting Pay: \$15/hr 50 cent increase after 90 days
- 6pm-6am 3~4 shift pattern
- Benefits 1st of the month following 30 days of employment
- Vacation and PTO pro-rated for 2021

NOW OFFERING: \$1000 SIGN ON BONUS THROUGH 12/31/2021!

Apply online:

<https://lassondepappas.com/careers>

EEO/AAP



Now Hiring:
DAY SHIFT PRODUCTION Positions

A graphic showing a white notepad with the words "SALARY INCREASE" in large blue letters. The notepad is on a yellow surface, with a blue pushpin and a blue pen nearby.

**SALARY
INCREASE**

NEW Pay Rates starting at:

\$15.90 up to \$16.40!

\$1.50 Pay Increase after 90 days!

\$1.00 Shift Premium!



RETENTION BONUS EARNING POTENTIAL:

UP TO \$2000

APPLY ONLINE TODAY AT:

careers.butterball.com

Don't have a computer at home?

Apply onsite using our computers | Mon.- Fri., 9 a.m.-4 p.m.

1294 N. College Street, Huntsville, AR | 479-738-2151

EOE including Disability/Vets.

MECHANIC NEEDED



Experience in a heavy-duty or transit mechanical shop preferred. ASE certifications preferred. CDL or ability to obtain CDL.

Hourly wage depending on experience.

Excellent Benefits:

Health, Vision, Dental, Paid Vacations, Uniforms provided

457 (b) retirement with employer match

Women & Minorities encouraged to apply



2423 E Robinson, Springdale, AR

Apply online: www.ozark.org

479-361-8741 or email: thill@ozark.org

Pre-employment physical, drug test and background check.
An Equal Employment Opportunity Employer



Tyson

BERRY STREET

Industrial Maintenance

Scale House Operators

FSQA Associate

FSQA Supervisor

Maintenance Training Supervisor

Production Supervisor

Apply online at:

www.tysonfoodscareers.com

Tyson is an Equal Opportunity/Affirmative Action Employer. All qualified applicants will be considered without regard to race, national origin, color, religion, age, genetics, sex, sexual orientation, gender identity, disability, or veteran status.

Safety is top priority at Tyson. Effective November 1st, 2021, successful applicants hired at this facility must be fully vaccinated against COVID-19 and provide proof of vaccination prior to starting work.

L A Z B O Y

¡UNETE A NOSOTROS!

ESTAMOS CONTRATANDO
2do TURNO

- Pago incentivo por equipo.
- Excelente ambiente laboral.
- Paquete de beneficios competitivos.
- Bonos por referencias

ENTREVISTAS EN PERSONA

STARTING PAY
\$14.26
PER HOUR



JOIN US!
WE'RE
HIRING
2nd SHIFT

- Incentive team pay.
- Comfortable working environment
- Great benefits package.

Referral Bonus!
ON SITE INTERVIEWS

2601 N. Country Club Rd. Siloam Springs, AR

479-215-4336



CRH is the leading local distributor for products such as rock and asphalt as well as a road construction company. Many of our positions are designed to train you on the job with little to no experience required. APAC, Standard Materials and Arkhola are part of the CRH family.

We're HIRING **APAC/SMG - AR Openings for NW AR**
 Contact: (479) 684-5005 or (479) 263-2177 for details.
 Se Habla Español

- Construction
- Aggregates
- Ready Mix Local Drivers (CDL)
- Field
- Office Personnel

BONUS **Potential Sign On Bonus of up to \$1,500!!!!**
 Opportunities Range from Entry Level to Experienced Professionals

Arkhola Openings for Fort Smith, Arkansas **Potential Sign On Bonus of up to \$1,500!!!!**
 For more information contact Marsha Hayes at: (479) 788-6365.

- Asphalt Ground Laborer
- QC Lab Tech
- Ready Mixer Drivers
- Heavy Equipment Operator
- 2nd Shift Quarry Workers

APAC Openings for Muskogee, Oklahoma **Potential Sign On Bonus of up to \$1,500!!!!**
 For more information contact Marsha Hayes at: (479) 788-6365.

- Asphalt Superintendent
- Construction Heavy Equipment Operator
- Dirt Crew Foreperson
- Class A Heavy Haul Truck Drivers
- Construction Laborer
- Ready Mixers Drivers
- Shop Mechanic

APAC Oklahoma Openings for Tulsa, Oklahoma
 For more information contact Lisa Chapman at: (918) 556-2236.

- Asphalt Plant Mechanic
- CDL A Dump Truck Driver
- Construction Laborer
- Construction Heavy Equipment Operator
- Concrete Finisher
- Facilities Maintenance
- Quarry Equipment Operator
- Quarry Maintenance
- Quarry Worker

SMG - Oklahoma Openings for Tulsa, Oklahoma
 For more information contact Lisa Chapman at: (918) 556-2236.

- Diesel Mechanic
- Class A Bulker Driver
- Class A Dump Driver
- Plant Operator- Vinita, OK and Claremore, OK
- Ready Mix Drivers

You may apply online for any of the above positions and see more listings at:
<https://www.crhamericas.com>

Competitive Wages, Benefits and Excellent Safety Culture!
 APAC Central Inc. is an Affirmative Action and Equal Opportunity Employer



- Machine Operators/Operadores de Maquina
- Extrusion Operators/Operador de Extrusión
- Maintenance Techs/Mecánicos
- Quality Techs/Control de Calidad
- General Labor/Producción General

We Offer/Ofrecemos:

- 3 1/2 Day Work Week/Semana de 3 dias y medio
- Competitive Wages & Benefits/Pago y Beneficios Competitivos
- Bonus Earning Potential/Potencial de Bonos
- Day and Night Openings Posiciones de Dia y Noche
- Advancement Opportunities/Oportunidades de Crecimiento



Apply online/Aplique en línea en:

<https://jobs.crh.com>

Search/ Busque: "MoistureShield"

Apply onsite/ Aplique en Persona:

Mon/Lunes – Fri/Viernes: 9 am – 4 pm

801 N. Jefferson St.
Springdale, AR 72764
479-750-1299

Equal Opportunity Employer and Drug Free Workplace

WORK WITH COOL PEOPLE GREAT BENEFITS WE'RE HIRING

OR TEXT RCJOBS TO 97211

By texting RCJOBS to 97211 you consent to be contacted by Raising Cane's Restaurants through an automated texting system. Consent not required for purchase. Text STOP to 97211 to opt out of messages. Message data charges may apply.

WE ARE HIRING

Join our team in Bentonville, AR!



We are hiring for several positions in both the office and warehouse.

These are Full Time Regular positions that are eligible for benefits after 60 days of employment. *Eligible for monthly production bonuses!*All applicants must pass background check and drug screen.

Machine Operators needed, pay starts at \$15 per hour plus shift differential pay as well.



For full job descriptions and to apply, please visit: www.outdoorcap.com/careers



Outdoor Cap is an equal opportunity employer.



Job Opportunities
workatsimmons.com

Prepared Foods

Gentry, AR
Southwest City, MO
Van Buren, AR

Day & Night Shift

- Production
- Maintenance

Animal Nutrition

Siloam Springs, AR
Southwest City, MO

Day & Night Shift

- Utility Production
- Maintenance
- Operators

Pet Food

Siloam Springs, AR

Day & Night Shift

- Utility
- Maintenance
- Refrigeration



Full-Time Opportunities Available

Siloam Springs & Gentry, AR Locations
Starting Pay: \$15.50 - \$19.75/hr

Southwest City, MO Locations
Starting Pay: \$17.25 - \$19/hr

Hiring Bonus: +\$.50/hr for Night Shift (all locations)

Better Basic Benefits:



Build Your Paycheck

- Competitive Pay + Hiring Bonus
- Referral Bonuses
- First 6 Months = Vacation Pay
- Vacation Match (Currently Employed)



Simmons Care Clinics

- High-Quality Healthcare
- Team Members & Families
- Free Generic Prescriptions



Education Financial Aid

- Support For GED to PhD.
- On-The-Job Training
- Professional Development

Apply Online or In Person Same-Day Hiring

NWA Hiring Center

2998 Hwy 412 East, Ste 80
Siloam Springs, AR 72761
(844) 400-9357 Option 3

SWC Hiring Center

10700 S. State Hwy 43
Southwest City, MO 64863
(417) 762-3271 Option 3

Fort Smith Hiring Center

4900 Rogers Ave., Suite 103 D
Fort Smith, AR 72903
(479) 262-5390 Option 3



2022 SPRING SCHEDULE

START DATES

CNA _____	Jan 4
Medical Assistant _____	Jan 3
Dental Assistant _____	Jan 3
LLRT _____	Jan 3
Billing & Coding _____	Jan 10
Pharmacy _____	Jan 10
Phlebotomy _____	Jan 4
Veterinary _____	Jan 4
EKG _____	Feb 8

PetraAlliedHealth.com | 479-750-9876
 Licensed by Arkansas Division of Higher Education



Circle of Life seeking experienced, compassionate candidates to join our TEAM!

- Admissions RN (PT)
- After Hours RN (FT)
- After Hours RN (PT)
- Chaplain (FT & PRN)
- CNA Inpatient (PRN & FT)
- CNA Outpatient (FT)
- Director of Outpatient Services
- LPN Weekend (PT)
- Night Call Nurse (PRN)
- Receptionist (PT)
- RN Case Manager (FT Outpatient)
- Social Worker Outpatient/ Inpatient (LSW/SMSW/LCSW)
- Staff RNs (Full Time & PRN)
- Unit Administrative Assistant (Part Time & PRN)
- Weekend LPN (PT)



Apply online at: nwacircleoflife.org
 Contact Human Resources at: 479-872-3366 or 479-872-3397

Earlene Howard Hospice Home
 901 Jones Road | Springdale, AR 72762

Marie & John Carr Hospice Home
 1201 NE Legacy Parkway | Bentonville, AR 72712
 Drug Free Workplace Equal Opportunity Employer

NWACC Adult Education

- GED: High School Equivalency
- ESL: English as a Second Language
- College Prep for Math and Literacy
 - Career Education
 - Employability Skills Training
 - WAGE I

All Services are FREE



Shewmaker Center for Workforce Technologies
 1000 S.E. Eagle Way, Bentonville AR 72712

What is Your Next Step?

To Connect with Us, email: askadulthood@nwacc.edu

NWACC Adult Education provides access to all programs and activities. Must be 18 Years or older to participate. Paid for with funds from the Arkansas Department of Career Education, Adult Education Division.



JOIN OUR TEAM!

- Infant and Toddler Teachers**
- Classroom Assistants**
- Family Service Workers**
- Administrative Assistant**

Welcome to a different kind of role and a different kind of childcare provider. Here, in addition to your regular job, your day will include impacting the development of at-risk children and families - right here in your community. Some of our perks:

- Witness children's growth and development
- Paid Time Off
- Paid Training with competitive pay
- Great benefits package!!!



Apply Now

<https://www.earlylearning.org/employment>

FULL TIME! SET SCHEDULE! HOLIDAYS OFF!

Are you a compassionate person, who loves helping others?



We are looking for YOU!

Compassionate Caregivers needed to work in the NW AR Region!

- Flexible Schedules & Locations
- Incentive time off
- Competitive wages
- Caregiver referral bonuses
- 401k/Health/Dental/Vision Insurance
- Unique Assignments
- Specialized training
- Direct Deposit

\$11 - \$15 per hr. *No Experience Required*
Depending on assignment *Paid Training Provided!!*

Retired & newly graduated healthcare professions, RNs, PCAs and CNAs encouraged to apply!

WALK-IN WEDNESDAY!
APPLY IN PERSON AND INTERVIEW ON THE SPOT!

Apply in person:

3190 Bella Vista Way | Bella Vista, AR 72714

Contact TODAY us @ 479-855-6000 for more information

rah-ar.com



Currently taking applications for:

Heavy Equipment Operators (HEO)

- Operates heavy equipment in the construction, improvement, and maintenance of county roads.
- Operates road department equipment including dump trucks, loaders and graders.

Juvenile Detention Officers

- The Juvenile Detention Officer, serves the County by efficiently supervising and maintaining discipline, and meeting these needs of the residents in accordance with federal and state law.
- Work effectively with all divisions and departments and the public.
- Must meet minimum requirements under state law for Juvenile Detention Standards Training (40 hours of training).

For more information or download an application:

washingtoncountyar.gov

All employees are hired through the:
Washington County | HR Department
280 North College, Suite 510 | Fayetteville, AR 72701
479.973.8465

Applications accepted in person
Monday - Friday between 8 am and 4 pm

EOE

Females and minorities encouraged to apply.



Ready to Launch

NOW HIRING!

Operators/Assemblers

-Up to \$18.29/hour

Forklift Operators

-Up to \$18.29/hour

Maintenance Technicians

-Up to \$29.79/hour

Onsite interviews

Job Fair

Friday, January 14, 2022, 1pm - 5pm

**1100 W 15th Street,
Fayetteville, AR 72701**



Apply Today!

conagrabrands.com

Conagra Brands is an Affirmative Action and Equal Opportunity Employer.



CRH is the leading local distributor for products such as rock and asphalt as well as a road construction company. Many of our positions are designed to train you on the job with little to no experience required. APAC, Standard Materials and Arkhola are part of the CRH family.

We're HIRING **APAC/SMG - AR Openings for NW AR**
 Contact: (479) 684-5005 or (479) 263-2177 for details.
 Se Habla Español

- Construction
- Aggregates
- Ready Mix Local Drivers (CDL)
- Field
- Office Personnel

BONUS **Potential Sign On Bonus of up to \$1,500!!!!**
 Opportunities Range from Entry Level to Experienced Professionals

Arkhola Openings for Fort Smith, Arkansas **Potential Sign On Bonus of up to \$1,500!!!!**
 For more information contact Marsha Hayes at: (479) 788-6365.

- Asphalt Ground Laborer
- QC Lab Tech
- Ready Mixer Drivers
- Heavy Equipment Operator
- 2nd Shift Quarry Workers

APAC Openings for Muskogee, Oklahoma **Potential Sign On Bonus of up to \$1,500!!!!**
 For more information contact Marsha Hayes at: (479) 788-6365.

- Asphalt Superintendent
- Construction Heavy Equipment Operator
- Dirt Crew Foreperson
- Class A Heavy Haul Truck Drivers
- Construction Laborer
- Ready Mixers Drivers
- Shop Mechanic

APAC Oklahoma Openings for Tulsa, Oklahoma
 For more information contact Lisa Chapman at: (918) 556-2236.

- Asphalt Plant Mechanic
- CDL A Dump Truck Driver
- Construction Laborer
- Construction Heavy Equipment Operator
- Concrete Finisher
- Facilities Maintenance
- Quarry Equipment Operator
- Quarry Maintenance
- Quarry Worker

SMG - Oklahoma Openings for Tulsa, Oklahoma
 For more information contact Lisa Chapman at: (918) 556-2236.

- Diesel Mechanic
- Class A Bulker Driver
- Class A Dump Driver
- Plant Operator- Vinita, OK and Claremore, OK
- Ready Mix Drivers

You may apply online for any of the above positions and see more listings at:
<https://www.crhamericas.com>

Competitive Wages, Benefits and Excellent Safety Culture!
 APAC Central Inc. is an Affirmative Action and Equal Opportunity Employer

GET YOU ONE OF THEM FANCY LAWYERS



Job Guide now offers

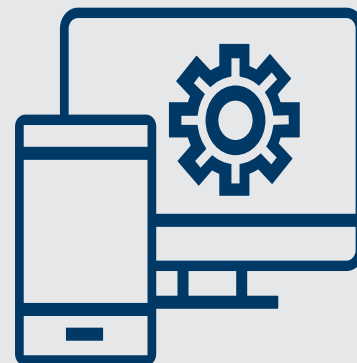
CREATIVE



BRANDING



WEB DEVELOPMENT



Contact: alex@thejobguide.com or call: 800-654-9776



MARTINEZ
SPORTS CARDS

2018 PANINI DONRUSS OPTIC
LEON CURANT
422 GEM MT 10
4228922

2018 PANINI DONRUSS
BAKER MAYFIELD
403 GEM MT 10
4228922

2020 TOPPS CHROME
LUS ROBERT
F20 GEM MT 10
4228909

2020 TOPPS CHROME
REFRACOR
F20 GEM MT 10
4228909

BASKETBALL CARDS
BASEBALL CARDS
FOOTBALL CARDS

www.martinezsportscards.com



Northwest Arkansas
NOARK
Human Resources
Association, Inc.

info@noark.org | 479-305-2466

Affiliate of the Society of Human Resource Management (SHRM)

Membership benefits include:
Monthly program meeting featuring top local and national speakers
Learning labs
Seminars
Networking events
And More!

Join us @
www.noark.org



L A Z B O Y

¡UNETE A NOSOTROS!
ESTAMOS CONTRATANDO
2do TURNO

STARTING PAY
\$14.26
PER HOUR

JOIN US!
WE'RE HIRING
2nd SHIFT

- Pago incentivo por equipo.
- Excelente ambiente laboral.
- Paquete de beneficios competitivos.
- Bonos por referencias

- Incentive team pay.
- Comfortable working environment
- Great benefits package.
- Referral Bonus!

ENTREVISTAS EN PERSONA

ON SITE INTERVIEWS

2601 N. Country Club Rd. Siloam Springs, AR 479-215-4336



Need affordable Medicare that's in step with your life?

Choosing the right Medicare coverage can be confusing.

I can help you find a plan that's right for YOU and YOUR BUDGET.

health
markets



Call today for personalized service!
918-376-0194

Rick Thomas, Licensed Insurance Agent
Representing Multiple Insurance Companies

This is an advertisement. Not all agents are licensed to sell all products. Service and product availability varies by state. HMIA001594

TAHRA

Tulsa Area HUMAN RESOURCES Association

www.tahra.org • admin@tahra.org • 918-344-4622

GET PLUGGED IN!

- Affiliate of the Society for Human Resource Management (SHRM)
- With 500+ members, we are the largest HR chapter in Oklahoma
- Membership benefits include:
 - Monthly program meetings featuring top local and national speakers
 - Learning labs
 - Seminars
 - Networking events
 - And more!

JOIN US @ TAHRA.ORG

AFFILIATE OF
SHRM
SOCIETY FOR HUMAN RESOURCE MANAGEMENT

Earn Starting Pay Up to \$21/Hr!

Hourly pay starts at \$20/hr for A shift and \$21/hr for B shift.

- ✓ Relocation + Housing Assistance
- ✓ Overtime Available
- ✓ No Sundays
- ✓ On-Site Cafeteria

Text **TRIUMPH** to 97211

TriumphFoods.com/Apply
5302 Stockyards Expy,
St Joseph, MO 64504



Lindsey Management Co., Inc. provides management services to the multifamily apartment properties listed. Thinking about a new career; property management may be a good field to consider.



We are currently hiring assistant managers, leasing consultants & maintenance techs at various properties. These positions are key to the successful management of apartment properties and are positions that can lead to management. Please visit our website. EOE

www.LindseyMgmt.com

Go to Career Opportunities > Apartment Employment > Apply Now. 



ARKANSAS - NORTHWEST ARKANSAS

FAYETTEVILLE

Appleby.....	479.443.9258
Chestnut II.....	479.521.6895
The Cliffs I.....	479.582.2540
The Cliffs II.....	479.444.0400
Cornerstone I/II.....	479.443.3507
Crafton Place/Starrfire.....	479.521.6895
Crossover Terrace.....	479.443.9744
East Oaks/Oakshire I/II.....	479.443.7278
Fair Park.....	479.587.9395
The Greens at Lakeside Village.....	479.442.7663
Lakeside Village.....	479.443.9022
The Links at Fayetteville.....	479.966.4340
The Greens at Fayetteville.....	479.966.4340
The Fairways at Fayetteville.....	479.966.4340
Markham Hill.....	479.443.9333
Paradise View.....	479.521.8299
The Park I/II.....	479.443.9804
Shiloh.....	479.442.4384
Southern View I/II.....	479.443.6698
Stearns Street/Vantage Center.....	479.527.9851
Valley Lake.....	479.444.9744

SPRINGDALE

Bridgestone.....	479.751.8866
Eastwood.....	479.927.0676
Johnson Meadows.....	479.756.1312
The Trails at the Crossings.....	479.717.6868
The Links at Springdale I/II.....	479.750.1515
Station.....	479.756.1312
Sunset I/II/Holcomb.....	479.750.3030
Walnut Tree.....	479.751.8866
West End Place/Pleasant Point.....	479.750.3030

LOWELL

The Links at Lowell.....	479.770.2100
--------------------------	--------------

ROGERS

Brentwood I/II.....	479.631.5800
Briarwood.....	479.631.5800
Doubletree I/II.....	479.631.5800
Edgewood.....	479.631.5800
The Fairways at Lost Springs.....	479.621.0277
The Greens at Lost Springs.....	479.631.6515
The Greens on Blossom Way.....	479.631.2024
Lost Springs.....	479.621.9399
Turtle Creek I/II/Park.....	479.631.1444

BENTONVILLE

Copperstone I/II.....	479.271.9300
Delmar.....	479.273.5283
The Links at Bentonville.....	479.271.0205
The Links at Rainbow Curve.....	479.657.6446
The Trails at Bentonville.....	479.657.6633
Moberly Manor I/II.....	479.273.2540
Moberly Place.....	479.273.3533
Walton Crossing.....	479.268.4237

SILOAM SPRINGS

Spring Valley I/II.....	479.549.3213
-------------------------	--------------

ARKANSAS—REST OF STATE

BENTON

Dogwood Lakes.....	501.794.3000
Fountain Lakes.....	501.778.3134
The Greens at Longhills.....	501.860.6968

BRYANT

The Fairways at Hurricane Creek.....	501.847.7747
The Greens at Hurricane Creek.....	501.847.2586
The Lakes at Hurricane Creek.....	501.847.6178

CONWAY

Centennial Valley I/II.....	501.513.2555
The Fairways at Nutters Chapel.....	501.205.8230
Fox Run.....	501.327.8739
Germantown.....	501.329.0767
The Greens at Nutters Chapel.....	501.450.7056
Lake Pointe.....	501.336.0900
The Links at Cadron Valley.....	501.513.0000
Salem Park.....	501.329.5900
Westlake.....	501.513.9392

FORT SMITH

The Links at Fort Smith.....	479.648.8080
Pike Place.....	479.782.6686

HARRISON

The Links at Harrison.....	870.365.3620
----------------------------	--------------

JONESBORO

Gladiola Estates/Gladiola Manor.....	870.933.8333
The Greens at Jonesboro.....	870.275.6525
The Links at Jonesboro.....	870.275.6525
Park Lake.....	870.933.8333

LITTLE ROCK

The Links at Eagle Hill.....	501.407.9088
Eagle Hill.....	501.455.8818
Eagle Nest.....	501.407.0567
Westwood I/II.....	501.455.8862

NORTH LITTLE ROCK

The Greens at the Rock.....	501.753.1200
The Links at the Rock.....	501.812.5020

MARION

The Fairways at Marion I/II/III.....	870.739.4949
The Greens at Marion I/II.....	870.739.6300

PARAGOULD

Silverwood.....	870.239.3815
-----------------	--------------

RUSSELLVILLE

Shadow Lake.....	479.967.5584
Spring Lake I/II.....	479.858.7079

SEARCY

Meadow Lake I/II.....	501.268.3355
-----------------------	--------------

SHERWOOD

The Links at Sherwood.....	501.833.8010
----------------------------	--------------

TEXARKANA

The Links at Texarkana.....	870.773.2295
-----------------------------	--------------

ALABAMA

TUSCALOOSA

The Greens at Tuscaloosa I/II.....	205.342.3339
The Links at Tuscaloosa.....	205.247.9978

AUBURN

The Greens at Auburn.....	334.821.4061
The Fairways at Auburn I/II.....	334.209.1850

KANSAS

DERBY

The Greens at Derby I/II.....	316.788.3060
The Fairways at Derby.....	316.788.1028
The Links at Kansas.....	785.841.3868
The Links at Manhattan.....	785.539.8448

SHAWNEE

The Greens at Shawnee.....	913.422.8295
----------------------------	--------------

MISSISSIPPI

OXFORD

The Links at Oxford.....	662.513.4949
--------------------------	--------------

CANTON

The Greens of Madison County.....	601.391.3464
The Links of Madison County.....	601.859.5551
The Trails at Madison County.....	601.436.4707

STARKVILLE

The Links at Starkville.....	662.338.1801
------------------------------	--------------

MISSOURI

JOPLIN

Tanglewood.....	417.623.3336
-----------------	--------------

SPRINGFIELD

The Greens at Springfield.....	417.833.3261
--------------------------------	--------------

GRANDVIEW

Grand Summit Apartments.....	816.331.3968
The Fairways at Grand Summit I/II.....	816.425.4059

COLUMBIA

The Links at Columbia.....	573.474.4399
----------------------------	--------------

OKLAHOMA

BIXBY Tulsa suburb

The Links on Memorial I/II.....	918.369.6055
---------------------------------	--------------

BROKEN ARROW Tulsa suburb

The Greens at Broken Arrow I/II.....	918.355.0802
The Greens at Broken Arrow III.....	918.355.0802
The Greens on Aspen.....	918.872.8899

CLAREMORE

Deer Run.....	918.343.7326
---------------	--------------

OWASSO

The Greens at Owasso I/II.....	918.274.4800
The Greens at Owasso III/IV.....	918.376.4244

STILLWATER

The Links at Stillwater.....	405.372.9910
The Greens at Stillwater.....	405.372.9910

OKLAHOMA CITY

The Greens at Lake Overholser.....	405.494.9888
The Greens at Oklahoma City.....	405.602.5208
The Links at Oklahoma City.....	405.936.9211
The Trails at Rockwell.....	405.604.3583

NORMAN OKC

The Links at Norman.....	405.321.3430
The Greens at Norman.....	405.321.3430

EDMOND OKC

The Greens at Coffee Creek.....	405.216.3642
---------------------------------	--------------

MOORE OKC

The Greens at Moore.....	405.794.0062
The Fairways at Moore.....	405.895.6127

YUKON OKC

The Links at Mustang Creek.....	405.577.5151
The Greens at Mustang Creek.....	405.577.5151



Drive Sweet Success in the NEW YEAR with America's Leading Snack Cake Brand!

McKee Foods Corporation, manufacturer of America's # 1 snack cakes, Little Debbie®, located in Gentry, AR, is taking applications for:

Long Haul Drivers

- Experienced OTR driver with at least 18 months OTR experience
- Safe driving record
- Current Class A CDL
- Current DOT physical
- At least 23 years old
- Willing to drive team
- Don't mind a physically demanding job



As a driver on our team, you will enjoy perks like:

- Stable, competitive pay scale
- Excellent benefits, including medical, dental, 401(k), profit-sharing and fitness center
- A work environment that is clean, safe and tobacco-free
- Promotion opportunities for high performers

\$3,500 Sign-On Bonus

Apply on-line at:
mckeefoods.com

or scan the QR Code →



EOE, including disability/veterans