

JOB GUIDE

Jobs in Northwest Arkansas • Southwest Missouri • Tulsa Metro



Join our Team!

Sign on Bonus up to \$2000 over first 6 months of employment for newly hired employees!

Orientations Daily!

Relocation Assistance | Paid Weekly | Company provided lunches



- **Production Openings: Evening Shift**
| Pay up to \$22/hr
- **Sanitation Openings: Overnight Shift**
| No experience needed
| \$17/hr with available \$1/hr weekly attendance bonus
- **Sanitation Supervisor: Overnight Shift**
| Must have previous supervisor experience of 20+ people, bilingual English/Spanish is a plus, experience in food production sanitation is a plus. Salary of up to 60k/yr DOE. This is a 3rd shift position, must be able to work weekends and holidays.
- **Maintenance Openings:**
 - Industrial Maintenance Technicians
 - Welders
 - Certified Electrical Technicians| Pay rates up to \$35/hr - DOE

Se Habla Espanol | EOE

Apply Now!

southeastpoultry.com

**Or pick up an application at:
2200 Town West Dr.
Rogers, AR 72756**

Issue

Volume 34 Issue 04
Feb. 18 - Mar. 03, 2022

Advertise

thejobguide.com
800-654-9776

Free

Woman Owned

Starting Pay Up To \$21/hr!

Hourly pay starts at \$20/hr for A shift and \$21/hr for B shift.

Relocation + Housing Assistance
Overtime Available
No Sundays
On-Site Cafeteria

text **TRIUMPH** to **97211** to apply

TriumphFoods.com/Apply
5302 Stockyards Expy,
St Joseph, MO 64504

Triumph for your future.



Triumph Foods

Notice to our Advertisers and Readers:

Job Guide, LLC is not responsible for ad contents, products or services offered. **Job Guide, LLC** reserves the right to reject advertising it deems unsuitable and liability does not exceed the cost of the advertisement placed. Any reproductions of the contents of this publication without the written consent of Job Guide, LLC is strictly prohibited.

Printing:
Stigler Printing

Distribution:
Job Guide, LLC
Arkansas Rack Co.
Distributech

Contact:
PO Box 813
Rogers, AR. 72757
800-654-9776

Sunny Martinez, CEO
sunny@thejobguide.com



@thejobguide88



@thejobguide88



/company/the-job-guide



 The Clorox Company

Rogers, AR plant
Now accepting applications for:

Human Resources Generalist

Scan the QR Code to
View Job & Apply Online!



The Clorox Company is an Equal Opportunity Employer, including disability and veterans



Cryovac®, Inc. a business brand of Sealed Air Corporation, is a leading global manufacturer of protective food packaging.

We are seeking talented operators to help us maintain our position as a leader in the Packaging Industry.

Extrusion, Printing, and Converting Operator Night Shift Openings

Openings are for, 12 hour night shifts, on a 2-2-3 work schedule, 6:30pm – 6:30am. As well as for, 8 hr Mon-Fri shifts.



NEW Entry Level Pay: \$20.10 and at one year to \$21.35, Plus \$1.00/hr shift premium. Wage potential to \$25.00+

Are you looking for a:

- Paid leave for maternity, paternity, and elder care
- 3 weeks vacation awarded on 4th year (not 5th year)
- Year round climate controlled facility
- Competitive salary
- Profit sharing, 401K match, HSA employer contributions
- Good people to work with

Desired Skills:

- Ability to work with others
- Flexibility for meeting customer needs
- Good basic Math and Measurement skills
- Troubleshooting skills
- Computer skills with data entry and/or SAP experience
- Bagmaking, Extrusion or Printing equipment experience a plus!

The operations facility in Rogers, AR is accepting applications at:

www.sealedair.com/careers

Equal Opportunity Employer
M/F/V/D



MoistureShield
COMPOSITE DECKING

**NOW
HIRING!**



Join Our Springdale, AR Team!

- **Machine Operators/
Operadores de Maquina**
- **Extrusion Operators/
Operador de Extrusión**
- **Maintenance Techs/
Mecánicos**
- **Quality Techs/Control de
Calidad**
- **General Labor/Producción
General**

We Offer/Ofrecemos:

- **3 1/2 Day Work Week/Semana de 3
dias y medio**
- **Competitive Wages & Benefits/Pago y
Beneficios Competitivos**
- **Bonus Earning Potential/Potencial
de Bonos**
- **Day and Night Openings/Posiciones
de Dia y Noche**
- **Advancement Opportunities/
Oportunidades de Crecimiento**

Apply online/Aplique en línea en:

<https://jobs.crh.com>

Search/ Busque: "MoistureShield"

Apply onsite/Aplique en Persona:

Mon/Lunes – Fri/Viernes: 9 am – 4 pm

**801 N. Jefferson St.
Springdale, AR 72764
479-750-1299**

Equal Opportunity Employer and Drug Free Workplace



The University of Arkansas,
Fayetteville offers employment
opportunities in the fields of:
Maintenance ▪ Custodial ▪
Computer Technical ▪ Clerical

Current Opportunities Include:

- Administrative Specialist II
- Assistant Business Manager
- Bus Operator (Current and Anticipated Future
Openings)
- Business Support Manager for Academic Affairs
- Development Specialist: Matching Gifts
- Fiscal Support Analyst
- Gift Services Processor
- GSIE Student Applications Specialist
- ISA-Athletic Facilities Maintenance Worker
- Online Student Orientation Specialist
- Payroll Coordinator
- Program Coordinator
- Service Assistant (Current and Anticipated Future
Openings)
- Speech and Hearing Clinic Office Manager/Fiscal
Support Analyst

The University of Arkansas provides one of the most
comprehensive and competitive benefit packages in the region.

- | | | |
|---------------------|----------------------|-----------------|
| • Health Coverage | • Paid Holidays | • Short & Long |
| • Dental Coverage | • Sick Leave | Term Disability |
| • Prescription Drug | • Vacation Leave | • Employee |
| • Retirement | • Catastrophic Leave | Assistance |
| • Basic Life | • Family & Medical | Program and |
| • Optional Life | Leave | More! |
| • Tuition Reduction | • Vision | |



UNIVERSITY OF
ARKANSAS

The University of Arkansas has an in-house temporary employment staffing service called RazorTemps. Apply to this posting if you are interested in being considered for temporary employment opportunities. These positions vary in length and often provide a 'foot in the door' to permanent employment at the University.

The University of Arkansas recognized the challenge of balancing work with personal life, and we pro actively look for ways to help our employees do well at both aspects of their lives. This includes creating health insurance and retirement plans that work well; offering work-time options where possible; promoting career and personal development; and giving paid leave for holidays, illness, vacations, children's educational activities and military duty, among others.

As we strive to represent the best of public higher education, advance Arkansas and build a better world by providing transformational opportunities and skills, promoting an inclusive and diverse culture, nurturing creativity, and solving problems through research and discovery, the University of Arkansas provides excellent opportunities for professional service and that you can be a part of the worthwhile advancement of the University. We believe in fostering a collaborative and innovative culture among our diverse faculty staff and students that promotes a healthy balance.

To apply for above positions, please visit our website at:

<https://uasys.wd5.myworkdayjobs.com/UASYS>

For more information, please contact us at 479.575.5351.

The University of Arkansas is an Equal Opportunity-Affirmative Action Institution.



Drivers Needed

Full and Part-time Routes Available

Excellent Benefits:
Health, Vision, Dental, Paid Holidays, Paid Vacations, Retirement with employer match
Women & Minorities are encouraged to apply

Apply today at: www.ozark.org

For more information call
479-361-8741 or 479-361-8752
or email: thill@ozark.org
2423 E Robinson, Springdale, AR



Pre-employment physical, drug test and background check.
An Equal Employment Opportunity Employer

WE'RE



Hiring!

Lassonde

LASSONDE PAPPAS
AND COMPANY, INC.

**NOW OFFERING: \$1000 SIGN ON BONUS
THROUGH 03/31/2022!**

A world leader in the production of fruit juice and related products, NOW HIRING in ALL DEPARTMENTS in our Springdale, AR facility:

- **PRODUCTION**
- **WAREHOUSE**
- **BATCHING**

- **NEW Starting Pay:** \$16.50/hr + performance increase after 90 days
- **6pm-6am** 2-3-2 shift pattern
- **Benefits 1st of the month** following 30 days of employment
- **Vacation and PTO pro-rated** for 2022

APPLY ONLINE:

[HTTPS://LASSONDEPAPPAS.COM/CAREERS](https://lassondepappas.com/careers)

EEO/AAP

WE'RE HIRING! Refrigeration Mechanic HVAC

Full Time 3rd Shift & Weekend Shifts

Duties include the repair and maintenance of rooftop and split system HVAC units, spot coolers, window units, process chillers, screw compressor refrigeration units, cooling towers, ice machines, cooling rooms and freezers, warehouse heaters and supply and exhaust fans.

3RD SHIFT:

Sunday – Thursday:
10:00 pm – 6:20 am

WEEKEND SHIFT:

Thursday – Saturday:
10:00 pm – 10:30 am
Sunday: 10:00 pm – 8:30 am



TEAM MEMBER PERKS:

- 401 (k) Matching & Profit Sharing
- Insurance for Full & Part-time
- Paid Time Off
- 24/7 on-site Fitness Center
- On-site Clinic
- *EOE including Disability/Veterans*

THESE POSITIONS OFFER:

- Hiring Bonus: \$1,500
- Competitive Pay Scale: \$22.00 – \$28.95 DOE
- +\$2 per Hour for 3rd shift
- Weekend Premium: +\$1.10 per Hour and +\$4.84 for Hours in Weekend Zone Friday – Sunday

Apply online:
mckeefoods.com
or scan the
QR Code:



McKee Foods Corporation
Gentry, AR

McKee Foods is best known
for our line of snack cakes.





WE ARE HIRING

Join our team in Bentonville, AR!

Operations and Warehouse Positions Available

Forklift and Machine Operators starting at **\$15** per hour plus differential pay depending on the shift.

Excellent benefits after 60 days of employment. Medical, Dental, Vision, 401K etc..

Outdoor Cap is an equal opportunity employer.

For full job descriptions and to apply, please visit: www.outdoorcap.com/careers or scan QR code.



NOW HIRING! Springdale Public Schools

is now accepting applications for Part-Time and/or Full-Time



BUS DRIVERS

- 8 paid holidays
- Teacher Retirement benefits available for full-time employees.
- Other duties may be available with additional pay.
- **Paid Training is available.**

Beginning Drivers starting pay \$71.47 per day (w/no exp.)

Refer to transportation salary schedule online for complete pay scale

Apply in person at **1612 E. Emma Ave, Springdale, AR 72764**

Or applications are available online:

apply.sdale.org

Click the Apply Now tab - Bus Driver Position

Or call Transportation Dept. for more info @ **479-750-8830**

NWACC Adult Education

- GED: High School Equivalency
- ESL: English as a Second Language
- College Prep for Math and Literacy
- Career Education
- Employability Skills Training
- WAGE I

All Services are FREE



NWACC ADULT EDUCATION

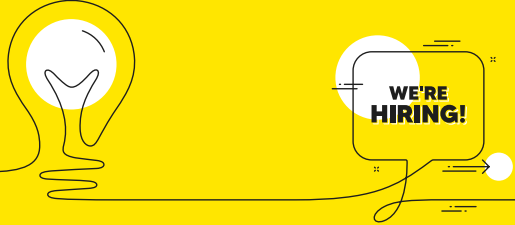
NORTHWEST ARKANSAS
COMMUNITY COLLEGE
Maximize Potential.
Exceed Expectations.

Shewmaker Center for Workforce Technologies
1000 S.E. Eagle Way, Bentonville AR 72712

What is Your Next Step?

To Connect with Us, email: **askadulted@nwacc.edu**

NWACC Adult Education provides access to all programs and activities. Must be 18 Years or older to participate. Paid for with funds from the Arkansas Department of Career Education, Adult Education Division.



Pay Rates Ranging from:
\$15.10/hr - \$18.25/hr

Cargill Offers:

- Competitive Wages & Weekly Bonus Programs
- Overtime available
- Paid vacation and holidays
- Full Benefit package including medical, dental, vision and 401K

HIRING
★ Bonus ★

\$1,200 Sign-On Bonus!
Weekly Attendance Bonus!

Apply online:

www.cargill.com/springdale

Cargill is an Equal Opportunity Employer, including Disability/Vet. Drug Free Employer



Taking applications for:
Maintenance Tech
3rd Shift

Weekly bonuses

+

\$1,200 Sign-On Bonus!

Cargill Offers:

- Competitive Wages & Weekly Bonus Programs
- Overtime available
- Paid vacation and holidays
- Full Benefit package including medical, dental, vision and 401K

Apply online:

cargill.com/springdale

Cargill is an Equal Opportunity Employer, including Disability/Vet. Drug Free Employer



AFFORDABLE QUALITY TRAINING

- Certified Nursing Assistant
- Medical Assistant
- Dental Assistant
- Limited Licensed Radiologic Technologist
- Medical Billing & Coding / Insurance Specialist
- Pharmacy Technician
- Phlebotomy Technician
- Veterinary Assistant
- EKG Technician

PetraAlliedHealth.com | 479-750-9876

Licensed by Arkansas Division of Higher Education



Soft Skills Series

Free Educational Event | Three Sessions

Work Life Balance - February 1

Presentation Skills - February 15

Delivering Constructive Criticism - March 1

Soft skills are often overlooked but are necessary in everyday life. The Rogers-Lowell Area Chamber of Commerce is pleased to partner with **Business and Industry Training (BIT)** to offer this three-part **Chamber to Community (C2C) Series**.

Attending all three programs will result in receiving a **soft skills certificate** from BIT

Learn More and Register at

www.RogersLowell.com



If you have a love for helping others, We want to talk with you!

Become a
Personal Care Assistant

- Earn bonuses
- Have paid holidays
- Work up to **40 hours per week**
- Have a flexible part-time work schedule
- Participate in voluntary benefits programs - Including participation in 403(b) retirement plans.
- This is a Safety-Sensitive job for purposes of the AR M.M.A.

40-HOUR SCHEDULES!

Offering ONLINE Training!

We provide **FREE 40-hour Personal Care Training ONLINE!** Check our website for more information.

Apply on-line:
aaanwar.org/Employment

EEO | Employer/AA/M/F/Vet/Disabled
Employment subject to background check and drug screening.




Circle of Life seeking experienced, compassionate candidates to join our TEAM!

- Admissions RN (PT, Weekend)
- Administrative LPN (FT)
- After Hours RN (PT)
- Clinical Team Lead (Weekend)
- CNA Inpatient (PRN & FT)
- CNA Outpatient (FT)
- Community Outreach Liaison (bi-lingual required)
- Director of Inpatient Services
- Hospital Liaison RN (Weekend)
- LPN Weekend (PT)
- Major Gift Officer/Fundraising Officer
- Night Call Nurse (PRN)
- RN Case Manager (FT Outpatient)
- Staff RNs (Full Time & PRN)
- Unit Administrative Assistant (Part Time & PRN)

CIRCLE of LIFE HOSPICE

Apply online at: **nwacircleoflife.org**
Contact Human Resources at: 479-872-3366 or 479-872-3397

Earlene Howard Hospice Home
901 Jones Road | Springdale, AR 72762

Marie & John Carr Hospice Home
1201 NE Legacy Parkway | Bentonville, AR 72712
Drug Free Workplace Equal Opportunity Employer



HELP WANTED

Highest Pay in the Area!

Full Time & Part Time Assignments

RNs, LPNs, CNAs & Home Care Aides

Great Pay and Benefits:

Pay Advances • Direct Deposit • Uniform Discounts
• Flexible Schedules • Health Insurance and much more!

PRN Medical Services

Apply online 24/7 at:
www.prnmedstaff.net

Or Apply In Person:
4400 S. Thompson St.
Springdale, AR
479.756.8701

Providing opportunities for the Best Employees Since 1990!



Caring Super Star
TOP RATED ON CARING.COM

CAREGIVERS NEEDED

- Flexible Schedules & Locations
- Incentive time off
- Competitive wages
- Caregiver referral bonuses
- 401k/Health/Dental/Vision Insurance
- Unique Assignments
- Specialized training
- Direct Deposit
- Assignments cover all of NW AR

- **\$11 - \$15/HR DEPENDENT ON ASSIGNMENT**
- **NO EXPERIENCE REQUIRED**
- **PAID TRAINING PROVIDED!!**

WALK-IN WEDNESDAY!
APPLY IN PERSON AND INTERVIEW ON THE SPOT!

Right at Home
In Home Care & Assistance

Apply in person:
3190 Bella Vista Way
Bella Vista, AR 72714

Contact US today @ 479-855-6000 for more information

Apply Online: **rah-ar.com**



Become part of the company that is putting the **CARE** back into **HealthCARE!**

First Call, your Medical Staffing and Home Care Specialist, has needs for RNs, LPNs, CNAs and CHHAs for both part-time and full-time assignments **NEW PAY RATES** up to:

RNs \$49.00 | CNAs \$26.00
LPNs \$39.00 | CHHAs \$18.00



First Call knows I work hard.
First Call knows I care.
First Call knows...*I'm Amazing!*

First Call®

Your Staffing Source.

Apply online at: **My-FirstCall.com**

Drug testing required. Some restrictions apply.

Come See Us!

4125 S. Sheridan Rd
Tulsa, OK 74145
918.665.1011

7925 N. May Ave
Oklahoma City, OK
73120
405.842.7775

3354 S. National Suite D
Springfield, MO 65807
417.886.1001



Sharpe

**Need individual health insurance?
Or employer group health insurance?
I Can Help!**



With thousands of plans from nationally recognized companies and personal service, finding the right coverage has never been easier.



Call me at **918-376-0194**
for your **FREE Quote Today!**

HealthMarkets Insurance Agency
Health | Medicare | Employer Group | Life | Supplemental



Rick Thomas
Licensed Independent Insurance Agent
918-376-0194

health
markets.

rthomas@healthmarkets.com

Premiums charged by a carrier for a particular insurance product must be consistent, regardless of whether you buy it from HealthMarkets Insurance Agency, from a competing agency or directly from the insurance company. HealthMarkets Insurance Agency, Inc. is licensed as an insurance agency in all 50 states and the District of Columbia. Not all agents are licensed to sell all products. Service and product availability varies by State. HMIA007244 9/2019

TAHRA

Tulsa Area HUMAN RESOURCES Association

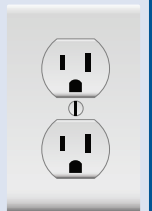
www.tahra.org • admin@tahra.org • 918-344-4622

GET PLUGGED IN!

- Affiliate of the Society for Human Resource Management (SHRM)
- With 500+ members, we are the largest HR chapter in Oklahoma
- Membership benefits include:
 - Monthly program meetings featuring top local and national speakers
 - Learning labs
 - Seminars
 - Networking events
- And more!

JOIN us @ **TAHRA.ORG**

AFFILIATE OF
SHRM
SOCIETY FOR HUMAN
RESOURCE MANAGEMENT





**WE ARE
HIRING!**

Join Our Team



A CRH COMPANY



STANDARD MATERIALS GROUP
A CRH COMPANY



A CRH COMPANY

CRH is the leading local distributor for products such as rock and asphalt as well as a road construction company. Many of our positions are designed to train you on the job with little to no experience required. APAC, Standard Materials and Arkhola are part of the CRH family.

APAC/SMG - AR Openings for NW AR

Contact: (479) 684-5005 or (479) 263-2177 for details.

Se Habla Español

Potential Sign On Bonus of up to \$1,500!!!!

- Construction
- Aggregates
- Ready Mix Local Drivers (CDL)
- Field
- Office Personnel

Opportunities Range from Entry Level to Experienced Professionals

Arkhola Openings for Fort Smith, AR

Contact Marsha Hayes at: (479) 788-6365 for details.

Potential Sign On Bonus of up to \$1,500!!!!

- Asphalt Ground Laborer
- Heavy Equipment Operator
- QC Lab Tech
- 2nd Shift Quarry Workers
- Ready Mixer Drivers

APAC Openings for Muskogee, OK

Contact Marsha Hayes at: (479) 788-6365 for details.

Potential Sign On Bonus of up to \$1,500!!!!

- Asphalt Superintendent
- Class A Heavy Haul Truck Drivers
- Construction Heavy Equipment Operator
- Construction Laborer
- Dirt Crew Foreperson
- Ready Mixers Drivers
- Shop Mechanic

APAC Oklahoma Openings for Tulsa, OK

Contact Lisa Chapman at: (918) 556-2236 for details.

- Asphalt Plant Mechanic
- CDL A Dump Truck Driver
- Construction Laborer
- Construction Heavy Equipment Operator
- Concrete Finisher
- Facilities Maintenance
- Quarry Equipment Operator
- Quarry Maintenance
- Quarry Worker

SMG - Oklahoma Openings for Tulsa, OK

Contact Lisa Chapman at: (918) 556-2236 for details.

- Diesel Mechanic
- Class A Bulker Driver
- Class A Dump Driver
- Plant Operator- Vinita, OK and Claremore, OK
- Ready Mix Drivers

You may apply online for any of the above positions and see more listings at:

<https://www.crhamericas.com>

Competitive Wages, Benefits and Excellent Safety Culture!

APAC Central Inc. is an Affirmative Action and Equal Opportunity Employer



workatsimmons.com

We're Hiring!



✓ **\$14** /hr
 Part-Time Opportunities
 Multiple shifts + Including Saturdays only

✓ **Hiring Bonus**
+\$0.50 /hr
 for Night Shift
 (all locations)



Build Your Paycheck

- ✓ Vacation Matching
- ✓ Referral Bonuses
- ✓ First 6 Months = Vacation Pay



Simmons Care Clinics

- ✓ High-Quality Healthcare
- ✓ Team Members & Families
- ✓ Free Generic Prescriptions



Education Financial Aid

- ✓ Tuition Reimbursement
- ✓ Leadership Development
- ✓ On-The-Job Training

Prepared Foods

Prepared Foods

Animal Nutrition

Pet Food

*Gentry, AR
 Southwest City, MO
 Van Buren, AR*

Van Buren Cook

*Siloam Springs, AR
 Southwest City, MO*

Siloam Springs, AR

Day & Night Shift

New Shift

Day & Night Shift

Day Shift

- Production
- Maintenance

- Expansion
 Coming Soon

- Utility Production
- Maintenance
- Operators

- Utility
- Maintenance
- Refrigeration

NWA Hiring Center

2998 Hwy 412 East, Ste 80
 Siloam Springs, AR 72761
(844) 400-9357 Option 3

SWC Hiring Center

10700 S. State Hwy 43
 Southwest City, MO 64863
(417) 762-3271 Option 3

Fort Smith Hiring Center

4900 Rogers Ave., Suite 103 D
 Fort Smith, AR 72903
(479) 262-5390 Option 3

See enhanced safety measures here: simmonsfoods.com/covid19-measures

EEO

WE'RE HIRING! Refrigeration Mechanic HVAC

Full Time 3rd Shift & Weekend Shifts

Duties include the repair and maintenance of rooftop and split system HVAC units, spot coolers, window units, process chillers, screw compressor refrigeration units, cooling towers, ice machines, cooling rooms and freezers, warehouse heaters and supply and exhaust fans.

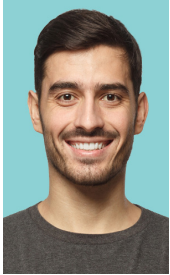
3RD SHIFT:

Sunday – Thursday:
10:00 pm – 6:20 am

WEEKEND SHIFT:

Thursday – Saturday:
10:00 pm – 10:30 am
Sunday: 10:00 pm – 8:30 am

Apply online:
mckeefoods.com
or scan the
QR Code:



TEAM MEMBER PERKS:

- 401 (k) Matching & Profit Sharing
- Insurance for Full & Part-time
- Paid Time Off
- 24/7 on-site Fitness Center
- On-site Clinic
- EOE including Disability/Veterans •

THESE POSITIONS OFFER:

- Hiring Bonus: \$1,500
- Competitive Pay Scale: \$22.00 – \$28.95 DOE
- +\$2 per Hour for 3rd shift
- Weekend Premium: +\$1.10 per Hour and +\$4.84 for Hours in Weekend Zone Friday – Sunday



McKee Foods Corporation
Gentry, AR

McKee Foods is best known
for our line of snack cakes.



MARTINEZ
SPORTS CARDS

BASKETBALL CARDS
BASEBALL CARDS
FOOTBALL CARDS

www.martinezsportscards.com

Don't miss upcoming networking events from the Rogers-Lowell Area Chamber of Commerce

TUESDAY, MARCH 8
at Promenade Commons
750 S. Promenade Blvd. | Rogers

THURSDAY, MARCH 17
at Matrix Racquet Club
1219 Mills Ln. | Lowell

COFFEE
COLLATION
ROGERS-LOWELL AREA Centennial

BUSINESS
After Hours
ROGERS-LOWELL AREA Centennial

Visit www.RogersLowell.com for more information

SAVE THE DATE

Northwest Arkansas
NOARK
Human Resources Association, Inc.

March 2022 NOARK Membership Meeting:

Join Us! March 10, 2022
11:30 am - 1 pm

Arkansas Blue Cross Blue Shield Springdale - NWA Corporate Center
5288 W Don Tyson Pkwy | Springdale, AR 72762

Save the Date! Come Join Us for this In-Person Event. Register Today!

Register @ www.noark.org

AR SHRM
Arkansas SHRM State Council, Inc.

info@noark.org
479-305-2466

AFFILIATE OF
SHRM
BETTER WORKPLACES
BETTER WORLD™



The Clorox Company

Rogers, AR plant
Now accepting applications for:

Human Resources Generalist

Scan the QR Code to
View Job & Apply Online!

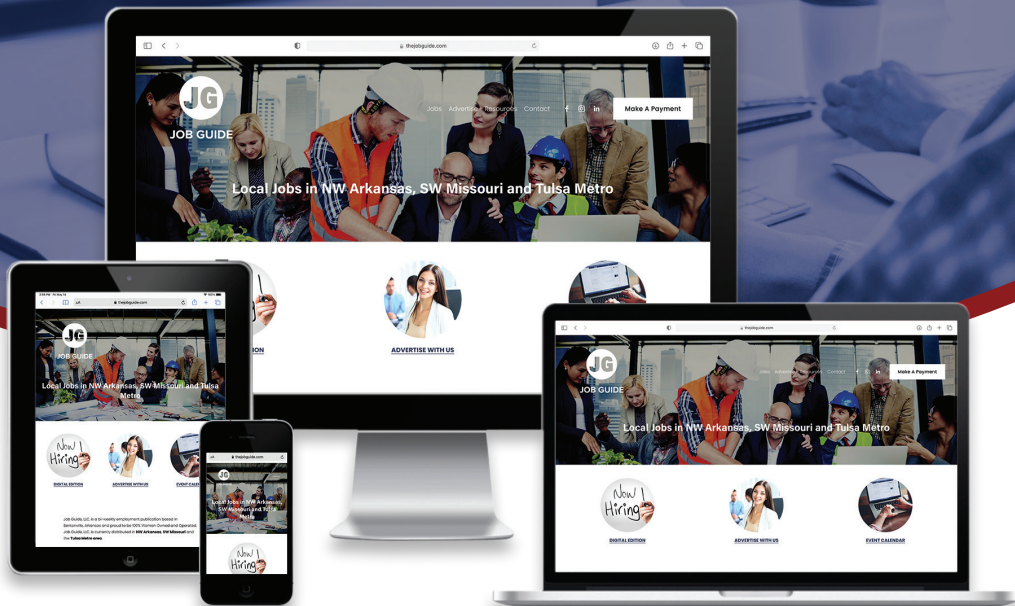


The Clorox Company is an Equal Opportunity Employer, including disability and veterans



MARTINEZ AGENCY

Let Us Help You Build Your Brand



Our Services

Digital

Web Design / Development
E-Commerce Development
Social Media Marketing
Digital Advertising

Creative

Creative Collateral
Package Design
Digital / Social Content
Photography

Branding

Strategy Development
Logo Design / Identity
Brand Architecture
Naming & Taglines

866-641-7692

martinez-agency.com

[@martinezagency](https://twitter.com/martinezagency)

Lindsey Management Co., Inc. provides management services to the multifamily apartment properties listed. Thinking about a new career; property management may be a good field to consider.

We are currently hiring assistant managers, leasing consultants & maintenance techs at various properties. These positions are key to the successful management of apartment properties and are positions that can lead to management. Please visit our website. EOE

www.LindseyMgmt.com

Go to Career Opportunities > Apartment Employment > Apply Now. 



ARKANSAS - NORTHWEST ARKANSAS

FAYETTEVILLE

Appleby.....	479.443.9258
Chestnut II.....	479.521.6895
The Cliffs I.....	479.582.2540
The Cliffs II.....	479.444.0400
Cornerstone I/II.....	479.443.3507
Crafton Place/Starrfire.....	479.521.6895
Crossover Terrace.....	479.443.9744
East Oaks/Oakshire I/II.....	479.443.7278
Fair Park.....	479.587.9395
The Greens at Lakeside Village.....	479.442.7663
Lakeside Village.....	479.443.9022
The Links at Fayetteville.....	479.966.4340
The Greens at Fayetteville.....	479.966.4340
The Fairways at Fayetteville.....	479.966.4340
Markham Hill.....	479.443.9333
Paradise View.....	479.521.8299
The Park I/II.....	479.443.9804
Shiloh.....	479.442.4384
Southern View I/II.....	479.443.6698
Stearns Street/Vantage Center.....	479.527.9851
Valley Lake.....	479.444.9744

SPRINGDALE

Bridgestone.....	479.751.8866
Eastwood.....	479.927.0676
Johnson Meadows.....	479.756.1312
The Trails at the Crossings.....	479.717.6868
The Links at Springdale I/II.....	479.750.1515
Station.....	479.756.1312
Sunset I/II/Holcomb.....	479.750.3030
Walnut Tree.....	479.751.8866
West End Place/Pleasant Point.....	479.750.3030

LOWELL

The Links at Lowell.....	479.770.2100
--------------------------	--------------

ROGERS

Brentwood I/II.....	479.631.5800
Briarwood.....	479.631.5800
Doubletree I/II.....	479.631.5800
Edgewood.....	479.631.5800
The Fairways at Lost Springs.....	479.621.0277
The Greens at Lost Springs.....	479.631.6515
The Greens on Blossom Way.....	479.631.2024
Lost Springs.....	479.621.9399
Turtle Creek I/II/Park.....	479.631.1444

BENTONVILLE

Copperstone I/II.....	479.271.9300
Delmar.....	479.273.5283
The Links at Bentonville.....	479.271.0205
The Links at Rainbow Curve.....	479.657.6446
The Trails at Bentonville.....	479.657.6633
Moberly Manor I/II.....	479.273.2540
Moberly Place.....	479.273.3533
Walton Crossing.....	479.268.4237

SILOAM SPRINGS

Spring Valley I/II.....	479.549.3213
-------------------------	--------------

ARKANSAS—REST OF STATE

BENTON

Dogwood Lakes.....	501.794.3000
Fountain Lakes.....	501.778.3134
The Greens at Longhills.....	501.860.6968

BRYANT

The Fairways at Hurricane Creek.....	501.847.7747
The Greens at Hurricane Creek.....	501.847.2586
The Lakes at Hurricane Creek.....	501.847.6178

CONWAY

Centennial Valley I/II.....	501.513.2555
The Fairways at Nutters Chapel.....	501.205.8230
Fox Run.....	501.327.8739
Germantown.....	501.329.0767
The Greens at Nutters Chapel.....	501.450.7056
Lake Pointe.....	501.336.0900
The Links at Cadron Valley.....	501.513.0000
Salem Park.....	501.329.5900
Westlake.....	501.513.9392

FORT SMITH

The Links at Fort Smith.....	479.648.8080
Pike Place.....	479.782.6686

HARRISON

The Links at Harrison.....	870.365.3620
----------------------------	--------------

JONESBORO

Gladiola Estates/Gladiola Manor.....	870.933.8333
The Greens at Jonesboro.....	870.275.6525
The Links at Jonesboro.....	870.275.6525
Park Lake.....	870.933.8333

LITTLE ROCK

The Links at Eagle Hill.....	501.407.9088
Eagle Hill.....	501.455.8818
Eagle Nest.....	501.407.0567
Westwood I/II.....	501.455.8862

NORTH LITTLE ROCK

The Greens at the Rock.....	501.753.1200
The Links at the Rock.....	501.812.5020

MARION

The Fairways at Marion I/II/III.....	870.739.4949
The Greens at Marion I/II.....	870.739.6300

PARAGOULD

Silverwood.....	870.239.3815
-----------------	--------------

RUSSELLVILLE

Shadow Lake.....	479.967.5584
Spring Lake I/II.....	479.858.7079

SEARCY

Meadow Lake I/II.....	501.268.3355
-----------------------	--------------

SHERWOOD

The Links at Sherwood.....	501.833.8010
----------------------------	--------------

TEXARKANA

The Links at Texarkana.....	870.773.2295
-----------------------------	--------------

ALABAMA

TUSCALOOSA

The Greens at Tuscaloosa I/II.....	205.342.3339
The Links at Tuscaloosa.....	205.247.9978

AUBURN

The Greens at Auburn.....	334.821.4061
The Fairways at Auburn I/II.....	334.209.1850

KANSAS

DERBY

The Greens at Derby I/II.....	316.788.3060
The Fairways at Derby.....	316.788.1028
The Links at Kansas.....	785.841.3868
The Links at Manhattan.....	785.539-8448

SHAWNEE

The Greens at Shawnee.....	913.422.8295
----------------------------	--------------

MISSISSIPPI

OXFORD

The Links at Oxford.....	662.513.4949
--------------------------	--------------

CANTON

The Greens of Madison County.....	601.391.3464
The Links of Madison County.....	601.859.5551
The Trails at Madison County.....	601.436.4707

STARKVILLE

The Links at Starkville.....	662.338.1801
------------------------------	--------------

MISSOURI

JOPLIN

Tanglewood.....	417.623.3336
-----------------	--------------

SPRINGFIELD

The Greens at Springfield.....	417.833.3261
--------------------------------	--------------

GRANDVIEW

Grand Summit Apartments.....	816.331.3968
The Fairways at Grand Summit I/II.....	816.425.4059

COLUMBIA

The Links at Columbia.....	573.474.4399
----------------------------	--------------

OKLAHOMA

BIXBY Tulsa suburb

The Links on Memorial I/II.....	918.369.6055
---------------------------------	--------------

BROKEN ARROW Tulsa suburb

The Greens at Broken Arrow I/II.....	918.355.0802
The Greens at Broken Arrow III.....	918.355.0802
The Greens on Aspen.....	918.872.8899

CLAREMORE

Deer Run.....	918.343.7326
---------------	--------------

OWASSO

The Greens at Owasso I/II.....	918.274.4800
The Greens at Owasso III/IV.....	918.376.4244

STILLWATER

The Links at Stillwater.....	405.372.9910
The Greens at Stillwater.....	405.372.9910

OKLAHOMA CITY

The Greens at Lake Overholser.....	405.494.9888
The Greens at Oklahoma City.....	405.602.5208
The Links at Oklahoma City.....	405.936.9211
The Trails at Rockwell.....	405.604.3583

NORMAN OKC

The Links at Norman.....	405.321.3430
The Greens at Norman.....	405-321-3430

EDMOND OKC

The Greens at Coffee Creek.....	405.216.3642
---------------------------------	--------------

MOORE OKC

The Greens at Moore.....	405.794.0062
The Fairways at Moore.....	405.895.6127

YUKON OKC

The Links at Mustang Creek.....	405.577.5151
The Greens at Mustang Creek.....	405.577.5151

WE'RE HIRING

join our team

Drive Sweet Success with America's Leading Snack Cake Brand!



McKee Foods Corporation, manufacturer of America's # 1 snack cakes, Little Debbie®, located in Gentry, AR, is taking applications for:

Long Haul Drivers

- Experienced OTR driver with at least 18 months OTR experience
- Safe driving record
- Current Class A CDL
- Current DOT physical
- At least 23 years old
- Willing to drive team
- Don't mind a physically demanding job

As a driver on our team, you will enjoy perks like:

- Stable, competitive pay scale
- Excellent benefits, including medical, dental, 401(k), profit-sharing and fitness center
- A work environment that is clean, safe and tobacco-free
- Promotion opportunities for high performers



Apply on-line at:

mckeefoods.com

or scan the
QR Code →



EOE, including disability/veterans