

JOB GUIDE

Jobs in Northwest Arkansas • Southwest Missouri • Tulsa Metro



First Call knows I work hard.
First Call knows I care.
First Call knows...*I'm Amazing!*

Become part of the company that is putting the **CARE** back into Health**CARE!**

First Call, your Medical Staffing and Home Care Specialist, has needs for RNs, LPNs, CNAs and CHHAs for both part-time and full-time assignments **NEW PAY RATES** up to:

RNs	CNAs	LPNs	CHHAs
\$49.00	\$26.00	\$39.00	\$18.00

Flexibility • Top Wages • Vacation • Daily Pay • AFLAC • Weekly Pay • Direct Deposit

First Call requires recent work experience and good references.



First Call®

Your Staffing Source.

Apply online at:

My-FirstCall.com.

Drug testing required. Some restrictions apply.

Come See Us!

4125 S. Sheridan Rd
Tulsa, OK 74145
918.665.1011

7925 N. May Ave
Oklahoma City, OK 73120
405.842.7775

3354 S. National Suite D
Springfield, MO 65807
417.886.1001

Issue

Volume 34 Issue 05
Mar. 04 - Mar. 17, 2022

Advertise

thejobguide.com
800-654-9776

Free

Woman Owned



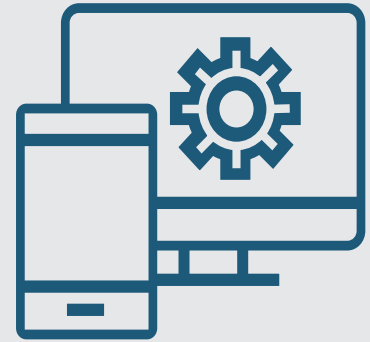
CREATIVE



BRANDING



WEB DEVELOPMENT



Martinez Agency can help you with your next project!

Contact us at: alex@martinez-agency.com or call: 866-641-7692

www.martinez-agency.com

Notice to our Advertisers and Readers:

Job Guide, LLC is not responsible for ad contents, products or services offered. **Job Guide, LLC** reserves the right to reject advertising it deems unsuitable and liability does not exceed the cost of the advertisement placed. Any reproductions of the contents of this publication without the written consent of Job Guide, LLC is strictly prohibited.

Printing:

Stigler Printing

Distribution:

Job Guide, LLC
Arkansas Rack Co.
Distributech

Contact:

PO Box 813
Rogers, AR. 72757
800-654-9776

Sunny Martinez, CEO
sunny@thejobguide.com



[@thejobguide88](https://www.facebook.com/thejobguide88)



[@thejobguide88](https://www.instagram.com/thejobguide88)



[/company/the-job-guide](https://www.linkedin.com/company/the-job-guide)



Circle of Life seeking experienced, compassionate candidates to join our TEAM!

- Administrative Assistant (PT)
- Admissions RN (PT, Weekend)
- Administrative LPN (FT)
- After Hours RN (PT)
- Clinical Team Lead (Weekend)
- CNA Inpatient (PRN & FT)
- CNA Outpatient (FT)
- Community Outreach Liaison (bi-lingual Marshallese required)
- Hospital Liaison RN (Weekend)
- LPN Outpatient
- LPN Weekend (PT)
- Major Gift Officer/Fundraising Officer
- Night Call Nurse (PRN)
- RN Case Manager (FT Outpatient)
- Staff RNs (Full Time & PRN)
- Unit Administrative Assistant (Part Time & PRN)

CIRCLE of LIFE HOSPICE

Apply online at: nwacircleoflife.org
Contact Human Resources at: 479-872-3366 or 479-872-3397

Earlene Howard Hospice Home
901 Jones Road | Springdale, AR 72762

Marie & John Carr Hospice Home
1201 NE Legacy Parkway | Bentonville, AR 72712
Drug Free Workplace Equal Opportunity Employer



Right at Home
In Home Care & Assistance

CAREGIVERS NEEDED

- Flexible Schedules & Locations
- Incentive time off
- Competitive wages
- Caregiver referral bonuses
- 401k/Health/Dental/Vision Insurance
- Unique Assignments
- Specialized training
- Direct Deposit
- Assignments cover all of NW AR

\$11 - \$15/hr Depending on assignment

- **No Experience Required**
- **Paid Training Provided!!**

WALK-IN WEDNESDAY!
APPLY IN PERSON AND INTERVIEW ON THE SPOT!

Apply in person:
3190 Bella Vista Way
Bella Vista, AR 72714

Contact US today @ 479-855-6000 for more information
Apply Online: rah-ar.com

Providing opportunities for the Best Employees Since 1990!

Now Hiring

Full Time & Part Time Assignments
RNs, LPNs, CNAs & Home Care Aides
Highest Pay in the Area!

PRN Medical Services

Great Pay and Benefits:
Pay Advances • Direct Deposit
• Uniform Discounts • Flexible Schedules
• Health Insurance and much more!

Apply In Person:
4400 S. Thompson St., Springdale, AR
479.756.8701

Apply online 24/7 at:
www.prnmedstaff.net

If you are feeling lucky and have a love for helping others. We want to talk with you!

area agency on aging of northwest arkansas

Become a Personal Care Assistant

40-HOUR SCHEDULES!

- Earn bonuses
- Have paid holidays
- Work up to **40 hours per week**
- Have a flexible part-time work schedule
- Participate in voluntary benefits programs - Including participation in 403(b) retirement plans.
- This is a Safety-Sensitive job for purposes of the AR M.M.A.

We provide **FREE 40-hour Personal Care Training ONLINE!** Check our website for more information.

Apply on-line:
aanwar.org/Employment

EEO | Employer/AA/M/F/Vet/Disabled
Employment subject to background check and drug screening.



PETRA
ALLIED HEALTH

**Providing
Quality
Allied Health
Education**

- Certified Nursing Assistant
- Medical Assistant
- Dental Assistant
- Limited Licensed Radiologic Technologist
- Medical Billing & Coding/Insurance Specialist
- Pharmacy Technician
- Phlebotomy Technician
- Veterinary Assistant
- EKG Technician

Call to learn how PETRA can jump start your career today!

800-785-9876
PetraAlliedHealth.com

Licensed by Arkansas Division of Higher Education



NOW HIRING!
**Springdale
Public Schools**
is now accepting applications for
Part-Time and/or Full-Time

BUS DRIVERS

- 8 paid holidays
- Teacher Retirement benefits available for full-time employees.
- Other duties may be available with additional pay.
- **Paid Training is available.**

**Beginning Drivers starting pay \$71.47 per day
(w/no exp.)**
**Refer to transportation salary schedule online for
complete pay scale**

Apply in person at **1612 E. Emma Ave, Springdale, AR 72764**
Or applications are available online:
apply.sdale.org
Click the Apply Now tab - Bus Driver Position
Or call Transportation Dept. for more info @ **479-750-8830**

NWACC Adult Education

All Services are FREE

Appy online here



Shewmaker Center for Workforce Technologies
1000 S.E. Eagle Way, Bentonville AR 72712

- GED: High School Equivalency
- ELL: English for Language Learners
- Career Education
 - WAGE
- TANF & SNAP E&T Services

What is Your Next Step?

To Connect with Us, email: **askadulded@nwacc.edu**

NWACC Adult Education provides access to all programs and activities. Must be 18 Years or older to participate. Paid for with funds from the Arkansas Department of Career Education, Adult Education Division.

OUTDOOR CAP

WE ARE HIRING

Join our team in Bentonville, AR!

Embroidery Positions Available

Embroiders starting at **\$15** per hour plus differential pay depending on the shift.

Excellent benefits after 60 days of employment. Medical, Dental, Vision, 401K etc..

Outdoor Cap is an equal opportunity employer.

For full job descriptions and to apply, please visit: www.outdoorcap.com/careers or scan QR code.





HUNTSVILLE, AR

DAY & NIGHT SHIFT PRODUCTION

Pay Rates starting at:
\$15.90 up to \$16.40!
\$1.50 Pay Increase after 90 days!
\$1.00 Shift Premium!

BONUS RETENTION BONUS EARNING POTENTIAL: **UP TO \$2000**
EOE including Disability/Vets.

Apply Now

careers.butterball.com

Don't have a computer at home?
 Apply onsite using our computers
 Mon.- Fri., 9 a.m.-4 p.m.
 1294 N. College Street, Huntsville, AR
 479-738-2151




rockline®

IS LOOKING FOR Hard working, Dedicated people who make it right

NEW STARTING WAGES OF \$15.50/HR

With the Opportunity to make an additional **\$2.56/HR** with **Quarterly Bonuses**

FLEXIBLE SCHEDULES

BONUS OPPORTUNITIES

LIGHT INDUSTRIAL

CLEAN ENVIRONMENT

Our Current Openings

- **Auxiliary & Machine Operators**
\$15.50 up to \$20.75/HR
- **Forklift Operators**
Starting at \$16.00

- Full Benefit Package including, medical, dental, life insurance, vision and 401K
- Fitness Reimbursement
- Paid Short Term Disability
- Long Term Disability
- Paid Vacation and Holidays
- Opportunity to earn up to \$1200 a quarter on Pay for Performance Bonuses

BENEFITS

- Opportunity to earn additional Bonus based on Individual Performance up to \$600.00 a year
- \$900 a year Perfect Attendance Bonuses
- 6am-6pm 3-4 shift pattern or Night 6p-6a (\$1.00 shift differential for night)
- Comfortable, Clean, and Safe working environment
- Employee Tuition
- Light Industrial work

**COME JOIN US AT OUR JOB FAIR
 TUESDAY 3/8 FROM 8A-2P**

@ ADVANTAGE STAFFING (SPRINGDALE)



Taking applications for: Maintenance Tech 3rd Shift

Weekly bonuses
+
\$1,200 Sign-On Bonus!

Cargill Offers:

- Competitive Wages & Weekly Bonus Programs
- Overtime available
- Paid vacation and holidays
- Full Benefit package including medical, dental, vision and 401K

Apply online:

cargill.com/springdale

Cargill is an Equal Opportunity Employer, including Disability/Vet. Drug Free Employer



Pay Rates Ranging from:
\$15.10/hr - \$18.25/hr

Cargill Offers:

- Competitive Wages & Weekly Bonus Programs
- Overtime available
- Paid vacation and holidays
- Full Benefit package including medical, dental, vision and 401K



\$1,200 Sign-On Bonus!
Weekly Attendance Bonus!

Apply online:

www.cargill.com/springdale

Cargill is an Equal Opportunity Employer, including Disability/Vet. Drug Free Employer



Cryovac®, Inc. a business brand of Sealed Air Corporation, is a leading global manufacturer of protective food packaging.

We are seeking talented operators to help us maintain our position as a leader in the Packaging Industry.

Extrusion, Printing, and Converting Operator Night Shift Openings

Openings are for, 12 hour night shifts, on a 2-2-3 work schedule, 6:30pm – 6:30am. As well as for, 8 hr Mon-Fri shifts.



**NEW Entry Level Pay: \$20.10 and at one year to \$21.35,
Plus \$1.00/hr shift premium. Wage potential to \$25.00+**

Are you looking for a:

- Paid leave for maternity, paternity, and elder care
- 3 weeks vacation awarded on 4th year (not 5th year)
- Year round climate controlled facility
- Competitive salary
- Profit sharing, 401K match, HSA employer contributions
- Good people to work with

Desired Skills:

- Ability to work with others
- Flexibility for meeting customer needs
- Good basic Math and Measurement skills
- Troubleshooting skills
- Computer skills with data entry and/or SAP experience
- Bagmaking, Extrusion or Printing equipment experience a plus!

The operations facility in Rogers, AR is accepting applications at:

www.sealedair.com/careers

Equal Opportunity Employer
M/F/V/D



Drive Sweet Success with America's

Leading Snack Cake Brand!

McKee Foods Corporation, manufacturer of America's # 1 snack cakes, Little Debbie®, located in Gentry, AR, is taking applications for:

Long Haul Drivers

- Experienced OTR driver with at least 18 months OTR experience
- Safe driving record
- Current Class A CDL
- Current DOT physical
- At least 23 years old
- Willing to drive team
- Don't mind a physically demanding job



As a driver on our team, you will enjoy perks like:

- *Stable, competitive pay scale*
- *Excellent benefits, including medical, dental, 401(k), profit-sharing and fitness center*
- *A work environment that is clean, safe and tobacco-free*
- *Promotion opportunities for high performers*

\$3,500 Sign-On Bonus

Apply on-line at:

mckeefoods.com

or scan the QR Code →



****EOE, including disability/veterans****

Spring into Action with your Job Search!

Complete ONE application with Penmac, and be eligible for dozens of area jobs! Penmac offers FREE help finding a job, weekly pay, and affordable benefit options from DAY ONE. Apply online today!

1127 S. Gutensohn Rd., Ste. #110, Springdale, AR
479-408-4448 • penmac.jobs

Penmac

STAFFING



Lassonde

**LASSONDE PAPPAS
AND COMPANY, INC.**

A world leader in the production of fruit juice and related products, Now Hiring in **ALL DEPARTMENTS** in our **Springdale, AR** facility:

Production | Batching | Warehouse

- **NEW** Starting Pay: \$16.50/hr + Performance increase after 90 days
- 6pm-6am 2-3-2 shift pattern
- Benefits 1st of the month following 30 days of employment
- Vacation and PTO pro-rated for 2022



**NOW OFFERING:
\$1000 SIGN ON BONUS
THROUGH 03/31/2022!**

EEO/AAP

<https://lassondepappas.com/careers>



UNIVERSITY OF ARKANSAS

The University of Arkansas, Fayetteville offers employment opportunities in the fields of:

Maintenance ■ Custodial

■ Computer Technical ■ Clerical

Current Opportunities Include:

- Administrative Specialist II
- Building Specialist
- Business Support Analyst (Two Open Positions)
- Event Services Associate
- Financial Aid Analyst
- Financial Aid Specialist
- Fiscal Support Specialist (Two Open Positions)
- Human Resources Analyst
- Institutional Services Assistant

The University of Arkansas has an in-house temporary employment staffing service called RazorTemps. Apply to this posting if you are interested in being considered for temporary employment opportunities. These positions vary in length and often provide a 'foot in the door' to permanent employment at the University.

The University of Arkansas provides one of the most comprehensive and competitive benefit packages in the region.

- Health Coverage
- Dental Coverage
- Prescription Drug
- Retirement
- Basic Life
- Optional Life
- Tuition Reduction
- Paid Holidays
- Sick Leave
- Vacation Leave
- Catastrophic Leave
- Family & Medical Leave
- Vision
- Short & Long Term Disability
- Employee Assistance Program and More!

The University of Arkansas recognized the challenge of balancing work with personal life, and we pro actively look for ways to help our employees do well at both aspects of their lives. This includes creating health insurance and retirement plans that work well; offering work-time options where possible; promoting career and personal development; and giving paid leave for holidays, illness, vacations, children's educational activities and military duty, among others.

As we strive to represent the best of public higher education, advance Arkansas and build a better world by providing transformational opportunities and skills, promoting an inclusive and diverse culture, nurturing creativity, and solving problems through research and discovery, the University of Arkansas provides excellent opportunities for professional service and that you can be a part of the worthwhile advancement of the University. We believe in fostering a collaborative and innovative culture among our diverse faculty staff and students that promotes a healthy balance.

To apply for above positions, please visit our website at <https://uasys.wd5.myworkdayjobs.com/UASYS>

For more information, please contact us at **479.575.5351**.

The University of Arkansas is an Equal Opportunity-Affirmative Action Institution.



workatsimmons.com

We're Hiring!



✓ **\$14** /hr
Part-Time Opportunities
 Multiple shifts + Including Saturdays only

✓ **Hiring Bonus**
+\$0.50 /hr
for Night Shift
(all locations)



Build Your Paycheck

- ✓ Vacation Matching
- ✓ Referral Bonuses
- ✓ First 6 Months = Vacation Pay



Simmons Care Clinics

- ✓ High-Quality Healthcare
- ✓ Team Members & Families
- ✓ Free Generic Prescriptions



Education Financial Aid

- ✓ Tuition Reimbursement
- ✓ Leadership Development
- ✓ On-The-Job Training

Prepared Foods

Prepared Foods

Animal Nutrition

Pet Food

*Gentry, AR
 Southwest City, MO
 Van Buren, AR*

Van Buren Cook

*Siloam Springs, AR
 Southwest City, MO*

Siloam Springs, AR

Day & Night Shift

New Shift

Day & Night Shift

Day Shift

- Production
- Maintenance

- Expansion Coming Soon

- Utility Production
- Maintenance
- Operators

- Utility
- Maintenance
- Refrigeration

NWA Hiring Center

2998 Hwy 412 East, Ste 80
 Siloam Springs, AR 72761
(844) 400-9357 Option 3

SWC Hiring Center

10700 S. State Hwy 43
 Southwest City, MO 64863
(417) 762-3271 Option 3

Fort Smith Hiring Center

4900 Rogers Ave., Suite 103 D
 Fort Smith, AR 72903
(479) 262-5390 Option 3

See enhanced safety measures here: simmonsfoods.com/covid19-measures

EEO



Northwest Arkansas Job Fair

March 8, 2022

9:00 AM - 3:30 PM

**Fayetteville Public Library
401 W Mountain Street
Fayetteville, AR 72701**

arjobfair.com

Local Employers | Veteran Friendly | Public Welcome



**WE ARE
HIRING!**

Join Our Team



A CRH COMPANY



STANDARD MATERIALS GROUP
A CRH COMPANY



A CRH COMPANY

CRH is the leading local distributor for products such as rock and asphalt as well as a road construction company. Many of our positions are designed to train you on the job with little to no experience required. APAC, Standard Materials and Arkholo are part of the CRH family.

APAC/SMG - AR Openings for NW AR

Contact: (479) 684-5005 or (479) 263-2177 for details.

Se Habla Español

Potential Sign On Bonus of up to \$1,500!!!!

- Construction
- Aggregates
- Ready Mix Local Drivers (CDL)
- Field
- Office Personnel

**Opportunities Range
from Entry Level
to Experienced
Professionals**

Arkholo Openings for Fort Smith, AR

Contact Marsha Hayes at: (479) 788-6365 for details.

Potential Sign On Bonus of up to \$1,500!!!!

- Asphalt Ground Laborer
- Heavy Equipment Operator
- QC Lab Tech
- 2nd Shift Quarry Workers
- Ready Mixer Drivers

APAC Openings for Muskogee, OK

Contact Marsha Hayes at: (479) 788-6365 for details.

Potential Sign On Bonus of up to \$1,500!!!!

- Asphalt Superintendent
- Class A Heavy Haul Truck Drivers
- Construction Heavy Equipment Operator
- Construction Laborer
- Dirt Crew Foreperson
- Ready Mixers Drivers
- Shop Mechanic

APAC Oklahoma Openings for Tulsa, OK

Contact Lisa Chapman at: (918) 556-2236 for details.

- Asphalt Plant Mechanic
- CDL A Dump Truck Driver
- Construction Laborer
- Construction Heavy Equipment Operator
- Concrete Finisher
- Facilities Maintenance
- Quarry Equipment Operator
- Quarry Maintenance
- Quarry Worker

SMG - Oklahoma Openings for Tulsa, OK

Contact Lisa Chapman at: (918) 556-2236 for details.

- Diesel Mechanic
- Class A Bulker Driver
- Class A Dump Driver
- Plant Operator- Vinita, OK and Claremore, OK
- Ready Mix Drivers

You may apply online for any of the above positions and see more listings at:

<https://www.crhamericas.com>

Competitive Wages, Benefits and Excellent Safety Culture!

APAC Central Inc. is an Affirmative Action and Equal Opportunity Employer



MoistureShield
COMPOSITE DECKING

**NOW
HIRING!**



Join Our Springdale, AR Team!

- **Machine Operators/
Operadores de Maquina**
- **Extrusion Operators/
Operador de Extrusión**
- **Maintenance Techs/
Mecánicos**
- **Quality Techs/Control de
Calidad**
- **General Labor/Producción
General**

We Offer/Ofrecemos:

- **3 1/2 Day Work Week/Semana de 3
dias y medio**
- **Competitive Wages & Benefits/Pago y
Beneficios Competitivos**
- **Bonus Earning Potential/Potencial
de Bonos**
- **Day and Night Openings/Posiciones
de Dia y Noche**
- **Advancement Opportunities/
Oportunidades de Crecimiento**

Apply online/Aplique en línea en:

<https://jobs.crh.com>

Search/ Busque: "MoistureShield"

Apply onsite/Aplique en Persona:

Mon/Lunes – Fri/Viernes: 9 am – 4 pm

**801 N. Jefferson St.
Springdale, AR 72764
479-750-1299**

Equal Opportunity Employer and Drug Free Workplace

MECHANIC NEEDED



Experience in a heavy-duty or transit mechanical shop preferred. ASE certifications preferred. CDL or ability to obtain CDL.

Hourly wage depending on experience.

Excellent Benefits:

Health, Vision, Dental, Paid Vacations, Uniforms provided

457 (b) retirement with employer match

Women & Minorities encouraged to apply



2423 E Robinson, Springdale, AR

Apply online: www.ozark.org

479-361-8741 or email: thill@ozark.org

Pre-employment physical, drug test and background check.

An Equal Employment Opportunity Employer



Drivers Needed

Full and Part-time Routes Available

Excellent Benefits:

Health, Vision, Dental, Paid Holidays, Paid Vacations, Retirement with employer match

Women & Minorities are encouraged to apply

Apply today at: www.ozark.org

For more information call:

479-361-8741 or 479-361-8752

or email: thill@ozark.org

2423 E Robinson

Springdale, AR



Pre-employment physical, drug test and background check.

An Equal Employment Opportunity Employer



HUNTSVILLE, AR

DAY & NIGHT SHIFT PRODUCTION

Pay Rates starting at:
\$15.90 up to \$16.40!
\$1.50 Pay Increase after 90 days!
\$1.00 Shift Premium!

BONUS *RETENTION BONUS EARNING*
POTENTIAL: UP TO \$2000
EOE including Disability/Vets.

Apply Now

careers.butterball.com

Don't have a computer at home?
 Apply onsite using our computers
Mon.- Fri., 9 a.m.-4 p.m.
1294 N. College Street, Huntsville, AR
479-738-2151

**Need individual health insurance?
 Or employer group health insurance?**

I Can Help!



With thousands of plans from nationally recognized companies and personal service, finding the right coverage has never been easier.



Call me at 918-376-0194
 for your **FREE Quote Today!**

HealthMarkets Insurance Agency
 Health | Medicare | Employer Group | Life | Supplemental



Rick Thomas
 Licensed Independent Insurance Agent
918-376-0194



rthomas@healthmarkets.com

Premiums charged by a carrier for a particular insurance product must be consistent, regardless of whether you buy it from HealthMarkets Insurance Agency, from a competing agency or directly from the insurance company. HealthMarkets Insurance Agency, Inc. is licensed as an insurance agency in all 50 states and the District of Columbia. Not all agents are licensed to sell all products. Service and product availability varies by State. HMAIA007244 9/2019







MARTINEZ

SPORTS CARDS

BASKETBALL CARDS
BASEBALL CARDS
FOOTBALL CARDS

www.martinezsportscards.com

ROGERS-LOWELL AREA
CHAMBER OF COMMERCE
1922 - *Centennial* - 2022

Don't miss upcoming networking events from the Rogers-Lowell Area Chamber of Commerce

COFFEE TUESDAY, MARCH 8
at Promenade Commons
750 S. Promenade Blvd. | Rogers

BUSINESS THURSDAY, MARCH 17
at Matrix Racquet Club
1219 Mills Ln. | Lowell

ROGERS-LOWELL AREA CHAMBER OF COMMERCE Centennial program

Visit www.RogersLowell.com for more information

MAY 4th
10:00 a.m. to 3:00 p.m.
FRISCO STATION MALL
100 N. DIXIELAND RD.
IN ROGERS

The Chamber's **Northwest Arkansas Spring Job Fair** is *the largest and longest running Job Fair* in Arkansas and is **FREE** to Job Seekers. This is a great opportunity for businesses to get a jump start on hiring for the summer season as well as full-time employment opportunities. Availability will be on a first-come first-served basis so reserve your booth today to ensure access to many job seekers expected to attend.

JOB-SEEKERS
Bring your resumes to hand out to potential employers

For more information or to register a booth visit www.RogersLowell.com

Northwest Arkansas
NOARK
Human Resources
Association, Inc.

GO BIG OR GO HOME!

MARCH 2022 NOARK MEMBERSHIP MEETING - BUSINESS CREDIT

This interactive session will identify where we stand in our way of connecting and advising as a leader.

Join Us! March 10, 2022
11:30 am - 1 pm
Arkansas Blue Cross Blue Shield Springdale
NWA Corporate Center
5288 W Don Tyson Pkwy | Springdale, AR 72762

Register @ www.noark.org

AR SHRM info@noark.org 479-305-2466
Arkansas SHRM State Council, Inc.

AFFILIATE OF **SHRM**
SOCIETY FOR HUMAN RESOURCE MANAGEMENT
BETTER WORKPLACES BETTER WORLD™

TAHRA
Tulsa Area HUMAN RESOURCES Association

www.tahra.org • admin@tahra.org • 918-344-4622

GET PLUGGED IN!

- Affiliate of the Society for Human Resource Management (SHRM)
- With 500+ members, we are the largest HR chapter in Oklahoma
- Membership benefits include:
 - Monthly program meetings featuring top local and national speakers
 - Learning labs
 - Seminars
 - Networking events
 - And more!

JOIN US @ TAHRA.ORG

AFFILIATE OF **SHRM**
SOCIETY FOR HUMAN RESOURCE MANAGEMENT

Lindsey Management Co., Inc. provides management services to the multifamily apartment properties listed. Thinking about a new career; property management may be a good field to consider.



We are currently hiring assistant managers, leasing consultants & maintenance techs at various properties. These positions are key to the successful management of apartment properties and are positions that can lead to management. Please visit our website. EOE

www.LindseyMgmt.com

Go to Career Opportunities > Apartment Employment > Apply Now. 



ARKANSAS - NORTHWEST ARKANSAS

FAYETTEVILLE

Appleby	479.443.9258
Chestnut II	479.521.6895
The Cliffs I	479.582.2540
The Cliffs II	479.444.0400
Cornerstone I/II	479.443.3507
Crafton Place/Starrfire	479.521.6895
Crossover Terrace	479.443.9744
East Oaks/Oakshire I/II	479.443.7278
Fair Park	479.587.9395
The Greens at Lakeside Village	479.442.7663
Lakeside Village	479.443.9022
The Links at Fayetteville	479.966.4340
The Greens at Fayetteville	479.966.4340
The Fairways at Fayetteville	479.966.4340
Markham Hill	479.443.9333
Paradise View	479.521.8299
The Park I/II	479.443.9804
Shiloh	479.442.4384
Southern View I/II	479.443.6698
Stearns Street/Vantage Center	479.527.9851
Valley Lake	479.444.9744

SPRINGDALE

Bridgestone	479.751.8866
Eastwood	479.927.0676
Johnson Meadows	479.756.1312
The Trails at the Crossings	479.717.6868
The Links at Springdale I/II	479.750.1515
Station	479.756.1312
Sunset I/II/Holcomb	479.750.3030
Walnut Tree	479.751.8866
West End Place/Pleasant Point	479.750.3030

LOWELL

The Links at Lowell	479.770.2100
---------------------------	--------------

ROGERS

Brentwood I/II	479.631.5800
Briarwood	479.631.5800
Doubletree I/II	479.631.5800
Edgewood	479.631.5800
The Fairways at Lost Springs	479.621.0277
The Greens at Lost Springs	479.631.6515
The Greens on Blossom Way	479.631.2024
Lost Springs	479.621.9399
Turtle Creek I/II/Park	479.631.1444

BENTONVILLE

Copperstone I/II	479.271.9300
Delmar	479.273.5283
The Links at Bentonville	479.271.0205
The Links at Rainbow Curve	479.657.6446
The Trails at Bentonville	479.657.6633
Moberly Manor I/II	479.273.2540
Moberly Place	479.273.3533
Walton Crossing	479.268.4237

SILOAM SPRINGS

Spring Valley I/II	479.549.3213
--------------------------	--------------

ARKANSAS—REST OF STATE

BENTON

Dogwood Lakes	501.794.3000
Fountain Lakes	501.778.3134
The Greens at Longhills	501.860.6968

BRYANT

The Fairways at Hurricane Creek	501.847.7747
The Greens at Hurricane Creek	501.847.2586
The Lakes at Hurricane Creek	501.847.6178

CONWAY

Centennial Valley I/II	501.513.2555
The Fairways at Nutters Chapel	501.205.8230
Fox Run	501.327.8739
Germantown	501.329.0767
The Greens at Nutters Chapel	501.450.7056
Lake Pointe	501.336.0900
The Links at Cadron Valley	501.513.0000
Salem Park	501.329.5900
Westlake	501.513.9392

FORT SMITH

The Links at Fort Smith	479.648.8080
Pike Place	479.782.6686

HARRISON

The Links at Harrison	870.365.3620
-----------------------------	--------------

JONESBORO

Gladiola Estates/Gladiola Manor	870.933.8333
The Greens at Jonesboro	870.275.6525
The Links at Jonesboro	870.275.6525
Park Lake	870.933.8333

LITTLE ROCK

The Links at Eagle Hill	501.407.9088
Eagle Hill	501.455.8818
Eagle Nest	501.407.0567
Westwood I/II	501.455.8862

NORTH LITTLE ROCK

The Greens at the Rock	501.753.1200
The Links at the Rock	501.812.5020

MARION

The Fairways at Marion I/II/III	870.739.4949
The Greens at Marion I/II	870.739.6300

PARAGOULD

Silverwood	870.239.3815
------------------	--------------

RUSSELLVILLE

Shadow Lake	479.967.5584
Spring Lake I/II	479.858.7079

SEARCY

Meadow Lake I/II	501.268.3355
------------------------	--------------

SHERWOOD

The Links at Sherwood	501.833.8010
-----------------------------	--------------

TEXARKANA

The Links at Texarkana	870.773.2295
------------------------------	--------------

ALABAMA

TUSCALOOSA

The Greens at Tuscaloosa I/II	205.342.3339
The Links at Tuscaloosa	205.247.9978

AUBURN

The Greens at Auburn	334.821.4061
The Fairways at Auburn I/II	334.209.1850

KANSAS

DERBY

The Greens at Derby I/II	316.788.3060
The Fairways at Derby	316.788.1028
The Links at Kansas	785.841.3868
The Links at Manhattan	785.539.8448

SHAWNEE

The Greens at Shawnee	913.422.8295
-----------------------------	--------------

MISSISSIPPI

OXFORD

The Links at Oxford	662.513.4949
---------------------------	--------------

CANTON

The Greens of Madison County	601.391.3464
The Links of Madison County	601.859.5551
The Trails at Madison County	601.436.4707

STARKVILLE

The Links at Starkville	662.338.1801
-------------------------------	--------------

MISSOURI

JOPLIN

Tanglewood	417.623.3336
------------------	--------------

SPRINGFIELD

The Greens at Springfield	417.833.3261
---------------------------------	--------------

GRANDVIEW

Grand Summit Apartments	816.331.3968
The Fairways at Grand Summit I/II	816.425.4059

COLUMBIA

The Links at Columbia	573.474.4399
-----------------------------	--------------

OKLAHOMA

BIXBY Tulsa suburb

The Links on Memorial I/II	918.369.6055
----------------------------------	--------------

BROKEN ARROW Tulsa suburb

The Greens at Broken Arrow I/II	918.355.0802
The Greens at Broken Arrow III	918.355.0802
The Greens on Aspen	918.872.8899

CLAREMORE

Deer Run	918.343.7326
----------------	--------------

OWASSO

The Greens at Owasso I/II	918.274.4800
The Greens at Owasso III/IV	918.376.4244

STILLWATER

The Links at Stillwater	405.372.9910
The Greens at Stillwater	405.372.9910

OKLAHOMA CITY

The Greens at Lake Overholser	405.494.9888
The Greens at Oklahoma City	405.602.5208
The Links at Oklahoma City	405.936.9211
The Trails at Rockwell	405.604.3583

NORMAN OKC

The Links at Norman	405.321.3430
The Greens at Norman	405.321.3430

EDMOND OKC

The Greens at Coffee Creek	405.216.3642
----------------------------------	--------------

MOORE OKC

The Greens at Moore	405.794.0062
The Fairways at Moore	405.895.6127

YUKON OKC

The Links at Mustang Creek	405.577.5151
The Greens at Mustang Creek	405.577.5151

Join Our TEAM

★ PRODUCTION ★ SHIPPING ★
MAINTENANCE



Join our team



APPLY ONLINE:

www.marshalltown.com

\$18+/hr depending on experience