

# JG JOB GUIDE

 @thejobguide88

 @thejobguide88

 /company/the-job-guide



*Exceptional Quality, Exceeding Expectations*

### **Production Supervisor: Day and Evening Shift**

- Must have previous supervisor experience of 20+ people, bilingual English/Spanish is a plus, experience in food production desired.
- Salary \$60k - \$65k.

### **Production Lead: Evening Shift**

- Lead/Supervisory Experience Required
- Debone Experience Preferred
- \$20/hr - \$25/hr DOE

### **Maintenance Openings:**

- Industrial Maintenance Technicians
  - Welders
  - Certified Electrical Technicians
- Pay rates up to \$35/hr - DOE

### **Southeast Poultry Offers:**

- Relocation Assistance
- Paid Weekly
- Company provided lunches

## Orientations Daily!

# NOW HIRING!

**Sign on Bonus up to \$2000 over first 6 months of employment for newly hired employees!**

## Apply Now!

[southeastpoultry.com](http://southeastpoultry.com)

Or pick up an application at:  
**2200 Town West Dr.  
Rogers, AR 72756**

Se Habla Espanol | EOE

## ISSUE

Volume 34 Issue 10  
May 13 - May 26, 2022

## JOBS

Northwest Arkansas  
SW Missouri • Tulsa OK

# Free



**PRINT**

Distributed in NW Arkansas, SW Missouri and Tulsa Metro area.



**DIGITAL**

Find us at: [thejobguide.com](http://thejobguide.com)



[f @thejobguide](https://www.facebook.com/thejobguide) [in /company/the-job-guide](https://www.linkedin.com/company/the-job-guide)

# Machine Operators Needed in Bentonville, AR

**Full-Time  
1st & 2nd Shift Available**

**1st Shift**  
Mon - Thrus:  
6 am - 4:30 pm  
**2nd Shift**  
Mon - Thrus:  
4:30 pm - 3 am

Starting Pay: \$13/hr

**Position Requirements:**

- Attendance policy is STRICTLY enforced. Good attendance and being on time daily is REQUIRED.
- Must be able to stand, bend and trim for 10 hrs a day.
- Possess basic math skills
- Be able to lift a maximum of 50 lbs
- Be able to follow basic verbal instructions
- Job tasks include parts inspection, trimming parts, counting parts, boxing parts and other duties as supervisor requires.

**BP BENTONVILLE PLASTICS, INC.**  
CUSTOM INJECTION MOLDING SINCE 1985

EOE

**Must Apply in Person:**  
Bentonville Plastics, Inc.  
607 SW A Street | Bentonville, AR 72712

**Contact:**

PO Box 813  
Rogers, AR. 72757  
800-654-9776

**Sales/Questions:**

[sunny@thejobguide.com](mailto:sunny@thejobguide.com)



[thejobguide.com](http://thejobguide.com)

**Sunny Martinez**  
CEO  
Job Guide, LLC



Job Guide, LLC is not responsible for ad contents, products or services offered. Job Guide, LLC reserves the right to reject advertising it deems unsuitable and liability does not exceed the cost of the advertisement placed. Any reproductions of the contents of this publication without the written consent of Job Guide, LLC is strictly prohibited.



[f @thejobguide](https://www.facebook.com/thejobguide) [in /company/the-job-guide](https://www.linkedin.com/company/the-job-guide)



IN HUNTSVILLE, AR

We're

**HIRING**

APPLY NOW

[careers.butterball.com](http://careers.butterball.com)

Don't have a computer at home?

Apply onsite using our computers

Mon.- Fri., 9 a.m.-4 p.m.

1294 N. College Street, Huntsville, AR  
479-738-2151

**DAY &  
NIGHT SHIFT  
PRODUCTION**

*Pay Rates starting at:  
\$15.90 up to \$16.40!*

*\$1.50 Pay Increase  
after 90 days!*

*\$1.00 Shift Premium!*



**RETENTION BONUS  
EARNING POTENTIAL:  
UP TO \$2000**

EOE including Disability/Vets.



Lassonde

LASSONDE PAPPAS  
AND COMPANY, INC.

# NOW HIRING ALL POSITIONS

A world leader in the production of fruit juice and related products, Now Hiring in ALL DEPARTMENTS in our Springdale, AR facility:

## Batching Production | Warehouse

- Starting Pay: \$16.50/hr + Performance increase after 90 days
- 6pm-6am 2-3-2 shift pattern
- Benefits 1st of the month following 30 days of employment
- Vacation and PTO pro-rated for 2022

NOW OFFERING THROUGH 06/30/2022:

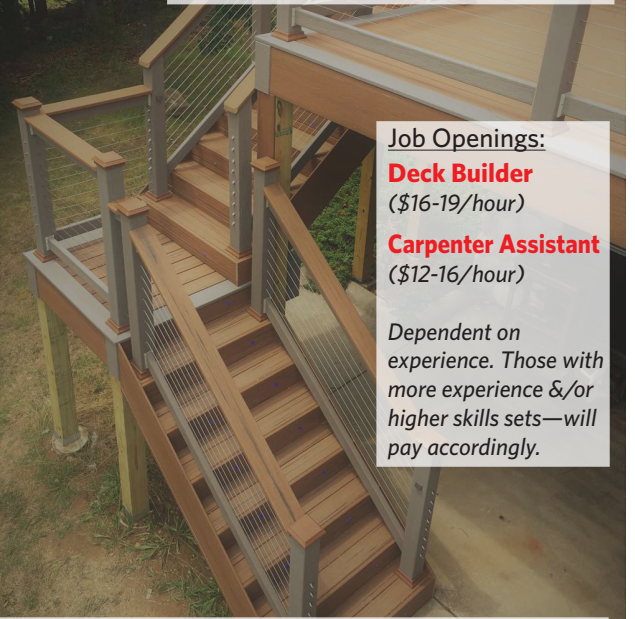
**\$1000 SIGN ON BONUS**

EEO/AAP

<https://lassondepappas.com/careers>



Love working outdoors and creating with your hands? We are expanding the team—come join us in creating fabulous outdoor living spaces for our customers! Looking for team members with deck building experience but this could also be for you if you have basic carpentry skills and seek to develop them.



Job Openings:

**Deck Builder**  
(\$16-19/hour)

**Carpenter Assistant**  
(\$12-16/hour)

*Dependent on experience. Those with more experience &/or higher skills sets—will pay accordingly.*

Apply via email: [ode365@outlook.com](mailto:ode365@outlook.com)

Or on Facebook @oe365



Full-time  
Routes Available

**ORT** OZARK REGIONAL TRANSIT

# Drivers



Part-time  
Routes Available

**Excellent Benefits:**

- Health, Vision, Dental, Paid Holidays, Paid Vacations, Retirement with employer match



*Women & Minorities are encouraged to apply*

For more information call:  
479-361-8741 or 479-361-8752  
Or email: [thill@ozark.org](mailto:thill@ozark.org)

In Person: 2423 E Robinson  
Springdale, AR 72764

**Apply today: [ozark.org](http://ozark.org)**

Pre-employment physical, drug test and background check. | An Equal Employment Opportunity Employer





# HARPS™

HOMETOWN FRESH

Apply online today!  
**HarpsCareers.com**

## Friendly works here.

Join our team and see why we call it our Harps family. If using your personality and customer service skills to solve problems and make people happy sounds good, check us out! We're always looking for awesome people!

## What's in it for you?

- Employee Stock Ownership Plan (ESOP)
- Multiple Growth Opportunities
- Leadership Training & Education
- Flexible Schedules
- 135 Locations in 4 States

## Part Time & Full Time Positions Available

- Stockers • Cashiers • Meat Clerks • Produce Clerks
- Bakers • Cake Decorators • Bakery/Deli Clerks
- Manager Trainee Program

## WE ARE HIRING

Join our team in Bentonville, AR!

Operations and Warehouse  
Positions Available



**Forklift and Machine Operators** starting at **\$15** per hr plus differential pay depending on the shift.

Excellent benefits after 60 days of employment. Medical, Dental, Vision, 401K etc., and 4 day work week in Production.

For full job descriptions and to apply, please visit: [www.outdoorcap.com/careers](http://www.outdoorcap.com/careers) or scan QR code.



Outdoor Cap is an equal opportunity employer.



## NOW HIRING! BUS DRIVERS

Accepting bus drivers applications for  
Part-Time and/or Full-Time Positions for the  
Springdale, AR Public Schools District.

- Teacher Retirement benefits available for full-time employees.
- Other duties may be available with additional pay.
- **Paid Training is available.**
- **Drivers receive a \$20 daily attendance incentive for days driven.**
- Beginning Drivers starting pay \$71.47 per day (w/no exp.)  
**Refer to transportation salary schedule online for complete pay scale.**

Apply in person at: **1612 E. Emma Ave, Springdale, AR 72764**

Or applications are available online:

[apply.sdale.org](http://apply.sdale.org)

**Click the Apply Now tab - Bus Driver Position**

Or call Transportation Dept. for more info @ **479-750-8830**





**Maintenance Tech | 2nd Shift**

**BONUS**

*Weekly bonuses + \$1,200 Sign-On Bonus!*

- Competitive Wages & Weekly Bonus Programs
- Overtime available
- Paid vacation and holidays
- Full Benefit package including medical, dental, vision and 401K

**Apply online:**  
[cargill.com/springdale](http://cargill.com/springdale)

Cargill is an Equal Opportunity Employer, including Disability/Vet. Drug Free Employer

*Join*  
**OUR TEAM**

**WE ARE HIRING**

**APPLY NOW**

**\$1,200 Sign-On Bonus!**  
**Weekly Attendance Bonus!**


*Pay Rates Ranging from:*  
**\$15.10/hr - \$18.25/hr**



- Competitive Wages & Weekly Bonus Programs
- Overtime available
- Paid vacation and holidays
- Full Benefit package including medical, dental, vision and 401K

**Apply online:**  
[www.cargill.com/springdale](http://www.cargill.com/springdale)

Cargill is an Equal Opportunity Employer, including Disability/Vet. Drug Free Employer



**UNIVERSITY OF ARKANSAS**

The University of Arkansas, Fayetteville offers employment opportunities in the fields of:

- Maintenance
- Custodial
- Computer Technical
- Clerical

**Current Opportunities Include:**

- AFS-Athletic Custodial Supervisor
- Administrative Specialist III
- Administrative Support Supervisor
- Business Analyst
- Bus Operator (Current and Anticipated Future Openings)
- Certified Nursing Assistant (Two Open Positions)
- Fiscal Support Supervisor
- Fiscal Support Analyst
- Financial Aid Specialist
- Residence Hall Administrative Specialist (Three Open Positions)
- Service Assistant (Current and Anticipated Future Openings)

The University of Arkansas has an in-house temporary employment staffing service called RazorTemps. Apply to this posting if you are interested in being considered for temporary employment opportunities. These positions vary in length and often provide a 'foot in the door' to permanent employment at the University.

**The University of Arkansas provides one of the most comprehensive and competitive benefit packages in the region.**

- Health Coverage
- Dental Coverage
- Prescription Drug
- Retirement
- Basic Life
- Optional Life
- Tuition Reduction
- Paid Holidays
- Sick Leave
- Vacation Leave
- Catastrophic Leave
- Family & Medical Leave
- Vision
- Short & Long Term Disability
- Employee Assistance Program and More!

The University of Arkansas recognized the challenge of balancing work with personal life, and we pro actively look for ways to help our employees do well at both aspects of their lives. This includes creating health insurance and retirement plans that work well; offering work-time options where possible; promoting career and personal development; and giving paid leave for holidays, illness, vacations, children's educational activities and military duty, among others.

To apply for above positions, please visit our website at <https://uasys.wd5.myworkdayjobs.com/UASYS>

For more information, please contact us at **479.575.5351**.

The University of Arkansas is an Equal Opportunity-Affirmative Action Institution.



[workatsimmons.com](http://workatsimmons.com)

# We're Hiring!



✓ **\$15.50** /hr  
Multiple shifts + Including Saturdays only

✓ **Hiring Bonus**  
**+\$0.50** /hr  
**for Night Shift**  
(all locations)



## Build Your Paycheck

- ✓ Vacation Matching
- ✓ Referral Bonuses
- ✓ First 6 Months = Vacation Pay



## Simmons Care Clinics

- ✓ High-Quality Healthcare
- ✓ Team Members & Families
- ✓ Free Generic Prescriptions



## Education Financial Aid

- ✓ Tuition Reimbursement
- ✓ Leadership Development
- ✓ On-The-Job Training

**Prepared Foods**

**Prepared Foods**

**Animal Nutrition**

**Pet Food**

*Gentry, AR  
Southwest City, MO  
Van Buren, AR*

*Van Buren Cook*

*Siloam Springs, AR  
Southwest City, MO*

*Siloam Springs, AR*

**Day & Night Shift**

**New Shift**

**Day & Night Shift**

**Day Shift**

- Production
- Maintenance

- Expansion Coming Soon

- Utility Production
- Maintenance
- Operators

- Utility
- Maintenance
- Refrigeration

### NWA Hiring Center

2998 Hwy 412 East, Ste 80  
Siloam Springs, AR 72761  
(844) 400-9357 *Option 3*

### SWC Hiring Center

10700 S. State Hwy 43  
Southwest City, MO 64863  
(417) 762-3271 *Option 3*

### Fort Smith Hiring Center

4900 Rogers Ave., Suite 103 D  
Fort Smith, AR 72903  
(479) 262-5390 *Option 3*

See enhanced safety measures here: [simmonsfoods.com/covid19-measures](http://simmonsfoods.com/covid19-measures)

EEO



**MoistureShield**  
COMPOSITE DECKING



**WE ARE  
HIRING**  
JOIN OUR  
TEAM

- Machine Operators/Operadores de Maquina
- Extrusion Operators/Operador de Extrusión
- Maintenance Techs/Mecánicos
- Quality Techs/Control de Calidad
- General Labor/Producción General

**We Offer/Ofrece:**

- 3 1/2 Day Work Week/Semana de 3 dias y medio
- Competitive Wages & Benefits/Pago y Beneficios Competitivos
- Bonus Earning Potential/Potencial de Bonos
- Day and Night Openings/Posiciones de Dia y Noche
- Advancement Opportunities/Oportunidades de Crecimiento

**Apply online/Aplique en línea en:**

**<https://jobs.crh.com>**

Search/ Busque: "MoistureShield"

**Apply onsite/Aplique en Persona:**

**Mon/Lunes – Fri/Viernes: 9 am – 4 pm**

**801 N. Jefferson St.  
Springdale, AR 72764  
479-750-1299**

Equal Opportunity Employer and Drug Free Workplace



**Free Home Care Aide Training Available**

**RNs, LPNs, CNAs &  
Home Care Aides**

**Opportunity for Bonuses!**

- Pay Advances
- Direct Deposit
- Full & Part-Time Assignments
- Uniform Discounts
- Highest Pay in the Area
- Flexible Schedules
- Health Insurance and much more!



Apply online 24/7 at  
**[prnmedstaff.net](http://prnmedstaff.net)**

*Or Apply In Person:*

4400 S. Thompson St., Springdale, AR  
479.756.8701

*Providing opportunities for the Best Employees Since 1990!*



**Circle of Life seeking experienced,  
compassionate candidates to join our TEAM!**

- Admissions RN (PT, Weekend)
- After Hours RN (PT)
- CNA Inpatient (PRN & FT)
- CNA Outpatient (FT)
- Cook, Bentonville (FT)
- LPN Outpatient
- LPN Weekend (PT)
- Major Gift Officer/ Fundraising Officer
- Night Call Nurse (PRN)
- RN Case Manager (FT Outpatient)
- RN Inpatient Manager
- Social Worker (LSW, LMSW, LCSW)



Apply online at: **[nwacircleoflife.org](http://nwacircleoflife.org)**  
Contact Human Resources at: 479-872-3366 or 479-872-3397

**Earlene Howard Hospice Home  
901 Jones Road | Springdale, AR 72762**

**Marie & John Carr Hospice Home  
1201 NE Legacy Parkway | Bentonville, AR 72712**  
Drug Free Workplace Equal Opportunity Employer



*Are you a compassionate person, who loves helping others?*

**We are looking for YOU!**

**Compassionate Caregivers needed to work in the NW AR Region!**

- Flexible Schedules & Locations
- Incentive time off
- Competitive wages
- Caregiver referral bonuses
- 401k/Health/Dental/Vision Insurance
- Unique Assignments
- Specialized training
- Direct Deposit

**\$11 - \$15/hr** *No Experience Required*  
**Depending on assignment** *Paid Training Provided!!*

Retired & newly graduated healthcare professions, RNs, PCAs and CNAs encouraged to apply!

**#BeEssential**



*WALK-IN WEDNESDAY!  
APPLY IN PERSON AND  
INTERVIEW ON THE SPOT!*

**Apply in person:**

**3190 Bella Vista Way | Bella Vista, AR 72714**

Contact TODAY us @ 479-855-6000 for more information

**rah-ar.com**



**Become part of the company that is putting the CARE back into HealthCARE!**

**First Call, your Medical Staffing and Home Care Specialist, has needs for RNs, LPNs, CNAs and CHHAs for both PART-TIME and FULL-TIME assignments**  
**NEW PAY RATES up to:**

- RNs: \$49.00
- LPNs: \$39.00
- CNAs: \$26.00
- CHHAs: \$18.00

Drug testing required. Some restrictions apply.

**Apply online at: [My-FirstCall.com](http://My-FirstCall.com)**

**Come See Us!**

4125 S. Sheridan Rd  
Tulsa, OK 74145  
918.665.1011

7925 N. May Ave  
Oklahoma City, OK 73120  
405.842.7775

3354 S. National Suite D  
Springfield, MO 65807  
417.886.1001



*First Call* knows I work hard.  
*First Call* knows I care.  
*First Call* knows...*I'm Amazing!*



**Do you have a love for helping others.**

**We want to talk with you!**

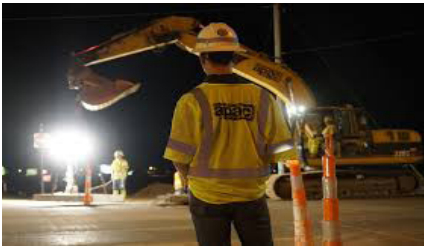
**Become a Personal Care Assistant**  
**40-HOUR SCHEDULES!**

- Earn bonuses
- Have paid holidays
- Work up to 40 hours per week
- Have a flexible part-time work schedule
- Participate in voluntary benefits programs - Including participation in 403(b) retirement plans.
- This is a Safety-Sensitive job for purposes of the AR M.M.A.

**We provide FREE 40-hour Personal Care Training ONLINE! Check our website for more information.**

**Apply on-line: [aanwar.org/Employment](http://aanwar.org/Employment)**

EEO | Employer/AA/M/F/Vet/Disabled  
Employment subject to background check and drug screening.



CRH is the leading local distributor for products such as rock and asphalt as well as a road construction company. Many of our positions are designed to train you on the job with little to no experience required. APAC, Standard Materials and Arkhola are part of the CRH family.



A CRH COMPANY



A CRH COMPANY



STANDARD MATERIALS GROUP  
A CRH COMPANY

**Potential Sign  
On Bonus  
of up to \$1,000!**

## APAC Oklahoma Openings for Tulsa, OK

Contact Lisa Chapman at: (918) 556-2236 for details.

- Asphalt Plant Mechanic  
*(Not Eligible for Sign-On Bonus)*
- CDL A Dump Truck Driver
- Construction Laborer
- Construction Heavy Equipment Operator
- Concrete Finisher
- Facilities Maintenance
- Facilities Maintenance - Tulsa, OK
- Quarry Worker

**Potential Sign  
On Bonus  
of up to \$1,000!**

## SMG - Oklahoma Openings for Tulsa, OK

Contact Lisa Chapman at: (918) 556-2236 for details.

- Class A Dump Driver
- Ready Mix Truck Drivers

**Potential Sign  
On Bonus of up  
to \$1,500!**

## APAC Openings for Muskogee, OK

Contact Marsha Hayes at: (479) 788-6365 for details.

- Asphalt Paving Foreperson
- Class A Heavy Haul Truck Drivers
- Construction Heavy Equipment Operator
- Construction Laborer
- Dirt Crew Foreperson
- Ready Mix Truck Drivers
- Shop Mechanic

**Potential Sign  
On Bonus of up  
to \$1,500!**

## APAC/SMG - AR Openings for NW AR

Contact: (479) 684-5005 or (479) 263-2177 for details.

Se Habla Español

- Aggregates
- Concrete Batch Plant Op
- Concrete Foreman
- Construction
- Estimator
- Field
- Loader Operator
- Mechanic
- Office Personnel
- Quarry Foreperson
- Quarry Worker
- Ready Mix Truck Driver

**Potential Sign  
On Bonus of up  
to \$1,500!**

## Arkhola Openings for Fort Smith, AR

Contact Marsha Hayes at: (479) 788-6365 for details.

- Engineer-In-Training
- Heavy Equipment Operator
- Mining Engineer
- Ready Mix Truck Drivers

You may apply online for any of the above positions and see more listings at:

**<https://www.crhamericas.com>**

**Competitive Wages, Benefits and Excellent Safety Culture!**

APAC Central Inc. is an Affirmative Action and Equal Opportunity Employer



## MECHANIC NEEDED

Experience in a heavy-duty or transit mechanical shop preferred. ASE certifications preferred. CDL or ability to obtain CDL.

Hourly wage depending on experience.

## BUILDING & PROPERTY

## MAINTENANCE NEEDED

Experience with building maintenance and property grounds needs that includes landscaping and trash clean up.

## EXCELLENT BENEFITS

Health, Vision, Dental, Paid Vacations, Uniforms provided 457(b) retirement with employer match

*Women & Minorities encouraged to apply*

2423 E Robinson, Springdale, AR

Apply online: [www.ozark.org](http://www.ozark.org)

479-361-8741 or email: [thill@ozark.org](mailto:thill@ozark.org)

Pre-employment physical, drug test and background check.  
An Equal Employment Opportunity Employer



Southwest Transportation in Siloam Springs, AR is taking applications for:

## Local CDL Drivers

Starting Pay at \$20.75, with up to \$2000 Sign-On Bonus

**Schedule:** Monday-Friday as dispatched, including holidays and weekends.

**Hours:** Averaging at least 40 hours a week

**Position Summary:**

Cobb-Vantress has immediate openings for live haul drivers.

**Minimum Requirements:**

Valid Class A Commercial Driver's License, 1 year verifiable Class A CDL with clean safety record.

[cobb-vantress.com/careers](http://cobb-vantress.com/careers)

Cobb-Vantress is an Equal Opportunity/Affirmative Action Employer. All qualified applicants will be considered without regard to race, national origin, color, religion, age, genetics, sex, sexual orientation, gender identity, disability or veteran status.



# HARPS™

HOMETOWN FRESH

Apply online today!

[HarpsCareers.com](http://HarpsCareers.com)

## Friendly works here.

Join our team and see why we call it our Harps family. If using your personality and customer service skills to solve problems and make people happy sounds good, check us out! We're always looking for awesome people!

## What's in it for you?

Employee Stock Ownership Plan (ESOP)

Multiple Growth Opportunities

Leadership Training & Education

Flexible Schedules

135 Locations in 4 States

## Part Time & Full Time Positions Available

Stockers • Cashiers • Meat Clerks • Produce Clerks  
Bakers • Cake Decorators • Bakery/Deli Clerks  
Manager Trainee Program





ONE FAMILY.  
ONE PURPOSE.

**Bear Hollow Farm**  
**340 Cobb Lane**  
**Pineville, MO 64856**  
**1.800.632.0681**

# A great place to work!

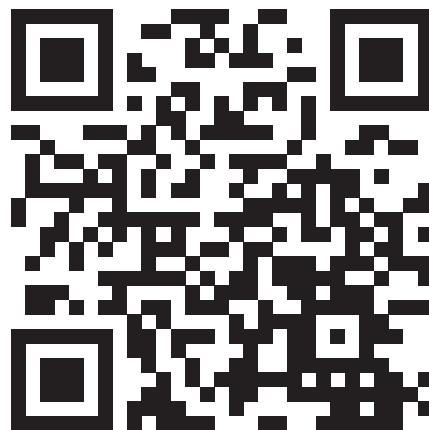
## Artificial Inseminators

Monday, Tuesday, Thursday & Friday from 10:30 am until job is complete.  
Some weekends required.

Starting pay begins at \$16.45/hr + shift incentives  
Pago inicial comienza a \$16.45/hr  
Más incentivos por turno

*Eligible for 9 paid holidays upon hire./Employee Recognition Program/Medical/Dental/Vision/Pharmacy/Life Insurance/Stock/401k Benefits*

*Elegible para 9 días festivos pagados al momento de la contratación. / Programa de reconocimiento de empleados / Médico / Dental / Visión / Farmacia / Seguro de vida / Acciones / Beneficios 401k*



[https://www.cobb-vantress.com/en\\_US/careers/](https://www.cobb-vantress.com/en_US/careers/)

Cobb-Vantress is an Equal Opportunity/Affirmative Action Employer.

All qualified applicants will be considered without regard to race, national origin, color, religion, age, genetics, sex, sexual orientation, gender identity, disability or veteran status.



**PETRA**  
ALLIED HEALTH

Providing quality and affordable education has always been Petra's mission. Our key to keeping our programs affordable is to provide the training needed for certification for an entry level position, but not expanding further than that, which would extend the time and costs needed from the student. Our students really want to get to work in their chosen field, and our programs help them do that. **JOIN US TODAY!**

- **Certified Nursing Assistant**
- **Medical Assistant**
- **Dental Assistant**
- **Limited Licensed Radiologic Technologist**
- **Medical Billing & Coding/Insurance Specialist**
- **Pharmacy Technician**
- **Phlebotomy Technician**
- **Veterinary Assistant**
- **EKG Technician**

Call to learn how PETRA can jump start your career today!

**800-785-9876**

**PetraAlliedHealth.com**  
Licensed by Arkansas Division of Higher Education



Love working outdoors and creating with your hands? We are expanding the team—come join us in creating fabulous outdoor living spaces for our customers! Looking for team members with deck building experience but this could also be for you if you have basic carpentry skills and seek to develop them.

**Job Openings:**  
**Deck Builder**  
 (\$16-19/hour)  
**Carpenter Assistant**  
 (\$12-16/hour)

*Dependent on experience. Those with more experience &/or higher skills sets—will pay accordingly.*

**Apply via email: [ode365@outlook.com](mailto:ode365@outlook.com)**  
**Or on Facebook @oe365**

# NWACC Adult Education

All Services are FREE

Appy online here




NORTHWEST ARKANSAS  
COMMUNITY COLLEGE  
Maximize Potential.  
Exceed Expectations.

Shewmaker Center for Workforce Technologies  
1000 S.E. Eagle Way, Bentonville AR 72712

## What is Your Next Step?

To Connect with Us, email: [askadulthood@nwacc.edu](mailto:askadulthood@nwacc.edu)

NWACC Adult Education provides access to all programs and activities. Must be 18 Years or older to participate. Paid for with funds from the Arkansas Department of Career Education, Adult Education Division.





# Let Us Help You Build Your Brand

## Our Services

### Digital

Web Design / Development  
E-Commerce Development  
Social Media Marketing  
Digital Advertising

### Creative

Creative Collateral  
Package Design  
Digital / Social Content  
Photography

### Branding

Strategy Development  
Logo Design / Identity  
Brand Architecture  
Naming & Taglines

866-641-7692

[martinez-agency.com](http://martinez-agency.com)

[@martinezagency](https://twitter.com/martinezagency)

GET YOU ONE OF THEM FANCY LAWYERS

*the*  
**MOST INTERESTING  
LAWYERS**  
*in Northwest Arkansas*

**MOSTYN  
PRETTYMAN**  
PLLC  
[arklawyers.com](http://arklawyers.com)





**SAVE THE DATE**

Northwest Arkansas  
**NOARK**  
Human Resources  
Association, Inc.

*June 2022 NOARK  
Membership Meeting:*

**Join Us! June 09, 2022**  
11:30 am - 1 pm

Arkansas Blue Cross Blue Shield Springdale - NWA Corporate Center  
5288 W Don Tyson Pkwy | Springdale, AR 72762

**Save the Date! Come Join Us! Register Today!**

**Register @ [www.noark.org](http://www.noark.org)**

**AR SHRM** info@noark.org 479-305-2466  
Arkansas SHRM State Council, Inc.

AFFILIATE OF  
**SHRM**  
BETTER WORKPLACES  
BETTER WORLD™

**100**  
ROGERS-LOWELL AREA  
CHAMBER OF COMMERCE  
1922 - *Centennial* - 2022

Don't miss upcoming networking events  
from the Rogers-Lowell Area Chamber of Commerce

**100?**  
Chamber  
Tutorial

**TUESDAY, MAY 18**  
at the Chamber Office  
317 West Walnut | Rogers

**THURSDAY, MAY 19**  
at Founders Plaza Terrace  
5001 W. Founders Way | Rogers

**Joint BUSINESS**  
After Hours  
with the GREATER BENTONVILLE AREA CHAMBER OF COMMERCE

Visit [www.RogersLowell.com](http://www.RogersLowell.com) for more information

**TAHRA**  
Tulsa Area HUMAN RESOURCES Association

[www.tahra.org](http://www.tahra.org) • [admin@tahra.org](mailto:admin@tahra.org) • 918-344-4622

**GET PLUGGED IN!**

- Affiliate of the Society for Human Resource Management (SHRM)
- With 500+ members, we are the largest HR chapter in Oklahoma
- Membership benefits include:
  - Monthly program meetings featuring top local and national speakers
  - Learning labs
  - Seminars
  - Networking events
  - And more!

**JOIN US @ [TAHRA.ORG](http://TAHRA.ORG)**

AFFILIATE OF  
**SHRM**  
SOCIETY FOR HUMAN  
RESOURCE MANAGEMENT



**M**  
**MARTINEZ**  
SPORTS CARDS



**BASKETBALL CARDS**  
**BASEBALL CARDS**  
**FOOTBALL CARDS**

[www.martinezsportscards.com](http://www.martinezsportscards.com)

Lindsey Management Co., Inc. provides management services to the multifamily apartment properties listed. Thinking about a new career; property management may be a good field to consider.



We are currently hiring assistant managers, leasing consultants & maintenance techs at various properties. These positions are key to the successful management of apartment properties and are positions that can lead to management. Please visit our website. EOE

**www.LindseyMgmt.com**

*Go to Career Opportunities > Apartment Employment > Apply Now.* 



**ARKANSAS - NORTHWEST ARKANSAS**

**FAYETTEVILLE**

Appleby .....	479.443.9258
Chestnut II .....	479.521.6895
The Cliffs I .....	479.582.2540
The Cliffs II .....	479.444.0400
Cornerstone I/II .....	479.443.3507
Crafton Place/Starrfire .....	479.521.6895
Crossover Terrace .....	479.443.9744
East Oaks/Oakshire I/II .....	479.443.7278
Fair Park .....	479.587.9395
The Greens at Lakeside Village .....	479.442.7663
Lakeside Village .....	479.443.9022
The Links at Fayetteville .....	479.966.4340
The Greens at Fayetteville .....	479.966.4340
The Fairways at Fayetteville .....	479.966.4340
Markham Hill .....	479.443.9333
Paradise View .....	479.521.8299
The Park I/II .....	479.443.9804
Shiloh .....	479.442.4384
Southern View I/II .....	479.443.6698
Stearns Street/Vantage Center .....	479.527.9851
Valley Lake .....	479.444.9744

**SPRINGDALE**

Bridgestone .....	479.751.8866
Eastwood .....	479.927.0676
Johnson Meadows .....	479.756.1312
The Trails at the Crossings .....	479.717.6868
The Links at Springdale I/II .....	479.750.1515
Station .....	479.756.1312
Sunset I/II/Holcomb .....	479.750.3030
Walnut Tree .....	479.751.8866
West End Place/Pleasant Point .....	479.750.3030

**LOWELL**

The Links at Lowell .....	479.770.2100
---------------------------	--------------

**ROGERS**

Brentwood I/II .....	479.631.5800
Briarwood .....	479.631.5800
Doubletree I/II .....	479.631.5800
Edgewood .....	479.631.5800
The Fairways at Lost Springs .....	479.621.0277
The Greens at Lost Springs .....	479.631.6515
The Greens on Blossom Way .....	479.631.2024
Lost Springs .....	479.621.9399
Turtle Creek I/II/Park .....	479.631.1444

**BENTONVILLE**

Copperstone I/II .....	479.271.9300
Delmar .....	479.273.5283
The Links at Bentonville .....	479.271.0205
The Links at Rainbow Curve .....	479.657.6446
The Trails at Bentonville .....	479.657.6633
Moberly Manor I/II .....	479.273.2540
Moberly Place .....	479.273.3533
Walton Crossing .....	479.268.4237

**SILOAM SPRINGS**

Spring Valley I/II .....	479.549.3213
--------------------------	--------------

**ARKANSAS—REST OF STATE**

**BENTON**

Dogwood Lakes .....	501.794.3000
Fountain Lakes .....	501.778.3134
The Greens at Longhills .....	501.860.6968

**BRYANT**

The Fairways at Hurricane Creek .....	501.847.7747
The Greens at Hurricane Creek .....	501.847.2586
The Lakes at Hurricane Creek .....	501.847.6178

**CONWAY**

Centennial Valley I/II .....	501.513.2555
The Fairways at Nutters Chapel .....	501.205.8230
Fox Run .....	501.327.8739
Germantown .....	501.329.0767
The Greens at Nutters Chapel .....	501.450.7056
Lake Pointe .....	501.336.0900
The Links at Cadron Valley .....	501.513.0000
Salem Park .....	501.329.5900
Westlake .....	501.513.9392

**FORT SMITH**

The Links at Fort Smith .....	479.648.8080
Pike Place .....	479.782.6686

**HARRISON**

The Links at Harrison .....	870.365.3620
-----------------------------	--------------

**JONESBORO**

Gladiola Estates/Gladiola Manor .....	870.933.8333
The Greens at Jonesboro .....	870.275.6525
The Links at Jonesboro .....	870.275.6525
Park Lake .....	870.933.8333

**LITTLE ROCK**

The Links at Eagle Hill .....	501.407.9088
Eagle Hill .....	501.455.8818
Eagle Nest .....	501.407.0567
Westwood I/II .....	501.455.8862

**NORTH LITTLE ROCK**

The Greens at the Rock .....	501.753.1200
The Links at the Rock .....	501.812.5020

**MARION**

The Fairways at Marion I/II/III .....	870.739.4949
The Greens at Marion I/II .....	870.739.6300

**PARAGOULD**

Silverwood .....	870.239.3815
------------------	--------------

**RUSSELLVILLE**

Shadow Lake .....	479.967.5584
Spring Lake I/II .....	479.858.7079

**SEARCY**

Meadow Lake I/II .....	501.268.3355
------------------------	--------------

**SHERWOOD**

The Links at Sherwood .....	501.833.8010
-----------------------------	--------------

**TEXARKANA**

The Links at Texarkana .....	870.773.2295
------------------------------	--------------

**ALABAMA**

**TUSCALOOSA**

The Greens at Tuscaloosa I/II .....	205.342.3339
The Links at Tuscaloosa .....	205.247.9978

**AUBURN**

The Greens at Auburn .....	334.821.4061
The Fairways at Auburn I/II .....	334.209.1850

**KANSAS**

**DERBY**

The Greens at Derby I/II .....	316.788.3060
The Fairways at Derby .....	316.788.1028
The Links at Kansas .....	785.841.3868
The Links at Manhattan .....	785.539.8448

**SHAWNEE**

The Greens at Shawnee .....	913.422.8295
-----------------------------	--------------

**MISSISSIPPI**

**OXFORD**

The Links at Oxford .....	662.513.4949
---------------------------	--------------

**CANTON**

The Greens of Madison County .....	601.391.3464
The Links of Madison County .....	601.859.5551
The Trails at Madison County .....	601.436.4707

**STARKVILLE**

The Links at Starkville .....	662.338.1801
-------------------------------	--------------

**MISSOURI**

**JOPLIN**

Tanglewood .....	417.623.3336
------------------	--------------

**SPRINGFIELD**

The Greens at Springfield .....	417.833.3261
---------------------------------	--------------

**GRANDVIEW**

Grand Summit Apartments .....	816.331.3968
The Fairways at Grand Summit I/II .....	816.425.4059

**COLUMBIA**

The Links at Columbia .....	573.474.4399
-----------------------------	--------------

**OKLAHOMA**

**BIXBY** Tulsa suburb

The Links on Memorial I/II .....	918.369.6055
----------------------------------	--------------

**BROKEN ARROW** Tulsa suburb

The Greens at Broken Arrow I/II .....	918.355.0802
The Greens at Broken Arrow III .....	918.355.0802
The Greens on Aspen .....	918.872.8899

**CLAREMORE**

Deer Run .....	918.343.7326
----------------	--------------

**OWASSO**

The Greens at Owasso I/II .....	918.274.4800
The Greens at Owasso III/IV .....	918.376.4244

**STILLWATER**

The Links at Stillwater .....	405.372.9910
The Greens at Stillwater .....	405.372.9910

**OKLAHOMA CITY**

The Greens at Lake Overholser .....	405.494.9888
The Greens at Oklahoma City .....	405.602.5208
The Links at Oklahoma City .....	405.936.9211
The Trails at Rockwell .....	405.604.3583

**NORMAN OKC**

The Links at Norman .....	405.321.3430
The Greens at Norman .....	405.321.3430

**EDMOND OKC**

The Greens at Coffee Creek .....	405.216.3642
----------------------------------	--------------

**MOORE OKC**

The Greens at Moore .....	405.794.0062
The Fairways at Moore .....	405.895.6127

**YUKON OKC**

The Links at Mustang Creek .....	405.577.5151
The Greens at Mustang Creek .....	405.577.5151

# SCHAEFFLER



Our bearings make this possible!

## Join Our Joplin, MO Team!

### Machine Operators Starting at \$18.90/hr

- 2nd & 3rd shift premiums
- 10 paid holidays per year
- 401(k) with up to 6% match and immediate vesting
- Most work areas are climate controlled
- Pay increase at 90 days!

**\$1,500.00  
HIRING BONUS**

(hires prior to 7/31/22)

### Three ways to Apply:

- Scanning the **QR code** to apply online:
- Completing an Application available at the guard station located at:  
**3900 S. Range Line Road, Joplin, MO**
- Emailing a request for an application or questions to: **hrjoplin@schaeffler.com**



Schaeffler is an Equal Opportunity Employer/Minorities/Females/Disabled/Veterans