



# JOB GUIDE

@thejobguide88

@thejobguide88

/company/the-job-guide



Exceptional Quality, Exceeding Expectations

Se Habla Espanol  
EOE



# NOW HIRING!

**Orientations Daily!**

# Join our Team!

**Sign on Bonus up to \$2000 over first 6 months of employment for newly hired employees!**

### Production Supervisor: Day and Evening Shift

- Must have previous supervisor experience of 20+ people, bilingual English/Spanish is a plus, experience in food production desired.
- Salary \$60k - \$65k.

### Maintenance Openings:

- Industrial Maintenance Technicians
  - Waste Water Technicians
  - Certified Electrical Technicians
- Pay rates up to \$35/hr - DOE

### Production Lead: Evening Shift

- Lead/Supervisory Experience Required
- Debone Experience Preferred
- \$20/hr - \$25/hr DOE

### Southeast Poultry Offers:

- Relocation Assistance
- Paid Weekly
- Company provided lunches

[southeastpoultry.com](http://southeastpoultry.com)

Or pick up an application at:  
2200 Town West Dr. Rogers, AR 72756

## ISSUE

Volume 34 Issue 12  
June 10 - June 23, 2022

## JOBS

Northwest Arkansas  
SW Missouri • Tulsa OK

# Free



**PRINT**

Distributed in NW Arkansas, SW Missouri and Tulsa Metro area.



**DIGITAL**

Find us at: [thejobguide.com](http://thejobguide.com)



[f @thejobguide](https://www.facebook.com/thejobguide) [in /company/the-job-guide](https://www.linkedin.com/company/the-job-guide)

**Contact:**

PO Box 813 • Rogers, AR. 72757 • 800-654-9776

**Sales/Questions:**

[sunny@thejobguide.com](mailto:sunny@thejobguide.com)

[thejobguide.com](http://thejobguide.com)



**Sunny Martinez**  
CEO  
Job Guide, LLC



Job Guide, LLC is not responsible for ad contents, products or services offered. Job Guide, LLC reserves the right to reject advertising it deems unsuitable and liability does not exceed the cost of the advertisement placed. Any reproductions of the contents of this publication without the written consent of Job Guide, LLC is strictly prohibited.



[f @thejobguide](https://www.facebook.com/thejobguide) [in /company/the-job-guide](https://www.linkedin.com/company/the-job-guide)

WE'RE



*Hiring!*

Lassonde

LASSONDE PAPPAS AND COMPANY, INC.

**NOW OFFERING: \$1000 SIGN ON BONUS THROUGH 06/30/2022!**

**A world leader in the production of fruit juice and related products, NOW HIRING in ALL DEPARTMENTS in our Springdale, AR facility:**

- **Production**
- **Warehouse**
- **Batching**
- **Starting Pay: \$16.50/hr + performance increase after 90 days**
- **6pm-6am 2-3-2 shift pattern**
- **Benefits 1st of the month following 30 days of employment**
- **Vacation and PTO pro-rated for 2022**

**Apply online:**

<https://lassondepappas.com/careers>

EEO/AAP

**WE ARE HIRING**

*Join our team in Bentonville, AR!*



**Operations and Warehouse Positions Available**

**Forklift and Machine Operators** starting at **\$15** per hr plus differential pay depending on the shift.

Excellent benefits after 60 days of employment. Medical, Dental, Vision, 401K etc., and 4 day work week in Production.

For full job descriptions and to apply, please visit: [www.outdoorcap.com/careers](http://www.outdoorcap.com/careers) or scan QR code.

*Outdoor Cap is an equal opportunity employer.*



## MID-SOUTH STEAM BOILER

Start your  career here!

Mid-South Steam Boiler in Van Buren, AR is currently seeking creative problem solvers to assist with boilers, condensate return systems and overall system efficiency.

### Openings include:

#### Boiler Technician Apprentice

- Basic Electrical & Mechanical Background
- Troubleshooting Mechanical and Basic Electrical Systems
- Understand electrical schematics
- Travel Required



#### Experienced Welders

- Stick
- Mig
- Tig
- Pipe
- Structural
- Flux Core

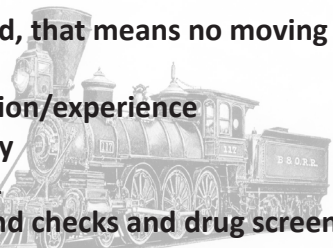


*Must pass welding test.*

**Full Time Positions**  
**Benefits Package Available**

#### Employment Requirements:

- Clean driving record, that means no moving violations, DUI's
- Pay based on position/experience
- Stable Work History
- Must be at least 21
- Criminal background checks and drug screens performed on all potential employees



EOE

#### **Ways to join the Mid-South Steam Boiler Team:**

Apply in Person:

**3805 Pointer Trail East**  
**Van Buren, AR 72956**  
**479-471-1468**

Email resume with references to:  
**[jobs@midsouthboiler.com](mailto:jobs@midsouthboiler.com)**

**[midsouthboiler.com](http://midsouthboiler.com)**



**Now Hiring**

**In Huntsville, AR**

## DAY & NIGHT SHIFT PRODUCTION



Pay Rates starting at:  
\$15.90 up to \$16.40!  
\$1.50 Pay Increase after 90 days!  
\$1.00 Shift Premium!

RETENTION BONUS  
EARNING POTENTIAL:

**UP TO \$2000**

**[careers.butterball.com](http://careers.butterball.com)**

Don't have a computer at home?  
Apply onsite using our computers  
Mon.- Fri., 9 a.m.-4 p.m.

1294 N. College Street, Huntsville, AR  
479-738-2151

EOE including Disability/Vets.



## NOW HIRING! BUS DRIVERS

Accepting bus drivers applications for  
Part-Time and/or Full-Time Positions for the  
Springdale, AR Public Schools District.

- Teacher Retirement benefits available for full-time employees.
- Other duties may be available with additional pay.
- **Paid Training is available.**
- **Drivers receive a \$20 daily attendance incentive for days driven.**
- Beginning Drivers starting pay \$71.47 per day (w/no exp.)  
**Refer to transportation salary schedule online for complete pay scale.**

Apply in person at: **1612 E. Emma Ave, Springdale, AR 72764**  
Or applications are available online:

**[apply.sdale.org](http://apply.sdale.org)**

**Click the Apply Now tab - Bus Driver Position**

Or call Transportation Dept. for more info @ **479-750-8830**



**HARPS**<sup>TM</sup>  
HOMETOWN FRESH

Apply online today!

[HarpsCareers.com](https://www.HarpsCareers.com)

## Friendly works here.

Join our team and see why we call it our Harps family. If using your personality and customer service skills to solve problems and make people happy sounds good, check us out! We're always looking for awesome people!

## What's in it for you?

- Employee Stock Ownership Plan (ESOP)
- Multiple Growth Opportunities
- Leadership Training & Education
- Flexible Schedules
- 135 Locations in 4 States

## Part Time & Full Time Positions Available

- Stockers • Cashiers • Meat Clerks • Produce Clerks
- Bakers • Cake Decorators • Bakery/Deli Clerks
- Manager Trainee Program



**Full-time  
Routes Available**

**ORT** OZARK REGIONAL TRANSIT

**Drivers**



**Part-time  
Routes Available**

**Excellent Benefits:**

- Health, Vision, Dental, Paid Holidays, Paid Vacations, Retirement with employer match



*Women & Minorities are encouraged to apply*

**For more information call:  
479-361-8741 or 479-361-8752  
Or email: [thill@ozark.org](mailto:thill@ozark.org)**

**In Person: 2423 E Robinson  
Springdale, AR 72764**

**Apply today: [ozark.org](https://www.ozark.org)**

Pre-employment physical, drug test and background check. | An Equal Employment Opportunity Employer



**FM**  
**WE ARE HIRING**  
**JOIN OUR TEAM**

**In Rogers, AR**

**Taking applications for:**  
**1st, 2nd & 3rd Shifts**

- **Production**
- **Moldsetters**
- **Maintenance Techs**
- **Project Engineers**

**2 Ways to Apply:**



<https://work4.fmcorp.com>

**Complete Applications in person:**  
**FM Corporation**  
**3535 West Hudson Road**  
**Rogers, AR**  
**Right next to NWACC off I-49 Exit 86**

FM Corporation is an equal opportunity employer.  
All applicants will be considered for employment without attention to race, color, religion, sex, sexual orientation, gender identity, national origin, veteran or disability status.



*Join*  
**OUR TEAM**  
APPLY NOW

WE ARE  
**HIRING**

**\$1,200 Sign-On Bonus!**  
**Weekly Attendance Bonus!**

*Pay Rates Ranging from:*  
**\$15.10/hr - \$18.25/hr**



- Competitive Wages & Weekly Bonus Programs
- Overtime available
- Paid vacation and holidays
- Full Benefit package including medical, dental, vision and 401K

**Apply online:**  
**[www.cargill.com/springdale](http://www.cargill.com/springdale)**

Cargill is an Equal Opportunity Employer, including Disability/Vet. Drug Free Employer



**Maintenance Tech | 2nd Shift**

**BONUS**

**Weekly bonuses + \$1,200 Sign-On Bonus!**

- Competitive Wages & Weekly Bonus Programs
- Overtime available
- Paid vacation and holidays
- Full Benefit package including medical, dental, vision and 401K

**Apply online:**  
**[cargill.com/springdale](http://cargill.com/springdale)**

Cargill is an Equal Opportunity Employer, including Disability/Vet. Drug Free Employer



[workatsimmons.com](http://workatsimmons.com)

# We're Hiring!



✓ **\$15.50** /hr  
Multiple shifts + Including Saturdays only

✓ **Hiring Bonus**  
**+\$0.50** /hr  
**for Night Shift**  
(all locations)



## Build Your Paycheck

- ✓ Vacation Matching
- ✓ Referral Bonuses
- ✓ First 6 Months = Vacation Pay



## Simmons Care Clinics

- ✓ High-Quality Healthcare
- ✓ Team Members & Families
- ✓ Free Generic Prescriptions



## Education Financial Aid

- ✓ Tuition Reimbursement
- ✓ Leadership Development
- ✓ On-The-Job Training

**Prepared Foods**

**Prepared Foods**

**Animal Nutrition**

**Pet Food**

*Gentry, AR*  
*Southwest City, MO*  
*Van Buren, AR*

*Van Buren Cook*

*Siloam Springs, AR*  
*Southwest City, MO*

*Siloam Springs, AR*

**Day & Night Shift**

**New Shift**

**Day & Night Shift**

**Day Shift**

- Production
- Maintenance

- Expansion Coming Soon

- Utility Production
- Maintenance
- Operators

- Utility
- Maintenance
- Refrigeration

### NWA Hiring Center

2998 Hwy 412 East, Ste 80  
Siloam Springs, AR 72761  
**(844) 400-9357 Option 3**

### SWC Hiring Center

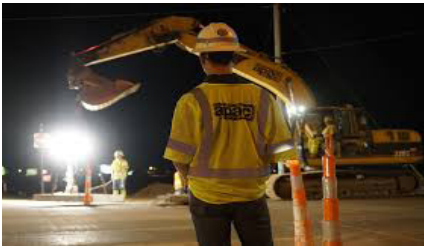
10700 S. State Hwy 43  
Southwest City, MO 64863  
**(417) 762-3271 Option 3**

### Fort Smith Hiring Center

4900 Rogers Ave., Suite 103 D  
Fort Smith, AR 72903  
**(479) 262-5390 Option 3**

See enhanced safety measures here: [simmonsfoods.com/covid19-measures](http://simmonsfoods.com/covid19-measures)

EEO



CRH is the leading local distributor for products such as rock and asphalt as well as a road construction company. Many of our positions are designed to train you on the job with little to no experience required. APAC, Standard Materials and Arkhola are part of the CRH family.



A CRH COMPANY



A CRH COMPANY



STANDARD MATERIALS GROUP  
A CRH COMPANY

**Potential Sign  
On Bonus  
of up to \$1,000!**

## APAC Oklahoma Openings for Tulsa, OK

Contact Lisa Chapman at: (918) 556-2236 for details.

- Asphalt Plant Mechanic  
*(Not Eligible for Sign-On Bonus)*
- CDL A Dump Truck Driver
- Construction Laborer
- Construction Heavy Equipment Operator
- Concrete Finisher
- Facilities Maintenance
- Facilities Maintenance - Tulsa, OK
- Quarry Worker

**Potential Sign  
On Bonus  
of up to \$1,000!**

## SMG - Oklahoma Openings for Tulsa, OK

Contact Lisa Chapman at: (918) 556-2236 for details.

- Class A Dump Driver
- Ready Mix Truck Drivers

**Potential Sign  
On Bonus of up  
to \$1,500!**

## APAC Openings for Muskogee, OK

Contact Marsha Hayes at: (479) 788-6365 for details.

- Asphalt Paving Foreperson
- Class A Heavy Haul Truck Drivers
- Construction Heavy Equipment Operator
- Construction Laborer
- Dirt Crew Foreperson
- Ready Mix Truck Drivers
- Shop Mechanic

**Potential Sign  
On Bonus of up  
to \$1,500!**

## APAC/SMG - AR Openings for NW AR

Contact: (479) 684-5005 or (479) 263-2177 for details.

Se Habla Español

- Aggregates
- Concrete Batch Plant Op
- Concrete Foreman
- Construction
- Estimator
- Field
- Loader Operator
- Mechanic
- Office Personnel
- Quarry Foreperson
- Quarry Worker
- Ready Mix Truck Driver

**Potential Sign  
On Bonus of up  
to \$1,500!**

## Arkhola Openings for Fort Smith, AR

Contact Marsha Hayes at: (479) 788-6365 for details.

- Engineer-In-Training
- Heavy Equipment Operator
- Mining Engineer
- Ready Mix Truck Drivers

You may apply online for any of the above positions and see more listings at:

**<https://www.crhamericas.com>**

**Competitive Wages, Benefits and Excellent Safety Culture!**

APAC Central Inc. is an Affirmative Action and Equal Opportunity Employer



The University of Arkansas, Fayetteville offers employment opportunities in the fields of:  
Maintenance ▪ Custodial ▪ Computer Technical ▪ Clerical

**Current Opportunities Include:**

- Administrative Specialist III
- Bus Operator (Current and Anticipated Future Openings)
- Coordinator for Residence Education
- Fiscal Support Analyst
- Preservation and Binding Supervisor
- Radio Dispatch Operator/Transit
- Service Assistant (Current and Anticipated Future Openings)

The University of Arkansas provides one of the most comprehensive and competitive benefit packages in the region.

- |                     |                      |                 |
|---------------------|----------------------|-----------------|
| • Health Coverage   | • Paid Holidays      | • Short & Long  |
| • Dental Coverage   | • Sick Leave         | Term Disability |
| • Prescription Drug | • Vacation Leave     | • Employee      |
| • Retirement        | • Catastrophic Leave | Assistance      |
| • Basic Life        | • Family & Medical   | Program and     |
| • Optional Life     | Leave                | More!           |
| • Tuition Reduction | • Vision             |                 |



UNIVERSITY OF ARKANSAS

The University of Arkansas has an in-house temporary employment staffing service called RazorTemps. Apply to this posting if you are interested in being considered for temporary employment opportunities. These positions vary in length and often provide a 'foot in the door' to permanent employment at the University.

The University of Arkansas recognized the challenge of balancing work with personal life, and we pro actively look for ways to help our employees do well at both aspects of their lives. This includes creating health insurance and retirement plans that work well; offering work-time options where possible; promoting career and personal development; and giving paid leave for holidays, illness, vacations, children's educational activities and military duty, among others.

As we strive to represent the best of public higher education, advance Arkansas and build a better world by providing transformational opportunities and skills, promoting an inclusive and diverse culture, nurturing creativity, and solving problems through research and discovery, the University of Arkansas provides excellent opportunities for professional service and that you can be a part of the worthwhile advancement of the University. We believe in fostering a collaborative and innovative culture among our diverse faculty staff and students that promotes a healthy balance.

To apply for above positions, please visit our website at:

<https://uasys.wd5.myworkdayjobs.com/UASYS>

For more information, please contact us at 479.575.5351.

The University of Arkansas is an Equal Opportunity-Affirmative Action Institution.



**NOW HIRING!**

**Operators/Assemblers**  
**Operadores / Ensambladores**  
-Up to \$18.29/hour

**Forklift Operators**  
**Operadores de Montacargas**  
-Up to \$18.95/hour

**Maintenance Technicians**  
**Técnicos de Mantenimiento**  
-Up to \$29.79/hour

*Job Fair*

**Onsite Interviews!**

**Friday, July 8, 2022**

**1pm - 5pm**

**1100 W 15th Street  
Fayetteville, AR 72701**

**Get an early start on the application process!**  
**Apply Today!**



**conagrabrands.com**

Conagra Brands is an Affirmative Action and Equal Opportunity Employer.



**K** KEEP  
**E** EDUCATING  
**Y** YOURSELF



Providing quality and affordable education has always been Petra's mission. Our key to keeping our programs affordable is to provide the training needed for certification for an entry level position, but not expanding further than that, which would extend the time and costs needed from the student.

**Our programs include:**

- Certified Nursing Assistant
- Dental Assistant
- EKG Technician
- Limited Licensed Radiologic Technologist
- Medical Assistant
- Medical Billing & Coding/ Insurance Specialist
- Pharmacy Technician
- Phlebotomy Technician
- Veterinary Assistant

Call to learn how PETRA can jump start your career today!

**800-785-9876**

**PetraAlliedHealth.com**

Licensed by Arkansas Division of Higher Education



**Pel-Freeez<sup>®</sup> LLC**

**WEEKEND FARM WORKERS**  
**Gentry, AR**

**Full time or part time position**  
*Must be able to work Saturday and Sunday*  
*Schedule: 7am – 3:30pm*

**Pay rates starting at \$15/hr up to \$18/hr**  
**+ performance increase after 90 days**

- Paid weekly
- Full benefit package available for full-time employees
- 401k
- Paid holidays
- Referral bonuses

**3 WAYS TO APPLY!**

- Apply online: [www.pel-freeez.com/careers](http://www.pel-freeez.com/careers)
- Contact Us: 479-636-4361 Ext. 302
- Apply in person at 205 N Arkansas St, Rogers, AR

Pel-Freeez, LLC is proud to be an Equal Employment Opportunity employer.

# NWACC Adult Education

All Services are FREE

Appy online here



- GED: High School Equivalency
- ELL: English for Language Learners
- Career Education
  - WAGE
- TANF & SNAP E&T Services



**NWACC ADULT EDUCATION**

NORTHWEST ARKANSAS  
 COMMUNITY COLLEGE  
 Maximize Potential.  
 Exceed Expectations.

Shewmaker Center for Workforce Technologies  
 1000 S.E. Eagle Way, Bentonville AR 72712

**What is Your Next Step?**

To Connect with Us, email: [askadulthood@nwacc.edu](mailto:askadulthood@nwacc.edu)

NWACC Adult Education provides access to all programs and activities. Must be 18 Years or older to participate. Paid for with funds from the Arkansas Department of Career Education, Adult Education Division.



**Do you have a love for helping others.**  
**We want to talk with you!**  
**Become a**  
**Personal Care Assistant**

Full and Part-Time Schedules Available!

- Earn bonuses
- Have paid holidays
- Work up to 40 hours per week
- Have a flexible part-time work schedule
- Participate in voluntary benefits programs - Including participation in 403(b) retirement plans.
- This is a Safety-Sensitive job for purposes of the AR M.M.A.

**Have no personal care assistant background. No problem! We can TRAIN you!**

We provide **FREE 40-hour Personal Care Training ONLINE!** Check our website for more information.

Apply on-line: [aanwar.org/Employment](http://aanwar.org/Employment)  
 EEO | Employer/AA/M/F/Vet/Disabled  
 Employment subject to background check and drug screening.



**Caring Super Star**  
 - 2022 -  
 TOP RATED ON CARING.COM  
 Caring.com

**Caregivers Needed**

- Flexible Schedules & Locations
- Incentive time off
- Competitive wages
- Caregiver referral bonuses
- 401k/Health/Dental/Vision Insurance
- Unique Assignments
- Specialized training
- Direct Deposit
- Assignments cover all of NW AR

- **\$11 - \$15/hr**  
**Depending on assignment**
- **No Experience Required**
- **Paid Training Provided!!**

**Right at Home**  
 In Home Care & Assistance

Apply in person :  
 3190 Bella Vista Way  
 Bella Vista, AR 72714

Contact US @ 479-855-6000  
[rah-ar.com](http://rah-ar.com)



**Circle of Life seeking experienced, compassionate candidates to join our TEAM!**

- Admissions RN (PT, Weekend)
- After Hours RN (PT)
- CNA Inpatient (PRN & FT)
- CNA Outpatient (FT)
- LPN Weekend (PT)
- Major Gift Officer/
- Fundraising Officer
- Night Call Nurse (PRN)
- RN Case Manager (FT Outpatient)
- RN Inpatient Manager
- Social Worker (LSW, LMSW, LCSW)

**CIRCLE of LIFE HOSPICE**

Apply online at: [nwacircleoflife.org](http://nwacircleoflife.org)  
 Contact Human Resources at: 479-872-3366 or 479-872-3397

Earlene Howard Hospice Home  
 901 Jones Road | Springdale, AR 72762

Marie & John Carr Hospice Home  
 1201 NE Legacy Parkway | Bentonville, AR 72712  
 Drug Free Workplace Equal Opportunity Employer



**START YOUR CAREER TODAY**

**Free Home Care Aide Training Available!**

**RNs, LPNs, CNAs & Home Care Aides**

**Bonus Opportunities!**

Great Pay and Benefits:

- Full & Part-Time Assignments
- Highest Pay in the area
- Pay Advances
- Direct Deposit
- Uniform Discounts
- Flexible Schedules
- Health Insurance and much more!

Apply online 24/7 at: [prnmedstaff.net](http://prnmedstaff.net)

Or Apply In Person:

**PRN Medical Services**  
 4400 S. Thompson St.  
 Springdale, AR  
 479.756.8701

*Providing opportunities for the Best Employees Since 1990!*

## MID-SOUTH STEAM BOILER

Start your career here!

Mid-South Steam Boiler in Van Buren, AR is currently seeking creative problem solvers to assist with boilers, condensate return systems and overall system efficiency.

### Openings include:

#### Boiler Technician Apprentice

- Basic Electrical & Mechanical Background
- Troubleshooting Mechanical and Basic Electrical Systems
- Understand electrical schematics
- Travel Required



#### Experienced Welders

- Stick
- Mig
- Tig
- Pipe
- Structural
- Flux Core



Must pass welding test.

**Full Time Positions**  
**Benefits Package Available**

#### Employment Requirements:

- Clean driving record, that means no moving violations, DUI's
- Pay based on position/experience
- Stable Work History
- Must be at least 21
- Criminal background checks and drug screens performed on all potential employees

EOE

#### Ways to join the Mid-South Steam Boiler Team:

Apply in Person:

**3805 Pointer Trail East**  
**Van Buren, AR 72956**  
**479-471-1468**

Email resume with references to:

[jobs@midsouthboiler.com](mailto:jobs@midsouthboiler.com)

[midsouthboiler.com](http://midsouthboiler.com)



## MoistureShield

COMPOSITE DECKING



**WE ARE**  
**HIRING**  
**JOIN OUR**  
**TEAM**

- Machine Operators/Operadores de Maquina
- Extrusion Operators/Operador de Extrusión
- Maintenance Techs/Mecánicos
- Quality Techs/Control de Calidad
- General Labor/Producción General

#### We Offer/Ofrecemos:

- 3 1/2 Day Work Week/Semana de 3 dias y medio
- Competitive Wages & Benefits/Pago y Beneficios Competitivos
- Bonus Earning Potential/Potencial de Bonos
- Day and Night Openings/Posiciones de Dia y Noche
- Advancement Opportunities/Oportunidades de Crecimiento

Apply online/Aplique en línea en:

<https://jobs.crh.com>

Search/ Busque: "MoistureShield"

Apply onsite/Aplique en Persona:  
Mon/Lunes – Fri/Viernes: 9 am – 4 pm

**801 N. Jefferson St.**  
**Springdale, AR 72764**  
**479-750-1299**

Equal Opportunity Employer and Drug Free Workplace



**MARTINEZ**  
SPORTS CARDS

2018 PANINI DONRUSS OPTIC  
JAY CUTRANT  
#303 GEM MT 10  
#4259232

2018 PANINI DONRUSS  
BAKER MAYFIELD  
#303 GEM MT 10  
#4259232

2020 TOPPS CHROME  
LUS ROBERT  
#303 GEM MT 10  
#4259232

2020 TOPPS CHROME  
REFRACOR  
#303 GEM MT 10  
#4259232

**BASKETBALL CARDS**  
**BASEBALL CARDS**  
**FOOTBALL CARDS**

[www.martinezsportscards.com](http://www.martinezsportscards.com)



**Lassonde** LASSONDE PAPPAS AND COMPANY, INC.

**NOW HIRING**  
**ALL POSITIONS**

A world leader in the production of fruit juice and related products, Now Hiring in ALL DEPARTMENTS in our Springdale, AR facility:

**Batching**  
**Production | Warehouse**

- Starting Pay: \$16.50/hr + Performance increase after 90 days
- 6pm-6am 2-3-2 shift pattern
- Benefits 1st of the month following 30 days of employment
- Vacation and PTO pro-rated for 2022

**NOW OFFERING THROUGH 06/30/2022:**  
**\$1000 SIGN ON BONUS**

EEO/AAP <https://lassondepappas.com/careers>



**WE'RE HIRING!** Full-time Routes Available

**WE'RE HIRING!** Part-time Routes Available

**Drivers**

**Excellent Benefits:**  
Health, Vision, Dental, Paid Holidays, Paid Vacations, Retirement with employer match

**Women & Minorities are encouraged to apply**

**For more information call:**  
479-361-8741 or 479-361-8752  
Or email: [thill@ozark.org](mailto:thill@ozark.org)

**In Person:** 2423 E Robinson  
Springdale, AR 72764

**Apply today: [ozark.org](http://ozark.org)**



Pre-employment physical, drug test and background check. | An Equal Employment Opportunity Employer



# Let Us Help You Build Your Brand

## Our Services

### Digital

Web Design / Development  
E-Commerce Development  
Social Media Marketing  
Digital Advertising

### Creative

Creative Collateral  
Package Design  
Digital / Social Content  
Photography

### Branding

Strategy Development  
Logo Design / Identity  
Brand Architecture  
Naming & Taglines

866-641-7692

[martinez-agency.com](http://martinez-agency.com)

[@martinezagency](https://twitter.com/martinezagency)

GET YOU ONE OF THEM FANCY LAWYERS



*the*  
**MOST INTERESTING  
LAWYERS**  
*in Northwest Arkansas*

**MOSTYN  
PRETTYMAN**  
PLLC  
[arklawyers.com](http://arklawyers.com)

# JOB FAIR

**Arkansas Division of Services for the Blind Job Fair**



**June 30, 2022  
10 am - 3 pm**



**Embassy Suites Northwest Arkansas Hotel, Spa & Convention Center  
3303 Pinnacle Hills Parkway, Rogers, AR 72758**

ROGERS-LOWELL AREA  
CHAMBER OF COMMERCE  
1922 - *Centennial* - 2022

Don't miss upcoming networking events from the Rogers-Lowell Area Chamber of Commerce

**TUESDAY, JUNE 14**  
at Natural State Pest Control  
223 E. Monroe Ave | Lowell

**THURSDAY, JUNE 16**  
at The CoFounder  
5001 W. Founders Way, Ste. 100 | Rogers

**COFFEE**  
CO-INIEMICTION  
ROGERS-LOWELL AREA Centennial

**BUSINESS**  
After Hours  
ROGERS-LOWELL AREA Centennial

Visit [www.RogersLowell.com](http://www.RogersLowell.com) for more information

Northwest Arkansas  
**NOARK**  
Human Resources Association, Inc.

[info@noark.org](mailto:info@noark.org) | 479-305-2466

Affiliate of the Society of Human Resource Management (SHRM)  
Membership benefits include:  
Monthly program meeting featuring top local and national speakers  
Learning labs  
Seminars  
Networking events  
And More!

**Join us @**  
[www.noark.org](http://www.noark.org)

AFFILIATE OF  
**SHRM**  
SOCIETY FOR HUMAN RESOURCE MANAGEMENT  
BETTER WORKPLACES  
BETTER WORLD™

TAHRA  
Tulsa Area HUMAN RESOURCES Association

[www.tahra.org](http://www.tahra.org) • [admin@tahra.org](mailto:admin@tahra.org) • 918-344-4622

**GET PLUGGED IN!**

- Affiliate of the Society for Human Resource Management (SHRM)
- With 500+ members, we are the largest HR chapter in Oklahoma
- Membership benefits include:
  - Monthly program meetings featuring top local and national speakers
  - Learning labs
  - Seminars
  - Networking events
  - And more!

**JOIN US @ TAHRA.ORG**

AFFILIATE OF  
**SHRM**  
SOCIETY FOR HUMAN RESOURCE MANAGEMENT  
BETTER WORKPLACES  
BETTER WORLD™

Lindsey Management Co., Inc. provides management services to the multifamily apartment properties listed. Thinking about a new career; property management may be a good field to consider.



We are currently hiring assistant managers, leasing consultants & maintenance techs at various properties. These positions are key to the successful management of apartment properties and are positions that can lead to management. Please visit our website. EOE

**www.LindseyMgmt.com**

*Go to Career Opportunities > Apartment Employment > Apply Now.* 



**ARKANSAS - NORTHWEST ARKANSAS**

**FAYETTEVILLE**

Appleby .....	479.443.9258
Chestnut II .....	479.521.6895
The Cliffs I .....	479.582.2540
The Cliffs II .....	479.444.0400
Cornerstone I/II .....	479.443.3507
Crafton Place/Starrfire .....	479.521.6895
Crossover Terrace .....	479.443.9744
East Oaks/Oakshire I/II .....	479.443.7278
Fair Park .....	479.587.9395
The Greens at Lakeside Village .....	479.442.7663
Lakeside Village .....	479.443.9022
The Links at Fayetteville .....	479.966.4340
The Greens at Fayetteville .....	479.966.4340
The Fairways at Fayetteville .....	479.966.4340
Markham Hill .....	479.443.9333
Paradise View .....	479.521.8299
The Park I/II .....	479.443.9804
Shiloh .....	479.442.4384
Southern View I/II .....	479.443.6698
Stearns Street/Vantage Center .....	479.527.9851
Valley Lake .....	479.444.9744

**SPRINGDALE**

Bridgestone .....	479.751.8866
Eastwood .....	479.927.0676
Johnson Meadows .....	479.756.1312
The Trails at the Crossings .....	479.717.6868
The Links at Springdale I/II .....	479.750.1515
Station .....	479.756.1312
Sunset I/II/Holcomb .....	479.750.3030
Walnut Tree .....	479.751.8866
West End Place/Pleasant Point .....	479.750.3030

**LOWELL**

The Links at Lowell .....	479.770.2100
---------------------------	--------------

**ROGERS**

Brentwood I/II .....	479.631.5800
Briarwood .....	479.631.5800
Doubletree I/II .....	479.631.5800
Edgewood .....	479.631.5800
The Fairways at Lost Springs .....	479.621.0277
The Greens at Lost Springs .....	479.631.6515
The Greens on Blossom Way .....	479.631.2024
Lost Springs .....	479.621.9399
Turtle Creek I/II/Park .....	479.631.1444

**BENTONVILLE**

Copperstone I/II .....	479.271.9300
Delmar .....	479.273.5283
The Links at Bentonville .....	479.271.0205
The Links at Rainbow Curve .....	479.657.6446
The Trails at Bentonville .....	479.657.6633
Moberly Manor I/II .....	479.273.2540
Moberly Place .....	479.273.3533
Walton Crossing .....	479.268.4237

**SILOAM SPRINGS**

Spring Valley I/II .....	479.549.3213
--------------------------	--------------

**ARKANSAS—REST OF STATE**

**BENTON**

Dogwood Lakes .....	501.794.3000
Fountain Lakes .....	501.778.3134
The Greens at Longhills .....	501.860.6968

**BRYANT**

The Fairways at Hurricane Creek .....	501.847.7747
The Greens at Hurricane Creek .....	501.847.2586
The Lakes at Hurricane Creek .....	501.847.6178

**CONWAY**

Centennial Valley I/II .....	501.513.2555
The Fairways at Nutters Chapel .....	501.205.8230
Fox Run .....	501.327.8739
Germantown .....	501.329.0767
The Greens at Nutters Chapel .....	501.450.7056
Lake Pointe .....	501.336.0900
The Links at Cadron Valley .....	501.513.0000
Salem Park .....	501.329.5900
Westlake .....	501.513.9392

**FORT SMITH**

The Links at Fort Smith .....	479.648.8080
Pike Place .....	479.782.6686

**HARRISON**

The Links at Harrison .....	870.365.3620
-----------------------------	--------------

**JONESBORO**

Gladiola Estates/Gladiola Manor .....	870.933.8333
The Greens at Jonesboro .....	870.275.6525
The Links at Jonesboro .....	870.275.6525
Park Lake .....	870.933.8333

**LITTLE ROCK**

The Links at Eagle Hill .....	501.407.9088
Eagle Hill .....	501.455.8818
Eagle Nest .....	501.407.0567
Westwood I/II .....	501.455.8862

**NORTH LITTLE ROCK**

The Greens at the Rock .....	501.753.1200
The Links at the Rock .....	501.812.5020

**MARION**

The Fairways at Marion I/II/III .....	870.739.4949
The Greens at Marion I/II .....	870.739.6300

**PARAGOULD**

Silverwood .....	870.239.3815
------------------	--------------

**RUSSELLVILLE**

Shadow Lake .....	479.967.5584
Spring Lake I/II .....	479.858.7079

**SEARCY**

Meadow Lake I/II .....	501.268.3355
------------------------	--------------

**SHERWOOD**

The Links at Sherwood .....	501.833.8010
-----------------------------	--------------

**TEXARKANA**

The Links at Texarkana .....	870.773.2295
------------------------------	--------------

**ALABAMA**

**TUSCALOOSA**

The Greens at Tuscaloosa I/II .....	205.342.3339
The Links at Tuscaloosa .....	205.247.9978

**AUBURN**

The Greens at Auburn .....	334.821.4061
The Fairways at Auburn I/II .....	334.209.1850

**KANSAS**

**DERBY**

The Greens at Derby I/II .....	316.788.3060
The Fairways at Derby .....	316.788.1028
The Links at Kansas .....	785.841.3868
The Links at Manhattan .....	785.539-8448

**SHAWNEE**

The Greens at Shawnee .....	913.422.8295
-----------------------------	--------------

**MISSISSIPPI**

**OXFORD**

The Links at Oxford .....	662.513.4949
---------------------------	--------------

**CANTON**

The Greens of Madison County .....	601.391.3464
The Links of Madison County .....	601.859.5551
The Trails at Madison County .....	601.436.4707

**STARKVILLE**

The Links at Starkville .....	662.338.1801
-------------------------------	--------------

**MISSOURI**

**JOPLIN**

Tanglewood .....	417.623.3336
------------------	--------------

**SPRINGFIELD**

The Greens at Springfield .....	417.833.3261
---------------------------------	--------------

**GRANDVIEW**

Grand Summit Apartments .....	816.331.3968
The Fairways at Grand Summit I/II .....	816.425.4059

**COLUMBIA**

The Links at Columbia .....	573.474.4399
-----------------------------	--------------

**OKLAHOMA**

**BIXBY** Tulsa suburb

The Links on Memorial I/II .....	918.369.6055
----------------------------------	--------------

**BROKEN ARROW** Tulsa suburb

The Greens at Broken Arrow I/II .....	918.355.0802
The Greens at Broken Arrow III .....	918.355.0802
The Greens on Aspen .....	918.872.8899

**CLAREMORE**

Deer Run .....	918.343.7326
----------------	--------------

**OWASSO**

The Greens at Owasso I/II .....	918.274.4800
The Greens at Owasso III/IV .....	918.376.4244

**STILLWATER**

The Links at Stillwater .....	405.372.9910
The Greens at Stillwater .....	405.372.9910

**OKLAHOMA CITY**

The Greens at Lake Overholser .....	405.494.9888
The Greens at Oklahoma City .....	405.602.5208
The Links at Oklahoma City .....	405.936.9211
The Trails at Rockwell .....	405.604.3583

**NORMAN OKC**

The Links at Norman .....	405.321.3430
The Greens at Norman .....	405-321-3430

**EDMOND OKC**

The Greens at Coffee Creek .....	405.216.3642
----------------------------------	--------------

**MOORE OKC**

The Greens at Moore .....	405.794.0062
The Fairways at Moore .....	405.895.6127

**YUKON OKC**

The Links at Mustang Creek .....	405.577.5151
The Greens at Mustang Creek .....	405.577.5151

# SCHAEFFLER



Our bearings make this possible!

## Join Our Joplin, MO Team!

### Machine Operators Starting at \$18.60/hr

- 2nd & 3rd shift premiums
- 10 paid holidays per year
- 401(k) with up to 6% match and immediate vesting
- Most work areas are climate controlled
- Pay increase at 90 days!

**\$1,500.00  
HIRING BONUS**

(hires prior to 7/31/22)

### Three ways to Apply:

- Scanning the **QR code** to apply online:
- Completing an Application available at the guard station located at:  
**3900 S. Range Line Road, Joplin, MO**
- Emailing a request for an application or questions to: **hrjoplin@schaeffler.com**



Schaeffler is an Equal Opportunity Employer/Minorities/Females/Disabled/Veterans