

# JG JOB GUIDE

 @thejobguide88

 @thejobguide88

 /company/the-job-guide

Become part of the company that is putting  
**CARE** back into Health**CARE**!

*First Call*®

Your Staffing Source.

First Call, Your Staffing Source, has needs for **RNs, LPNs, CNAs and CHHAs** for both **PART-TIME** and **FULL-TIME** assignments NOW paying up to:

**RNs \$49.00 • CNAs \$26.00**  
**LPNs \$39.00 • CHHAs \$18.00**

Flexibility • Top Wages • Vacation  
Daily Pay • AFLAC • Weekly Pay • Direct Deposit

First Call requires recent work experience and good references.

*First Call* knows I work hard.

*First Call* knows I care.

*First Call* knows...*I'm Amazing!*

4125 S. Sheridan Rd.  
Tulsa, OK 74145  
918-665-1011

7925 N. May Ave.  
Oklahoma City, OK 73120  
405-842-7775

3354 S. National, Suite D.  
Springfield, MO 65807  
417-886-1001

Apply online at: [www.My-FirstCall.com](http://www.My-FirstCall.com)

Drug testing required. Some restrictions apply.



ISSUE

Volume 34 Issue 13  
June 24 - July 07, 2022

JOBS

Northwest Arkansas  
SW Missouri • Tulsa OK

*Free*



**PRINT**

Distributed in NW Arkansas, SW Missouri and Tulsa Metro area.



**DIGITAL**

Find us at: [thejobguide.com](http://thejobguide.com)



[f @thejobguide](https://www.facebook.com/thejobguide) [in /company/the-job-guide](https://www.linkedin.com/company/the-job-guide)

**Contact:**

PO Box 813  
Rogers, AR. 72757  
800-654-9776

**Sales/Questions:**

[sunny@thejobguide.com](mailto:sunny@thejobguide.com)



[thejobguide.com](http://thejobguide.com)

**Sunny Martinez**  
CEO  
Job Guide, LLC



Job Guide, LLC is not responsible for ad contents, products or services offered. Job Guide, LLC reserves the right to reject advertising it deems unsuitable and liability does not exceed the cost of the advertisement placed. Any reproductions of the contents of this publication without the written consent of Job Guide, LLC is strictly prohibited.



[f @thejobguide](https://www.facebook.com/thejobguide) [in /company/the-job-guide](https://www.linkedin.com/company/the-job-guide)



**Circle of Life seeking experienced, compassionate candidates to join our TEAM!**

- After Hours RN (PT)
- CNA Inpatient (PRN & FT)
- CNA Outpatient (FT)
- Cook (FT) - Bentonville
- LPN Administrative/ Medical Records
- LPN Weekend (PT)
- Night Call Nurse (PRN)
- RN Case Manager (FT Outpatient)
- RN Inpatient Manager
- RN Inpatient - Nights
- Social Worker (LSW, LMSW, LCSW)



Apply online at: [nwacircleoflife.org](http://nwacircleoflife.org)

Contact Human Resources at: 479-872-3366 or 479-872-3397

Earlene Howard Hospice Home  
901 Jones Road | Springdale, AR 72762

Marie & John Carr Hospice Home  
1201 NE Legacy Parkway | Bentonville, AR 72712  
Drug Free Workplace Equal Opportunity Employer



**Do you have a love for helping others.**

**We want to talk with you!**  
Become a

**Personal Care Assistant**

Full and Part-Time Schedules Available!

- Earn bonuses
- Have paid holidays
- Work up to 40 hours per week
- Have a flexible part-time work schedule
- Participate in voluntary benefits programs - Including participation in 403(b) retirement plans.
- This is a Safety-Sensitive job for purposes of the AR M.M.A.



**Have no personal care assistant background. No problem! We can TRAIN you!**

We provide **FREE 40-hour Personal Care Training ONLINE!** Check our website for more information.

Apply on-line: [aanwar.org/Employment](http://aanwar.org/Employment)

EEO | Employer/AA/M/F/Vet/Disabled  
Employment subject to background check and drug screening.



## CAREGIVERS NEEDED

- Flexible Schedules & Locations
- Incentive time off
- Competitive wages
- Caregiver referral bonuses
- 401k/Health/Dental/Vision Insurance
- Unique Assignments
- Specialized training
- Direct Deposit
- Assignments cover all of NW AR
- \$11/hr - \$15/hr Depending on assignment
- No Experience Required
- Paid Traing Provided!!

**Apply in person:**

3190 Bella Vista Way | Bella Vista, AR 72714

Call Us at: 479-855-6000

[rah-ar.com](http://rah-ar.com)

# WAYNE SMITH Trucking

MORRILTON, AR

## OTR and Regional



## SIGN ON BONUS

# \$4,000.00

Must pass DOT, drug test and have at least one year of verifiable driving experience.

- Paid vacation
- Competitive drivers pay
- 401k
- Multiple bonuses
- Medical, vision and dental insurance

Be apart of our growing success story and join the WST team today. *"..take care of your drivers and your customers, and God will take care of everything else."*

*- Wayne Smith, Founder.*

If this sounds like a Great Fit for you,  
Contact Us Today!

## wstrucking.com

For any questions call Mark at  
**501-354-0995 Ext. 128**

Wayne Smith Trucking is a Family Owned and Operated Business.



## WE ARE HIRING NOW

## RNs | LPNs | CNAs Home Care Aides

- **FREE Home Care Aide training available!**
- **Opportunity for BONUSSES!**
- Full & Part-Time Assignments
- Highest Pay in the Area
- Pay Advances
- Direct Deposits
- Uniform Discounts
- Flexible Schedules
- Health Insurance and much more!

Apply in person:

4400 S. Thompson St. | Springdale, AR

479-756-8701

Or apply online 24/7: [prnmedstaff.net](http://prnmedstaff.net)





**PETRA**  
ALLIED HEALTH

**Providing  
Quality  
Allied Health  
Education**

- Certified Nursing Assistant
- Medical Assistant
- Dental Assistant
- Limited Licensed Radiologic Technologist
- Medical Billing & Coding/Insurance Specialist
- Pharmacy Technician
- Phlebotomy Technician
- Veterinary Assistant
- EKG Technician

Call to learn how PETRA can jump start your career today!

**800-785-9876**  
**PetraAlliedHealth.com**

Licensed by Arkansas Division of Higher Education

*Like to problem solve? Like a challenge?  
Like to travel? Looking for a career change?*



**No Experience Required!**  
**Train to become a Boiler Technician Apprentice!**

- *Clean driving record*
- *Must be at least 21*
- *Criminal background checks and drug screens performed on all potential employees*

**Join the Mid-South Steam Boiler TEAM!**

**EOE 4 Different Ways to APPLY:**

Call Human Resources: **479-471-1468**  
Apply in Person:  
**3805 Pointer Trail East | Van Buren, AR 72956**  
Email resume with references to:  
**[jobs@midsouthboiler.com](mailto:jobs@midsouthboiler.com)**  
Apply Online: **[midsouthboiler.com](http://midsouthboiler.com)**

# NWACC Adult Education

All Services are FREE

Appy online here 

- GED: High School Equivalency
- ELL: English for Language Learners
- Career Education
  - WAGE
- TANF & SNAP E&T Services



Shewmaker Center for Workforce Technologies  
1000 S.E. Eagle Way, Bentonville AR 72712

**What is Your Next Step?**

To Connect with Us, email: **[askadulthood@nwacc.edu](mailto:askadulthood@nwacc.edu)**

NWACC Adult Education provides access to all programs and activities. Must be 18 Years or older to participate. Paid for with funds from the Arkansas Department of Career Education, Adult Education Division.



# NOW HIRING

## PAINT & MANUFACTURING TECHNICIAN

Apply at:  
[gamecomposites.com](http://gamecomposites.com)



**HARPS**<sup>TM</sup>  
HOMETOWN FRESH

Apply online today!

[HarpsCareers.com](http://HarpsCareers.com)

### Friendly works here.

Join our team and see why we call it our Harps family. If using your personality and customer service skills to solve problems and make people happy sounds good, check us out! We're always looking for awesome people!

### What's in it for you?

Employee Stock Ownership Plan (ESOP)  
Multiple Growth Opportunities  
Leadership Training & Education  
Flexible Schedules  
135 Locations in 4 States

### Part Time & Full Time Positions Available

Stockers • Cashiers • Meat Clerks • Produce Clerks  
Bakers • Cake Decorators • Bakery/Deli Clerks  
Manager Trainee Program

## Machine Operators Needed in Bentonville, AR

**Full-Time  
1st & 2nd Shift Available**

**1st Shift**  
Mon - Thurs:  
6 am - 4:30 pm  
**2nd Shift**  
Mon - Thurs:  
4:30 pm - 3 am

Starting Pay: \$13/hr

### Position Requirements:

- Attendance policy is STRICTLY enforced. Good attendance and being on time daily is REQUIRED.
- Must be able to stand, bend and trim for 10 hrs a day.
- Possess basic math skills
- Be able to lift a maximum of 50 lbs
- Be able to follow basic verbal instructions
- Job tasks include parts inspection, trimming parts, counting parts, boxing parts and other duties as supervisor requires.



**BENTONVILLE PLASTICS, INC.**  
CUSTOM INJECTION MOLDING SINCE 1985

EOE

**Must Apply in Person:**

Bentonville Plastics, Inc.

607 SW A Street | Bentonville, AR 72712



## Maintenance Tech

### 2nd Shift



- Competitive Wages & Weekly Bonus Programs
- Overtime available
- Paid vacation and holidays
- Full Benefit package including medical, dental, vision and 401K

**Weekly bonuses + \$1,200 Sign-On Bonus!**

**Apply online:**

**cargill.com/springdale**

Cargill is an Equal Opportunity Employer, including Disability/Vet. Drug Free Employer



## NOW HIRING! BUS DRIVERS

Accepting bus drivers applications for  
Part-Time and/or Full-Time Positions for the  
Springdale, AR Public Schools District.

- Teacher Retirement benefits available for full-time employees.
- Other duties may be available with additional pay.
- **Paid Training is available.**
- **Drivers receive a \$20 daily attendance incentive for days driven.**
- Beginning Drivers starting pay \$71.47 per day (w/no exp.)  
**Refer to transportation salary schedule online for complete pay scale.**

Apply in person at: **1612 E. Emma Ave, Springdale, AR 72764**

Or applications are available online:

**apply.sdale.org**

**Click the Apply Now tab - Bus Driver Position**

Or call Transportation Dept. for more info @ **479-750-8830**



**\$1,200 Sign-On Bonus!**  
**Weekly Attendance Bonus!**

**Pay Rates Ranging from:**

**\$15.10/hr - \$18.25/hr**

- Competitive Wages & Weekly Bonus Programs
- Overtime available
- Paid vacation and holidays
- Full Benefit package including medical, dental, vision and 401K

**Apply online:**

**cargill.com/springdale**

Cargill is an Equal Opportunity Employer, including Disability/Vet. Drug Free Employer



**WE ARE HIRING**



WestRock is a leading global packaging company and provider of paper and packaging solutions in global consumer and corrugated markets.

We are currently taking applications for:

## Machine Operators



**Starting Pay: \$17.54**  
**Position Pay: \$18.37 - \$22.45**

Manufacturing experience preferred but not required, High School Diploma or GED required. Must be available to work any shift assigned (3 shift operation). Must be available for daily and/or weekend overtime as required.

## Maintenance Electrical Tech I/II



**Pay Range: \$29.59 - \$34.69**

High School Diploma, GED, further education in Maintenance technology. Testing required to qualify. This is a Multi-Craft position experience required.

*Competitive Benefits including, Medical/Dental/Vision/401K/Employee Stock purchase plan and other offerings.*

For more information and to apply go to:

**westrock.com/careers**

WestRock Company is an Equal Opportunity Employer committed to creating and maintaining a diverse workforce: Minorities/Females/Disabled/Veterans

## WE ARE HIRING

Join our team in Bentonville, AR!



### Operations and Warehouse Positions Available

**Forklift and Machine Operators** starting at **\$15** per hr plus differential pay depending on the shift.

Excellent benefits after 60 days of employment. Medical, Dental, Vision, 401K etc., and 4 day work week in Production.

For full job descriptions and to apply, please visit: [www.outdoorcap.com/careers](http://www.outdoorcap.com/careers) or scan QR code.



*Outdoor Cap is an equal opportunity employer.*



## MID-SOUTH STEAM BOILER



### Boiler Technician Apprentice

- Basic Electrical & Mechanical Background
- Troubleshooting Mechanical and Basic Electrical Systems
- Understand electrical schematics
- Travel Required

#### Employment Requirements:

- Clean driving record
- Pay based on position/experience
- Stable Work History
- Must be at least 21
- Criminal background checks and drug screens performed on all potential employees

#### 4 Ways to JOIN the Mid-South Team:

Call: **479-471-1468**

Apply in Person: **3805 Pointer Trail East | Van Buren, AR 72956**

Email resume with references to: [jobs@midsouthboiler.com](mailto:jobs@midsouthboiler.com)

Apply Online: **midsouthboiler.com**





**MARTINEZ**  
SPORTS CARDS

2018 PANINI DONRUSS  
SAKES MAYFIELD GEM MT 10  
54258007

2018 PANINI DONRUSS OPTIC  
EVANS DUNBAR GEM MT 10  
54258022

2020 TOPPS CHROME  
LUSI ROBERT REFRACTION GEM MT 10  
54258904

**BASKETBALL CARDS  
BASEBALL CARDS  
FOOTBALL CARDS**

[www.martinezsportscards.com](http://www.martinezsportscards.com)

*We're Hiring!!!!*

**Day & Night Shift  
Production Positions**

**BUTTERBALL®**

**Pay Rates starting at: \$15.90 up to \$16.40!**  
**\$1.50 Pay Increase after 90 days!**  
**\$1.00 Shift Premium!**

**\$\$ BONUS PROGRAMS \$\$**  
**RETENTION BONUS EARNING POTENTIAL: UP TO \$2000**

 **Roundtrip Transportation from  
Springdale, AR to Butterball!  
Offered 3 Times a Day!!**

**Apply online TODAY at:  
[careers.butterball.com](http://careers.butterball.com)**

Don't have a computer at home? Apply onsite using our computers  
 Mon. - Fri., 9 a.m. - 4 p.m.  
 Butterball, LLC | 1294 N. College Street, Huntsville, AR | 479-738-2151  
 EOE including Disability/Vets.

**WE'RE HIRING!**

**Full-time  
Routes Available**

**ORT** OZARK REGIONAL TRANSIT

**Drivers**

**Part-time  
Routes Available**

**Excellent Benefits:**  
 Health, Vision,  
 Dental, Paid  
 Holidays, Paid  
 Vacations,  
 Retirement with  
 employer match

**Women &  
Minorities are  
encouraged to  
apply**

**For more information call:  
479-361-8741 or 479-361-8752  
Or email: [thill@ozark.org](mailto:thill@ozark.org)**

**In Person: 2423 E Robinson  
Springdale, AR 72764**

**Apply today: [ozark.org](http://ozark.org)**



Pre-employment physical, drug test and background check. | An Equal Employment Opportunity Employer



The University of Arkansas,  
Fayetteville offers  
employment opportunities in  
the fields of:  
Maintenance ■ Custodial ■  
Computer Technical ■ Clerical

**Current Opportunities Include:**

- Administrative Specialist I
- Administrative Specialist III
- AFS – Athletic Custodial Supervisor
- Athletic Facility Supervisor – Sports Turf
- Bus Operator (Current and Anticipated Future Openings)
- Certified Nursing Assistant (C.N.A.) or Medical Assistant (M.A.) (Two Open Positions)
- Fiscal Support Specialist
- Fixed Asset Specialist
- GSIE Student Applications Specialist
- Human Resources Specialist
- Payroll Services Coordinator
- Research Accountant
- Research Project Analyst
- Service Assistant (Current and Anticipated Future Openings)
- Special Events/Tool Crib Supervisor
- Special Projects Coordinator

The University of Arkansas provides one of the most comprehensive and competitive benefit packages in the region.

- |                     |                          |   |
|---------------------|--------------------------|---|
| • Health Coverage   | • Paid Holidays          | • Vision                                |
| • Dental Coverage   | • Sick Leave             | • Short & Long Term Disability          |
| • Prescription Drug | • Vacation Leave         | • Employee Assistance Program and More! |
| • Retirement        | • Catastrophic Leave     |   |
| • Basic Life        | • Family & Medical Leave |   |
| • Optional Life     |                          |   |
| • Tuition Reduction |                          |   |



UNIVERSITY OF  
ARKANSAS

The University of Arkansas has an in-house temporary employment staffing service called RazorTemps. Apply to this posting if you are interested in being considered for temporary employment opportunities. These positions vary in length and often provide a 'foot in the door' to permanent employment at the University.

The University of Arkansas recognized the challenge of balancing work with personal life, and we pro actively look for ways to help our employees do well at both aspects of their lives. This includes creating health insurance and retirement plans that work well; offering work-time options where possible; promoting career and personal development; and giving paid leave for holidays, illness, vacations, children's educational activities and military duty, among others.

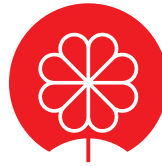
As we strive to represent the best of public higher education, advance Arkansas and build a better world by providing transformational opportunities and skills, promoting an inclusive and diverse culture, nurturing creativity, and solving problems through research and discovery, the University of Arkansas provides excellent opportunities for professional service and that you can be a part of the worthwhile advancement of the University. We believe in fostering a collaborative and innovative culture among our diverse faculty staff and students that promotes a healthy balance.

To apply for above positions, please visit our website at:

<https://uasys.wd5.myworkdayjobs.com/UASYS>

For more information, please contact us at 479.575.5351.

The University of Arkansas is an Equal Opportunity-Affirmative Action Institution.



Lassonde

LASSONDE PAPPAS  
AND COMPANY, INC.

A world leader in the production of fruit juice and related products, NOW HIRING for our *Springdale, AR facility:*

**JUICE BLENDER**

- Starting Pay: \$20/hr + Performance increase after 90 days
- 6pm-6am 2-3-2 shift pattern
- Benefits 1st of the month following 30 days of employment
- Vacation and PTO pro-rated for 2022

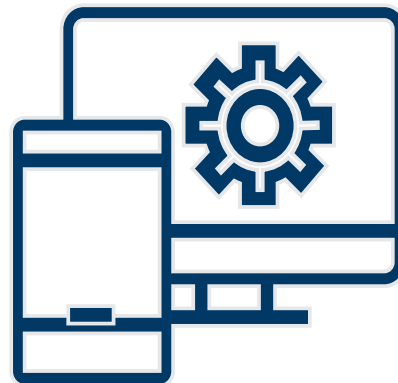


<https://lassondepappas.com/careers>



MARTINEZ AGENCY

**WE BUILD WEBSITES...**



[martinez-agency.com](http://martinez-agency.com)  
866-641-7692

# WAYNE SMITH

## Trucking

MORRILTON, AR

### OTR and Regional



### SIGN ON BONUS \$4,000.00

Must pass DOT, drug test and have at least one year of verifiable driving experience.

- Paid vacation
- Competitive drivers pay
- 401k
- Multiple bonuses
- Medical, vision and dental insurance

Be apart of our growing success story and join the WST team today. *"..take care of your drivers and your customers, and God will take care of everything else."*

*- Wayne Smith, Founder.*

If this sounds like a Great Fit for you,  
Contact Us Today!

## wstrucking.com

For any questions call Mark at  
**501-354-0995 Ext. 128**

Wayne Smith Trucking is a Family Owned and Operated Business.



## MoistureShield

COMPOSITE DECKING



### Join Our Springdale, AR Team!

- Machine Operators/Operadores de Maquina
- Extrusion Operators/Operador de Extrusión
- Maintenance Techs/Mecánicos
- Quality Techs/Control de Calidad
- General Labor/Producción General

### We Offer/Ofrecemos:

- 3 1/2 Day Work Week/Semana de 3 dias y medio
- Competitive Wages & Benefits/Pago y Beneficios Competitivos
- Bonus Earning Potential/Potencial de Bonos
- Day and Night Openings/Posiciones de Dia y Noche
- Advancement Opportunities/Oportunidades de Crecimiento

### Apply online/Aplique en línea en:

## <https://jobs.crh.com>

Search/ Busque: "MoistureShield"

### Apply onsite/Aplique en Persona: Mon/Lunes – Fri/Viernes: 9 am – 4 pm

801 N. Jefferson St.  
Springdale, AR 72764  
479-750-1299

Equal Opportunity Employer and Drug Free Workplace





[workatsimmons.com](http://workatsimmons.com)

# We're Hiring!



✓ **\$15.50** /hr  
Multiple shifts + Including Saturdays only

✓ **Hiring Bonus**  
**+\$0.50** /hr  
for Night Shift  
*(all locations)*



## Build Your Paycheck

- ✓ Vacation Matching
- ✓ Referral Bonuses
- ✓ First 6 Months = Vacation Pay



## Simmons Care Clinics

- ✓ High-Quality Healthcare
- ✓ Team Members & Families
- ✓ Free Generic Prescriptions



## Education Financial Aid

- ✓ Tuition Reimbursement
- ✓ Leadership Development
- ✓ On-The-Job Training

**Prepared Foods**

**Prepared Foods**

**Animal Nutrition**

**Pet Food**

*Gentry, AR  
Southwest City, MO  
Van Buren, AR*

*Van Buren Cook*

*Siloam Springs, AR  
Southwest City, MO*

*Siloam Springs, AR*

**Day & Night Shift**

**New Shift**

**Day & Night Shift**

**Day Shift**

- Production
- Maintenance

- Expansion Coming Soon

- Utility Production
- Maintenance
- Operators

- Utility
- Maintenance
- Refrigeration

### NWA Hiring Center

2998 Hwy 412 East, Ste 80  
Siloam Springs, AR 72761  
**(844) 400-9357 Option 3**

### SWC Hiring Center

10700 S. State Hwy 43  
Southwest City, MO 64863  
**(417) 762-3271 Option 3**

### Fort Smith Hiring Center

4900 Rogers Ave., Suite 103 D  
Fort Smith, AR 72903  
**(479) 262-5390 Option 3**

See enhanced safety measures here: [simmonsfoods.com/covid19-measures](http://simmonsfoods.com/covid19-measures)

EEO

# SCHAEFFLER



Our bearings make this possible!

## Join Our Joplin, MO Team!

### Machine Operators Starting at \$18.60/hr

- 2nd & 3rd shift premiums
- 10 paid holidays per year
- 401(k) with up to 6% match and immediate vesting
- Most work areas are climate controlled
- Pay increase at 90 days!

**\$1,500.00  
HIRING BONUS**

(hires prior to 7/31/22)

### Three ways to Apply:

- Scanning the **QR code** to apply online:
- Completing an Application available at the guard station located at:  
**3900 S. Range Line Road, Joplin, MO**
- Emailing a request for an application or questions to: **hrjoplin@schaeffler.com**



Schaeffler is an Equal Opportunity Employer/Minorities/Females/Disabled/Veterans



A CRH COMPANY



STANDARD MATERIALS GROUP  
A CRH COMPANY



A CRH COMPANY

CRH is the leading local distributor for products such as rock and asphalt as well as a road construction company. Many of our positions are designed to train you on the job with little to no experience required.  
APAC, Standard Materials and Arkhola are part of the CRH family.

### Arkhola Openings for Fort Smith, AR

Contact Marsha Hayes at: (479) 788-6365 for details.

**Potential Sign On Bonus of up to \$1,500!**

- Engineer-In-Training
- Heavy Equipment Operator
- Mining Engineer
- Ready Mix Truck Drivers

### APAC/SMG - AR Openings for NW AR

Contact: (479) 684-5005 or (479) 263-2177 for details.

Se Habla Español

**Potential Sign On Bonus of up to \$1,500!**

- Aggregates
- Concrete Batch Plant Op
- Concrete Foreman
- Construction
- Estimator
- Field
- Loader Operator
- Mechanic
- Office Personnel
- Quarry Foreperson
- Quarry Worker
- Ready Mix Truck Driver

### APAC Openings for Muskogee, OK

Contact Marsha Hayes at: (479) 788-6365 for details.

**Potential Sign On Bonus of up to \$1,500!**

- Asphalt Paving Foreperson
- Class A Heavy Haul Truck Drivers
- Construction Heavy Equipment Operator
- Construction Laborer
- Dirt Crew Foreperson
- Ready Mix Truck Drivers
- Shop Mechanic

### SMG - Oklahoma Openings for Tulsa, OK

Contact Lisa Chapman at: (918) 556-2236 for details.

**Potential Sign On Bonus of up to \$1,000!**

- Class A Dump Driver
- Ready Mix Truck Drivers

### APAC Oklahoma Openings for Tulsa, OK

Contact Lisa Chapman at: (918) 556-2236 for details.

**Potential Sign On Bonus of up to \$1,000!**

- Asphalt Plant Mechanic  
*(Not Eligible for Sign-On Bonus)*
- CDL A Dump Truck Driver
- Construction Laborer
- Construction Heavy Equipment Operator
- Concrete Finisher
- Facilities Maintenance
- Facilities Maintenance - Tulsa, OK
- Quarry Worker

You may apply online for any of the above positions and see more listings at:

**<https://www.crhamericas.com>**

**Competitive Wages, Benefits and Excellent Safety Culture!**

APAC Central Inc. is an Affirmative Action and Equal Opportunity Employer





**SAVE THE DATE**

Northwest Arkansas  
**NOARK**  
Human Resources Association, Inc.

*July 2022 NOARK Membership Meeting:*

**Join Us! July 14, 2022**  
11:30 am - 1 pm

Arkansas Blue Cross Blue Shield Springdale - NWA Corporate Center  
5288 W Don Tyson Pkwy | Springdale, AR 72762

**Save the Date! Come Join Us! Register Today!**

**Register @ [www.noark.org](http://www.noark.org)**

**AR SHRM** info@noark.org 479-305-2466

AFFILIATE OF **SHRM**  
BETTER WORKPLACES  
BETTER WORLD™



**JOB FAIR**

**Arkansas Division of Services for the Blind Job Fair**

**June 30, 2022**  
**10 am - 3 pm**




Embassy Suites Northwest Arkansas Hotel, Spa & Convention Center  
3303 Pinnacle Hills Parkway, Rogers, AR 72758

**TAHRA**  
Tulsa Area HUMAN RESOURCES Association

www.tahra.org • admin@tahra.org • 918-344-4622

**GET PLUGGED IN!**

- Affiliate of the Society for Human Resource Management (SHRM)
- With 500+ members, we are the largest HR chapter in Oklahoma
- Membership benefits include:
  - Monthly program meetings featuring top local and national speakers
  - Learning labs
  - Seminars
  - Networking events
  - And more!

**JOIN US @ [TAHRA.ORG](http://TAHRA.ORG)**

AFFILIATE OF **SHRM**  
SOCIETY FOR HUMAN RESOURCE MANAGEMENT



**100**  
ROGERS-LOWELL AREA  
CHAMBER OF COMMERCE  
1922 - *Centennial* - 2022

Don't miss upcoming networking events from the Rogers-Lowell Area Chamber of Commerce

**100 COFFEE CONNECTION** TUESDAY, JULY 12  
at Frisco Station Mall  
100 N. Dixieland Road | Rogers

**THURSDAY, JULY 21**  
at Best Title LLC  
3201 S. Market St. | Rogers

**100 BUSINESS After Hours**

Visit [www.RogersLowell.com](http://www.RogersLowell.com) for more information

Lindsey Management Co., Inc. provides management services to the multifamily apartment properties listed. Thinking about a new career; property management may be a good field to consider.



We are currently hiring assistant managers, leasing consultants & maintenance techs at various properties. These positions are key to the successful management of apartment properties and are positions that can lead to management. Please visit our website. EOE

**www.LindseyMgmt.com**

*Go to Career Opportunities > Apartment Employment > Apply Now.* 



**ARKANSAS - NORTHWEST ARKANSAS**

**FAYETTEVILLE**

Appleby .....	479.443.9258
Chestnut II .....	479.521.6895
The Cliffs I .....	479.582.2540
The Cliffs II .....	479.444.0400
Cornerstone I/II .....	479.443.3507
Crafton Place/Starrfire .....	479.521.6895
Crossover Terrace .....	479.443.9744
East Oaks/Oakshire I/II .....	479.443.7278
Fair Park .....	479.587.9395
The Greens at Lakeside Village .....	479.442.7663
Lakeside Village .....	479.443.9022
The Links at Fayetteville .....	479.966.4340
The Greens at Fayetteville .....	479.966.4340
The Fairways at Fayetteville .....	479.966.4340
Markham Hill .....	479.443.9333
Paradise View .....	479.521.8299
The Park I/II .....	479.443.9804
Shiloh .....	479.442.4384
Southern View I/II .....	479.443.6698
Stearns Street/Vantage Center .....	479.527.9851
Valley Lake .....	479.444.9744

**SPRINGDALE**

Bridgestone .....	479.751.8866
Eastwood .....	479.927.0676
Johnson Meadows .....	479.756.1312
The Trails at the Crossings .....	479.717.6868
The Links at Springdale I/II .....	479.750.1515
Station .....	479.756.1312
Sunset I/II/Holcomb .....	479.750.3030
Walnut Tree .....	479.751.8866
West End Place/Pleasant Point .....	479.750.3030

**LOWELL**

The Links at Lowell .....	479.770.2100
---------------------------	--------------

**ROGERS**

Brentwood I/II .....	479.631.5800
Briarwood .....	479.631.5800
Doubletree I/II .....	479.631.5800
Edgewood .....	479.631.5800
The Fairways at Lost Springs .....	479.621.0277
The Greens at Lost Springs .....	479.631.6515
The Greens on Blossom Way .....	479.631.2024
Lost Springs .....	479.621.9399
Turtle Creek I/II/Park .....	479.631.1444

**BENTONVILLE**

Copperstone I/II .....	479.271.9300
Delmar .....	479.273.5283
The Links at Bentonville .....	479.271.0205
The Links at Rainbow Curve .....	479.657.6446
The Trails at Bentonville .....	479.657.6633
Moberly Manor I/II .....	479.273.2540
Moberly Place .....	479.273.3533
Walton Crossing .....	479.268.4237

**SILOAM SPRINGS**

Spring Valley I/II .....	479.549.3213
--------------------------	--------------

**ARKANSAS—REST OF STATE**

**BENTON**

Dogwood Lakes .....	501.794.3000
Fountain Lakes .....	501.778.3134
The Greens at Longhills .....	501.860.6968

**BRYANT**

The Fairways at Hurricane Creek .....	501.847.7747
The Greens at Hurricane Creek .....	501.847.2586
The Lakes at Hurricane Creek .....	501.847.6178

**CONWAY**

Centennial Valley I/II .....	501.513.2555
The Fairways at Nutters Chapel .....	501.205.8230
Fox Run .....	501.327.8739
Germantown .....	501.329.0767
The Greens at Nutters Chapel .....	501.450.7056
Lake Pointe .....	501.336.0900
The Links at Cadron Valley .....	501.513.0000
Salem Park .....	501.329.5900
Westlake .....	501.513.9392

**FORT SMITH**

The Links at Fort Smith .....	479.648.8080
Pike Place .....	479.782.6686

**HARRISON**

The Links at Harrison .....	870.365.3620
-----------------------------	--------------

**JONESBORO**

Gladiola Estates/Gladiola Manor .....	870.933.8333
The Greens at Jonesboro .....	870.275.6525
The Links at Jonesboro .....	870.275.6525
Park Lake .....	870.933.8333

**LITTLE ROCK**

The Links at Eagle Hill .....	501.407.9088
Eagle Hill .....	501.455.8818
Eagle Nest .....	501.407.0567
Westwood I/II .....	501.455.8862

**NORTH LITTLE ROCK**

The Greens at the Rock .....	501.753.1200
The Links at the Rock .....	501.812.5020

**MARION**

The Fairways at Marion I/II/III .....	870.739.4949
The Greens at Marion I/II .....	870.739.6300

**PARAGOULD**

Silverwood .....	870.239.3815
------------------	--------------

**RUSSELLVILLE**

Shadow Lake .....	479.967.5584
Spring Lake I/II .....	479.858.7079

**SEARCY**

Meadow Lake I/II .....	501.268.3355
------------------------	--------------

**SHERWOOD**

The Links at Sherwood .....	501.833.8010
-----------------------------	--------------

**TEXARKANA**

The Links at Texarkana .....	870.773.2295
------------------------------	--------------

**ALABAMA**

**TUSCALOOSA**

The Greens at Tuscaloosa I/II .....	205.342.3339
The Links at Tuscaloosa .....	205.247.9978

**AUBURN**

The Greens at Auburn .....	334.821.4061
The Fairways at Auburn I/II .....	334.209.1850

**KANSAS**

**DERBY**

The Greens at Derby I/II .....	316.788.3060
The Fairways at Derby .....	316.788.1028
The Links at Kansas .....	785.841.3868
The Links at Manhattan .....	785.539.8448

**SHAWNEE**

The Greens at Shawnee .....	913.422.8295
-----------------------------	--------------

**MISSISSIPPI**

**OXFORD**

The Links at Oxford .....	662.513.4949
---------------------------	--------------

**CANTON**

The Greens of Madison County .....	601.391.3464
The Links of Madison County .....	601.859.5551
The Trails at Madison County .....	601.436.4707

**STARKVILLE**

The Links at Starkville .....	662.338.1801
-------------------------------	--------------

**MISSOURI**

**JOPLIN**

Tanglewood .....	417.623.3336
------------------	--------------

**SPRINGFIELD**

The Greens at Springfield .....	417.833.3261
---------------------------------	--------------

**GRANDVIEW**

Grand Summit Apartments .....	816.331.3968
The Fairways at Grand Summit I/II .....	816.425.4059

**COLUMBIA**

The Links at Columbia .....	573.474.4399
-----------------------------	--------------

**OKLAHOMA**

**BIXBY** Tulsa suburb

The Links on Memorial I/II .....	918.369.6055
----------------------------------	--------------

**BROKEN ARROW** Tulsa suburb

The Greens at Broken Arrow I/II .....	918.355.0802
The Greens at Broken Arrow III .....	918.355.0802
The Greens on Aspen .....	918.872.8899

**CLAREMORE**

Deer Run .....	918.343.7326
----------------	--------------

**OWASSO**

The Greens at Owasso I/II .....	918.274.4800
The Greens at Owasso III/IV .....	918.376.4244

**STILLWATER**

The Links at Stillwater .....	405.372.9910
The Greens at Stillwater .....	405.372.9910

**OKLAHOMA CITY**

The Greens at Lake Overholser .....	405.494.9888
The Greens at Oklahoma City .....	405.602.5208
The Links at Oklahoma City .....	405.936.9211
The Trails at Rockwell .....	405.604.3583

**NORMAN OKC**

The Links at Norman .....	405.321.3430
The Greens at Norman .....	405.321.3430

**EDMOND OKC**

The Greens at Coffee Creek .....	405.216.3642
----------------------------------	--------------

**MOORE OKC**

The Greens at Moore .....	405.794.0062
The Fairways at Moore .....	405.895.6127

**YUKON OKC**

The Links at Mustang Creek .....	405.577.5151
The Greens at Mustang Creek .....	405.577.5151



## Now accepting applications for:

**Operators/  
Assemblers**

**Operadores /  
Ensambladores**

*-Up to \$18.29/hour*

**Forklift  
Operators**

**Operadores de  
Montacargas**

*-Up to \$18.95/hour*

**Maintenance  
Technicians**

**Técnicos de  
Mantenimiento**

*-Up to \$29.79/hour*



# JOB FAIR

*Onsite Interviews!*

**Friday, July 8**

**1pm - 5pm**

**1100 W 15th St.**

**Fayetteville, AR  
72701**

Get an early start on the application process! Apply Today!

# conagrabrands.com

Conagra Brands is an Affirmative Action and Equal Opportunity Employer.