



# JOB GUIDE

 @thejobguide88

 @thejobguide88

 /company/the-job-guide

*First Call*®

Your Staffing Source®

**HAPPY  
New Year**

*Become part of the company that  
is putting the CARE back into  
HealthCARE!*



First Call, your Medical Staffing and Home Care Specialist, has needs for **RNs, LPNs, CNAs and CHHAs** for both **PART-TIME** and **FULL-TIME** assignments paying up to:

**RNs \$49.00 • CNAs \$26.00 • LPNs \$39.00 • CHHAs \$18.00**

• Flexibility • Top Wages • Vacation • Daily Pay • AFLAC • Weekly Pay • Direct Deposit

*First Call requires recent work experience and good references.*

**Come see us in person or Scan QR Code:**

4125 S. Sheridan Rd  
Tulsa, OK 74145  
918.665.1011

7925 N. May Ave  
Oklahoma City, OK 73120  
405.842.7775

3354 S. National Suite D  
Springfield, MO 65807  
417.886.1001



*First Call* knows I work hard.

*First Call* knows I care.

*First Call* knows...*I'm Amazing!*

**Apply online at: My-FirstCall.com**

Drug testing required. Some restrictions apply.

**ISSUE**

Vol. 34 Issue 25  
Dec. 16 - Jan. 06, 2023

**JOBS**

Northwest Arkansas  
SW Missouri • Tulsa OK

*Free*



**PRINT**

Distributed in NW Arkansas, SW Missouri and Tulsa Metro area.



**DIGITAL**

Find us at: [thejobguide.com](http://thejobguide.com)



[f @ thejobguide](https://www.facebook.com/thejobguide) [in /company/the-job-guide](https://www.linkedin.com/company/the-job-guide)

**Contact:**

PO Box 813 • Rogers, AR. 72757 • 800-654-9776

**Sales/Questions:**

[sunny@thejobguide.com](mailto:sunny@thejobguide.com)

[thejobguide.com](http://thejobguide.com)



**Sunny Martinez**  
CEO  
Job Guide, LLC



Job Guide, LLC is not responsible for ad contents, products or services offered. Job Guide, LLC reserves the right to reject advertising it deems unsuitable and liability does not exceed the cost of the advertisement placed. Any reproductions of the contents of this publication without the written consent of Job Guide, LLC is strictly prohibited.



[f @ thejobguide](https://www.facebook.com/thejobguide) [in /company/the-job-guide](https://www.linkedin.com/company/the-job-guide)



- Direct Care Supervisor
- Driver
- Mental Health Professional
- Program Training Staff
- Speech Therapist
- Supported Living Staff
- Supportive Living Staff

**\$700 Sign On Bonus**



**Come Join Our Team!**

Apply Online:

<https://www.pathfinderinc.org/employment-opportunities.php>

Or apply in person at:

1200 W Walnut, Suite 1100, Rogers, AR



**Circle of Life seeking experienced, compassionate candidates to join our TEAM!**

- Admissions RN (FT)
- After Hours RN (PT)
- CNA Inpatient (PRN & FT)
- CNA Outpatient (FT)
- LPN Inpatient Days
- LPN Inpatient Nights
- LPN Weekend (PT)
- Night Call Nurse (PRN)
- Outpatient LPN Full Time Weekdays
- RN Case Manager (FT Outpatient)
- RN Inpatient - Nights
- RN Liaison
- RN Outpatient (PT and PRN)
- Unit Administrative Assistant (FT)
- Volunteer Administrative Assistant (PT)
- Weekend Intake/Admissions RN

**Apply online at: [nwacircleoflife.org](http://nwacircleoflife.org)**

Contact Human Resources at: 479-872-3366 or 479-872-3397

**Earlene Howard Hospice Home**  
901 Jones Road | Springdale, AR 72762

**Marie & John Carr Hospice Home**  
1201 NE Legacy Parkway | Bentonville, AR 72712  
Drug Free Workplace Equal Opportunity Employer

*Do you have a love for helping others?*

## Become a Personal Care Assistant!

- Earn bonuses
- Have paid holidays
- **Work up to 40 hours** per week
- Have a flexible part-time work schedule
- Participate in voluntary benefits programs - Including participation in 403(b) retirement plans.
- This is a Safety-Sensitive job for purposes of the AR M.M.A.

Have no personal care assistant background? No problem! We can **TRAIN** you! We provide **FREE 40-hour Personal Care Training ONLINE!**



For more information or to apply:  
**aanwar.org/Employment**

Call (870) 741-1144 or 1-800-432-9721 to check out our:  
**Hire-On bonus and bi-weekly retention bonuses!**

EEO | Employer/AA/M/F/Vet/Disabled  
Employment subject to background check and drug screening.



## CAREGIVERS NEEDED

- Flexible Schedules & Locations
- Incentive time off
- Competitive wages
- Caregiver referral bonuses
- 401k/Health/Dental/Vision Insurance
- Unique Assignments
- Specialized training
- Direct Deposit
- Assignments cover all of NW AR
- **\$11/hr - \$15/hr** Depending on assignment
- **No Experience Required**
- **Paid Traing Provided!!**

**Apply in person:**  
**3190 Bella Vista Way | Bella Vista, AR 72714**  
**Call Us at: 479-855-6000**  
**rah-ar.com**



## Affordable Medical and Dental Training

For over 30 years we have been dedicated to providing affordable, quality education and hands-on training that prepares students for entry-level healthcare positions and national certification.



**ENROLL TODAY**

**PetraAlliedHealth.com | 479-750-9876**  
Licensed by Arkansas Division of Higher Education

## RETURN. LEARN. EARN.

Take **FREE** courses to earn a GED®, sharpen English skills, prepare for college or advance your career.

Adult Education programs include:

- ▶ High School Equivalency (GED)
- ▶ Career Education / WAGE
- ▶ English for Language Learners (ELL)
- ▶ TANF & SNAP E&T Services

NWACC Adult Education provides equal access to all programs and activities. You must be 18 years or older to participate. Classes paid for with funds from the Department of Career Education, Adult Education Division.

Scan QR code to learn more. ▶



askadulterd@nwacc.edu  
www.nwacc.edu/AdultEducation  
Shewmaker Center for Workforce Technologies  
1000 S.E. Eagle Way,  
Bentonville, AR 72712



**SCHAEFFLER**

FAG

Schaeffler, a stable employer and an integral part of the Four State Area, is currently hiring:

**Urgent Need: Electricians, multiple positions available for 2nd & 3rd shift.**

- **Electricians**
- **Machine Operators**  
- (2nd & 3rd Shift)  
Starting at \$18.60/hr + shift premium  
- Most work areas are climate controlled  
- Pay increase in 90 days!
- **Warehouse Workers (multiple positions)**
- **Tool Design Engineer**
- **Production Team Leader (multiple positions)**
- **Internships - Supply Chain and Engineering**

**Great Benefits:**

- 10 paid holidays per year
- 401(k) with up to 6% match and immediate vesting
- Medical, Dental, Vision
- Tuition reimbursement
- Paid Vacation

**Ways to Apply:**

- Scanning the **QR code** to apply online or go to: <https://jobs.schaeffler.com>
- **3900 South Range Line Road, Joplin , MO 64804**
- Email request for information or questions to: [hrjoplin@schaeffler.com](mailto:hrjoplin@schaeffler.com)

Schaeffler is an Equal Opportunity Employer/Minorities/Females/Disabled/Veterans



**SPRINGDALE, AR SCHOOL DISTRICT**

**NOW HIRING BUS DRIVERS**



**\$19.46 - \$27.25 Per Hour PLUS**  
\$3900 - \$4800 Incentive Pay  
5 hours Each Day & 180 Work Days  
Arkansas Teacher Retirement

**Health Insurance**  
Paid CDL Training  
Flexible Schedules  
No Experience Required

**CALL US TODAY!**  
**479-750-8830**



**Now Hiring!**

**Finance Director**

Acts as the Chief Financial Officer of the City. Leads the financial management of all City departments and is a direct report to the Mayor. Serves as lead person on projects which require a "Team Approach" and inter-department coordination. Responds to City Council legislated action by ensuring that necessary administrative functions of the City are carried out in a professional and timely manner.

Manages key staff who supervise a total of 20 -25 employees in respective departments of Accounting, Purchasing, and Utility Billing.

Fifth year college or university program certificate in business, accounting, or a related field and seven (7) to Ten (10) years related experience and/or training; or equivalent combination of education and experience.

**CERTIFICATES, LICENSES, REGISTRATIONS**

- Certified Public Finance Officer (CPFO) Certification preferred
- Certified Public Accountant (CPA) is preferred.
- 10 Years of governmental finance experience is preferred.

Full Job description and application available online at [bentonville.com](http://bentonville.com) under the jobs tab or direct link: <https://bit.ly/3TOXJqf>

Contact Bentonville Human Resources email with questions at: [hr@bentonville.com](mailto:hr@bentonville.com)

The City of Bentonville is an Equal Opportunity Employer. The City of Bentonville does not discriminate on the basis of race, color, religion, sex, national origin, marital or veteran status, political status, disability status or other legally protected status.



# Ready to Launch

## Now accepting applications for:

**Operators/  
Assemblers**

**Operadores /  
Ensambladores**



**-Up to \$19.27/hour**

**Forklift  
Operators**

**Operadores de  
Montacargas**



**-Up to \$20.06/hour**

**Maintenance  
Technicians**

**Técnicos de  
Mantenimiento**



**-Up to \$31.34/hour**

*Onsite Interviews!*

# Job Fair

**Friday, Jan. 20, 2023**

**1 pm - 5 pm**

**1100 W. 15th St.**

**Fayetteville, AR**



**Get an early start on the application process! Apply Today!**

# conagrabrands.com



Find a job for the  
**NEW YEAR!**

**NOW HIRING**

- Accounts Payable
- Accounts Receivable
- Administrative Assistant
- Animal Caretaker - 1st shift
- Assemblers/Material Handlers - 1st and 2nd shift
- Class A and B CDL Drivers - 1st shift
- Custodian 1st and 2nd shift
- Electronics Assembly
- Farm Techs/Gentry - 1st shift
- Forklift - 1st and 2nd shift
- Machine Operators - All shifts
- Office Manager
- P/T Front Desk Worker
- Parks Maintenance - 1st shift, includes some nights/weekends
- Poultry Workers in Huntsville and Pineville - All shifts
- Production Line Workers
- Soldering - 1st shift
- Warehouse Workers - 1st and 2nd shift

- **Affordable Benefits Options Available from DAY ONE!**
- **Must be at least 18 years of age.**
- **Second Chance Employer**

Starting Pay Ranges from **\$14-\$25 per hour!**  
(Depending on Experience)

**Referral Bonus Available!**  
Earn \$50 for each referral who completes 40 hours of work!  
[www.penmac.com/ReferAFriend](http://www.penmac.com/ReferAFriend)

**¡Se habla español!**

1127 S. Gutensohn Rd., Ste. #110, Springdale, AR  
479-408-4448 | Apply online: Penmac.jobs



Now Offering  
**Part-Time Schedules!**  
(3 days a week)

**JOIN  
OUR  
TEAM**

- Competitive Wages with pay rates ranging from: **\$16.10/hr - 19.25/hr**
- We're now offering a \$1.50 shift differential for 2nd shift positions.
- Overtime available
- Paid vacation and holidays
- Full Benefit package including medical, dental, vision and 401K
- **Weekly Bonus Programs:**  
**Weekly Attendance Bonus: \$1.00/hr extra for weekly perfect attendance!**

Apply online:  
[cargill.com/springdale](http://cargill.com/springdale)

Cargill is an Equal Opportunity Employer, including Disability/Vet. Drug Free Employer



**ARCO  
EXCAVATION  
And PAVING Inc**  
**NOW HIRING!**

WE HAVE THE CURRENT OPPORTUNITIES AVAILABLE:

- LABORERS
- HEAVY EQUIPMENT OPERATORS
- CONCRETE FINISHERS
- CURB MACHINE OPERATOR

We provide a full range of benefits including medical, dental, vision, HSA, Company Paid STD, 401k with match, vacation, paid holidays & more!

Apply Online:

[www.arcoexc.com/careers](http://www.arcoexc.com/careers)

**LOCAL STRENGTH. LOCAL GROWTH.  
LOCAL COMMITMENT.**

Arco Excavation & Paving is an Equal Opportunity Employer. Drug Free Workplace.

**BUILD  
YOUR  
FUTURE  
WITH US**



Now taking applications for:  
**1st & 2nd Shift**

**Maintenance Tech**

- **INCREASED** Competitive Wages with pay rates ranging from: **\$19.65/hr - \$31.85/hr**
- We're now offering a **\$1.50 shift differential for 2nd shift positions**
- Weekly Bonus Programs
- Overtime available
- Paid vacation and holidays
- Full Benefit package including medical, dental, vision and 401K

**Weekly bonuses!**  
**\$1.00/hr extra for weekly perfect attendance**

Apply online:  
[cargill.com/springdale](http://cargill.com/springdale)

Cargill is an Equal Opportunity Employer, including Disability/Vet. Drug Free Employer

# JOIN OUR TEAM

## MID-SOUTH STEAM BOILER TEAM!

### IMMEDIATE OPENINGS FOR:

#### Experienced Welders

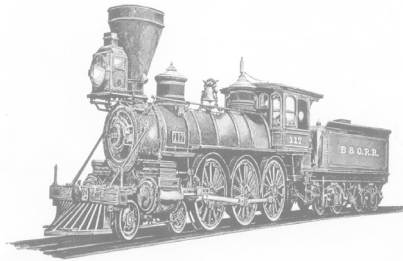
- Stick
- Mig
- Tig
- Pipe
- Structural
- Flux Core
- Must be able to pass a welding test
- Must be at least 18 years old

#### General Helpers/ Insulator Helpers

- Travel
- Stable Work History
- Must be at least 21

Like to problem solve? Like a challenge? Like to travel? Looking for a career change?

**No Experience Required!**  
**Train to become a Boiler Technician Apprentice!**



#### HVAC / Electrical / Mechanical Maintenance Technicians

If you are experienced in HVAC or interested in Boilers and understand the importance of customer service, professional attitude & want to work for a growing company, apply now!

- HVAC
- Electrical & Mechanical Background
- Troubleshooting electrical systems
- Understand electrical schematics
- Must be at least 21

#### Employment Requirements:

- Clean driving record, that means no moving violations, DUI's
- Pay based on position/experience
- Stable Work History
- Criminal background checks and drug screens performed on all potential employees

#### Benefits

- Medical/Dental - Blue Cross/Blue Shield of AR
- Kansas City Life | New York Life
- Section 125 Cafeteria Plan
- 401(k)
- AFLAC
- VSP
- Direct Deposit
- Safety Shoes- Eligible after 1 year of continuous employment

### Ways to become part of the Mid-South Steam Boiler Team:

Apply in Person:  
Mon-Fri: 9 am - 3 pm  
3805 Pointer Trail East  
Van Buren, AR 72956

Call: 479-471-1468

Fax: (479)262-6446

Email resume with references to:  
[jobs@midsouthboiler.com](mailto:jobs@midsouthboiler.com)

# INGLES PARA ESTUDIANTES DE IDIOMAS

Toma clases de ELL para mejorar tu inglés.

- ▶ Clases GRATIS
- ▶ Por la Mañana y Por la Tarde

**¡INSCRIBASE HOY!**

- ▶ Teléfono: 479- 986-6911
- ▶ Shewmaker Center for Workforce Technologies  
1000 S.E. Eagle Way, Bentonville, AR



NWCC Adult Education Center provee igual acceso a todos los programas y actividades. Debe ser mayor de 18 años de edad para participar. Pagado con fondos de la División de Educación para Adultos, del Departamento de Carreras o Profesiones en Educación.

Escanea el código QR para aprender más ▶



ADULT EDUCATION

## NOW HIRING

### Join our Production Team

Day & Night Shift Positions Available  
**Pay Rates starting at: \$15.90 up to \$16.40!**  
 \$1.50 Pay Increase after 90 days!  
 \$1.00 Shift Premium!

**\$\$ BONUS PROGRAMS \$\$**  
**RETENTION BONUS EARNING POTENTIAL: UP TO \$2000**



Apply online TODAY at:  
[careers.butterball.com](https://careers.butterball.com)

Don't have a computer at home? Apply onsite using our computers  
 Mon. - Fri., 9 a.m. - 4 p.m.

**Butterball, LLC | 1294 N. College Street, Huntsville, AR | 479-738-2151**  
 This position is deemed Safety Sensitive for purposes of Butterball's Drug/Alcohol Screening & Testing Policy. Details will be provided to individuals who receive a conditional job offer, or upon request. EOE including Disability/Vets.



OZARK REGIONAL TRANSIT AUTHORITY



*Women & Minorities encouraged to apply*

## Mechanic Needed

Experience in a heavy-duty or transit mechanical shop preferred. ASE certifications preferred. CDL or ability to obtain CDL. Hourly wage depending on experience.

**Excellent Benefits:**

Health, Vision, Dental, Paid Vacations, Uniforms provided  
 457 (b) retirement with employer match



2423 E Robinson  
 Springdale, AR  
 Apply online: [ozark.org](https://ozark.org)  
 479-361-8741

Email: [gdelancey@ozark.org](mailto:gdelancey@ozark.org)

Pre-employment physical, drug test and background check. An Equal Employment Opportunity Employer

## WE ARE HIRING

Join our team in Bentonville, AR!

Operations and Warehouse  
 Positions Available

**Embroidery & Patch Machine Operators** starting at \$15 per hr plus differential pay depending on the shift.

Excellent benefits after 60 days of employment. Medical, Dental, Vision, 401K etc., and 4 day work week in Production.

For full job descriptions and to apply, please visit:  
[www.outdoorcap.com/careers](https://www.outdoorcap.com/careers)  
 or scan QR code.

Outdoor Cap is an equal opportunity employer.







OZARK REGIONAL TRANSIT AUTHORITY

# We're Hiring Full & Part Time Driver Positions for our GROWING Routes!



**Routes available  
throughout NWA!**

**Excellent Benefits:**  
Health, Vision, Dental,  
Paid Holidays, Paid  
Vacations, Retirement  
with employer match



*Women & Minorities are encouraged to apply*

**In Person at ORTA Corporate Office:  
2423 E Robinson | Springdale, AR 72764**

**For more information call: 479-361-8741 or 479-361-8752**

**Or email: [gdelancey@ozark.org](mailto:gdelancey@ozark.org)**

**Apply today: [ozark.org](http://ozark.org)**

Pre-employment physical, drug test and background check. | An Equal Employment Opportunity Employer



# Affordable Medical and Dental Training

For over 30 years we have been dedicated to providing affordable, quality education and hands-on training that prepares students for entry-level healthcare positions and national certification.



**ENROLL TODAY**

**PetraAlliedHealth.com | 479-750-9876**  
Licensed by Arkansas Division of Higher Education



WestRock is a leading global packaging company and provider of paper and packaging solutions in global consumer and corrugated markets.

We are currently taking applications for:

## Machine Operators

**Starting Pay: \$17.54 | Position Pay: \$18.37 - \$22.45**

Manufacturing experience preferred but not required, High School Diploma or GED required. Must be available to work any shift assigned (3 shift operation).  
NO MANDATORY WEEKEND OT.

## Maintenance Electrical Tech I/II

**Pay Range: \$29.50 - \$34.69**

High School Diploma, GED, further education in Maintenance technology. Testing required to qualify.  
This is a Multi-Craft position experience required.

*Competitive Benefits including, Medical/Dental/Vision/401K/ Employee Stock purchase plan and other offerings.*

**For more information and to apply go to:**

**westrock.com**

WestRock Company is an Equal Opportunity Employer committed to creating and maintaining a diverse workforce: Minorities/Females/Disabled/Veterans



**MARTINEZ AGENCY**

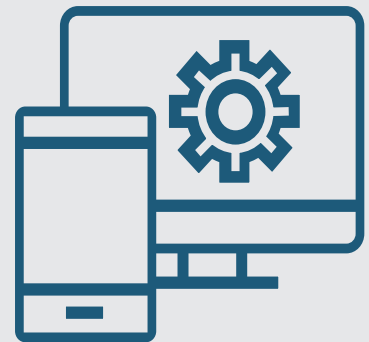
## CREATIVE



## BRANDING



## WEB DEVELOPMENT



**Martinez Agency** can help you with your next project!

Contact us at: [alex@martinez-agency.com](mailto:alex@martinez-agency.com) or call: 866-641-7692

[www.martinez-agency.com](http://www.martinez-agency.com)



The University of Arkansas,  
Fayetteville offers  
employment opportunities in  
the fields of:  
Maintenance ▪ Custodial ▪  
Computer Technical ▪ Clerical

**Current Opportunities Include:**

- Administrative Specialist III
- Administrative Support Supervisor
- Bus Operator - Full-Time (Current and Anticipated Future Openings)
- Financial Aid Analyst (Three Open Positions)
- Recycling Maintenance Worker (Three Open Positions)
- Service Assistant (Current and Anticipated Future Openings)
- Union Custodian

The University of Arkansas provides one of the most comprehensive and competitive benefit packages in the region.

- |                     |                          |                                |
|---------------------|--------------------------|--------------------------------|
| • Health Coverage   | • Paid Holidays          | • Vision                       |
| • Dental Coverage   | • Sick Leave             | • Short & Long Term Disability |
| • Prescription Drug | • Vacation Leave         | • Employee Assistance          |
| • Retirement        | • Catastrophic Leave     | • Program and More!            |
| • Basic Life        | • Family & Medical Leave |                                |
| • Optional Life     |                          |                                |
| • Tuition Reduction |                          |                                |



UNIVERSITY OF  
ARKANSAS

The University of Arkansas has an in-house temporary employment staffing service called RazorTemps. Apply to this posting if you are interested in being considered for temporary employment opportunities. These positions vary in length and often provide a 'foot in the door' to permanent employment at the University.

The University of Arkansas recognized the challenge of balancing work with personal life, and we pro actively look for ways to help our employees do well at both aspects of their lives. This includes creating health insurance and retirement plans that work well; offering work-time options where possible; promoting career and personal development; and giving paid leave for holidays, illness, vacations, children's educational activities and military duty, among others.

As we strive to represent the best of public higher education, advance Arkansas and build a better world by providing transformational opportunities and skills, promoting an inclusive and diverse culture, nurturing creativity, and solving problems through research and discovery, the University of Arkansas provides excellent opportunities for professional service and that you can be a part of the worthwhile advancement of the University. We believe in fostering a collaborative and innovative culture among our diverse faculty staff and students that promotes a healthy balance.

To apply for above positions, please visit our website at:

<https://uasys.wd5.myworkdayjobs.com/UASYS>

For more information, please contact us at 479.575.5351.

The University of Arkansas is an Equal Opportunity-Affirmative Action Institution.



**MoistureShield**  
COMPOSITE DECKING

**Now Hiring! | New Positions!**  
**Estamos contratando!**  
**Nuevas Posiciones!**

- Maintenance Techs/Tecnico de Mantenimiento
- Electrician/Electricista
- CDL Driver/Conductor CDL
- Sr. Operator in Lowell, AR Plant (Lead)/ Operador Sr. en Lowell (líder)

**We Offer/Ofrecemos:**

- 3 1/2 Day Work Week/Semana de 3 dias y medio
- Competitive Wages & Benefits/Pago y Beneficios Competitivos
- Bonus Earning Potential/Potencial de Bonos
- Day and Night Openings/Posiciones de Dia y Noche
- Advancement Opportunities/Oportunidades de Crecimiento



**Apply online/Aplique en línea en:**

**<https://jobs.crh.com>**

Search/ Busque: "MoistureShield"

**Apply onsite/Aplique en Persona:**

**Mon/Lunes – Fri/Viernes: 9 am – 4 pm**

**801 N. Jefferson St.**  
**Springdale, AR 72764**  
**479-750-1299**

Equal Opportunity Employer and Drug Free Workplace

GET YOU ONE OF THEM FANCY LAWYERS



the  
MOST INTERESTING  
LAWYERS  
in Northwest Arkansas

MOSTYN  
PRETTYMAN  
PLLC  
arklawyers.com

**Cargill**

Now taking applications for:  
**1<sup>st</sup> & 2<sup>nd</sup> Shift**

**Maintenance Tech**

- **INCREASED** Competitive Wages with pay rates ranging from: **\$19.65/hr - \$31.85/hr**
- We're now offering a **\$1.50 shift differential for 2nd shift positions**
- Weekly Bonus Programs
- Overtime available
- Paid vacation and holidays
- Full Benefit package including medical, dental, vision and 401K

**Weekly bonuses!**  
**\$1.00/hr extra for weekly perfect attendance**

**Apply online:**  
**cargill.com/springdale**

Cargill is an Equal Opportunity Employer, including Disability/Vet. Drug Free Employer

**SCHAEFFLER**

FAG

Schaeffler, a stable employer and an integral part of the Four State Area, is currently hiring:

**Urgent Need: Electricians, multiple positions available for 2nd & 3rd shift.**

- Electricians
- Machine Operators - (2nd & 3rd Shift)  
Starting at \$18.60/hr + shift premium  
- Most work areas are climate controlled  
- Pay increase in 90 days!
- Warehouse Workers (multiple positions)
- Tool Design Engineer
- Production Team Leader (multiple positions)
- Internships - Supply Chain and Engineering

**Great Benefits:**

- 10 paid holidays per year
- Medical, Dental, Vision
- 401(k) with up to 6% match and immediate vesting
- Tuition reimbursement
- Paid Vacation

**Ways to Apply:**

- Scanning the **QR code** to apply online or go to: **https://jobs.schaeffler.com**
- **3900 South Range Line Road, Joplin, MO 64804**
- Email request for information or questions to: **hrjoplin@schaeffler.com**

Schaeffler is an Equal Opportunity Employer/Minorities/Females/Disabled/Veterans

CRH is the leading local distributor for products such as rock and asphalt as well as a road construction company. **Many of our positions are designed to train you on the job with little to no experience required.**

**APAC, Standard Materials and Arkhola are part of the CRH family.**



### SMG Oklahoma Openings for Tulsa, OK

Contact Lisa Chapman at: (918) 556-2236 for details.

*Potential Sign On Bonus of up to \$1,000!*

- Class A Dump Driver
- Ready Mix Truck Drivers



A CRH COMPANY

### Apac Oklahoma Openings for Tulsa, OK

Contact Lisa Chapman at: (918) 556-2236 for details.

*Potential Sign On Bonus of up to \$1,000!*

- Asphalt Plant Mechanic (Not Eligible for Sign-On Bonus)
- Construction Laborer
- Construction Heavy Equipment Operator
- Concrete Finisher
- Quarry Worker
- Quality Control Supervisor/Engineer
- Quality Control Manager
- PT Weekend Days Security Guard
- FT Weekend Nights Security Guard



A CRH COMPANY

### Apac/SMG AR Openings for NW AR

Contact: (479) 684-5005 or (479) 263-2177 for details. | Se Habla Español

*Potential Sign On Bonus of up to \$1,500!*



- Concrete Foreman
- Finishers
- Quarry Worker (Harrison AR)
- Ready Mix Class B CDL Drivers
- Heavy Construction Equipment Operators
- CDL Trainees
- Safety Representative
- Operations Support Rep.- Bilingual Preferred
- Electrician
- Accounting Roles:
  - Payroll
  - Receivables
  - Payables
- Paving Laborers



### Arkhola Openings for Fort Smith, AR

Contact Marsha Hayes at: (479) 788-6365 for details.

*Potential Sign On Bonus of up to \$1,500!*

- Heavy Equipment Operator
- Quarry Workers
- Ready Mix Truck Drivers
- Scale House Clerk



A CRH COMPANY

### Apac Openings for Muskogee, OK

Contact Marsha Hayes at: (479) 788-6365 for details.

*Potential Sign On Bonus of up to \$1,500!*

- Class A Heavy Haul Truck Drivers
- Construction Laborer
- Shop Mechanic
- Construction Heavy Equipment Operator
- Dirt Crew Foreperson
- Ready Mix Truck Drivers

**Competitive Wages, Benefits and Excellent Safety Culture!**

You may apply online for any of the above positions and see more listings at:

<https://www.crhamericas.com>

APAC Central Inc. is an Affirmative Action and Equal Opportunity Employer



**MARTINEZ**  
SPORTS CARDS

**BASKETBALL CARDS**  
**BASEBALL CARDS**  
**FOOTBALL CARDS**

[www.martinezsportscards.com](http://www.martinezsportscards.com)



Northwest Arkansas  
**NOARK**  
Human Resources  
Association, Inc.

[info@noark.org](mailto:info@noark.org) | 479-305-2466

Affiliate of the Society of Human Resource Management (SHRM)  
Membership benefits include:  
Monthly program meeting featuring top local and national speakers  
Learning labs  
Seminars  
Networking events  
And More!

Join us @  
[www.noark.org](http://www.noark.org)



*Do you have a love for helping others?*

**Become a Personal Care Assistant!**

- Earn bonuses
- Have paid holidays
- **Work up to 40 hours** per week
- Have a flexible part-time work schedule
- Participate in voluntary benefits programs - Including participation in 403(b) retirement plans.
- This is a Safety-Sensitive job for purposes of the AR M.M.A.

**Have no personal care assistant background? No problem! We can TRAIN you! We provide FREE 40-hour Personal Care Training ONLINE!**



For more information or to apply:  
[aanwar.org/Employment](http://aanwar.org/Employment)

Call (870) 741-1144 or 1-800-432-9721 to check out our:  
**Hire-On bonus and bi-weekly retention bonuses!**

EEO | Employer/AA/M/F/Vet/Disabled  
Employment subject to background check and drug screening.



Don't miss upcoming networking events from the Rogers Lowell Chamber

**COFFEE connection** RLC **TUESDAY, JAN. 10**  
at Xtreme Exteriors  
715 W. Walnut St. | Rogers, AR

**THURSDAY, JAN. 12**  
at Cherokee Casino & Hotel  
2416 HWY 412 | West Siloam Springs

*Joint* **BUSINESS**  
*After Hours* RLC

Visit [www.RogersLowell.com](http://www.RogersLowell.com) for more information

Lindsey Management Co., Inc. provides management services to the multifamily apartment properties listed. Thinking about a new career; property management may be a good field to consider.



We are currently hiring assistant managers, leasing consultants & maintenance techs at various properties. These positions are key to the successful management of apartment properties and are positions that can lead to management. Please visit our website. EOE

**www.LindseyMgmt.com**

*Call the number below or visit [Indeed.com](http://Indeed.com) to view current job listings!*



**ARKANSAS - NORTHWEST ARKANSAS**

**FAYETTEVILLE**

Appleby.....	479.443.9258
Chestnut II.....	479.521.6895
The Cliffs I.....	479.582.2540
The Cliffs II.....	479.444.0400
Cornerstone I/II.....	479.443.3507
Crafton Place/Starrfire.....	479.521.6895
Crossover Terrace.....	479.443.9744
East Oaks/Oakshire I/II.....	479.443.7278
Fair Park.....	479.587.9395
The Greens at Lakeside Village.....	479.442.7663
Lakeside Village.....	479.443.9022
The Links at Fayetteville.....	479.966.4340
The Greens at Fayetteville.....	479.966.4340
The Fairways at Fayetteville.....	479.966.4340
Markham Hill.....	479.443.9333
Paradise View.....	479.521.8299
The Park I/II.....	479.443.9804
Shiloh.....	479.442.4384
Southern View I/II.....	479.443.6698
Stearns Street/Vantage Center.....	479.527.9851
Valley Lake.....	479.444.9744

**SPRINGDALE**

Bridgestone.....	479.751.8866
Eastwood.....	479.927.0676
Johnson Meadows.....	479.756.1312
The Trails at the Crossings.....	479.717.6868
The Links at Springdale I/II.....	479.750.1515
Station.....	479.756.1312
Sunset I/II/Holcomb.....	479.750.3030
Walnut Tree.....	479.751.8866
West End Place/Pleasant Point.....	479.750.3030

**LOWELL**

The Links at Lowell.....	479.770.2100
--------------------------	--------------

**ROGERS**

Brentwood I/II.....	479.631.5800
Briarwood.....	479.631.5800
Doubletree I/II.....	479.631.5800
Edgewood.....	479.631.5800
The Fairways at Lost Springs.....	479.621.0277
The Greens at Lost Springs.....	479.631.6515
The Greens on Blossom Way.....	479.631.2024
Lost Springs.....	479.621.9399
Turtle Creek I/II/Park.....	479.631.1444

**BENTONVILLE**

Copperstone I/II.....	479.271.9300
Delmar.....	479.273.5283
The Links at Bentonville.....	479.271.0205
The Links at Rainbow Curve.....	479.657.6446
The Trails at Bentonville.....	479.657.6633
Moberly Manor I/II.....	479.273.2540
Moberly Place.....	479.273.3533
Walton Crossing.....	479.268.4237

**SILOAM SPRINGS**

Spring Valley I/II.....	479.549.3213
-------------------------	--------------

**ARKANSAS—REST OF STATE**

**BENTON**

Dogwood Lakes.....	501.794.3000
Fountain Lakes.....	501.778.3134
The Greens at Longhills.....	501.860.6968

**BRYANT**

The Fairways at Hurricane Creek.....	501.847.7747
The Greens at Hurricane Creek.....	501.847.2586
The Lakes at Hurricane Creek.....	501.847.6178

**CONWAY**

Centennial Valley I/II.....	501.513.2555
The Fairways at Nutters Chapel.....	501.205.8230
Fox Run.....	501.327.8739
Germantown.....	501.329.0767
The Greens at Nutters Chapel.....	501.450.7056
Lake Pointe.....	501.336.0900
The Links at Cadron Valley.....	501.513.0000
Salem Park.....	501.329.5900
Westlake.....	501.513.9392

**FORT SMITH**

The Links at Fort Smith.....	479.648.8080
Pike Place.....	479.782.6686

**HARRISON**

The Links at Harrison.....	870.365.3620
----------------------------	--------------

**JONESBORO**

Gladiola Estates/Gladiola Manor.....	870.933.8333
The Greens at Jonesboro.....	870.275.6525
The Links at Jonesboro.....	870.275.6525
Park Lake.....	870.933.8333

**LITTLE ROCK**

The Links at Eagle Hill.....	501.407.9088
Eagle Hill.....	501.455.8818
Eagle Nest.....	501.407.0567
Westwood I/II.....	501.455.8862

**NORTH LITTLE ROCK**

The Greens at the Rock.....	501.753.1200
The Links at the Rock.....	501.812.5020

**MARION**

The Fairways at Marion I/II/III.....	870.739.4949
The Greens at Marion I/II.....	870.739.6300

**PARAGOULD**

Silverwood.....	870.239.3815
-----------------	--------------

**RUSSELLVILLE**

Shadow Lake.....	479.967.5584
Spring Lake I/II.....	479.858.7079

**SEARCY**

Meadow Lake I/II.....	501.268.3355
-----------------------	--------------

**SHERWOOD**

The Links at Sherwood.....	501.833.8010
----------------------------	--------------

**TEXARKANA**

The Links at Texarkana.....	870.773.2295
-----------------------------	--------------

**ALABAMA**

**TUSCALOOSA**

The Greens at Tuscaloosa I/II.....	205.342.3339
The Links at Tuscaloosa.....	205.247.9978

**AUBURN**

The Greens at Auburn.....	334.821.4061
The Fairways at Auburn I/II.....	334.209.1850

**KANSAS**

**DERBY**

The Greens at Derby I/II.....	316.788.3060
The Fairways at Derby.....	316.788.1028
The Links at Kansas I/II.....	785.841.3868
The Links at Manhattan.....	785.539-8448

**SHAWNEE**

The Greens at Shawnee.....	913.422.8295
----------------------------	--------------

**MISSISSIPPI**

**OXFORD**

The Links at Oxford.....	662.513.4949
--------------------------	--------------

**CANTON**

The Greens of Madison County.....	601.391.3464
The Links of Madison County.....	601.859.5551
The Trails at Madison County.....	601.436.4707

**STARKVILLE**

The Links at Starkville.....	662.338.1801
------------------------------	--------------

**MISSOURI**

**JOPLIN**

Tanglewood.....	417.623.3336
-----------------	--------------

**SPRINGFIELD**

The Greens at Springfield.....	417.833.3261
--------------------------------	--------------

**GRANDVIEW**

Grand Summit Apartments.....	816.331.3968
The Fairways at Grand Summit I/II.....	816.425.4059

**COLUMBIA**

The Links at Columbia.....	573.474.4399
----------------------------	--------------

**OKLAHOMA**

**BIXBY** Tulsa suburb

The Links on Memorial I/II.....	918.369.6055
---------------------------------	--------------

**BROKEN ARROW** Tulsa suburb

The Greens at Broken Arrow I/II.....	918.355.0802
The Greens at Broken Arrow III.....	918.355.0802
The Greens on Aspen.....	918.872.8899

**CLAREMORE**

Deer Run.....	918.343.7326
---------------	--------------

**OWASSO**

The Greens at Owasso I/II.....	918.274.4800
The Greens at Owasso III/IV.....	918.376.4244

**STILLWATER**

The Links at Stillwater.....	405.372.9910
The Greens at Stillwater.....	405.372.9910

**OKLAHOMA CITY**

The Greens at Lake Overholser.....	405.494.9888
The Greens at Oklahoma City.....	405.602.5208
The Links at Oklahoma City.....	405.936.9211
The Trails at Rockwell.....	405.604.3583

**NORMAN OKC**

The Links at Norman.....	405.321.3430
The Greens at Norman.....	405-321-3430

**EDMOND OKC**

The Greens at Coffee Creek.....	405.216.3642
---------------------------------	--------------

**MOORE OKC**

The Greens at Moore.....	405.794.0062
The Fairways at Moore.....	405.895.6127

**YUKON OKC**

The Links at Mustang Creek.....	405.577.5151
The Greens at Mustang Creek.....	405.577.5151



[workatsimmons.com](http://workatsimmons.com)

# We're Hiring!



✓ **\$16.50** /hr  
Multiple shifts + Including Saturdays only

✓ **Hiring Bonus**  
**+\$0.50** /hr  
**for Night Shift**  
(all locations)



## Build Your Paycheck

- ✓ Vacation Matching
- ✓ Referral Bonuses
- ✓ First 6 Months = Vacation Pay



## Simmons Care Clinics

- ✓ High-Quality Healthcare
- ✓ Team Members & Families
- ✓ Free Generic Prescriptions



## Education Financial Aid

- ✓ Tuition Reimbursement
- ✓ Leadership Development
- ✓ On-The-Job Training

**Prepared Foods**

**Prepared Foods**

**Animal Nutrition**

**Pet Food**

*Gentry, AR  
Southwest City, MO  
Van Buren, AR*

*Van Buren Cook*

*Siloam Springs, AR  
Southwest City, MO*

*Siloam Springs, AR*

**Day & Night Shift**

**New Shift**

**Day & Night Shift**

**Day Shift**

- Production
- Maintenance

- Expansion  
Coming Soon

- Utility Production
- Maintenance
- Operators

- Utility
- Maintenance
- Refrigeration

### NWA Hiring Center

2998 Hwy 412 East, Ste 80  
Siloam Springs, AR 72761  
**(844) 400-9357 Option 3**

### SWC Hiring Center

10700 S. State Hwy 43  
Southwest City, MO 64863  
**(417) 762-3271 Option 3**

### Fort Smith Hiring Center

4900 Rogers Ave., Suite 103 D  
Fort Smith, AR 72903  
**(479) 262-5390 Option 3**

See enhanced safety measures here: [simmonsfoods.com/covid19-measures](http://simmonsfoods.com/covid19-measures)

EEO